

**No Problem
No Call Out Charge**

Gutters Cleared
We remove leaves - moss - grass - growth & debris

Photos
Before & After
We do a camera survey first

Conservatories & up to 4 Storeys
Tall buildings, schools, nursing homes
and industrial units.

£5million insurance & a Receipt
Peace of mind that we're a proper business.

Timed Appointment
You can track our arrival online

Get an instant price
01491 815 450
or book online gutterpro.co.uk



C. A. HOLTOM Building Contractor

Established 1988

FOR ALL TYPES OF

Building – Extensions – Plastering – Refurbishment
Alterations – Brickwork – Patios – Drainage

Tel: 01491 651141 / 07990912966

Email: choltom1@sky.com



Illumin-Nation Ltd
5 St Peters Place, St Peters Street
Wallingford, Oxon OX10 0BG

allan.priddle@btconnect.com
www.illumin-nationltd.co.uk 01491 833505



Fireplace Magic
Stoves & Fireplace Sales

- Solid fuel, gas or electric fires
- Installation
- Chimney sweeping
- Woodburner servicing
- Chimney lining
- HETAS registered

Visit our showroom at
45 Prospect Street
Caversham RG4 8JB
Tel: 0118 9463060

www.fireplacemagic.co.uk



Masterfloors
Contract and Domestic Flooring Specialists

20 St. Martin's Street
Wallingford
Oxon. OX10 0AL
Tel: 01491 833701
Free estimates

www.masterfloorswallingford.co.uk

nicf
National Institute of Carpet & Nonwovens



HOMEBASE
PROPERTY

★ **WHATEVER YOUR PROPERTY NEEDS** ★

SALES

LETTINGS & MANAGEMENT

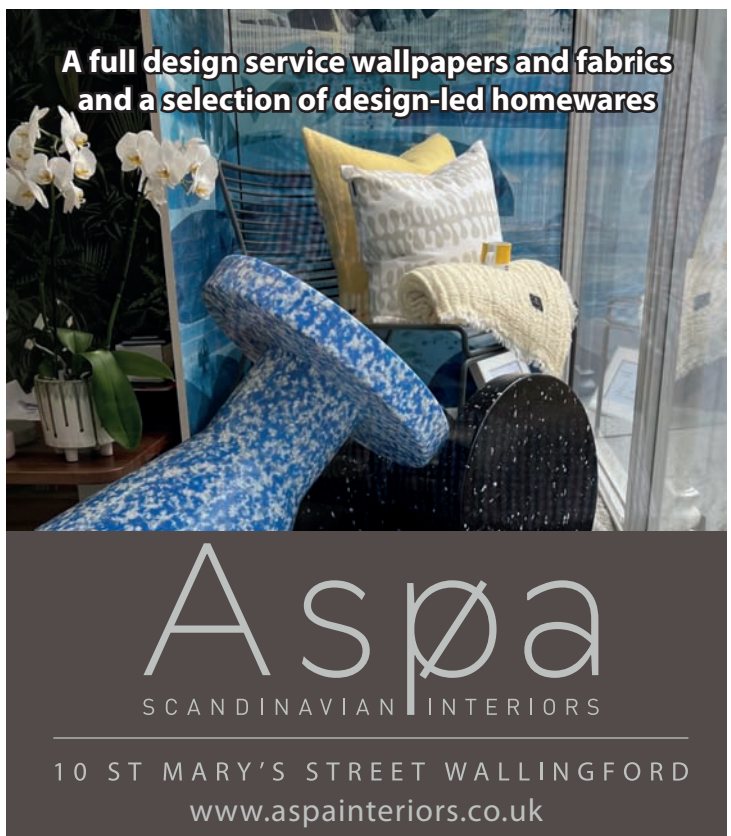
01491 824470 | info@hb-pm.co.uk
16B St Mary's St, Wallingford, OX10 0EW



Bathroom Showroom

Call Now
01491 377 272
35 Wallingford Rd, Goring
Wallingfordtilesandbathrooms.co.uk

Wallingford
— TILES & BATHROOMS



A full design service wallpapers and fabrics
and a selection of design-led homewares

Aspoa
SCANDINAVIAN INTERIORS

10 ST MARY'S STREET WALLINGFORD
www.aspainteriors.co.uk

To advertise in Window on Wallingford please contact us on: info@windowonwallingford.co.uk

Adverts:

Must be sent in 'print-ready' PDF format.

Advert sizes:

95 mm x 53 mm
95 mm x 110 mm
192 mm x 50 mm
210 mm x 297 mm
210 mm x 148 mm

Articles:

Supplied in MS word. Please provide any photos or images including logos separately (jpeg files) that you would like in your article.

Deadline date to submit: 8th October

Editor: Naomi Reddyhoff

info@windowonwallingford.co.uk

Marketing, Accounts & Administration: Jessica Dovey

jess@windowonwallingford.co.uk


Distribution: Naomi Reddyhoff

info@windowonwallingford.co.uk

Advertising Sales: Lesley Longden

lesley@windowonwallingford.co.uk

 @windowonwallingford

 @window_on_wallingford

Whilst every effort is made to ensure the accuracy of information printed in the magazine, the Editor and Publisher do not accept any responsibility for the consequences of any errors that may occur. Material published in the Window on Wallingford Magazine is copyright, but normally the Editor will be pleased to grant permission for it to be reproduced, if asked on each occasion. The opinions published in this magazine are not necessarily those of the Editor, Publisher or WoW.

Adverts will continue to run unless cancelled.

Hello Everyone

Such a sad but memorable September with a start to a whole new era.

I think most of us are feeling the pinch right now, everything seems to be going up in price. Here at WoW Magazine, we are the same. Paper, ink, printing prices have gone up 3 times over the past few months with the last increase in the middle of September.

This is having a massive effect on our wonderful magazine. As you know the revenue from our lovely advertisers enables us to print the magazine each month. Not forgetting our fabulous volunteers who help get the adverts, set the magazine, and deliver it. Thank you.

For us to continue producing the magazine we need to save some money from somewhere. Having looked at everything the best way is to change the format a little. Having fewer pages will save a tiny bit. All the regular local clubs and organisations will be in there but with a little less space given to everyone. You will still be able to find out what is going on, who is doing what and when but with fewer headings and possibly pictures.

We do hope you will support us in this, with any luck in a few months things may change and print prices come back down a little. We love our magazine and really do wish to continue producing it.

There is lots going on in Wallingford, you'll find it all here in your lovely, local, community magazine.

Have a great October.

Try something new, have fun, stay safe

Naomi xx

communityfirst 100 years
oxfordshire

'The planning consultancy with a conscience'

We provide services to parish and town councils, private individuals, the voluntary and community sector, commercial clients, and landowners.

We understand communities and we know planning - advice is provided by chartered members of the Royal Town Planning Institute.

Visit www.communityfirstoxon.org.
Email info@communityfirstoxon.org or call 01865 883488 to talk to us about your needs.

"Silver Sunday" Afternoon Tea

*Sunday 2nd October 2-5pm
Hedges Law, 16 Market Place,
Wallingford*

In support of this annual event that's been created as a day in the nations' hearts to celebrate older people, do come along for tea & cake in our offices in the town square.

Our specialist advisers will be on hand to chat through any issues you or your loved ones may be facing in later life.



AASVOGEL
The UK's leading waste management solutions

Skip Hire Caged Tipper Waste Management

☎ 01235 760555

✉ info@asvogel.co.uk 🌐 www.asvogel.co.uk

[Mention Window on Wallingford when you call]

GA

Electrical
Plumbing
Fire and Security

Call: 01491 835875

Email - reception@groupga.co.uk
Unit H Moses Winter Way, Wallingford, OX10 9FE

**THE POSITIVE
OUTCOMES GROUP**

NICEIC
DOMESTIC
INSTALLER

gas safe
REGISTERED

Wallingford Methodist Church

St Leonard's Square, OX10 8AS

Sunday Worship 10.30 am EVERYONE WELCOME

The resumption of other activities is planned
Please check the notice boards outside the church for details
or the website www.wallingfordmethodistchurch.org.uk
Contact our minister, Rev. Jocelyn Bennett, with any enquiries.

Tel 01235 813242 email jocelynbennett@methodist.org.uk



CARE DRY CLEANERS

10B St. Martins Street, Wallingford OX10 0AL
Tel: 01491 837318

- Suede Leather • Alterations • Press Services • Wedding Dresses •
- Settee Covers • Rugs • Laundry • Duvets • Curtains

Vacuum cleaners - repairs bags & accessories
Power washers Steam cleaners Carpet cleaners
Scrubber driers Window cleaning poles Sanders



CLEAN MACHINE

1 & 2 St. Peters Place, Wallingford OX10 0BG
01491 825600 Hire & Sales
www.machineshatclean.com
e-mail: info@machineshatclean.com

🐦 @cleanmachineltd 📺 Find us on Facebook /CleanMachineLtd




WATER'S EDGE

PLUMBING & HEATING

Plumbing and Heating Services

Based in Crowmarsh, fully qualified and insured.
Contact our friendly office team for a quick response
to your requirements or to arrange your **FREE QUOTE**

01491 821 626

www.watersedgeuk.co.uk | contactus@watersedgeuk.co.uk

- General Plumbing
- Leak Repair
- Central Heating
- Boiler Repairs
- Boiler Installations
- Shower Installations
- Powerflushing
- Gas Safety Services
- Underfloor Heating
- Estate Agent Services

Proud members of

Checkatrade.com
Where reputation matters

OFTEC **gas safe** REGISTERED

WALLINGFORD RADIO

For the community of South Oxfordshire

107.3FM

Turn on, tune in
Listen online at
<https://wallingfordradio.co.uk>



LOVE HAIR? LOVE FASHION? BE A HAIRDRESSER

Apprenticeships available now!

RR FORRESTERS
Call Forrester: **01491 837 523**
Drop in: **25 High Street, Wallingford**

Forrester4hair.com

 Apprenticeships

A.G. CURTAIN DESIGN LTD

www.agcurtainedesign.com

BEAUTIFUL CURTAINS,
BLINDS & SOFT
FURNISHINGS
01491 834238

Next fabric sale will be
Thursday 3rd & Friday 4th
November 9.30 to 4.30 and
Saturday 5th 9.30 to 1.00pm.

Roll end fabrics from £5.00
per metre - Xmas table-
cloths/runners - Ex display
cushions and lampshades -
all at clearance prices.

VISIT OUR RETAIL STORE
3 ST. PETERS PLACE,
WALLINGFORD, OX10 0BG




Discover Benson House

Benson House Care Home provides dementia, residential and nursing care on a permanent and short stay basis.



Located in Benson, near Wallingford

Often, a person living with dementia will need more care and support as their condition progresses, and there may come a time when moving into a care home is the best option.

We know from over two decades of experience, that dementia is different for everyone, so the care our residents receive is too.

So many things define us as individuals, but dementia doesn't have to. We see the person behind it, and help them live the life they want, to the full.

We get to know our residents and provide care that's as individual

as they are. From their living environments to their care and from everyday activity to their food, we tailor every detail no matter how big or small.

Promoting Independence

Everyone wants to have meaning to their day, and people living with dementia are no different. Residents with dementia are supported to make choices and decisions about their lives.

There is always plenty to do, and the team take guidance from residents and their families to plan varied and fulfilling activities to suit them personally.

Award winning training

We train every member of our team with our unique award winning 'My World' dementia training accredited by City and Guilds.

Our training highlights the importance of meaningful activities and a stimulating environment for people living with dementia, as well as addressing clinical aspects of care, nutrition and the meal time experience.

Reasons to choose us

As the only care home group with its own accredited City and Guilds dementia training, as well as dementia friendly design, and latest technology, you can trust that we go further.

Ask for our full guide to dementia care:

Call freephone 0808 223 5401 or visit caringhomes.org.



The resident's bedroom door opens automatically when they approach and the top section can be left open so they can see what's going on around them.



The latest in sound technology means we don't have to disturb residents at night by opening doors to check on them.

Proud to be rated 'Good' by the
Care Quality Commission



Freephone
0808 223 5401

Online
caringhomes.org

Churchfield Lane, Benson, Wallingford, Oxfordshire OX10 6SH

Benson House

CARING HOMES

WHAT'S ON!

WALLINGFORD COUNTRY MARKET

Wallingford Market is open every Friday morning in St. Mary-le-More Church (behind the Town Hall) between 9.30 a.m. - 12 noon, where we sell a range of Baking, Plants & Produce, Preserves, Honey, Eggs (when available) and Crafts. The market has been a popular feature of the town for nearly fifty years.

However we are sorry to say that the number of Bakers has decreased. So to ensure we continue to offer a good range of baked goods, from October the Bakery Table will only be available on the **first and third Fridays of the month, (i.e. 7th/21st Oct., 4th/18th Nov., 2nd/16th Dec., with an extra special Christmas Market 23rd Dec., our final one of 2022).**

We return after the Christmas break on the third Friday, 20th January, 2023.

A special 'Apple Day' has been arranged for 7th October, and Mince Pie Tasting is planned for 18th November, also the start of Christmas Orders for most baked items we sell.

It is important to note - there is no change to the availability of the rest of the products sold – plants, produce and craft, which will still be available every Friday at the church.

Baking will return to being available each Friday if we can recruit new bakers. So, if you love to cook, (sweet or savoury), and feel that you may like to join us, please contact **Alison (our Market Manager)** for further information: **Tel. 01491-681596 or pop into market one Friday morning** and speak with her, or any of the bakers. You would not necessarily have to bake every week – but any additional help is going to be very much appreciated.

Benson Garden Club

Benson Garden Club's **membership year runs from October to September**, with an annual programme of events, **so now is the ideal time to think about joining us.** This thriving local garden club, which has been running for over 25 years, currently has over 80 members. We offer a warm welcome to new joiners, both experienced and new gardeners, and the club continues to delight existing members with a tried and tested format for our annual programme of events.

Our monthly speaker programme runs from October to May (on the first Thursday of the month). Doors open at 7.15pm for a 7.45pm start and take place in Benson's recently refurbished parish hall (Sunnyside, Benson, Wallingford OX10 6LZ). The talks last approximately 60 - 75 mins. For our new members, if you don't know anyone, please let us know when you arrive so that we can make you feel welcome and make some introductions

We also tend to have **one "big" event each year** with a well-known speaker. As mentioned in last month's edition, **Nick Bailey will be opening our series of talks on Thursday 6th October 2022.** Visitors are very welcome to attend for £10 each – just turn up on the door, no need to book.

Nick Bailey is a freelance horticulturalist, best-selling author, award-winning TV presenter, garden designer and speaker. "Revive Your Garden" will be a practical and inspirational talk catering to those who seek to bring their existing outdoor space back to life or those who have newly acquired a shabby garden (including first-time gardeners). Nick will focus on practical achievable ideas, garden techniques and simple design solutions for gardeners old and new.

Further information about our club and how to join as a member can be found on our website <https://bensongardeningclub.weebly.com> or please feel free to email bensongardeningclub@gmail.com

Liz Harrison

Thameside (Wallingford) u3a

Autumn brings another programme of varied activities for our members. We are always keen to form new interest groups when there is sufficient demand and so we're delighted that "Singing For fun" is starting up again soon.

The Thames Valley Network (TVN) Study Day at William Morris's house Kelmscott Manor was very enjoyable and due to popular demand they are hoping to organise another couple of tours in Spring next year.

This month the outings committee have arranged a trip to Coventry Cathedral, plus the Guild Hall or Transport Museum. In November they are **planning a trip to the Amazon Fulfilment Centre** which will solve the mystery of where all those cardboard boxes come from!

Hot on the heels of Wallingford Museum's Agatha Christie event last month our October talk is **"A is for Arsenic - the Poisons of Agatha Christie"** presented by **Dr Kathryn Harkup.** Next month **John Ericson will talk about The Wind in the Willows.**

Monthly coffee mornings in Centre 70 on 1st Friday from 10.30am to noon are an opportunity for members to get together, and for potential members to find out about our activities. **Our speaker meetings are on 3rd Wednesday at St. Mary-Le-More church at 2pm.**

To find out more about this u3a please visit our website at: www.wallingfordu3a.org where you will find contact links.

Neil Kelly, u3a Committee

Henley and District Stamp Club

The evenings are rapidly drawing in so time to think of a new hobby. If you are interested in anything to do with the post, stamps, old letters, postcards or would like to know more come to Bix one Wednesday evening. You will find an absorbing hobby, covering many subjects and the opportunity to do research into different aspects of 'philately'. Help and advice to start or to increase your knowledge is willingly given.

Wednesday 12th October - An experimental evening trying out Power Point for our displays.

Wednesday 26th October - Members evening - Telling a story in 2 xA4 pages or 1 x A3 illustrated with different philatelic items.

Any topic you like. **Meetings are held the 2nd and 4th Wednesday of the month at Bix Village Hall 7.30 p.m.**

Visitors and new members are welcome. Further details can be obtained by phoning **01491 681739** or on our website: - www.henleyphilatelic.org.uk

Wallingford Methodist Church Centre

Books and Bacon Baps - an autumn event for hungry book lovers is happening in Wallingford on Saturday October 15th.

Wallingford Methodist Church Centre, in St Leonard's Square, will be **open from 10 am until 1pm** selling a wide selection of secondhand books plus teas, coffees and bacon baps for breakfast, elevenses or brunch.

Vegetarian, gluten and dairy free alternatives will also be available to buyers wanting to bag a bargain or two.

The monthly lunch served at Wallingford Methodist Church Centre takes place on Tuesday October 4th from 12.30 pm.

The afternoon tea, from 3-4.30 pm, will be on Tuesday 18th this month.

Afternoon tea includes sandwiches and cakes and costs £3, a freshly cooked 2 course lunch costs £5.50. All are welcome and there is no need to book.

WHAT'S ON!

Sunnyside Jazz Club, Benson

Emma Rawicz Quintet, Friday 21st October 19:30 - 22:00

Benson Parish Hall, Sunnyside, Benson, Oxon, OX10 6LZ

Website: <https://sunnysidejazzclub.co.uk> Email: sunnysidejazzclub@saxbandits.co.uk

MURDER, MYSTERY AND MAYHEM is the title of two one-hour walks that I will be giving around Crowmarsh Gifford in October. Each walk will delve into some of the unexpected, unusual and unsolved events in Crowmarsh's lively past.

The walks are on **Saturday 22 October and Sunday 23 October, both starting at 2pm**. Cash-only donations (£10 per person) will be collected at the start of each walk, **in aid of St Mary Magdalene's Church, Crowmarsh, and St Mary's Church, Newnham Murren** (aka Crowmarsh Parochial Church Council – Crowmarsh PCC).

We will meet and finish at the **Crowmarsh Gifford side of Wallingford Bridge**, gathering at the top of the now-closed-off, former access road to the riverside.

If you have any questions or would like further details, please contact me, Edwina Johnson, on (01491) 832266 or email: edwina.johnson@ntlworld.com. Thank you.

Wallingford Photographic Club

Wallingford Photographic Club is now back at Crowmarsh Pavilion for the season. Our inclusive club allows people of all ages and levels of experience to meet like-minded individuals and learn how to improve their photography through conversations with other members, presentations by visiting speakers, practical evenings and regular competitions. **The club meets every Thursday at 7.30pm for an 8pm start (7.45 start on competition evenings)** and we'll have a few Zoom-only sessions later in the season.

Our sessions at the Pavilion in October will take us to **Japan on the 6th (with Ric Gillams)**, before our resident (retired) judge **Gordon Roberts takes us through a critique of our own images on the 13th**. On **20th October we'll have Helen Webb take us 'from humble beginnings – a journey from "a bird on a stick" to 'high key'**. Finally on **27th Neil Cave joins us from Timeline Events with a talk entitled "Inspire, Capture, Print"!**

Howbery Business Park

Free tree trail offered for families at Howbery Business Park during October half term holidays

During the October half term holidays, Howbery Business Park is inviting families to come into its grounds to try out its new Tree Trail. **Families will be able to pick up a free Tree Trail pack with map from the Manor Café from 24 to 28 October between 9am and 4pm.**

The trail goes round eleven of Howbery's notable trees – a short description of each is in the map. **The grounds are open until 6pm** and are only a short walk via a footpath from Crowmarsh Recreation Ground. There is a bus stop outside the site and ample free parking.

Children's snacks and lunches will be available at the Manor Café during half term week. The café is open to the public on working weekdays.

Wallingford & District Art Club

Wallingford & District Art Club will be hosting an **online demo by professional artist Les Darlow at 7.30pm on Tuesday October 18th**. Les specialises in using soft pastels to create expressive landscape paintings which capture the feeling, light and energy in a scene. In particular, he loves studying and painting skies, whether a stunning sunset or snow storm, and having them as the key element in his artwork.

If you would like to join us for what should be a fascinating evening watching the drama of a 'Sunset in pastels' appear on paper, please contact admin@wallingfordartclub.org.uk or visit our website www.wallingfordartclub.org.uk for further info about the club's activities and how to become a full member.

Riverside Repair Café, Saturday 15th October, 10am-1pm

If you have something broken or needing repair, and would like help learning how to repair it*, you are welcome to bring it to the third Riverside Repair Café, Saturday 15th October, 10am-1pm, in the garden of Eastgate House, 1 High Street, Wallingford. Access is via the Green Door opposite the Boat House pub, just next to Wallingford Bridge. Volunteer repairers will be there rain or shine to help you with your repairs: Woodwork, Sewing, Sharpening, Bicycles, Small Electricals, China, etc. Light refreshments available. The garden allows plenty of space for social distancing and gazebos let us get on with the repairs rain or shine. <https://www.facebook.com/groups/RiversideRepairCafe>

* Have something fixed that would otherwise go to landfill and learn a new skill at the same time. Please note all repairers/teachers are volunteers, so all repairs are free, but with no guarantees of success.

Meadows Morning Market

A reminder of the remaining 2022 Market dates:

Saturday 29th October

Saturday 26th November – Christmas event

For all enquiries contact:

John Jenkins MBE John.jenkins999@btinternet.com Mob: 07976 297835

Goring Heath Bridge Club

Goring Heath Bridge Club is due to **start their season on 6th September** and are looking for new members.

We play Duplicate Bridge on **Tuesday evenings at the Community Centre in Goring** and are a small friendly club and not affiliated to the EBU. Ideally, we are looking for 2 or 3 pairs to join but we may be able to match individual players if you don't have an established partner.

Our standard of play ranges from competent to intermediate so if you fall into this bracket (or above) you would be very welcome.

If you feel you would like to give us a try then please contact our treasurer, Linda, on lharris8676@gmail.com or our chairman, Tony on a.robinson278@btinternet.com or mobile no. **07836522640**.

We would love to hear from you.

Winterbrook Garden Services Ltd

Garden Design, Construction & Maintenance

Fencing
Patis

Full Pruning Service

Tel: 01491 838189

Mobile: 0775 36 36 333

winterbrookgs@gmail.com



Winterbrook Garden Nurseries

High Road, Brightwell-cum-Sotwell,
OX10 0PS

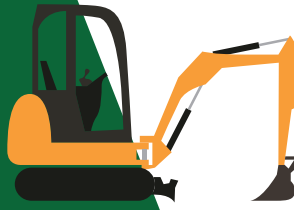
Independent plant nursery
specialising in herbaceous
perennials
& garden curios

www.winterbrookgardennurseries.com

@winterbrookgardennurseries

G.R. Galliford

Graham
07762 650 809
01491 824583



Mini Digger
with Operator
Block Paving
Driveways
Patis
Drop Kerbs
Groundwork

g.galliford@btinternet.com



THE WALLINGFORD BOOKSHOP
10C ST. MARTIN'S STREET
WALLINGFORD, OXFORDSHIRE OX10 0AL
Telephone / Fax: 01491 834383
Email: books@wallingfordbookshop.com

We offer friendly informed assistance and an excellent range of books, audios and fine art stationery.

Many titles not stocked can be obtained within 24 hours.

SHOE
REPAIRS

ENGRAVING

KEY
CUTTING



FEET FIRST



21 St. Mary's Street, Wallingford
Contact Gary on: 01491 825224

WATCHSTRAPS
BATTERIES

STITCHING
REPAIRS

TRAVEL GOODS
LUGGAGE

Benson Angling Centre

Your Friendly Local Angling Centre

Unit 3, Benson Waterfront,
Benson Wallingford OX10 6SJ

Tel: 01491 838288

Email: dibby1949@yahoo.co.uk



Stockists of Drennan E.S.P. Dynamite Baits, Sticky Baits, Baitech, Dead Baits and Live Baits Available. We buy and sell all used angling items

Busy Baskets Nursery trading as:



A multitude of varieties & colours of bedding, basket, border and patio plants all grown on the nursery

Best selection of Winter/Spring flowering Pansies

Basket & Container Planting Service

Autumn Season Sept - Nov • Open 7 days a week 10am - 5pm
142a Wantage Road, Wallingford, OX10 0LU.

01491 833 831 www.purelyplants.co.uk



Wallingford Tyres & Exhausts



FRIENDLY, PROFESSIONAL SERVICE
AT COMPETITIVE RATES

PHONE: (01491) 824145 FOR A QUOTE

or call in at: AYRES YARD, STATION ROAD,
WALLINGFORD, OXON.

OR BY APPOINTMENT OUTSIDE WORKING HOURS

Mon.-Fri. 8.30 a.m.-5.30 p.m. Sat. 8.30 a.m.-1.00 p.m.

(Just past the Esso Garage on the way to Didcot)



INSPIRATION CREATION TUITION

1 Ayres Yard, Station Road, Wallingford, Oxon OX10 0JZ

T: 01491 838005 E: kerif@wallingfordflowers.co.uk

www.wallingfordflowers.co.uk

HOWARD CHADWICK FUNERAL SERVICE

A caring family owned and managed Funeral Service

- Dedicated Private Chapel of Rest •
- Golden Charter Pre-Paid Funeral Plans •
- Specialists in Memorial Stones and Designs •

33 Benson Lane, Crowmarsh Gifford,
Wallingford OX10 8ED

Tel: 01491 825222

www.chadwicksfuneralservice.co.uk



Golden Charter
Funeral Plans

Oxfordshire Wildlife Rescue

Hold on, weren't they on TV the other day?

We certainly were! BBC Countryfile showed our animal hospital in Blewbury and the work we do with all kinds of wildlife including a tiny baby hedgehog (sooo cute!), orphan swifts and an injured kestrel.

It's still available on BBC iPlayer if you didn't catch it at the time.

Could you help us help wildlife?

The number of animals needing help is sky-rocketing! So, we are always in need of new volunteers, for fundraising, site maintenance and also for animal care.

If you could do any of these:

- Paint an outside pen
- Build a hedgehog house (from pre-cut wood)
- Water the plants and sweep up

... then you could help with the programme of refurbishment and development of our outdoor pens, paddocks and aviaries. We need to get the animals no longer in need of nursing care out of intensive care (and away from humans) and into larger enclosures while they build up their strength ready for release

If DIY isn't your thing, could you perhaps:

- Help man a fundraising stall at a village fête
- Hold a coffee morning, at your work or home, to raise funds?



We are currently recruiting,
Volunteers
to expand our family & help us save wildlife!

It just takes a pair of willing hands and a willingness to get stuck-in! (Materials, protective equipment and a cuppa provided.)

You'll get to see some of the animals close-up, and you'll know that you're helping make a difference for wildlife.

If you could spare just a few hours each week, whatever you would like to help with, we'd love to hear from you, ideally via email at recruitmentowr@gmail.com. Or if you don't do email, call Susan on 0790 320 7184 evenings.

Thank you from the animals.

We're on FB, Twitter and Instagram, so do follow us for our latest news.

Crowmarsh Gifford C.E Primary and Pre-School

Co-Opted Governor Advert

The Governors of Crowmarsh Gifford C.E Primary and Pre-School are looking to build the strength and expertise on our board within three areas, HR, Information Technology (IT) and Finance and are inviting applications from those who would like to join us in contributing to the welfare and education of young people during their formative years.



No special qualifications are needed to be a Governor and the most important thing is to have a keen interest in the school and be prepared to play an active part in the Local Governing Body's work. Training is available for all governors with an expectation that new governors will complete free induction and safeguarding training modules online.

- **The Full Governor meetings normally start at 7pm, lasting for 1.5 to 2 hours, and we meet approximately 3 times a year.**
- **There is also a requirement for governors to spend time in school hours to carry out targeted Governor Visits (1 per term).**
- **Governors are expected to join either the 'Resources Committee' or the 'Curriculum and Standards Committee', which also meet 3 times a year each for 1.5 – 2 hours.**

If you feel you have the time and desire to make a difference and the relevant experience, past or present in the areas we require, we would be very keen to hear from you. **Please contact Angus Brettell and Tim Crossingham via email office.3200@crowmarsh-gifford.oxon.sch.uk.** You might also like to visit our website at <http://crowmarshgiffordprimary.com> Please let us know by 31st October if you are interested.

Local residents have been learning Pilates in our historic building for the past 20 years. I lived opposite the former studio as a newly married Air Force wife, wondering what on earth Pilates was!

After the birth of our third child, having become a convert to this transformative and intelligent way of exercising, I completed an apprenticeship with world-renowned Alan Herdman. When the chance arose to buy the studio 12 years ago I leapt at it and since then I, and my team of wonderful teachers, have been welcoming clients to matwork classes (simultaneously live and on ZOOM), 1-2-1s, individually-tailored equipment sessions and Ballet Barre classes in our beautiful, spacious and fully-equipped studio.

Pilates is suitable for people of any age and fitness level who want to improve their strength, posture, suppleness and sense of well-being, both physical and mental and our aim is to help everyone to achieve their individual potential. We offer all new clients a very relaxed Introductory session where we assess their posture and movement patterns, discuss any medical or injury history and explain the basics of Pilates so that they can gain an understanding of how Pilates will benefit them. By assessing and responding to each client's unique requirements, we direct them to an appropriate class where, under hands-on experienced guidance, they enjoy sessions that are friendly, fun, varied and engaging. If you want to learn more, please give us a call or just pop into the studio. We'd love to see you!

Hilary Warren



Ptolemy House, Reading Road, Wallingford OX10 9DN
01491 826286
www.pilatesonthegreen.co.uk

The leaves are falling but the books are springing up in The Wallingford Bookshop!

The beginning of autumn means loads of new books with something for everyone! To make sure there's enough time to get all the books in for Christmas, big new books start arriving from September and, like every year, there is so much to choose from! There is the new **Robert Harris, Act of Oblivion**, and **Minette Walters's The Swift and the Harrier**, which I am particularly excited about as I am currently studying the 17th century. **Kate Atkinson** and **Barbara Kingsolver** are both bookshop favourites and both have beautiful new novels out with **Shrines of Gaiety** and **Demon Copperhead**.

Wallingford's most famous resident and the greatest crime writer, Agatha Christie, is very in vogue as Lucy Worsley's new biography **Agatha Christie: A Very Elusive Woman** is complemented by **Marple: Twelve New Stories** where 12 celebrated modern female novelists, including Val McDermid, Lucy Foley, Karen M McManus and (my absolute favourite author!) Elly Griffiths, imagine Jane Marple into 12 ingenious new mysteries. **The Christie Affair by Nina de Gramont** also comes out in paperback, a fictional account of Christie's 11-day disappearance. **Richard Osman's third crime novel, The Bullet that Missed** is released and I think Joyce and Poirot's Captain Hastings would have got along very well, as they caretake their clever, but tricky, friends!

Here at the bookshop, we are here for all your bookish needs, even more so with Helen as the new owner! Thank you for all your kind wishes to both of us – I am very lucky to stay working in a place I love, with all you lovely customers, and to see how the shop will go from strength to strength with Helen at the helm – she is AMAZING. Ali x



FAMILY PAGE

“The Together Fund - Low Income Family Multi Sports Project”



Thanks to fantastic support from Active Oxfordshire, the team at the Wallingford Sports Park are delighted to announce, in association with its 8 member clubs, a funding pathway to enable more people to get involved in local sports.

- If you fancy joining in with Tennis, Petanque, Squash, Hockey, Rugby, Football or Skittles but are worried about fees then do contact us.
- Think sports are too strenuous? Walking tennis and Petanque are a great way to socialise in a less physical way
- Fancy trying to get back into sports but not sure how to do it? Contact the sports park manager on manager@wallingfordsportspark.co.uk to ask about sports and funding available
- Junior sports sides and coaching available in football, rugby, hockey and tennis
- Wallingford Wolves -Tag rugby for people with special needs

Starting September 11th at Wallingford RFC

Tag rugby is a fun and exciting variation of non-contact rugby. Players wear belts around their waist and Velcro tags are attached to each hip, there's no tackling and no collisions. It's extremely safe and doesn't require any special skills to get started. Players learn physical skills like running, throwing, and catching and also develop social and personal skills such as teamwork, discipline, and resilience.

Wallingford Wolves cater for all needs and abilities to provide children and adults with opportunities to grow in confidence, develop social skills, get fit and make friends.

The Wolves are led by volunteer coaches who have experience of working with people with special needs, are RFU-qualified and DBS-checked.



If you are interested in joining us and would like to come down for a free taster training session (you can have three before registering), please contact John Peel at johnpeel64@gmail.com

All of those families that are interested are encouraged to sign up to YouMove <https://www.getoxfordshireactive.org/you-move>



Wallingford Christian Assembly, Atwell Close – Senior Friday Club

Friday Club has been run by Wallingford Christian Assembly for over 40 years since its beginnings in the Scout Hut. We are pleased that some of the current members have parents or even grandparents who attended as youngsters. It is an outreach provided free by the Wallingford Christian Assembly in Atwell Close.

As well as a Junior Club which runs from 6pm to 7pm during term time, a Senior Club runs from 7.45pm to around 9pm on the 1st, 3rd and 5th Fridays of the month. The Senior Club is open to all children of secondary school age.

A typical Friday night will include a message from the Bible, games and light refreshment. From time to time we take the children on outings such as walks up Wittenham Clumps or hire the sports facilities at the secondary school for a game of football. A widely anticipated trip is a visit to McDonalds in Benson which we usually do once a term.

The Bible message lies at the heart of what we do. We often take the opportunity to address questions that teenagers have such as “can we believe the Bible?”, “does sin matter?” and “why did Jesus die?”. The messages are often taken by some of the young people from our Church who are in touch with the issues that teenagers are facing.

If you would like further information please email us : info@w-c-a.org.uk. Alternatively you can follow us on Facebook : <https://www.facebook.com/WallingfordFridayClub>.



CHEMISTRY TUITION - JASMINA HARRISON

Chemistry tutoring by a highly experienced former Head of Department at a local independent secondary school



Tuition at secondary level including GCSE, A level & IB
Offering personalised tuition at my home in Dorchester or can visit students in Dorchester, Benson, Wallingford and Goring areas.

In person and online.

Skilled in building confident students at all levels of Chemistry, enabling them to achieve their potential.

07753816716 • jasmina@rwhconsulting.uk

Tom Cottrell Landscapes

EST 1974 Family Run Business

Telephone: 01491 836974

All tree aspects - Dave Cottrell

- Felling • Reducing • Reshaping
- Thinning, Removal • Pollarding
- Shrub & Tree Pruning • Dead Wood
- Removal Hedge Management
- Stump Grinding

Garden & Landscaping Services

- Turfing • Hedge & Grass Cutting
- Planting • Fencing • Patios
- General Garden Maintenance
- Garden Renovation & Construction
- Woodchip Mulch
- Seasoned Logs & Kindling Wood

www.tomcottrelllandscapes.com

Email: tomcottrelllandscapes@gmail.com

Orchard Cottage, High Road, Brightwell-cum-Sotwell, Nr Wallingford, Oxon OX10 0PS

Sunshine Painting & Decorating

LANCE THOMPSON
FRIENDLY RELIABLE SERVICE

For All Your Decorating Needs
Call For A Free Estimate.
07780 221950

lance.sunshine@btopenworld.com www.sunshinedecorating.co.uk

[@sunshinedecorator](https://www.facebook.com/sunshinedecorator) [@sunshine_pd](https://www.instagram.com/sunshine_pd)

FULLY INSURED | CHOLSEY, OXON

Wallingford Local Producers Market

Fresh, local food and handmade crafts



We're back in **St Mary's Church** (Market Place)

Every Saturday from 10am – 12:30pm

Join us and support local micro businesses for cakes, cheese, meat, organic veg, bread, honey, eggs, bird food, ceramics, paintings, jewellery, turned pens, fabric and textiles, art glass, personalised gifts.... And so much more!

wipm.org.uk

[@wallingfordlocalproducersmarket](https://www.facebook.com/wallingfordlocalproducersmarket)

Paddocks Pre-School

Paddocks Pre-school
Paddock Road
Wallingford
OX10 9LT
www.paddockspreschool.com

A friendly preschool environment offering a wide range:

- Flexible sessions for 2 – 5 year olds
- Universal 15 hours funding for 2, 3 & 4 year olds
- Extended 30 hours funding for 3 & 4 year olds
- Large Garden & Forest School
- After school care available
- Holiday play schemes for 2-8 year olds



For more information or to arrange a visit, please call **01491 825333** Charity Number: 1001964
or email info@paddockspreschool.com

Don't forget:
Tell them you saw
their advert here!



Our fabulous advertisers make your magazine possible – please use them

JIM PINK

Service Centre and Car Sales
15 Wood Street, Wallingford OX10 0AY

HYBRID/ELECTRIC SPECIALISTS

- Free Battery Check
- Free Light Check
- Free Antifreeze Check
- Annual Service
- Batteries from £49.95 + VAT Fitted Free
- MOT testing
- 4 Wheel Laser Tracking
- Air Con Servicing (Inc.R1234YF type)
- Air Conditioning Regas from £69 inc VAT
- Diagnostics
- Tyres fitted at very competitive prices
- We now have a fully qualified technician to work on Hybrid/Electric Cars

FREE COLLECTION or we can provide a COURTESY CAR
Call **01491 836 • 017 01491 836 022 • 07342 630396**
email info@jimpink.co.uk www.jimpink.co.uk

customer care without compromise

CHEQUERS GARAGE

Fullers Road, Aston Tirrold, Oxfordshire OX11 9EN
info@chequers-garagedidcot.co.uk
www.chequers-garagedidcot.co.uk

At Chequers Garage we look after our customers as well as their cars. That's why we have courtesy cars, offer local collection and delivery, explain your invoice in plain English and every car is washed before it is returned - not only will your car run well, it will look great too!

- MOT
- SERVICE
- TYRES
- AIR CON

the Good Garage Scheme

Call today on 01235 850347

Wallingford Christian Assembly brings you:
A message of Hope from the Bible

Faith cometh by hearing and hearing by the Word of God (Romans 10:17, the Bible)

Join us online
Every Sunday @ 17:00
20 min message

We invite you to hear a short message from the Bible, available from the comfort of your own home.

To watch live:
Zoom ID: 491 229 776
Passcode: 316

Not able to join on a Sunday – catch up on demand:

[@Wallingford Christian Assembly](https://www.youtube.com/channel/UC...)

[@GodsGoodNews](https://www.facebook.com/GodsGoodNews) (God's Good News for South Oxfordshire)

Wallingford Christian Assembly
www.wallingfordchristianassembly.org.uk



WHAT'S ON

AT THE CORN EXCHANGE, WALLINGFORD



CINEMA

All regular performances normally start at 7:30pm unless stated otherwise. Please note that we will start on time and that latecomers will only be allowed in after the start of the film where there is no disruption to sitting patrons. This means that we may have to reseat some latecomers. For Live Screenings we reserve the right to seat latecomers in the Curtis Room where there is a large screen relay. The bar and auditorium will open from 7pm so there's plenty of time to collect drinks beforehand.

Due to significant increases in our energy costs, the Corn Exchange is having to raise the cinema price for Adults to £10 for all showings as from 1st October 2022. Under 15 prices will remain at £5. Prices for live screenings will also rise to £18 (adults), £15 (over 60s) £10 (under 18s) for showings from that date

We will be bringing back matinee performances in October, initially on Wednesday and Saturday afternoons at 2:30pm. Please look at the website for updates. This is being done for an interim period but will continue if there is sufficient demand.

Tickets £10 for Adults and £5 for under 15s unless otherwise stated.

Sunday, 2nd October, 7:30pm
Monday, 3rd October, 7:30pm
Tuesday, 4th October, 7:30pm
Friday, 7th October, 7:30pm
Saturday, 8th October, 2:30pm
Saturday, 8th October, 7:30pm
Sunday, 9th October, 7:30pm
Monday, 10th October, 7:30pm
Tuesday, 11th October, 7:30pm
Wednesday, 12th October, 2:30pm
Thursday, 13th October, 7:30pm
Friday, 14th October, 7:30pm
Saturday, 15th October, 7:30pm
Sunday, 16th October, 7:30pm

The Forgiven (18)
The Forgiven (18)
The Forgiven (18)
See How they Run (12A)
See How they Run (12A)
See How they Run (12A)
See How they Run (12A)
Mrs. Harris goes to Paris (PG)
Mrs. Harris goes to Paris (PG)
Mrs. Harris goes to Paris (PG)
Mrs. Harris goes to Paris (PG)
Ticket to Paradise
Ticket to Paradise
Ticket to Paradise

Wallingford Museum News

Just about everyone has heard of Agatha Christie – even if they've never read one of her books or even watched a 'Poirot' or 'Miss Marple' on TV. She's the best-selling author since Shakespeare, with work translated into over 100 languages!



But how many locals are aware that she spent 42 years as a resident of what's now South Oxfordshire? She and her second husband, archaeologist Max Mallowan, lived on the outskirts of Wallingford. 'Mrs Mallowan' shopped in the town, loved the annual pantomimes by the Sinodun Players, had friends in her neighbourhood of Winterbrook and worshipped at her Parish Church of St Mary's in Cholsey.

Today her grave in the churchyard there is visited by hundreds of well-wishers every year from all over the world. Intrigued? Well now you can find out much more in the newly published 42-page fully illustrated book:

At Home with Agatha Christie: the Wallingford and Cholsey Connection

The new book opens the door to give a rare glimpse of Agatha's real home at *Winterbrook House*, drawing on the varied memories of those who knew and met her. These reminiscences have been gathered over the years by local authors **Judy Dewey and Tony Rayner** who have now brought them together to tell a unique and fascinating story.

The book is available in Wallingford Museum for £8.50, where you can also see the splendid Agatha Christie exhibition and view some of her original hand-written letters. wallingfordmuseum.org.uk It can also be purchased at www.piepowder.co.uk and some local bookshops.

The Wallingford Historical and Archaeological Society

Visitors are welcome to attend the next TWHAS talk on Wednesday 12 October at 8.00pm in St Mary's Church, Wallingford (visitors £4.00). Professor Michael Fulford will be speaking on **'Silchester Revealed: the Iron Age and Roman Town in light of recent research'** Silchester is now one of the best known towns in Roman Britain and the Roman world more widely. Michael Fulford, who has been Professor of Archaeology at Reading University since 1988, has led work at Silchester throughout the long periods of excavation there over many years. He has also published an acclaimed book on the discoveries made and we are fortunate to have him to share his experiences with us. We hope many will join us for his talk.

<https://www.twahas.org.uk/meetings-programme.html>

Sue Wright, Wallingford Museum

REACHING FOR THE STARS!

Childcare Choices
WE NOW OFFER TAX-FREE CHILD CARE!

Stagecoach Wallingford
Singing, dancing and acting classes for 4 - 18 year-olds

🌐 stagecoach.co.uk/wallingford
☎ 01235 390 810
📍 Wallingford School, OX10 8HH

STAGE COACH
Creative Courage For Life!

TRAFFALGAR ENTERTAINMENT | COMPANY

Shaun Guard

TV & WIFI SERVICES

- **Aerials** - supplied, repaired & poor reception solved
- **Satellite** - Sky Q dish upgrades, discreet dish installation also foreign TV
- **Internet** - blackspots cured, data cables to your TVs / computer
- **TVs** - hung on your wall or set up & tuned

OXFORD AERIALS

Call Wallingford
01491 833282
www.oxfordaerials.co.uk

Have you a Lasting Power of Attorney?

Anyone can have a stroke, accident, dementia... and lose mental capacity with age

HELP-PEN-HAND

Who will speak for you?

Learn about LPAs for just £35.
Contact me and I will help you. Val Wolsey
01491 836820 | HelpPenHand@gmail.com

PILATES on the green

Whether you're a keen sportsperson wanting to perform better, a young mum needing time and space to reconnect with your body or you're working from home and feeling the effects of hunching over the kitchen table, we have a class to suit you!

We are a friendly, well-established & spacious studio in Wallingford welcoming clients of all ages and abilities.

- Ballet Barre Pilates Classes – NEW!
- Group Matwork Classes (live and on ZOOM)
- Personally Tailored Equipment Sessions
- 1-2-1 Appointments

Please contact us to discuss how you could benefit from Pilates!
Hilary: 07759219130 / 01491 826286
hilary@pilatesonthegreen.co.uk
www.pilatesonthegreen.co.uk

St Mary's & St Leonard's Wallingford
open to God, open to all

8am St Leonard – Holy Communion
10am St Mary-le-More – Parish Communion with Children's Church, All Age Worship or Family Service (also live-streamed)
6.30pm St Leonard – Evensong

www.marylemore.co.uk
Team Rector: The Revd David Rice Tel: 01491 202188

YouTube

Dr. A. Ratti BDS (Hons) Kings College London

ST MARY'S DENTAL PRACTICE

New patients welcome
Affordable quality private dental service from a caring team
New maintenance plan available from Jan 2018
Call for more information
01491 825 252
www.stmarysdental.co.uk



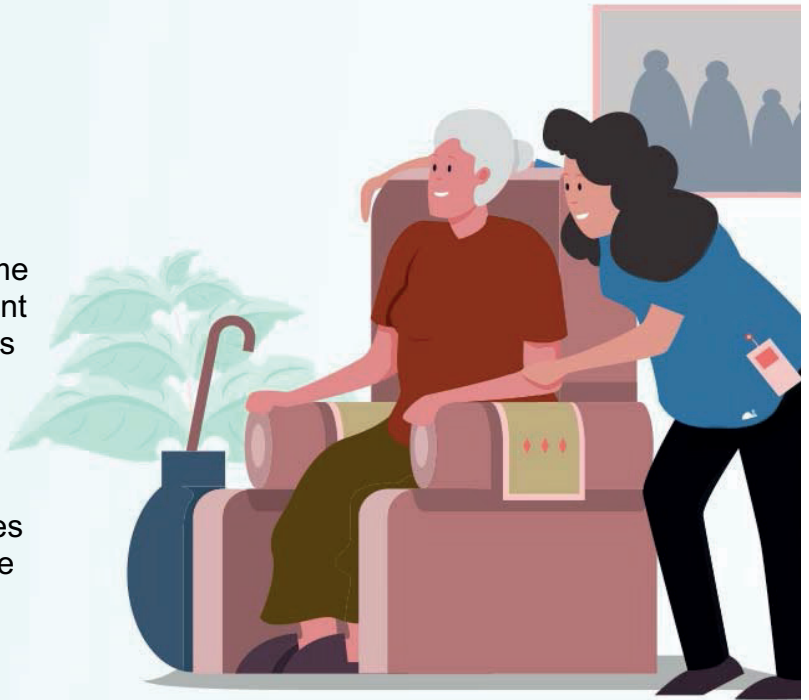
Q1Care

Do you, or a loved one, require support at home?

Q1Care prides itself in offering 'high quality' home care to enable people to stay safe and independent at home. We offer as much, or as little, support as required. From *companionship, practical help,* through to *complex needs.*

Work with us?

Become a valued employee, join a team that cares and make a difference to your community. Please email: heloise.slater@q1care.co.uk for more information.

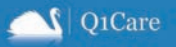


Home Care across West Berkshire & South Oxfordshire

Email us: info@q1care.co.uk / heloise.slater@q1care.co.uk

Call us: 0118 932 3865

Visit us: www.q1care.co.uk



Crosby Engineering

Latest Diagnostic Software
All Makes & Models Serviced & Repaired
Laser 4 Wheel Alignment
MOT
Air Conditioning servicing
Free Local collection
Audi BMW Mercedes VW Specialist
Family Run Buisness In Wallingford Since 1980

01491 834544

Unit F The Croft
Whiteley Road
Hithercroft Ind Est
Wallingford
Ox109rg

No Problem No Call Out Charge

Gutters Cleared

We remove leaves - moss - grass - growth & debris

12,500+
★★★★★
REVIEWS

Photos
Before & After
We do a camera survey first

Go High
4 Storeys, Commercial,
Schools, Hotels & Industrial

Damp & Mould
Can be caused
by blocked gutters

Weight & Damage
Up to 50kg of debris
straining your gutters

Get an instant price
01491 815 450

or online
gutterpro.co.uk

Don't forget:
Tell them you saw
their advert here!



Our fabulous advertisers make your magazine possible – please use them

Quakers

Are you interested in exploring a different spiritual path?
As Quakers we help each other as we live our lives,
guided by experience rather than doctrine.

Come and find out

Sundays 10.30 am

Quaker Meeting House, 13 Castle Street, Wallingford

Website: midthamesquakers.org.uk



From
£895*
for a fully
fitted electric
garage door.

Gotta get a Garolla.



Garolla garage doors are expertly made to measure in our own UK factories, they're strong and solidly built. The electric Garolla door rolls up vertically, taking up only 8 inches inside your garage, maximising valuable space. Our expert local installers will fit your new door and they'll take away the old one too, so there's no mess.

Give us a call today and we'll come and measure up **FREE** of charge.

GAROLLA
ROLLER
SHUTTER
DOORS



www.garolla.co.uk

CALL US TODAY ON:

01235 280 072

MOBILE:

07537 149 128

LINES OPEN 7 DAYS A WEEK

*Offer valid for openings up to 2.4m wide & including 2 remote controls, 55mm white slats, internal manual override.

We're your
computer
support store
in Wallingford.

PC TECHNICIANS

WINDOWS | APPLE | ANDROID

Unit B, The Croft, Whiteley Road,
 Wallingford, OX10 9RG

Open Mon-Fri 8:30am-5:30pm



REPAIRS & INSTALLATION

PC Technicians offer fixed price services in-store, on-site, and over the Internet via remote access. We cover everything from virus removal to data transfer.

CLICK & COLLECT

100's of products handpicked by us available for sameday click & collect. Everything from cables, mice, keyboards and laptop bags to hard drives, ink and toner.

Tel: 01491 825449
www.thepctechnicians.co.uk

Wallingford Parish Church Choir go to Durham

Durham – domain of the Prince Bishops, shrine of St Cuthbert, a stunning Norman cathedral on a hilltop nearly surrounded by the meandering River Wear far below – it's quite a place!

Some 30 members of Wallingford Parish Church Choir spent the last week in August singing services at the cathedral. In what was more like a summer school than a holiday, the choir had to sing different music each day, rehearsing up to 4 hours in a nearby church and then in the cathedral before evensong. But there was time for fun and socialising, and on their day off the younger family groups headed up the coast for beach and fish & chips, while the remainder visited Hexham Abbey at the invitation of Henry Hope who is now a curate there – he previously had a placement at Wallingford – and another evensong was sung in Hexham.

Our organist was Matthias Herbst, who got to know the choir when he worked in Wallingford some years ago. Matthias now lives back in Germany, and said, 'I'm always pleased to be invited back as the choir are my friends, and how else would I get to play these great cathedral organs?'

Services were live-streamed and evoked positive comments on Facebook that included 'fabulous anthem, magnificently sung.... glorious choir... beautiful music & singing.... I will miss the wonderful voices of our visiting choir and thank them.' Cathedral officials said, 'beautiful music... I hope you've booked your place to come and sing here again.'

So at the end of the week, tired but triumphant, the choir returned home, full of praise and thanks to Judith for leading them through the week.

Open rehearsal – Saturday 8 October

Would you like to sing in the church choir? We're always on the lookout for new members. We rehearse on Friday nights but are running a special **Open Rehearsal from 3:30 to 5:30 pm on Saturday 8th October in St Mary's**. We will be working on movements from the Requiem by Fauré, which will be sung on Remembrance Sunday in the evening. The plan for the afternoon is rehearsal, tea and cake, short performance. All are welcome. Please bring your own score if you have one, or contact domwallingfordchoir@gmail.com if you would like to borrow one for the afternoon.

Wallingford Wine of the Month – Moulin de Gué Savennières

As we tip into Autumn, the temptation for this column is to dwell on hearty red wines, to enjoy out of the rain and escape the chilly winds. But it's not winter yet, and this time of year brings harvest foods: grains, pork, root vegetables, river fish and squashes. This kind of menu calls for a substantial white wine, and for me one of the most food-friendly wines there is: a Savennières.

Savennières is a small appellation towards the Western end of the winegrowing region of the Loire Valley, opposite the renowned sweet wine regions in Coteaux du Layon. Its circulating air and warmer, dry climate relative to the rest of the Loire give the grapes an extended growing season, time to pack layers of complexity into the final wine. The sandy, schisty soil drains quickly and holds the day's warmth, which makes the growing day longer, and means the grapes can be 'late-harvested': picked slightly shrivelled for a concentrated, more intense juice.

The juice is then fermented at cool temperatures in large old barrels, and left to mature for 11 months. This gives texture and richness to the wine, and a subtle nuttiness as a small amount of oxygen is present as the wine rests in barrel. This slow, gentle winemaking process produces a wine of subtle intensity – no bowlful of tropical fruit, no honeysuckle aromas here. Instead, the flavours mingle and flash like shoals of fish – never too obvious, but beautiful and captivating. The fruit is quince and dried apricot, with a red apple acidity, augmented with hazelnuts and sweet spice. Full-bodied, with a long and clean finish, it's a wine that complements a huge range of dishes, from hearty stews and casseroles, to fresh spicy dishes via seafood and mushroom risotto.

There's lots to love about the winery here – it's a fifth generation, family-owned operation with a genuine dedication to sustainability that goes beyond following the crowd. Despite their growth since the first plantings in 1890, they hold the highest sustainability accreditation in France, and continue to harvest by hand. Savennières can never be a mass-market wine – it's demanding to make and geographically restricted, but the care that goes into its production is evident in every mouthful.

I mentioned that this wine is food friendly, and it has many virtues that make it so. Its acidity cleans the palate and makes the mouth water, its nuttiness acts almost as a seasoning, and the richness of body and subtlety of flavour lifts the experience of food without ever overwhelming it. The wine is an orchestral piece in a film soundtrack, complex and engaging in its own right, but so perfect a complement that you can just sit back and enjoy the harmonious experience. Take it out of the fridge 40 minutes before you drink, and decant if you can, but however you serve it – enjoy!

Michael Jelley is the Director of Grape Minds Wallingford

Wine Name: Moulin de Gué Savennières **Producer:** Domaine des Forges

Grapes: Chenin Blanc **Region:** Loire Valley, France

Exclusive Price: £14.99/bottle until the next issue **Mention WOW in store!**





THE MAKER SPACE

WORKROOM | CAFE | STORE

OPEN 7 DAYS A WEEK
9am – 4pm

Breakfast 9am – 11.30am

Lunch 12pm – 3pm

The Maker Space at The Crown
Gangsdon Hill, Nuffield
Henley-on-Thames, OXON RG9 5SJ
Tel: 01491 642300
www.themakerspace.co.uk



RIBIZLI Cafe

Welcoming Café specialising in healthy Vegetarian & Vegan food

- Speciality Coffee
- Loose Leaf Teas
- Delicious Breakfasts
- Healthy Lunches
- Artisan Bread & Pastries
- Homemade Cakes
- Super Smoothies
- Amazing Ice Creams
- Milkshakes

facebook 5 Star Customer Reviews
Google Reviews 4.8 ★★★★★
tripadvisor

Tuesday to Friday 9:30-3:30
Saturday 9:30-4:00

53 St Mary's Street, Wallingford, OX10 0ER
www.ribizli.co.uk – 07926 870082

WALLINGFORD TEA & COFFEE



We roast High Grown Coffees and we stock Quality Teas together with a range of Herbal beverages and Spices plus a wide variety of Tea and Coffee accessories

Wallingford Tea & Coffee Company Limited
6a St. Martin's Street
Wallingford, Oxon. OX10 0AL
Telephone: 01491 836263
kitchtea@gmail.com

GREAT FOOD, FINE LOCAL ALES AND A WARM WELCOME AWAIT AT THE ROYAL STANDARD PUB, ALONG WITH SKY AND BT SPORTS SO YOU CAN FOLLOW ALL THE LATEST SPORTS ACTION

PROBABLY THE BEST SUNDAY ROAST IN TOWN!

CALL 01491 599105
ROYALSTANDARDWALLINGFORD.CO.UK



ROYAL STANDARD

WALLINGFORD'S ROYAL: ANYTHING BUT STANDARD!

Avanti ITALIAN RESTAURANT

Dining In
Takeaway
Delivery Service

Tuesday to Saturday

Order online
avantiitalian.com
or call 01491835500

COFFEE CULTURE

Where children can play and you can relax



GOOD COFFEE | SOFT PLAY AREA | GREAT FOOD

OPEN TUESDAY TO FRIDAY 9.30AM - 3PM

Royal Standard · 32 St Marys St · Wallingford OX10 0ET



Red Lion

Brightwell cum Sotwell

Corinne & Mouse Welcome you.
Pop in and Say Hello

The Street, Brightwell-cum-Sotwell, Oxfordshire OX10 0RT
01491 837 373
www.redlionbrightwell.co.uk
FB: RedLionBrightwellcumSotwell

Londis

38 Sinodun Road, Wallingford Tel: 01491 837932

- Fruit & Vegetables
- Beers & Wines
- Newspapers
- Magazines
- Mobile Top-up Vouchers

Plus the National Lottery

best value locally

Opening hours:
Mon-Sat. 6.00am-8.00pm
Sunday 6.30am-1.00pm



GRAPE MINDS

Hand-selected wines, spirits and beers



- Free delivery for 6 or more bottles
- Party services (sale or return, free glass hire & more)
- Friendly advice
- Tasting evenings
- Wine open to try

Oxfordshire Business Awards



Retailer of the Year 2022

10 St Martin's Street, OX10 0AL

01491 824549

www.grapemindsdrinkalike.co.uk

Manor Café at Howbery

Open: 9am-4pm, Mon-Fri

MANOR CAFÉ
at
Howbery



- ✓ Hot and cold drinks, homemade cakes: all day
- ✓ Breakfast: 9.00am - 10.30am
- ✓ Paninis, baguettes and baps: 11.00am - 2.00pm
- ✓ Hot and cold lunch options: 11.30am - 1.30pm

Order online or at service counter | Outside and indoor seating areas
Takeaway service | Beautiful grounds | Ample parking

www.howberypark.com



Shellfish Com
Restaurant & Bar

28 High Street
Wallingford

www.shellfishcom.co.uk

01491 832 807

wallingford@shellfishcom.co.uk

Slimming World

taste
the
freedom

Call Nicola
07861 672320



slimmingworld.co.uk

*At participating groups only.
See our website for more information.

Slimming
WORLD

THE COOKHOUSE — DELI — WALLINGFORD

We supply traditional delicatessen styled goods, varying from speciality store cupboard ingredients all the way through to indulgent treats in local cheeses, locally brewed ales and perfect accompaniments to help create the perfect family kitchen.

14 Market Place, Wallingford OX10 0AD



EST. 1995

Mr & Mrs Park's

FAMILY BUTCHERS

High welfare local produce
Knowledgeable and friendly service
A great range of local cheese, wines and much much more.

Check out our website or follow us on Facebook or Instagram to learn more.

5 The Pound, Cholsey, Wallingford, Oxfordshire, OX10 9NS
01491 651300 • info@mrandmrsparks.co.uk • www.mrandmrsparks.co.uk



Welcome!
OPEN MORNING
 8 October



Come and join us!

Whole School Open Morning Saturday, 8th October 9:30am - 12:00pm

Discover all that a Cranford education could offer your child. Welcome!



CRANFORD HOUSE

Excellence in Independent Education
 for Boys and Girls aged 3 - 18
www.cranfordhouse.net

HAVE TROUBLE WITH YOUR TREES?

NEED SOME HELP? ASK THE EXPERTS

- Tree removal
- Tree thinning
- Stump grinding
- Hedge trimming
- Tree pruning
- Tree felling
- Landscaping
- Fencing

We are city & guilds nptc qualified and insured you can feel safe dealing with us.

Call now to see how we can help Free no obligation quote

1st CLASS TREE SURGEONS

E. quote@firstclasstreesurgeons.co.uk

T. 07889 881 525
firstclasstreesurgeons.co.uk

Thinking of selling your artwork?

Mallams 1788

Design & Modern Art Specialist Max Fisher, is available to give free confidential valuations on any piece(s) you are considering selling at auction.

Home Visits also available

Enquiries: 01865 241 358 or max.fisher@mallams.co.uk
www.mallams.co.uk

WEPS

WALLINGFORD ELECTRICAL & PLUMBING SUPPLIES

OPEN TO THE TRADE & PUBLIC

☎ **01491 827825**
 ✉ SALES@WEPS.ORG.UK
UNIT 1 MOSES WINTER WAY

KJ MOBILE HAIR

Katie Dnew
Cutting Technician

Phone/Text 07730400595
 Email: kjmobilehair86@googlemail.com

HAYNES

Car Care Centre
 servicing...batteries...tyres...fantastic value

Bushells Business Park, Lester Way,
 Wallingford Oxon OX10 9DD
www.haynes-car-care.co.uk

- All Makes Servicing and MOT's
- Parts & Accessories
- Air Con Re-Gas
- Courtesy Car
- Batteries & Tyres
- 4 Wheel Laser Tracking

Proud Sponsors of Wallingford Vehicle Rally & BunkFest

01491 836 097