

# WOW



**No Problem  
No Call Out Charge**

**Gutters Cleared**

We remove leaves - moss - grass - growth & debris

**Photos**

Before & After

We do a camera survey first



Conservatories & up to 4 Storeys

Tall buildings, schools, nursing homes and industrial units.

£5million insurance & a Receipt

Peace of mind that we're a proper business.

Timed Appointment

You can track our arrival online

Get an instant price

**01491 815 450**

or book online [gutterpro.co.uk](http://gutterpro.co.uk)

★ ★ ★ ★ ★  
 15,000+ Reviews  
 4.95 Excellent  
 ★ REVIEWS





## C. A. HOLTOM Building Contractor

Established 1988

FOR ALL TYPES OF

Building – Extensions – Plastering – Refurbishment

Alterations – Brickwork – Patios – Drainage

Tel: 01491 651141 / 07990912966

Email: choltom1@sky.com



**Illumin-Nation Ltd**  
5 St Peters Place, St Peters Street  
Wallingford, Oxon OX10 0BG

allan.priddle@btconnect.com  
www.illumin-nationltd.co.uk 01491 833505



**Fireplace Magic**  
**Stoves & Fireplace Sales**

- Solid fuel, gas or electric fires
- Installation
- Chimney sweeping
- Woodburner servicing
- Chimney lining
- HETAS registered

Visit our showroom at  
45 Prospect Street  
Caversham RG4 8JB  
Tel: 0118 9463060

www.fireplacemagic.co.uk



**Masterfloors**  
Contract and Domestic Flooring Specialists

20 St. Martin's Street  
Wallingford  
Oxon. OX10 0AL  
Tel: 01491 833701  
Free estimates

www.masterfloorswallingford.co.uk

**nicf**  
National Institute of Carpet & Nonwovens



**HOMEBASE**  
**PROPERTY**

★ **WHATEVER YOUR PROPERTY NEEDS** ★

**SALES**

**LETTINGS & MANAGEMENT**

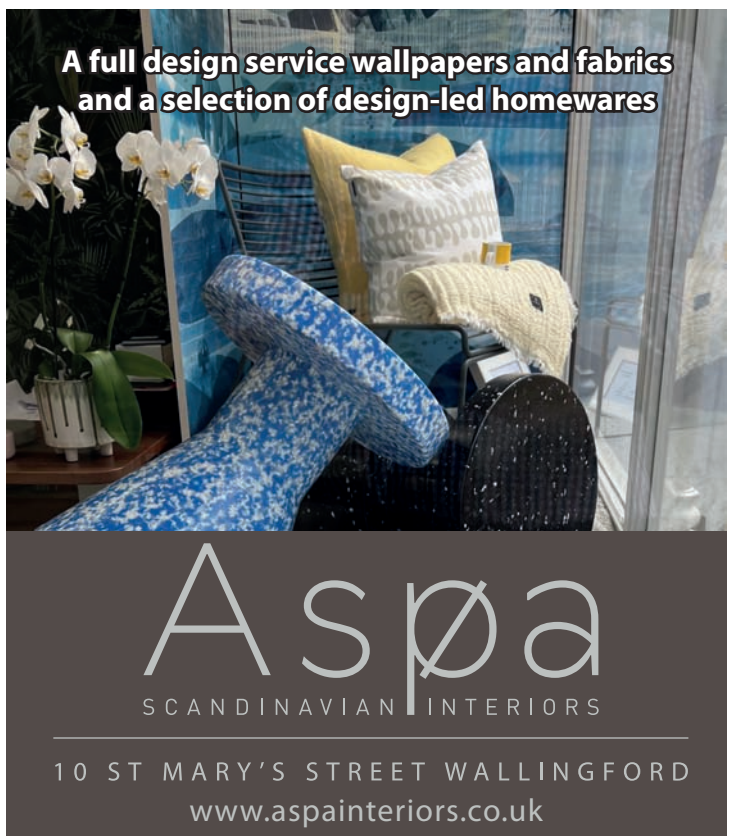
01491 824470 | info@hb-pm.co.uk  
16B St Mary's St, Wallingford, OX10 0EW



**Bathroom Showroom**

**Call Now**  
**01491 377 272**  
35 Wallingford Rd, Goring  
Wallingfordtilesandbathrooms.co.uk

**Wallingford**  
— TILES & BATHROOMS



A full design service wallpapers and fabrics  
and a selection of design-led homewares

**Aspoa**  
SCANDINAVIAN INTERIORS

10 ST MARY'S STREET WALLINGFORD  
www.aspainteriors.co.uk



**WINDOW ON WALLINGFORD**

To advertise in Window on Wallingford please contact us on: [info@windowonwallingford.co.uk](mailto:info@windowonwallingford.co.uk)

**Adverts:**

Must be sent in JPEG or PDF formats in their highest quality.

**Advert sizes:**

- 95 mm x 53 mm
- 95 mm x 110 mm
- 192 mm x 50 mm
- 210 mm x 297 mm
- 210 mm x 148 mm

**Articles:**

Supplied in MS word. Please provide any photos or images including logos separately (jpeg files) that you would like in your article.

**Deadline date to submit: 8th November**

**Editor:** Naomi Reddyhoff

[info@windowonwallingford.co.uk](mailto:info@windowonwallingford.co.uk)

**Marketing, Accounts & Administration:** Jessica Dovey

[jess@windowonwallingford.co.uk](mailto:jess@windowonwallingford.co.uk)

**Distribution:** Naomi Reddyhoff

[info@windowonwallingford.co.uk](mailto:info@windowonwallingford.co.uk)

**Advertising Sales:** Lesley Longden

[lesley@windowonwallingford.co.uk](mailto:lesley@windowonwallingford.co.uk)

**Cover Photo:** Peter Fozard, Wallingford Photographic Club

@windowonwallingford

@window\_on\_wallingford

Whilst every effort is made to ensure the accuracy of information printed in the magazine, the Editor and \Publisher do not accept any responsibility for the consequences of any errors that may occur. Material published in the Window on Wallingford Magazine is copyright, but normally the Editor will be pleased to grant permission for it to be reproduced, if asked on each occasion. The opinions published in this magazine are not necessarily those of the Editor, Publisher or WoW.

Adverts will continue to run unless cancelled.

# Hello Everyone

Already November, this year is marching on. The clocks have gone back an hour and it's turning cold and dark. Remember to wear something bright so you can be seen when walking at night.

Remembrance Sunday is on the 13th of November. The Market Place will be closed to traffic for a while, see page 6 for details.

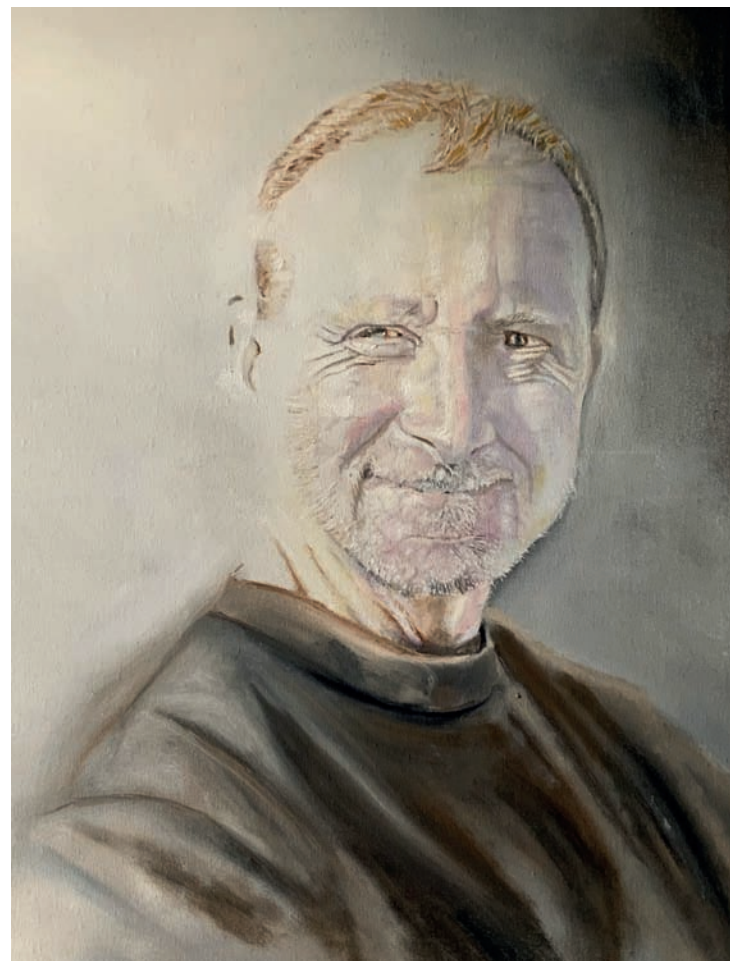
Lesley ate at the Maker Spacer at the Crown; you can read her revue in the "Dining Out" section along with a "WoW Readers Special Offer" on wine from Grape Minds. Fabulous.

A big thank you to all our volunteer deliverers, new and seasoned, without you we couldn't get the magazine out. Thank you.

We are still looking for a couple of distributor volunteers. This involves counting the magazines out and dropping them off to the deliverers. Just a couple of hours a month, we desperately need you.

There are bound to be fireworks going off this month, so take care of your pets, it's just not nice for them.

Have a great November, have fun, stay safe.  
Naomi X



**Sunshine Painting & Decorating**

**LANCE THOMPSON**  
FRIENDLY RELIABLE SERVICE

For All Your Decorating Needs  
Call For A Free Estimate.  
**07780 221950**

[lance.sunshine@btpopenworld.com](mailto:lance.sunshine@btpopenworld.com)    [www.sunshinedecorating.co.uk](http://www.sunshinedecorating.co.uk)

@sunshinedecorator    @sunshine\_pd

FULLY INSURED | CHOLSEY, OXON



 **Skip Hire  
Caged Tipper  
Waste Management**

☎ 01235 760555

✉ info@asvogel.co.uk  www.asvogel.co.uk

[ Mention Window on Wallingford when you call ]

 Electrical  
Plumbing  
Fire and Security

 DOMESTIC INSTALLER  
 REGISTERED

**Call: 01491 835875**  
Email - reception@groupga.co.uk  
Unit H Moses Winter Way, Wallingford, OX10 9FE

**THE POSITIVE  
OUTCOMES GROUP**

**Wallingford Methodist Church**  
St Leonard's Square, OX10 8AS

**Sunday Worship 10.30 am  
EVERYONE WELCOME**

The resumption of other activities is planned  
Please check the notice boards outside the church for details  
or the website [www.wallingfordmethodistchurch.org.uk](http://www.wallingfordmethodistchurch.org.uk)  
Contact our minister, Rev. Jocelyn Bennett, with any enquiries.

Tel 01235 813242 email [jocelynbennett@methodist.org.uk](mailto:jocelynbennett@methodist.org.uk)

 **WATER'S EDGE**  
PLUMBING & HEATING

**Plumbing and Heating Services**

Based in Crowmarsh, fully qualified and insured.  
Contact our friendly office team for a quick response  
to your requirements or to arrange your **FREE QUOTE**

**01491 821 626**

[www.watersedgeuk.co.uk](http://www.watersedgeuk.co.uk) | [contactus@watersedgeuk.co.uk](mailto:contactus@watersedgeuk.co.uk)

- General Plumbing
- Leak Repair
- Central Heating
- Boiler Repairs
- Boiler Installations
- Shower Installations
- Powerflushing
- Gas Safety Services
- Underfloor Heating
- Estate Agent Services

Proud members of  **Checkatrade.com**   
Where reputation matters

 **CARE DRY CLEANERS**

10B St. Martins Street, Wallingford OX10 0AL  
Tel: 01491 837318

- Suede Leather • Alterations • Press Services • Wedding Dresses •
- Settee Covers • Rugs • Laundry • Duvets • Curtains

  
Wallingford Town Council

**TO THE RESIDENTS OF WALLINGFORD**

**With the object of keeping the Market Place as quiet as possible during the customary  
Remembrance Service**

**On Sunday 13th November, 2022**  
**the Market Place will be closed to traffic from approximately 1000 hours to 1200 hours.**

The co-operation of residents living in the vicinity of the Market Place is sought to ensure that there is no  
interference during the service.

**All Are Welcome**

Parade leaves Goldsmith Lane Car Park approx. 10.50am, Bugler sounds Last Post approx. 10.58am, Silence  
at 11am, Service finishes approx. 11.30am. For further details visit [www.wallingford.co.uk](http://www.wallingford.co.uk)

8A Castle Street  
Wallingford, OX10 8DL  
Telephone: 01491 835373

Michelle Taylor,  
The Town Clerk/RFO



# Autumn's in the air at Benson House



Scan to find  
out more

## Book an Autumn Stay at Benson House Care Home

Our all-inclusive short stays offer something for everyone and can be pre-booked to suit you. Enjoy time outside to experience the change in seasonal colours with a hot chocolate and new friends. Whether you need a short break or a longer period of care, we take time to get to know you and your individual needs, giving you the added reassurance of discreet help when you need it.



Freephone

0808 223 5401

Online

[caringhomes.org](https://www.caringhomes.org)

Churchfield Lane, Benson, Wallingford, Oxfordshire OX10 6SH

Benson House



CARING HOMES



# UNITED CHARITIES BAZAAR

I am delighted to confirm that Father Christmas will be back again for the Christmas season in Wallingford at the **Charities Bazaar on the 26th November 2022**. It will be open from **10am to 1pm**. We will be in **St Mary's Church** in the town centre, which is easily accessible by everyone.

We are very pleased and grateful that the lovely people at St Mary's are letting us use the Church again. There will be lots of Charitable organisations from around town setting up their stalls and selling all sorts of Christmas goodies.

The Mayor, or their deputy, hopefully will be able to attend to open the bazaar at 10am, and then you can start shopping at all the different stalls. The stall holders attend the Bazaar at no cost to the charities involved, thanks to the generosity of St Mary's Church and the volunteers.

If any organisation in the Wallingford area would like to be involved but hasn't yet been in touch, please email me at **bernardthorington@gmail.com** and the forms will be sent out to you.

**Looking forward to seeing you on the 26th November 2022!**



## The Town Information Centre

The summer season is well past us now and the altering of our clocks is bringing forth our winter months. Hopefully there will be still be some warm sunny days and we can continue to venture out and explore the changing beauty of our local areas.



WALLINGFORD

A historic market town on the banks of the River Thames

We have lots of suggestions and maps for some pleasant walks in and around Wallingford so why not pop in and chat to us.

We have also some new ideas for gifts all produced by local artists and authors. Christmas is just around the corner.

Please do remember that the Town Information Centre have a Lost and Found box. Items are often handed into us so if you have lost something come and see if we have it.

**A reminder too that our hours will change for the winter and as from 5th December until the beginning of March we will be open from 09.30 until 13.30 Monday to Saturday.**

## Warm Home Discount rules updated for 2022-23

As winter approaches, many people will be nervously anticipating the cold weather and its inevitable effect on their heating bills. The Warm Home Discount (WHD) was introduced by the government in 2011 to offset some of this burden.

citizens  
advice

For 2022-2023 there have been a couple of significant changes to the WHD: the number of energy suppliers participating in the scheme will increase, and those on disability benefits who don't have low incomes nor high energy costs will not receive the WHD.

The value of the WHD payment is currently £150. Nobody needs to apply in order to receive it, with the exception of those living in mobile homes on a park home site (see below). The payment is credited automatically to the consumer's electricity supply account (or credit is directly applied to a pre-payment meter), and energy suppliers have to make this payment by 31 March each year at the latest.

Eligibility for the WHD is ascertained by means of data-matching between energy suppliers and government departments. There are three eligible groups of consumers: low-income pensioner households; low-income people on some means-tested benefits; and households with high energy costs. This last criterium is determined by the type of property you live in, especially its age and its floor area (based on information supplied by the Valuation Office Agency or the Land Registry).

There is an alternative form of WHD for those living in mobile homes on park home sites. For more information about this, visit [www.gov.uk](http://www.gov.uk) and search for "Warm Home Discount". Also see the information under "Check if you'll get the Warm Home Discount in 2022" on <https://www.citizensadvice.org.uk>. The Citizens Advice consumer helpline is **0808 223 1133** and our Adviceline is **0808 278 7907** if you have other concerns about energy costs.



# WHAT'S ON!

## CHOLSEY REPAIR CAFÉ

The last Cholsey Repair Café of 2022 will be held at the **Cholsey Pavilion, Station Road, Cholsey, on Saturday 19th November, from 11.00 to 13.45**. All manner of broken household items can be considered, except large appliances. The café's sharpening service has been very popular and recent repairs have included clothing, clocks, hairdryers, lamps, vacuum cleaners, bicycles and much more. Volunteers ask only for a donation towards running costs, plus any spare parts required. See [www.cholseyrepaircafe.com](http://www.cholseyrepaircafe.com) for more information or email [repaircafe@cholsey.com](mailto:repaircafe@cholsey.com)

## BENSON GARDEN CLUB

Our next talk on **3rd November** will be given by a very experienced and well-known gardener. With over 40 years' experience in retail and production horticulture, **Andy McIndoe** is an author and regular contributor to a number of magazines, blogs and BBC Radio. Andy has also been awarded the prestigious Veitch Memorial Medal (one of the highest accolades in the world of horticulture) by the Royal Horticultural Society in recognition of his outstanding contribution to the science and practice of horticulture. Andy's talk, "**The Winter Garden**", will cover foliage, flowers, stems and bark that come into their own during winter. As usual, our venue will be **Benson parish hall - doors open at 7.15pm for 7.45pm start** (£2 for members, £5 for visitors – just turn up on the door, no need to book). We will also have our "Flower of the Month" competition (for members only).

Further information about this thriving club, which has been running for over 25 years, and how to join as a member can be found on our website <https://bensongardeningclub.weebly.com> or please feel free to email [bensongardeningclub@gmail.com](mailto:bensongardeningclub@gmail.com)

Liz Harrison

## HENLEY AND DISTRICT STAMP CLUB

Sorry to tell you that Christmas will quickly be here and as the days get shorter and the nights longer, have you thought of starting a hobby? As a younger person most had a childhood collection of Stamps, why not take this on as an adult and visit us at Bix one Wednesday evening.

You can then join others that enjoy the hobby, meet with like-minded people. CROSS KEYS - Wallingford

### Meetings in November

**Wednesday 9th November – The Franking System of Great Britain' by Guest speaker Bob Garland.**

**Wednesday 23rd November - A display of 'Aspect of Gibraltar' by guest speaker Eric Holmes.**

**Meetings are held the 2nd and 4th Wednesday of the month at Bix Village Hall at 7.30 p.m.**

Visitors and new members are welcome. Further details can be obtained by phoning Brian on **01491 681739** or on our website: - [www.henleyphilatelic.org.uk](http://www.henleyphilatelic.org.uk)

## WALLINGFORD ALLOTMENTS AND GARDENS SOCIETY (WAGS)

The WAGS store is open until the end of October for all your gardening and allotment needs. The RHS says this is the best time of year to plant, while the soil is still warm and wet. We also have weed suppressant fabric if you are putting your veg beds to sleep for Winter and want them warm, weed free and ready for planting in Spring. Members get 30% off seeds from Dobies this Autumn, so it's worth joining even at this time of year, with the annual membership only £4. **The WAGS Store is located at Centre 70, open every Saturday Sept-Oct and Feb-July 11am-12noon.**

We are here for all our growers and gardeners from the local community. Thank you to all that took part, supported or attended the Autumn Show back in September, it was a great day with lots of prizes and trophies awarded to our top exhibitors.

## WALLINGFORD & DISTRICT ART CLUB

Fancy watching a watercolour demonstration from a superb professional artist from the comfort of your own sofa? Join us for an online demo via **Zoom at 7.30pm on Tuesday, November 15th** when Wallingford & District art club will welcome **Brian Smith** as he creates an '**Urban Scene in Watercolour**'. Brian brings light and life into his beautifully atmospheric watercolour paintings.

If you would like to join us for the evening's demo please contact [admin@wallingfordartclub.org.uk](mailto:admin@wallingfordartclub.org.uk) Information on all club activities and how to become a full member is available at our website [www.wallingfordartclub.org.uk](http://www.wallingfordartclub.org.uk)

## WALLINGFORD METHODIST CHURCH

Charity Christmas cards, festive decorations and coffee will be on offer at Wallingford Methodist Church on **Saturday November 5th**. The festive coffee morning, in aid of Save the Children and the church, takes place between **10 and noon**. Freshly cooked lunches will be served on **Tuesday November 1st at Wallingford Methodist Church**. All are welcome and there's no need to book. The reasonably priced meal is served at 12.30 pm. Afternoon tea, with sandwiches, cakes and plenty of tea, will be served between 3-4.30 pm on November 15th. Book your place now to learn how to make your own festive door wreath for £15 in early December. Everything will be provided, including a festive drink and snack, on the afternoon of **Saturday 3rd** at Wallingford Methodist Church. To book a place please contact [wmladership@outlook.com](mailto:wmladership@outlook.com) or ring **07818 660861**.

## WALLINGFORD PHOTOGRAPHIC CLUB

**Wallingford Photographic Club** is now back at **Crowmarsh Pavilion** for the season. Our inclusive club allows people of all ages and levels of experience to learn how to improve their photography through conversations with other members, presentations by visiting speakers, practical evenings and competitions. The club meets every **Thursday at 7.30pm for an 8pm start** (7.45 start on competition evenings!) and we'll have a few Zoom-only sessions during winter months. In November we have our first competition- with a 'no set subject' contest, members submit their best work for feedback and a judge's rating. There are print and digital images categories at the session in the Pavilion and it makes for a fun and interesting evening. Then we head online (only) on 10th for award-winning Tracey Lund's talk on wildlife photography from around the world. On 17th we're online again for our much-anticipated talk from Jane Goodall on "The Beautiful Light". We end the month (on 24th) with our second competition which again is open, with no particular theme or topic.

## WALLINGFORD THEATRE CLUB

Wallingford Theatre Club (WTC) is looking to recruit new members. Do you enjoy theatre? Would you like to enjoy going to the theatre without the hassle of driving and parking? Would you like the company of other theatre-goers with whom you can share your enjoyment (or otherwise!) of the show? Then the Theatre Club may be just what you are looking for. Having ceased all activities during lock-down, when all theatres were closed, the Theatre Club is fully up and running again. Recent visits have been to theatres in Richmond, Winchester and Aylesbury to see such shows as HMS Pinafore, The False Servant, Boeing – Boeing, Best Exotic Marigold Hotel and Blood Brothers - an eclectic mix to suit a variety of tastes. We avoid West End theatres and choose local theatres which are up to a couple of hours drive away. They are usually in locations where there is an excellent choice of restaurants and cafes for lunch – Richmond and Winchester being prime examples. Our trips are made in a luxury coach and leave Wallingford and Didcot mid-morning, arriving at the venue in time for lunch before the performance. We leave for home shortly after the performance ends, getting back to Wallingford or Didcot early in the evening. Altogether an enjoyable day out. Because we are able to get discounts for group bookings ticket prices are reasonable so the current cost to members of the theatre ticket and the coach trip combined is around £60 per person. The Wallingford Theatre Club has members from the whole Wallingford area including Didcot. If you are interested in learning more about the Theatre Club – or know enough already to want to join, please contact the Membership Secretary Marion Rae, **Telephone 01491- 824422**. or by email [davidandmarion@274industries.com](mailto:davidandmarion@274industries.com). We are looking forward to hearing from you. To quote the immortal bard "the play's the thing"!



## Winterbrook Garden Services Ltd

Garden Design, Construction & Maintenance

Fencing  
Patos

Full Pruning Service

Tel: 01491 838189

Mobile: 0775 36 36 333

winterbrookgs@gmail.com



## Winterbrook Garden Nurseries

High Road, Brightwell-cum-Sotwell,  
OX10 0PS

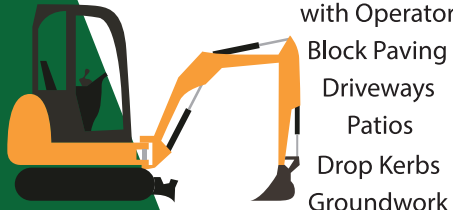
Independent plant nursery  
specialising in herbaceous  
perennials  
& garden curios

www.winterbrookgardennurseries.com

@winterbrookgardennurseries

## G.R. Galliford

Graham  
07762 650 809  
01491 824583



Mini Digger  
with Operator  
Block Paving  
Driveways  
Patos  
Drop Kerbs  
Groundwork

g.galliford@btinternet.com

## Benson Angling Centre

Your Friendly Local Angling Centre

Unit 3, Benson Waterfront,  
Benson Wallingford OX10 6SJ

Tel: 01491 838288

Email: dibby1949@yahoo.co.uk



Stockists of Drennan E.S.P. Dynamite Baits, Sticky Baits, Baitech, Dead Baits and Live Baits Available. We buy and sell all used angling items

**SHOE  
REPAIRS**

**ENGRAVING**

**KEY  
CUTTING**



## FEET FIRST



21 St. Mary's Street, Wallingford  
Contact Gary on: 01491 825224

**WATCHSTRAPS  
BATTERIES**

**STITCHING  
REPAIRS**

**TRAVEL GOODS  
LUGGAGE**

## A.G.CURTAIN DESIGN LTD

www.agcurtaindesign.com



BEAUTIFUL  
CURTAINS, BLINDS  
&  
SOFT FURNISHINGS  
01491 834238



Made Exclusively For Your Home  
Bespoke Curtains & Soft Furnishings

Blinds & Shutters  
Modern & Contemporary

- 15 years serving clients in South Oxfordshire
- 1,000's of design lead fabrics to choose from
- Expert making and fitting service
- Curtains & Soft Furnishings
- Poles - tracks - finials & tie backs
- Cushions - lamp shades & headboards
- Made to order promptly & efficiently
- Free measure & quotation service

- Wooden & Venetian
- Roller & Vertical
- Perfect fit & Faux Wood
- Made to fit your windows
- Inside & Outside recess fit
- Manual & Remote controls
- For all rooms in your home or business

VISIT OUR RETAIL STORE AT 3 ST, PETERS PLACE, WALLINGFORD, OXON. OX10 0BG



## Wallingford Tyres & Exhausts



**FRIENDLY, PROFESSIONAL SERVICE  
AT COMPETITIVE RATES**

PHONE: (01491) 824145 FOR A QUOTE

or call in at: AYRES YARD, STATION ROAD,  
WALLINGFORD, OXON.

OR BY APPOINTMENT OUTSIDE WORKING HOURS

Mon.-Fri. 8.30 a.m.-5.30 p.m. Sat. 8.30 a.m.-1.00 p.m.

(Just past the Esso Garage on the way to Didcot)



INSPIRATION CREATION TUITION

1 Ayres Yard, Station Road, Wallingford, Oxon OX10 0JZ

T: 01491 838005 E: kerif@wallingfordflowers.co.uk

www.wallingfordflowers.co.uk

## HOWARD CHADWICK FUNERAL SERVICE

A caring family owned and managed Funeral Service

- Dedicated Private Chapel of Rest •
- Golden Charter Pre-Paid Funeral Plans •
- Specialists in Memorial Stones and Designs •

33 Benson Lane, Crowmarsh Gifford,  
Wallingford OX10 8ED

Tel: 01491 825222

www.chadwicksfuneralservice.co.uk



Golden Charter  
Funeral Plans

# Advent & Christmas in St Mary's, Wallingford

As the nights draw in, we turn our attention to Advent & Christmas!

There will be plenty happening in **St Mary's Church Wallingford** during this period, starting with our candlelight service on the **28th November at 6:30 pm**.

We will also be open during the **Christmas Town Event on 4th December** for refreshments and children's activities.

And there's lots more to follow in the December's edition of WoW! All are welcome.

## So please JOIN US THIS CHRISTMAS



## Fauré Requiem on Remembrance Sunday

Wallingford Parish Church Choir directed by Judith Ward will be singing Fauré's moving setting of the Requiem on **Sunday 13 November in St Mary's Church, Wallingford at 6.30pm**.

It's such a fitting moment to perform a work of this kind, and it has proved popular in previous years.

All are welcome – entry is free - there will be a retiring charity collection, cards or cash accepted.



**St Mary's & St Leonard's  
Wallingford**

*open to God, open to all*

## Mozart Double Bill from Benson Choral Society

As they search for a new Musical Director, Benson Choral Society are in top form this autumn benefiting from an array of guest conductors each week at their rehearsals. One of the most experienced and respected of these is Nicholas Cleobury who will in charge at their next concert at **7.30 pm on Saturday 12 November in Dorchester Abbey**. It's a double bill of Mozart – his masterly and haunting Requiem coupled with the Solemn Vespers, which includes the famous Laudate Dominum - its soprano melody is among the most magical of all Mozart's vocal writing. Nicholas leads the choir with a quartet of fine soloists and the West Forest Sinfonia. Tickets are £18 (reserved) and £15 (unreserved). Early booking recommended through [www.bensonchoralsociety.org.uk](http://www.bensonchoralsociety.org.uk) or phone Stephanie evenings on **01865 407395**.

## The Young at Heart Club

**Age UK Oxfordshire run the Young at Heart club at the Masonic Hall, Goldsmith's Lane, Wallingford OX10 0DU.**

We meet up on the **second Tuesday of every month, 2.00-4.00pm**. Please come along to the club for a couple of hours of tea, coffee, biscuits and a chat, a speaker or entertainment and a game or two of Bingo. The cost is £3.50, pay on the door. The club is open to anyone over the age of 50 and we would welcome new members! Any questions please ring Rachel Poole, **07827 235460**.

## A Very Merry Christmas awaits Meadows Market Shoppers

Stallholder team promises spectacular Christmassy event!

A colourful seasonal event is promised for the next **Meadows Morning Market on Saturday 26th November** - definitely a date for shoppers' diaries. The Great Hall in Cholsey Meadows will be packed with more stallholders than ever before offering customers the widest range of products imaginable.

Co-founder of the increasingly popular Meadows Morning Market, Becky Kite comments: *"Our aim is to help our customers get off to a great start with their Christmas shopping, so we have increased the number of stalls on show and the product range. We will have not only a large variety of seasonal foods and stationery products but also gifts – beauty products, jewellery, handbags, books, ladies and children's clothing - ideal for small or large budgets. Really something for everyone! We pride ourselves on the community atmosphere generated by our great team of stallholders. They are simply brilliant and are just raring to go."*



The Meadows Morning Market community of stallholders after another successful event.

The Christmas atmosphere will be complemented by festive music and children's entertainment including Santa's Elf and a Face Painter, as well as delicious seasonal delights offered by The Little Artichoke who run the Café.

Ms Kite concluded: *"Saturday 26th November is not far away. The Market runs from 9.00am to 1.00pm but I suggest shoppers get to The Great Hall promptly to make the most of the best buys. We expect some products will fly off the stalls. We hope to have a very busy market indeed."*

For all enquiries contact: **John Jenkins MBE. [John.jenkins999@btinternet.com](mailto:John.jenkins999@btinternet.com)**



Since writing the previous news it seems that a great deal has happened. It was not only the passing of our much-loved Queen that made September a sombre month, but also we lost one of our founding members, Audrey Maple. She was our secretary from 1998 to 2017 and we remember her with affection and gratitude.

Our holiday in south west Ireland was a great success and participants enjoyed the beautiful scenery of the lovely Kerry area. Our trip to Coventry Cathedral was fascinating as was the tour of the medieval Guildhall (or the transport museum for petrolheads!). We are looking forward to our talk on the **Wind in the Willows on 16th November** and an outing to **Tring History Museum on 24th November**. Also in November the Thames Valley Network have arranged a **Zoom talk by Judy Dewey on "The Civil war in Wallingford and Chalgrove"**

Prospective new members are welcome at our informal coffee mornings which, as a trial for November and December, will be held in the Methodist Hall, Wallingford on the first Friday of the month from 10.30 am to noon. Our monthly speaker meetings are held in St. Mary's Church on the third Wednesday at 2pm. More information is on our website [www.wallingfordu3a.org](http://www.wallingfordu3a.org) where you can find an enquiry form.

Neil Kelly, Thameside (Wallingford) u3a

## Scout Post 2022



We will be again running a local Christmas post delivery service starting in December.

More details will follow in the December issue of WOW magazine.

Please use this service as it is a great boost to supporting the local scout groups.

We look forward to delivering all your local cards.

Terry Field



## Scrabble Club

**EVERY MONDAY AT 7.30 PM**  
CROSS KEYS - Wallingford

Parking available – free scrabble club

Come and have a fun evening at our friendly club

**Phone Lynn 07989270605 for more info**  
– or just turn up

## Sue Ryder Lights of Love Thames Valley

**Sue Ryder is inviting people to remember and reflect upon special memories of loved ones at its Sue Ryder Lights of Love Thames Valley event this December.**



The winter remembrance event, held at the **English Martyrs Church, Reading**, on the evening of **Thursday 8th December**, will see people come together alongside others in their community who are also living with loss to give thanks and collectively celebrate the lives of people who have died.

It will feature readings, songs and live music performances and guests are invited to make a dedication in memory of someone special, which will be displayed at the event.

Sue Ryder Lights of Love Thames Valley is free to attend and is open to anyone who wishes to commemorate a loved one, regardless of when they died or if they were a former patient of Sue Ryder.

Limited spaces are available. For more information or to register to attend visit [sueryder.org/lightsthamesvalley](http://sueryder.org/lightsthamesvalley) or contact the Sue Ryder Thames Valley Fundraising Team via email [thamesvalley.fundraising@sueryder.org](mailto:thamesvalley.fundraising@sueryder.org) or call 0118 9550 433.

For those that are unable to attend the event in person, there is also an online dedication wall available at [sueryder.dedicationpage.org/lightsoflove2022](http://sueryder.dedicationpage.org/lightsoflove2022)

## December Daily Dash

Walk, jog, run or roll 5k every day this December and raise vital funds for Sue Ryder. Do it your own way. On your own or in a group. Fast or slow. Morning, noon or night. However you do the December Daily Dash, when you go the distance, you make the difference.

December can be a busy month. Take some time for yourself every day, whilst also helping Sue Ryder to continue to be there for people when it matters most. It is free to take part, but it's your donations and fundraising that will make all the difference to patients and families needing Sue Ryder's specialist palliative, neurological and bereavement support. So make December yours. Sign up now at [decemberdailydash.com](http://decemberdailydash.com) or email [december.dailydash@sueryder.org](mailto:december.dailydash@sueryder.org).

# FAMILY PAGE

## Juniors at Wallingford Rowing Club

The juniors at Wallingford Rowing Club have been growing! Not just in size, as you'd expect from teenagers, but also in number, success and enjoyment. This year saw gold, silver and bronze medals at all the major championships in early summer, followed by about 20 wins during a hectic programme of fun regattas over late summer. On the back of this we now have 93 junior members led in training by our very own Katie Greves, silver medallist at the Rio Olympics. It's very much a place to make friends, discover your potential, and do and achieve things you may not have thought possible, on the loveliest and longest uninterrupted stretch of the Upper Thames. We encourage all the juniors to participate, and even lead, club activities.



Recently Emma and Rosie organised an afternoon of racing and pizza for 120 people, getting all the parents to the club to watch, scheduling races, organising boats, equipment and marshals. And 50 pizzas! Pretty impressive for two 16 year-olds. All juniors recently volunteered at our Long Distance Sculls, helping 450 crews get boated, directing people, and ensuring the event went smoothly. They have also participated in our Club Day, thoroughly cleaning and clearing the gym and preparing boats for the winter months ahead.



There is lots of racing to come before Christmas too - Reading Small Boats Head, Henley Sculls, Wycliffe and Hampton Small Boats Heads and of course Wallingford 4s and 8s Head on Sunday 27th November. If you want to come and see us in action, please come and cheer from the towpath between the club and the new bridge.

If you have a child aged 12 or 13 who is interested in taking up the sport, email the Captain at [wrccaptain@hotmail.co.uk](mailto:wrccaptain@hotmail.co.uk) We will be arranging Learn To Row courses next summer for next year's intake. We'd love you to be part of our fun and our success!

## 2nd Wallingford Scouts

**Every week the Scout Association gives around half a million young people the skills they might need for school, college, university or a tricky challenge: the skills they need for life.**

At 2nd Wallingford we cater for three groups. We currently have one Beaver colony, two cub packs and two Scout troops all meeting in our HQ located beneath the water tower on various evenings. All are welcome at 2nd Wallingford Scouts regardless of gender, race, background or ability.

We offer a full range of activities, indoors and out, whether at the hut with our own leaders or externally with instructors for young people between 6 and 14 years old. Using these activities the young people work towards their Chief Scouts award.

Of course we also go camping, hiking and paddle boarding, but we also get to hang out with friends, in a safe environment, with "Fun" being main theme.

**We can't give these young people these opportunities without volunteer and or guardian/parent help. We are always on the lookout for adults to join in somehow and it doesn't matter how little or much.**

**So if you are interested then please do contact us [info@2ndwallingfordscouts.org.uk](mailto:info@2ndwallingfordscouts.org.uk)**

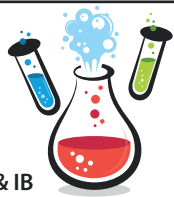


Skip



## CHEMISTRY TUITION - JASMINA HARRISON

Chemistry tutoring by a highly experienced former Head of Department at a local independent secondary school



Tuition at secondary level including GCSE, A level & IB  
Offering personalised tuition at my home in Dorchester or can visit students in Dorchester, Benson, Wallingford and Goring areas.  
**In person and online.**  
Skilled in building confident students at all levels of Chemistry, enabling them to achieve their potential.

07753816716 • [jasmina@rwhconsulting.uk](mailto:jasmina@rwhconsulting.uk)

## Tom Cottrell Landscapes

EST 1974 Family Run Business

Telephone: 01491 836974

### All tree aspects - Dave Cottrell

- Felling • Reducing • Reshaping
- Thinning, Removal • Pollarding
- Shrub & Tree Pruning • Dead Wood
- Removal Hedge Management
- Stump Grinding

### Garden & Landscaping Services

- Turfing • Hedge & Grass Cutting
- Planting • Fencing • Patios
- General Garden Maintenance
- Garden Renovation & Construction
- Woodchip Mulch
- Seasoned Logs & Kindling Wood

[www.tomcottrelllandscapes.com](http://www.tomcottrelllandscapes.com)

Email: [tomcottrelllandscapes@gmail.com](mailto:tomcottrelllandscapes@gmail.com)

Orchard Cottage, High Road, Brightwell-cum-Sotwell, Nr Wallingford, Oxon OX10 0PS

## HANDYMAN

SERVICES IN WALLINGFORD

- ✓ Bricklaying
- ✓ Repointing
- Pavements
- House maintenance
- ✓ Plastering
- Painting
- Tiles



**NEED ANY HELP AT HOME?**

CALL 074 66115536

## WALLINGFORD RADIO

For the community of South Oxfordshire

# 107.3FM

Turn on, tune in

Listen online at

<https://wallingfordradio.co.uk>

## Paddocks Pre-School

Paddocks Pre-school  
Paddock Road  
Wallingford  
OX10 9LT  
[www.paddockspreschool.com](http://www.paddockspreschool.com)

**A friendly preschool environment offering a wide range:**

- Flexible sessions for 2 – 5 year olds
- Universal 15 hours funding for 2, 3 & 4 year olds
- Extended 30 hours funding for 3 & 4 year olds
- Large Garden & Forest School
- After school care available
- Holiday play schemes for 2-8 year olds



For more information or to arrange a visit, please call **01491 825333** Charity Number: 1001964  
or email [info@paddockspreschool.com](mailto:info@paddockspreschool.com)

## LOVE HAIR? LOVE FASHION? BE A HAIRDRESSER

**Apprenticeships available now!**



Call Forresters: **01491 837 523**

Drop in: **25 High Street, Wallingford**

[Forresters4hair.com](http://Forresters4hair.com)



Apprenticeships

## JIM PINK

Service Centre and Car Sales  
15 Wood Street, Wallingford OX10 0AY



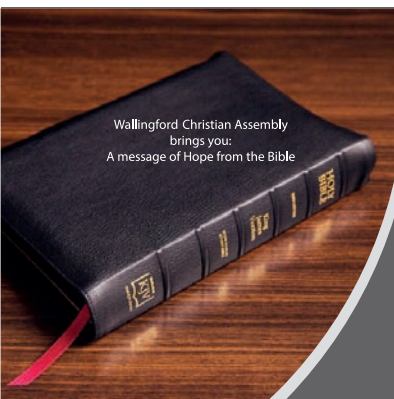
**HYBRID/ELECTRIC SPECIALISTS**

- Free Battery Check
- Free Light Check
- Free Antifreeze Check
- Annual Service
- Batteries from £49.95 + VAT Fitted Free
- MOT testing
- 4 Wheel Laser Tracking
- Air Con Servicing (Inc.R1 234YF type)
- **Air Conditioning Regas from £69 inc VAT**
- Diagnostics
- Tyres fitted at very competitive prices
- **We now have a fully qualified technician to work on Hybrid/Electric Cars**

**FREE COLLECTION or we can provide a COURTESY CAR**

Call **01491 836 • 017 01491 836 022 • 07342 630396**

email [info@jimpink.co.uk](mailto:info@jimpink.co.uk) [www.jimpink.co.uk](http://www.jimpink.co.uk)



Wallingford Christian Assembly  
brings you:  
A message of Hope from the Bible

Faith cometh by hearing and hearing by the Word of God (Romans 10:17, the Bible)

Join us online  
Every Sunday @ 17:00  
20 min message



We invite you to hear a short message from the Bible, available from the comfort of your own home.

To watch live:  
Zoom ID: 491 229 776  
Passcode: 316

Not able to join on a Sunday – [catch up on demand:](#)

@Wallingford Christian Assembly

@GodsGoodNews (God's Good News for South Oxfordshire)

Wallingford Christian Assembly  
[www.wallingfordchristianassembly.org.uk](http://www.wallingfordchristianassembly.org.uk)

customer care without compromise

## CHEQUERS GARAGE



Fullers Road, Aston Tirrold,  
Oxfordshire OX11 9EN

[info@chequers-garagedidcot.co.uk](mailto:info@chequers-garagedidcot.co.uk)  
[www.chequers-garagedidcot.co.uk](http://www.chequers-garagedidcot.co.uk)

At Chequers Garage we look after our customers as well as their cars. That's why we have courtesy cars, offer local collection and delivery, explain your invoice in plain English and every car is washed before it is returned - not only will your car run well, it will look great too!

**MOT**

**SERVICE**

**TYRES**

**AIR CON**



the Good Garage Scheme

**Call today on 01235 850347**





# WHAT'S ON

AT THE CORN EXCHANGE, WALLINGFORD



## CINEMA

All regular performances normally start at 7:30pm unless stated otherwise. Please note that we will start on time and that latecomers will only be allowed in after the start of the film where there is no disruption to sitting patrons. This means that we may have to reseat some latecomers. For Live Screenings we reserve the right to seat latecomers in the Curtis Room where there is a large screen relay. The bar and auditorium will open from 7pm so there's plenty of time to collect drinks beforehand.

**Due to significant increases in our energy costs, the Corn Exchange is having to raise the cinema price for Adults to £10 for all showings as from 1st October 2022. Under 15 prices will remain at £5. Prices for live screenings will also rise to £18 (adults), £15 (over 60s) £10 (under 18s) for showings from that date**

We will be bringing back matinee performances in October, initially on Wednesday and Saturday afternoons at 2:30pm. Please look at the website for updates. This is being done for an interim period but will continue if there is sufficient demand.

**Tickets £10 for Adults and £5 for under 15s unless otherwise stated.**

Tues 1 Nov 7.30pm  
Wed, 1 Nov 7.30pm  
Fri 4 Nov 7.30pm  
Sun 6 Nov 7.30pm  
Mon 7 Nov 7.30pm  
Tue 8 Nov 7.30pm  
Wed 9 Nov 7.30pm  
Thu 10 Nov 7.30pm  
Fri 11 Nov 7.30pm  
Sat 12 Nov 7.30pm  
Sun 13 Nov 7.30pm  
Fri 25 Nov 7.30pm  
Sun 27 Nov 7.30pm

Nothing Compares  
Nothing Compares  
Amsterdam  
Amsterdam  
Amsterdam  
Doctor Who Am I  
My Neighbour Adolf  
My Neighbour Adolf  
The Banshees of Inisherin  
The Banshees of Inisherin  
The Banshees of Inisherin  
Living  
Living

## PRESS RELEASE FROM CHOLSEY & WALLINGFORD RAILWAY

CHOLSEY & WALLINGFORD

HERITAGE RAILWAY

It is with great pleasure that the Cholsey & Wallingford Railway announce that Board member Michael Palfrey has been appointed in the role of Chair of the Cholsey & Wallingford Railway Preservation Society following the retirement of previous Chair, Tony Stead, who stood down from the Board at the AGM held on the 17th September. In his final report Tony said that he "...always felt that being Chair should only be for no more than three years, we need new ideas and new enthusiastic people to drive new projects. I hope my successor gets as much enjoyment from the role as I have".

Michael Palfrey first became a member of the Preservation Society in the mid 1980s and has been a Board member for the last three years. He is an osteopath, running his own wellbeing practice in Theale, is a diesel train driver, a trainee fireman, and has been on the organising committee of both The Polar Express and the railway's 1940s event Back to the Forties. On accepting the role and on the challenges ahead, Michael says "my passion for trains started at a young age as a trainspotter on the platform at Pangbourne Station. This passion continues now in the Cholsey & Wallingford Railway and in bringing the enjoyment I have for all things railway to a new audience. I'd like to thank the Board for placing their trust in me to lead the Railway. Tony leaves big shoes to fill and under his leadership over the last three years the Railway has been transformed into a better place for both our visitors and our volunteers alike. I'd like to see us continue these advances, increase our volunteer numbers, widen our involvement in school and community groups, and carry on the modernisation of the railway in terms of our management structure and systems, such as a new website and installing wifi at Wallingford Station. It is an exciting time in Cholsey & Wallingford Railway's history and I look forward to the many challenges that we'll face together over the next stage of our development".

It is also the Railway's pleasure to announce that Board member Peter Mitchell has been appointed Vice-Chair of the Society to work alongside Michael. He has previously been Chair of the Quanton Railway Society and is owner of the Sentinel steam train Isebrook that is stationed at Wallingford. Peter replaces John Cook who also retired from the Board.

Joining Michael and Peter on the Board is Paul Milnes, who was voted in by Society members at the AGM. He says he "...looks forward to serving the membership, acting in the railway's best interests, assisting with regulatory compliance, supporting our volunteers, and helping develop Cholsey & Wallingford Railway into a leading heritage line".

Cholsey & Wallingford Railway congratulate Michael and Peter on their new roles, welcome Paul to the Board, and thank Tony and John for their leadership and years of dedication to the Railway. For further information please email: [bunk@bunkline.uk](mailto:bunk@bunkline.uk)



**A PLACE TO**



**EXPRESS YOURSELF**

**Unlock your child's potential**

Stagecoach Wallingford

Singing, dancing and acting classes for 4 - 18 year-olds

 [stagecoach.co.uk/wallingford](http://stagecoach.co.uk/wallingford)  
 01235 390 810  
 Wallingford School, OX10 8HH

 **Childcare Choices**  
 WE NOW OFFER TAX-FREE CHILD CARE!

 **STAGE COACH**  
 Creative Courage For Life

TRAFALGAR ENTERTAINMENT | COMPANY

Stagecoach Performing Arts is the trading name of Stagecoach Theatre Arts Limited. Stagecoach Theatre Arts schools are operated under franchise and are independently owned by their Principals. Stagecoach and Creative Courage For Life are registered trademarks of Stagecoach Theatre Arts Limited.

**Shaun Guard**

**TV & WIFI SERVICES**

- **Aerials** - supplied, repaired & poor reception solved
- **Satellite** - Sky Q dish upgrades, discreet dish installation also foreign TV
- **Internet** - blackspots cured, data cables to your TVs / computer
- **TVs** - hung on your wall or set up & tuned

 **OXFORD AERIALS**

**Call Wallingford**  
**01491 833282**  
[www.oxfordaerials.co.uk](http://www.oxfordaerials.co.uk)

**Have you a Lasting Power of Attorney?**

Anyone can have a stroke, accident, dementia... and lose mental capacity with age



**HELP-PEN-HAND**

**Who will speak for you?**

Learn about LPAs for just £35.  
Contact me and I will help you. Val Wolsey  
01491 836820 | [HelpPenHand@gmail.com](mailto:HelpPenHand@gmail.com)

**communityfirst** 100 years  
oxfordshire

**'The planning consultancy with a conscience'**

We provide services to parish and town councils, private individuals, the voluntary and community sector, commercial clients, and landowners.

We understand communities and we know planning - advice is provided by chartered members of the Royal Town Planning Institute.

Visit [www.communityfirstoxon.org](http://www.communityfirstoxon.org).  
Email [info@communityfirstoxon.org](mailto:info@communityfirstoxon.org) or call 01865 883488 to talk to us about your needs.

 **St Mary's & St Leonard's Wallingford**  
*open to God, open to all*

8am St Leonard – Holy Communion  
10am St Mary-le-More – Parish Communion with Children's Church, All Age Worship or Family Service (also live-streamed)  
6.30pm St Leonard – Evensong

[www.marylemore.co.uk](http://www.marylemore.co.uk)

Team Rector: The Revd David Rice Tel: 01491 202188

YouTube 

Dr. A. Ratti BDS (Hons) Kings College London

**ST MARY'S DENTAL PRACTICE**

**New patients welcome**

Affordable quality private dental service from a caring team

New maintenance plan available from Jan 2018

Call for more information  
**01491 825 252**  
[www.stmarysdental.co.uk](http://www.stmarysdental.co.uk)



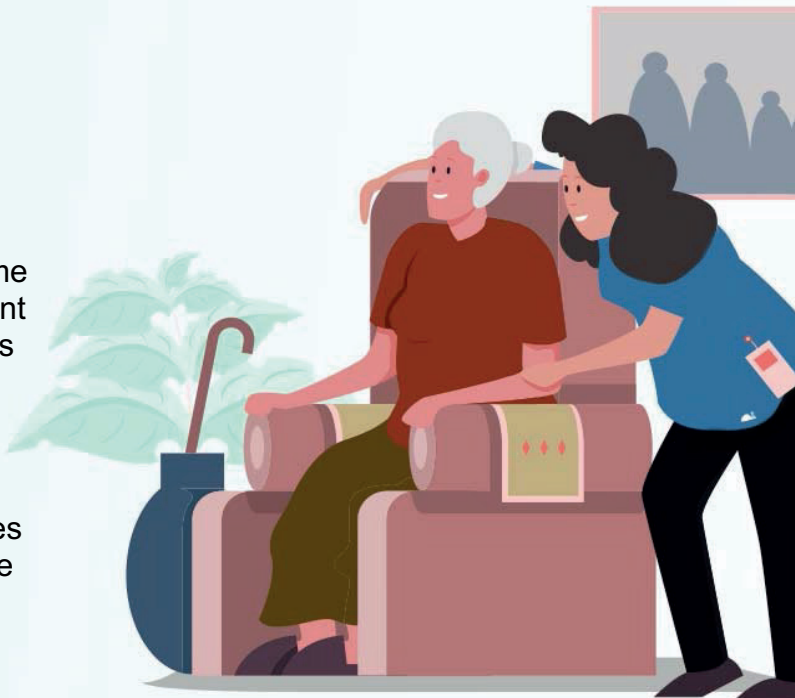
# Q1Care

## Do you, or a loved one, require support at home?

Q1Care prides itself in offering 'high quality' home care to enable people to stay safe and independent at home. We offer as much, or as little, support as required. From *companionship, practical help,* through to *complex needs.*

## Work with us?

Become a valued employee, join a team that cares and make a difference to your community. Please email: [heloise.slater@q1care.co.uk](mailto:heloise.slater@q1care.co.uk) for more information.



Home Care across West Berkshire & South Oxfordshire

Email us: [info@q1care.co.uk](mailto:info@q1care.co.uk) / [heloise.slater@q1care.co.uk](mailto:heloise.slater@q1care.co.uk)

Call us: 0118 932 3865

Visit us: [www.q1care.co.uk](http://www.q1care.co.uk)




  
**Crosby Engineering**
  
 Latest Diagnostic Software
   
 All Makes & Models Serviced & Repaired
   
 Laser 4 Wheel Alignment
   
 MOT
   
 Air Conditioning servicing
   
 Free Local collection
   
 Audi BMW Mercedes VW Specialist
   
 Family Run Buisness In Wallingford Since 1980
   
**01491 834544**
  
 Unit F The Croft
   
 Whiteley Road
   
 Hithercroft Ind Est
   
 Wallingford
   
 Ox109rg

**No Problem**  
**No Call Out Charge**

**Gutters Cleared**  
 We remove leaves - moss - grass - growth & debris

**12,500+**  
 ★★★★★  
 REVIEWS

**Photos**  
 Before & After  
 We do a camera survey first

**Go High**  
 4 Storeys, Commercial, Schools, Hotels & Industrial

**Damp & Mould**  
 Can be caused by blocked gutters

**Weight & Damage**  
 Up to 50kg of debris straining your gutters

Get an instant price  
**01491 815 450**

or online  
[gutterpro.co.uk](http://gutterpro.co.uk)


  
 VISA    MASTERCARD


Vacuum cleaners - repairs bags & accessories  
 Power washers Steam cleaners Carpet cleaners  
 Scrubber driers Window cleaning poles Sanders


**CLEAN MACHINE**

1 & 2 St. Peters Place, Wallingford OX10 0BG  
**01491 825600 Hire & Sales**  
[www.machinesthatclean.com](http://www.machinesthatclean.com)  
 e-mail: [info@machinesthatclean.com](mailto:info@machinesthatclean.com)



 @cleanmachineltd
  Find us on Facebook /CleanMachineLtd



THE WALLINGFORD BOOKSHOP  
 10C ST. MARTIN'S STREET  
 WALLINGFORD, OXFORDSHIRE OX10 0AL  
 Telephone / Fax: 01491 834383  
 Email: [books@wallingfordbookshop.com](mailto:books@wallingfordbookshop.com)

We offer friendly informed assistance and an excellent range of books, audios and fine art stationery.

Many titles not stocked can be obtained within 24 hours.





**From  
£895\***  
for a fully  
fitted electric  
garage door.

**Gotta get a Garolla.**



Garolla garage doors are expertly made to measure in our own UK factories, they're strong and solidly built. The electric Garolla door rolls up vertically, taking up only 8 inches inside your garage, maximising valuable space. Our expert local installers will fit your new door and they'll take away the old one too, so there's no mess.

Give us a call today and we'll come and measure up **FREE** of charge.

**GAROLLA**  
ROLLER  
SHUTTER  
DOORS

[www.garolla.co.uk](http://www.garolla.co.uk)

CALL US TODAY ON:

**01235 280 072**

MOBILE:

**07537 149 128**

**LINES OPEN 7 DAYS A WEEK**

\*Offer valid for openings up to 2.4m wide & including 2 remote controls, 55mm white slats, internal manual override.

Sandberg Tablet Stylus £6.95



For the  
**technophobe**



ColorWay Silicone Microfibre Cloth £2.65



ESET Internet Security for one device £29.50

Logitech Pebble Bluetooth & Wireless Mouse £19.95



For the  
**always on the move**



13-14.1" Dicota Slim Eco Laptop Case £21.95



PREVO SP2010 4-Device Portable Charger £12.95



USB-A Travel Charger for use in UK, Europe, USA & Australia £9.50

Genius NX-7000 Wireless Mouse Blue/Black/Green/Red/White £10.95



For the  
**home worker**

# CHRISTMAS GIFT IDEAS

For the  
**difficult to buy for**



ENER-J Smart Fingerprint Padlock £23.95



Lenovo Full HD 1920x1080 USB 2.0 Webcam £41.95



piXL Single Monitor Arm Desk Mount £19.00



Microsoft Desktop 2000 Wireless Keyboard & Mouse Set £35.95



ENER-J Smart Bulb (Full colour spectrum) £9.95



Genius Keyboard Ergonomic Wrist Rest £8.95



Tenda Beli SP6 Wi-Fi Smart Plug £10.50



ENER-J PRO Smart Wi-Fi Video Doorbell £67.50

## PC TECHNICIANS

Unit B, The Croft, Whiteley Road, Wallingford, OX10 9RG  
[www.thepctechnicians.co.uk](http://www.thepctechnicians.co.uk) 01491 825449



## The Maker Space at The Crown

A few years after the old Crown at Nuffield pub was closed, it has finally been resurrected into a buzzing cafe and workroom by Kay Surman and her husband John. They bought the 18th Century building in May 2020 and spent months in lockdown transforming it into a 'go to' destination for walkers (with or without dogs which are very welcome), cyclists and for anyone who is lucky enough to find this lovely venue on the Wallingford to Henley main road, and next to The Ridgeway National Trail too.

Open from 9-4 every day of the week, they serve a wonderful selection of home made cakes and warm drinks if you just want to pop in for a catch up with friends, or a lunch menu which includes home made soups, toasted sandwiches, rolls, sausage rolls, cheese scones served with salad and/or chips.

I had the delicious roasted tomato soup with a cheese scone and butter followed by a slice of apple, blackberry and thyme sponge cake. Other cakes on the counter that day were carrot, date and clementine sponge; ginger, pear and allspice, and a coffee and nut loaf. The selection changes every day. They are licensed too if you prefer a glass of something!

There is a large child and dog friendly garden around the back for fine weather days, or inside in the original two rooms of the pub, now refurbished with wood panelling and a log burner for colder days.

Where does the name 'Maker Space' come from? Well, they passionately believe there is a craft for everyone, so they've transformed their barn into a bright, open space where you can learn to make something beautiful. Classes include silversmithing, mosaics, sewing and beadwork, quilting, embroidery, wood block printing, ceramics – and lots more to follow such as Christmas decorations and wreath making. Look at their website [www.themakerspace.co.uk](http://www.themakerspace.co.uk) or follow them on Instagram @the.maker.space or Facebook @themakerspacehq

**The Maker Space at The Crown, Gangsdown Hill, Nuffield, Henley-on-Thames, RG9 5SJ. Tel: 01491 642300**



## Wallingford Wine of the Month – Lacuesta 'Campeador' Rioja Crianza 2017

**Grape Minds in Wallingford has just celebrated its first year anniversary, and we're thrilled by the place we've managed to carve for ourselves in our little corner of town. It simultaneously feels like we've been here for years, but I also remember like yesterday the autumnal first days of our opening, and the favourite wines of the time. This month, I'm focusing on a wine typical to chill autumn evenings.**

There is something extremely satisfying and warming about good Rioja. Its deep cherry flavours are enhanced by vanilla and woodsmoke, unavoidably drawing comparison with warm firesides, fruit harvests and spicy treats. For me, the sign of great Rioja is the careful treading of the line between fruit and oak: the very best integrate the spicy vanilla notes of the barrel with the exuberant black cherry of the native Spanish grapes, particularly Tempranillo.

Rioja has a long and proud history, being the first place many experienced winemakers fled when the vine-bothering pest phylloxera ravaged the vineyards of Bordeaux. The techniques and technology they brought with them ensured that, when Spain classified its best regions, Rioja was one of only two that could offer the top 'DOCa' status. Within the Rioja classification, there are several levels: 'Joven', 'Crianza', 'Reserva' and 'Gran Reserva'. These refer only to the amount of time aged in oak and in bottle, and are not inherently a sign of quality (though barrels and cellar space are expensive, so if you make a Gran Reserva with bad grapes, you might have a lot of expensive vinegar on your hands...)

The Campeador (literally 'Champion') is a Crianza, meaning it has spent 18 months in barrel and a year in bottle in the cellars of Rioja prior to release. This gives the final wine depth, but leaves a certain youthful vigour to the wine. It also means it can be consumed within a few years of production. This expression from Martinez Lacuesta was specifically designed to provide a more modern take on Rioja, using American oak and a high proportion of Garnacha from the warmer regions of Rioja Baja. This first modern cuvee was released in 1917, and can probably be considered a success.

If your experience of Rioja stops with Campo Viejo, let me encourage you to give this bottle a try. It's a beautifully made wine that warms the cockles and doesn't dent the wallet too extensively. A modern classic, and a fine way to spend an autumnal evening.

*Michael Jelley is the Director of Grape Minds Wallingford*



**Wine Name:** Campeador Rioja Crianza 2017 **Producer:** Martinez Lacuesta **Grapes:** Tempranillo, Garnacha **Region:** Rioja, Spain

**Exclusive Price: £13.99/bottle until the next issue. Just mention Window on Wallingford in store!**





# THE MAKER SPACE

**WORKROOM | CAFE | STORE**

OPEN 7 DAYS A WEEK  
9am – 4pm

Breakfast 9am – 11.30am

Lunch 12pm – 3pm

The Maker Space at The Crown  
Gangsdon Hill, Nuffield  
Henley-on-Thames, OXON RG9 5SJ  
Tel: 01491 642300  
[www.themakerspace.co.uk](http://www.themakerspace.co.uk)



# RIBIZLI Cafe

**Welcoming Café specialising in healthy Vegetarian & Vegan food**

facebook 5 Star Customer Reviews  
Google Reviews 4.8 ★★★★★  
tripadvisor

- Speciality Coffee
- Loose Leaf Teas
- Delicious Breakfasts
- Healthy Lunches
- Artisan Bread & Pastries
- Homemade Cakes
- Super Smoothies
- Amazing Ice Creams
- Milkshakes

Tuesday to Friday 9:30-3:30  
Saturday 9:30-4:00

**53 St Mary's Street, Wallingford, OX10 0ER**  
[www.ribizli.co.uk](http://www.ribizli.co.uk) – 07926 870082

# WALLINGFORD TEA & COFFEE

We roast High Grown Coffees and we stock Quality Teas together with a range of Herbal beverages and Spices plus a wide variety of Tea and Coffee accessories

Wallingford Tea & Coffee Company Limited  
6a St. Martin's Street  
Wallingford, Oxon. OX10 0AL  
Telephone: 01491 836263  
[kitchtea@gmail.com](mailto:kitchtea@gmail.com)



# Londis


38 Sinodun Road, Wallingford Tel: 01491 837932

Fruit & Vegetables • Newspapers • Magazines  
Beers & Wines • Mobile Top-up Vouchers

Plus the National Lottery

**best value locally**

Opening hours:  
Mon-Sat. 6.00am-8.00pm  
Sunday 6.30am-1.00pm



# Avanti ITALIAN RESTAURANT

Dining In  
Takeaway  
Delivery Service

Tuesday to Saturday

Order online  
[avantiitalian.com](http://avantiitalian.com)  
or call 01491835500



**Don't forget: Tell them you saw their advert here!**



Our fabulous advertisers make your magazine possible – please use them



# Red Lion

Brightwell cum Sotwell  
Corinne & Mouse Welcome you.  
*Pop in and Say Hello*

The Street, Brightwell-cum-Sotwell, Oxfordshire OX10 0RT  
01491 837 373  
[www.redlionbrightwell.co.uk](http://www.redlionbrightwell.co.uk)  
FB: RedLionBrightwellcumSotwell



# Advertise with us

Easily reach the local customer-base for your local business every month...

# GRAPE MINDS

Hand-selected wines, spirits and beers



- Free delivery for 6 or more bottles
- Party services (sale or return, free glass hire & more)
- Friendly advice
- Tasting evenings
- Wine open to try

Oxfordshire Business Awards



Retailer of the Year 2022

10 St Martin's Street, OX10 0AL

01491 824549

[www.grapemindsdrinkalike.co.uk](http://www.grapemindsdrinkalike.co.uk)

## Manor Café at Howbery

Open: 9am-4pm, Mon-Fri

MANOR CAFÉ  
at  
Howbery



- ✓ Hot and cold drinks, homemade cakes: all day
- ✓ Breakfast: 9.00am - 10.30am
- ✓ Paninis, baguettes and baps: 11.00am - 2.00pm
- ✓ Hot and cold lunch options: 11.30am - 1.30pm

Order online or at service counter | Outside and indoor seating areas  
Takeaway service | Beautiful grounds | Ample parking

[www.howberypark.com](http://www.howberypark.com)



Shellfish Com  
Restaurant & Bar

28 High Street  
Wallingford

[www.shellfishcom.co.uk](http://www.shellfishcom.co.uk)

01491 832 807

[wallingford@shellfishcom.co.uk](mailto:wallingford@shellfishcom.co.uk)

Friday 2nd, 9th & 16th December  
Saturday 3rd, 10th & 17th December  
7PM TO 12:30 AM

## BOOK YOUR CHRISTMAS PARTY NIGHT

*The George Hotel*

BAR OPEN UNTIL MIDNIGHT & DJ UNTIL 12.30AM  
ONLY £34.95 PER PERSON

FOR MORE INFORMATION OR TO MAKE A BOOKING  
CONTACT US ON 01491 836665  
HIGH STREET - WALLINGFORD - OXFORDSHIRE - OX10 0BS  
E-MAIL: [INFO@GEORGE-HOTEL-WALLINGFORD.COM](mailto:INFO@GEORGE-HOTEL-WALLINGFORD.COM)

## THE COOKHOUSE — DELI — WALLINGFORD

We supply traditional delicatessen styled goods, varying from speciality store cupboard ingredients all the way through to indulgent treats in local cheeses, locally brewed ales and perfect accompaniments to help create the perfect family kitchen.

14 Market Place, Wallingford OX10 0AD



EST. 1995

## Mr & Mrs Park's

FAMILY BUTCHERS

High welfare local produce  
Knowledgeable and friendly service  
A great range of local cheese, wines and much much more.

*Check out our website or follow us on Facebook or Instagram to learn more.*

5 The Pound, Cholsey, Wallingford, Oxfordshire, OX10 9NS  
01491 651300 • [info@mrandsrspark.co.uk](mailto:info@mrandsrspark.co.uk) • [www.mrandmrsparks.co.uk](http://www.mrandmrsparks.co.uk)



**Come and join us.**

14 - 18 November 9:30am - 3:00pm

**Open Week**

EXCELLENCE IN INDEPENDENT EDUCATION FOR BOYS AND GIRLS AGED 3-18

Guided Tours  
BOOK YOUR ATTENDANCE  
Available

**CRANFORD HOUSE**

Discover all that a Cranford education can offer your child.  
[www.cranfordhouse.net](http://www.cranfordhouse.net)

**HAVE TROUBLE WITH YOUR TREES?**

NEED SOME HELP? ASK THE EXPERTS

- Tree removal
- Tree thinning
- Stump grinding
- Hedge trimming
- Tree pruning
- Tree felling
- Landscaping
- Fencing

We are city & guilds nptc qualified and insured you can feel safe dealing with us.

Call now to see how we can help Free no obligation quote

**1<sup>st</sup> CLASS TREE SURGEONS**

E. [quote@firstclasstreesurgeons.co.uk](mailto:quote@firstclasstreesurgeons.co.uk)

T. 07889 881 525  
[firstclasstreesurgeons.co.uk](http://firstclasstreesurgeons.co.uk)

**Mallams 1788**

**Thinking of selling your Jewellery, Watch or Silver?**

Mallams' specialist Louise Dennis FGA DGA, is available to give **free** confidential valuations on any piece(s) you are considering selling at auction.

**Home visits also available**

Enquiries: 01865 241 358 or [louise.dennis@mallams.co.uk](mailto:louise.dennis@mallams.co.uk)  
[www.mallams.co.uk](http://www.mallams.co.uk)

**WEPS**  
WALLINGFORD ELECTRICAL & PLUMBING SUPPLIES

**OPEN TO THE TRADE & PUBLIC**

☎ **01491 827825**  
✉ **SALES@WEPS.ORG.UK**  
**UNIT 1 MOSES WINTER WAY**

**KJ MOBILE HAIR**

*Katie Dnew*  
Cutting Technician

Phone/Text 07730400595  
Email: [kjmobilehair86@googlegmail.com](mailto:kjmobilehair86@googlegmail.com)

**HAYNES**  
Car Care Centre  
servicing...batteries...tyres...fantastic value

Bushells Business Park, Lester Way,  
Wallingford Oxon OX10 9DD  
[www.haynes-car-care.co.uk](http://www.haynes-car-care.co.uk)

- All Makes Servicing and MOT's
- Parts & Accessories
- Air Con Re-Gas
- Courtesy Car
- Batteries & Tyres
- 4 Wheel Laser Tracking

Proud Sponsors of Wallingford Vehicle Rally & BunkFest

**01491 836 097**