

# WOW



**HOMEBASE**  
PROPERTY  
— SALES • MANAGEMENT • LETTINGS —

We'll  
get you **MOOVING**



# Daniel Hoadley Garden Services



- Hedge Cutting + Reductions
- Fencing + Repairs
- Clearance + Tidy up
- Lawn Mowing + Weeds

07498235485

## C. A. HOLTOM Building Contractor

Established 1988

FOR ALL TYPES OF

Building – Extensions – Plastering – Refurbishment  
Alterations – Brickwork – Patios – Drainage

Tel: 01491 651141 / 07990912966

Email: choltom1@sky.com

### Fireplace Magic

#### Stoves & Fireplace Sales

- Solid fuel, gas or electric fires
- Installation
- Chimney sweeping
- Woodburner servicing
- Chimney lining
- HETAS registered



Visit our showroom at  
45 Prospect Street  
Caversham RG4 8JB  
Tel: 0118 9463060

[www.fireplacemagic.co.uk](http://www.fireplacemagic.co.uk)



### Domestic Maintenance

- Window Cleaning
- Conservatory Roof Cleaning
- Gutter Clean / Repair
- Patio / Driveway Clean
- Waste Removal
- Gardening
- Hedge Cutting
- Painting and Decorating
- Fencing
- and much more...

For a FREE quotation please call Sam on  
07926 415 176

Also follow SB Domestic Maintenance on Facebook for an up to date portfolio of completed works and monthly special offers

# HOMEBASE PROPERTY

★ WHATEVER YOUR PROPERTY NEEDS ★

**SALES**

**LETTINGS &  
MANAGEMENT**

01491 824470 | [info@hb-pm.co.uk](mailto:info@hb-pm.co.uk)  
16B St Mary's St, Wallingford, OX10 0EW

### Illumin-Nation Ltd

5 St Peters Place, St Peters Street  
Wallingford, Oxon OX10 0BG

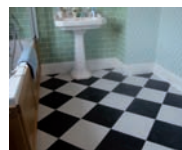
[allan.pridde@btconnect.com](mailto:allan.pridde@btconnect.com)

[www.illumin-nationltd.co.uk](http://www.illumin-nationltd.co.uk)

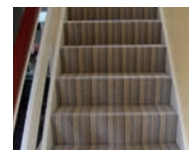
01491 833505

# Masterfloors

Contract and Domestic Flooring Specialists



20 St. Martin's Street  
Wallingford  
Oxon. OX10 0AL  
Tel: 01491 833701  
Free estimates



[www.masterfloorswallingford.co.uk](http://www.masterfloorswallingford.co.uk)



## Welcome to your community magazine

To advertise in Window on Wallingford please contact us on: [info@windowonwallingford.co.uk](mailto:info@windowonwallingford.co.uk)

### Adverts:

Must be sent in JPEG or PDF formats in their highest quality.

### Advert sizes:

- 95 mm x 53 mm
- 95 mm x 110 mm
- 192 mm x 50 mm
- 210 mm x 297 mm
- 210 mm x 148 mm

### Articles:

Supplied in MS word. Please provide any photos or images including logos separately (jpeg files) that you would like in your article.

### Deadline date to submit: 7th May

**Editor:** Naomi Reddyhoff

[info@windowonwallingford.co.uk](mailto:info@windowonwallingford.co.uk)

**Marketing, Accounts & Administration:** Jessica Dovey

[jess@windowonwallingford.co.uk](mailto:jess@windowonwallingford.co.uk)

**Distribution:** Naomi Reddyhoff

[info@windowonwallingford.co.uk](mailto:info@windowonwallingford.co.uk)

**Advertising Sales:** Lesley Longden

[lesley@windowonwallingford.co.uk](mailto:lesley@windowonwallingford.co.uk)

**Cover Photo:** Steven Gozdz of GG Wildlife Experiences.



### Firecrest Facts

These little birds are rarely seen but South Oxon is a good place to find them. British Trust of Ornithology surveys suggest there are only 2000 territories in the UK. Weighing only 6g and 9cm long they are the second smallest bird in Europe just behind the Goldcrest.

 [@windowonwallingford](#)

 [@window\\_on\\_wallingford](#)

Whilst every effort is made to ensure the accuracy of information printed in the magazine, the Editor and Publisher do not accept any responsibility for the consequences of any errors that may occur. Material published in the Window on Wallingford Magazine is copyright, but normally the Editor will be pleased to grant permission for it to be reproduced, if asked on each occasion. The opinions published in this magazine are not necessarily those of the Editor, Publisher or WoW.

Adverts will continue to run unless cancelled.

Hi Everyone

We've had some glorious sunny days, so good for the soul. Great for gardening, walking, coffee with friends.

If you need some inspiration for your garden, then visit Purely Plants. The business was started 25 years ago and specialises in beautiful hanging baskets for any time of the year. They also offer an extensive range of bedding plants, vegetable plants and perennials. Bottom of Wantage Road by the roundabout. [www.purelyplants.co.uk](http://www.purelyplants.co.uk)

Check out our dining review of the Red Lion in Brightwell, just delicious, a great atmosphere with friendly staff. 10 out of 10 all-round.

The family page is back, things for kids and parents to get involved in, how and when. Lots to do in the What's on Section too.

I am looking for someone who knows Wallingford really well; I have a couple of small challenges in the distribution of WoW. Try as I might to find the little hick-up I can't. I am after someone to help investigate this and cure the problem. I am happy to pay for your time, not a lot but at least minimum wage. So, if you think you are up to the challenge of being a bit of a sleuth problem solver, please, please get in touch with me. [info@windowonwallingford.co.uk](mailto:info@windowonwallingford.co.uk). Many thanks.

I'd like to thank **Steven Gozdz of GG Wildlife Experiences** for the fantastic cover shot and for the most generous WoW Readers offer he has made for us. Check it out on page 19.

So, all that's left to say.

Have a fabulous month of May

Stay safe, have fun

Naomi x

# We Let...



# ...You Relax



01491 824000

Trusted to let and manage properties from our Wallingford office since 1992.

[lettings@winterbookestates.co.uk](mailto:lettings@winterbookestates.co.uk)

**AASVOGEL**  
The Waste Management Solution

# Skip Hire Caged Tipper Waste Management

☎ 01235 760555

✉ info@asvogel.co.uk    🌐 www.asvogel.co.uk

[ Mention Window on Wallingford when you call ]

## CARE DRY CLEANERS

10B St. Martins Street, Wallingford OX10 0AL  
Tel: 01491 837318

- Suede Leather • Alterations • Press Services • Wedding Dresses •
- Settee Covers • Rugs • Laundry • Duvets • Curtains

**Electrical**  
**Plumbing**  
**Fire and Security**

**Call: 01491 835875**

Email - reception@groupga.co.uk  
Unit H Moses Winter Way, Wallingford, OX10 9FE

**MEIC**  
DOMESTIC INSTALLER

**safe**  
REGISTERED

## A.G.CURTAIN DESIGN LTD

www.agcurtaindesign.com

BEAUTIFUL CURTAINS, BLINDS & SOFT FURNISHINGS  
01491 834238

Made Exclusively For Your Home  
Bespoke Curtains & Soft Furnishings

Blinds & Shutters  
Modern & Contemporary

- 15 years serving clients in South Oxfordshire
- 1,000's of design lead fabrics to choose from
- Expert making and fitting service
- Curtains & Soft Furnishings
- Poles – tracks – finials & tie backs
- Cushions - lamp shades & headboards
- Made to order promptly & efficiently
- Free measure & quotation service

- Wooden & Venetian
- Roller & Vertical
- Perfect fit & Faux Wood
- Made to fit your windows
- Inside & Outside recess fit
- Manual & Remote controls
- For all rooms in your home or business

VISIT OUR RETAIL STORE AT 3 ST, PETERS PLACE, WALLINGFORD, OXON. OX10 0BG

## ADP FLOORING

**Adrian Pitson**

Carpet, Vinyl, Wood, LVT Flooring expertly fitted

• Over 30 years experience • Supply & fit • Professional & reliable

adpflooring@hotmail.com • 07528 210 562

Everything you want but don't really need!

4 Castle Street,  
wallingford  
Ox10 8DL

Instagram: @theshackwallingford

Doing our bit to recycle ♻️

### Wallingford Methodist Church

St Leonard's Square, OX10 8AS

**Sunday Worship 10.30 am**  
**EVERYONE WELCOME**

The resumption of other activities is planned  
Please check the notice boards outside the church for details  
or the website [www.wallingfordmethodistchurch.org.uk](http://www.wallingfordmethodistchurch.org.uk)  
Contact our minister, Rev. Jocelyn Bennett, with any enquiries.

Tel 01235 813242 email [jocelynbennett@methodist.org.uk](mailto:jocelynbennett@methodist.org.uk)

Vacuum cleaners - repairs bags & accessories  
Power washers Steam cleaners Carpet cleaners  
Scrubber driers Window cleaning poles Sanders

**CLEAN MACHINE**

1 & 2 St. Peters Place, Wallingford OX10 0BG  
**01491 825600 Hire & Sales**  
[www.machineshatclean.com](http://www.machineshatclean.com)  
e-mail: info@machineshatclean.com

@cleanmachineltd    Facebook: /CleanMachineLtd

Claire Sweeney DipFH MCFHP MAFHP  
Covid-19 double vaccinated & boosted

Covid secure home visits to manage

- Regular nail care
- Ingrowing and thickened nails
- Corns and callus
- Cracked heels
- Diabetic foot care

t: 07762 369472    e: [Claire@personalfootcare.uk](mailto:Claire@personalfootcare.uk)  
w: [www.personalfootcare.uk](http://www.personalfootcare.uk)    Facebook: [personalfootcaremobile](https://www.facebook.com/personalfootcaremobile)

# WOW WHAT'S ON! 1

## The Young at Heart Club is BACK!!!!

After a long Covid - enforced break, Age UK Oxfordshire will be restarting the Young at Heart Club on **12th April, 2.00-4.00pm** at the **Masonic Hall, Goldsmith's Lane, Wallingford OX10 0DU**.



We will be running on the second Tuesday of every month - apart from in June when it is the third Tuesday of the month, 21st June. On that day Age UK Oxfordshire will be hosting a Vintage Afternoon Tea party to celebrate the Queen's Jubilee. More details to follow next month.

Please come along to the club for a couple of hours of tea, coffee, biscuits and a chat, a speaker or entertainment and a game or two of Bingo. The cost is £3.50, pay on the door. The club is open to anyone over the age of 50 and we would welcome new members!

Any questions please ring **Rachel Poole, 07827 235460**.

## Wallingford Allotments and Gardens Society (WAGS)

WAGS will be holding their May 2022 plant sales starting on **Saturday 7th May and running for 2-3 Saturdays at Centre 70**. Come along between 10am and noon. A huge thank you to our lovely members who have nurtured a large range of summer bedding, vegetable and hardy plants with all proceeds going towards running the Autumn Show.

Our Centre 70 store also has good levels of stock on peat-free composts, fertilisers and nutrients, weed and bug control, plant supports, plant canes, labels, grass seed, netting, membrane, fleece, ornamental bark, horticultural grit, aquatic supplies, grow bags and more. We are open Feb-July and Sept-Oct 11am-12noon on every Saturday (we are shut November to January and also for the month of August). We share the space with Wallingford Local Producers Market but parking is available for WAGS customers.

Save The Date! Our **Autumn Show** is **Saturday September 10th** and more info will be published on the WAGS Facebook page

**[www.facebook.com/WallingfordAGS/](https://www.facebook.com/WallingfordAGS/)**

Happy Growing!

Jayne Page on behalf of the WAGS Committee

## Festival of Ewelme - Watercress Painters.

The Ewelme Watercress Painters will be playing their part in the upcoming **Festival of Ewelme** over the Jubilee weekend, **2-5 June 2022** with an exhibition along the theme 'What Ewelme means to me' with artworks depicting various aspects of this historic South Oxfordshire village as well as other paintings and arts and crafts by Ewelme villagers.

Also featured will be the delayed unveiling of their huge composite of David Hockney's Spring Tunnel consisting of 12 x A3 parts of this painting in different media. This started as an idea in 2019 when members brought along copies of paintings which they each felt a passion for and a vote was held. The winner turned out to be one of David Hockney's depictions of the Yorkshire Wolds - the joyful Spring Tunnel celebrating Spring in all its glory. He completed large canvasses of the same scene in winter, spring, summer and autumn and each was shown at his exhibition 'A Bigger Picture' held at the Royal Academy in 2012. We can't say that it will sell for £20.3 million as per the sum paid a couple of years ago for his wonderful painting 'The Splash' but it will hopefully bring some joy!

The exhibition will be held in the beautiful village church of **St Mary's, Parsons Lane, OX10 6HS Friday, Saturday, Sunday 3,4 and 5 June from 10-4**. The Watercress Painters look forward to welcoming you over what we hope will be a glorious and memorable weekend.

More details: **Trisha Scott - Watercress Painters - [trisha.watercress@hotmail.co.uk](mailto:trisha.watercress@hotmail.co.uk)**

## Cholsey Repair Café

Cholsey Repair Café's next event will be at the Cholsey Pavilion on **Saturday 21st May, opening from 11.00 to 13.45** and offers help and advice on repairs to many kinds of domestic items (instead of throwing them away), a sharpening service and electrical safety testing. Repair help is free but donations towards the cost of hall hire are appreciated. The repair cafe runs regularly on the third Saturday of odd-numbered months and coincides with the Cholsey Community Café, where you can get tea, coffee and tasty cakes.

More helpful information can be found at **[www.cholseyrepaircafe.com](http://www.cholseyrepaircafe.com)**.

## Wallingford Photographic Club

As the season comes to a close, and the members break for summer, Wallingford Photographic Club closes the 2021-22 programme with an end of season image competition, followed by our Annual General Meeting. Then we're excited about meeting regularly in person again at Crowmarsh Pavilion from September for a more interactive and sociable season, in person. We look forward to announcing our plans and programme for Autumn. We are also pleased to announce that we will be holding an **exhibition in Wallingford on 2nd and 3rd September: Bunkfest weekend!** Watch this space...

# When your computer sotps mkanig sense...

## PC TECHNICIANS

WINDOWS | APPLE | ANDROID

Call: 01491 825449

Click: [www.thepctechnicians.co.uk](http://www.thepctechnicians.co.uk)

Visit: Unit B, The Croft, Whiteley Road, Wallingford, OX10 9RG



Now only  
**£895\***  
for a fully  
fitted electric  
garage door.

WAS £1,354 INCLUDING VAT.

**Gotta get a Garolla.**

WHAT'S INCLUDED WITH EVERY DOOR:

- FREE EXPERT MEASURING & FITTING
- 2 REMOTE CONTROLS
- ACOUSTIC & THERMAL INSULATION
- FREE DISPOSAL OF YOUR OLD DOOR
- AVAILABLE IN 21 COLOURS



\*Offer valid for openings up to 2.6m wide & including 2 remote controls, 55mm white slats, internal manual override.

Garolla garage doors are expertly made to measure in our own UK factories, they're strong and solidly built. The electric Garolla door rolls up vertically, taking up only 8 inches inside your garage, maximising valuable space. Our experienced installers will fit your new door and they'll take away the old one too, so there's no mess.

Give us a call today and we'll come and measure up completely **FREE** of charge.

**GAROLLA**  
ROLLER  
SHUTTER  
DOORS

[www.garolla.co.uk](http://www.garolla.co.uk)

CALL US TODAY ON:  
**01235 280 072**

MOBILE:  
**07537 149 128**

**LINES OPEN 7 DAYS A WEEK**



## Wildlife Memories by Barry Collett

As one ages (I will be eighty-five by the time you read this) and the ability to visit some of the wonderful places this world has to offer diminishes, one is left with just memories. With time, even these begin to fade, but some have made a lasting impression. In this short series of articles, I will try to remind myself of some of my memories of the natural world and, hopefully, inform and entertain you in the process.

### A Tanzanian Safari

Twelve years ago I travelled to Arusha at the base of Mount Kilimanjaro in Tanzania to begin a two-week safari billed as 'A Last Chance to See...'

Highlights included a leopard in a tree with the remains of his kill, quietly yawning while we took his photograph, and a confrontation with a mature bull elephant that featured some nifty work with the reverse gear of the 4x4 by our local driver. Later, we learned that the same elephant had, a week earlier, overturned a Land Rover by using its tusks like the tines on a forklift truck. In a gentler moment, we watched the courting behaviour of a pair of kori bustards, the world's heaviest flying birds. In the end, the female effectively said to the male: 'If you call that miserable pile of sticks a nest then you can get lost!'

The most enduring memory occurred on the penultimate day of our safari. The driver stopped our vehicle so we could view the spectacle of a long line of wildebeest proceeding on a slow but steady migration. Suddenly there was a flurry of activity as a cheetah rushed through the line, turned and repeated the process. Our guide said, 'What is she doing? She will get herself killed. One stray hoof on the side of her head could prove fatal for a cheetah.' On the cheetah's third pass, the line broke: the wildebeest at the front carried on while the others hesitated. We then heard a faint 'miaow' and three cheetah cubs ran through the temporary gap in the line of wildebeest. Then, to our delight, the entire family of cheetahs walked towards our 4x4. The mother urinated on all four wheels, thus claiming the vehicle as her property, while her cubs rolled around in the sandy soil. We enjoyed the experience for fully half an hour until the cheetahs finally moved away. One of our group, who was equipped with a pair of powerful binoculars, gave an explanation for the strange behaviour we had witnessed: 'There is a pride of lions about four hundred yards to our right on the other side of the line of wildebeest.'

**Next month: Mid-Wales.**

## Let's say "Thank You" to our Medical Staff

### A request from the Patient Participation Group

Not long ago we were standing on our doorsteps clapping our NHS staff. Now, it would seem they are suffering rudeness and abuse. Surely not! Yes, across the UK it is reported that NHS staff are anxious about going to work for fear of being called rude names, shouted at and being accused of failing to give patients appointments on the day that they want them. If only it was as simple as that!

Many surgeries in South Oxfordshire and across the UK are having difficulty recruiting staff. Those staff who are working in our surgery are working under stress for long hours. Our staff offer a huge range of appointments every day from 08.30 – 18.20 – phone calls, F2F - from Doctors, Practice Nurses, Phlebotomists, Counsellors, Social Prescribers, Care Navigator all organised through the team of Receptionists. There are the Pharmacists and the role they play. Additionally, let's not forget the extraordinary number of extra hours given by the team for the Covid vaccinations!

So why are a few patients behaving in an unacceptable way? Some aggressive behaviour can be provoked by pain, frustration and anxiety. When asking for an appointment, the receptionist needs to ask our reason for calling the surgery in order to use the doctors' and nurses' time in the best way possible to benefit each patient as resources are limited and a greater number of elderly people are presenting with several different medical conditions, longer appointments are needed whether on the phone or F2F.

Let's value our NHS staff and respect them for the incredible work that they are doing. If we need a phone call or a visit to the surgery for issues that need immediate attention, we will get it. If we treat the staff in an unacceptable way we may jeopardise our best opportunity to receive the help we are asking for. If you really do have an issue, let the Practice Manager know rather than take it out on the member of staff.

How do you react to the words "Thank You"? We all love it. So let's use it and be patient and kind to our medical staff and we will find they will be pleasant and kind when dealing with us and our requests.

**Sunshine Painting & Decorating**

**LANCE THOMPSON**  
FRIENDLY RELIABLE SERVICE

For All Your Decorating Needs  
Call For A Free Estimate.  
**07780 221950**

lance.sunshine@btopenworld.com      www.sunshinedecorating.co.uk

@sunshinedecorator      @sunshine\_pd

FULLY INSURED | CHOLSEY, OXON



**WATER'S EDGE**  
PLUMBING & HEATING

**Plumbing and Heating Services**

Based in Crowmarsh, fully qualified and insured.  
Contact our friendly office team for a quick response  
to your requirements or to arrange your **FREE QUOTE**

**01491 821 626**

[www.watersedgeuk.co.uk](http://www.watersedgeuk.co.uk) | [contactus@watersedgeuk.co.uk](mailto:contactus@watersedgeuk.co.uk)

- General Plumbing
- Leak Repair
- Central Heating
- Boiler Repairs
- Boiler Installations
- Shower Installations
- Powerflushing
- Gas Safety Services
- Underfloor Heating
- Estate Agent Services

Proud members of



**Checkatrade.com**  
Where reputation matters




**Wallingford**  
— TILES & BATHROOMS

**Tile & Bathroom  
Showroom**



**Call Now 01491 377 272**  
[showroom@wallingfordtilesandbathrooms.co.uk](mailto:showroom@wallingfordtilesandbathrooms.co.uk)



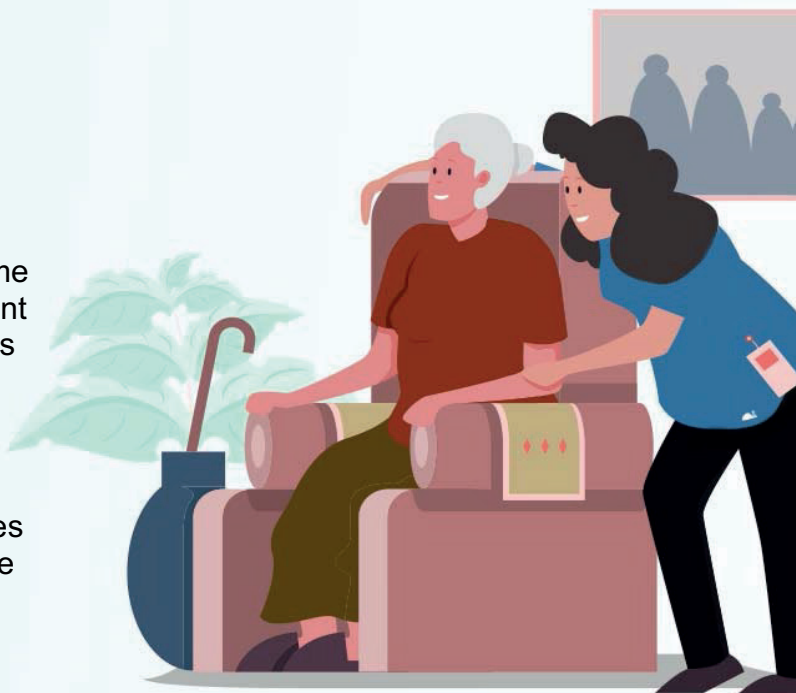
**Q1Care**

**Do you, or a loved one, require support at home?**

Q1Care prides itself in offering 'high quality' home care to enable people to stay safe and independent at home. We offer as much, or as little, support as required. From *companionship, practical help,* through to *complex needs.*

**Work with us?**

Become a valued employee, join a team that cares and make a difference to your community. Please email: [heloise.slater@q1care.co.uk](mailto:heloise.slater@q1care.co.uk) for more information.



**Home Care across West Berkshire & South Oxfordshire**  
Email us: [info@q1care.co.uk](mailto:info@q1care.co.uk) / [heloise.slater@q1care.co.uk](mailto:heloise.slater@q1care.co.uk)  
Call us: 0118 932 3865  
Visit us: [www.q1care.co.uk](http://www.q1care.co.uk)



**Winterbrook Garden Services Ltd**

Garden Design, Construction & Maintenance  
Fencing  
Patios  
Full Pruning Service  
Tel: 01491 838189  
Mobile: 0775 36 36 333  
[winterbrookgs@gmail.com](mailto:winterbrookgs@gmail.com)



**Winterbrook Garden Nurseries**

High Road, Brightwell-cum-Sotwell,  
OX10 0PS

Independent plant nursery  
specialising in herbaceous  
perennials  
& garden curios

[www.winterbrookgardennurseries.com](http://www.winterbrookgardennurseries.com)

 [@winterbrookgardennurseries](https://www.facebook.com/winterbrookgardennurseries) 



## Can you unite your local community and raise funds for Sue Ryder during Platinum Jubilee weekend?

**Sue Ryder, which runs the Sue Ryder Palliative Care Hub in South Oxfordshire, is asking local communities to come together to organise a Platinum Jubilee celebration and raise funds for local people needing their expert and compassionate care**

The charity is looking for people like Sophie and her mother Lee-Ann, who have galvanised their local community to organise a BBQ 'Jubilee jolly' during The Queen's Platinum Jubilee weekend (taking place 2nd – 5th June).

Envisioned and organised by 13-year-old Sophie, her whole street will be coming together to celebrate, connect, and donate to Sue Ryder on Sunday 5th June.

After hearing of Sophie's plans, Sue Ryder is inviting residents across Oxfordshire to unite with their local community to host fundraising street parties of their own during the Platinum Jubilee weekend of Her Majesty The Queen (a Sue Ryder patron).

**Sophie's mother Lee-Ann said:** "Sophie is doing her Duke of Edinburgh's Award and needs to volunteer, but at 13 it's difficult to find a charity where she can do this. Her school said she could organise a charity event instead, and straight away she said she had to do something for Sue Ryder as they cared for Nanny.

*"Our family, friends and neighbours are all really supportive – when we are raising money for Sue Ryder they always help, and we are really grateful. The Platinum Jubilee BBQ will be a chance to have a good time with our neighbours. We're all so busy in our lives and don't often get to see each other.*

*"I would like to thank everyone who has supported us, all the carers at Sue Ryder and our local Sue Ryder shop. The hospice is amazing. They cared for my mum. Sue Ryder's carers are angels in disguise."*

**Meghan Bentley, Community Fundraiser at Sue Ryder Palliative Care Hub South Oxfordshire, commented:** "We're incredibly grateful to people like Sophie, Lee-Ann and their community for organising this Jubilee Weekend party. The funds raised will help to ensure we can continue to offer care and support. We'd love for others to come together and organise their own 'Jubilee jollies' to raise much-needed funds for families needing our care."

### Want to get involved?

Celebrate the reign of Her Majesty The Queen - our wonderful Sue Ryder Patron - by gathering your neighbours, friends and family for your fundraising Jubilee jolly!

Contact the Sue Ryder Palliative Care Hub South Oxfordshire fundraising team by emailing [southoxfordshire.fundraising@sue Ryder.org](mailto:southoxfordshire.fundraising@sue Ryder.org) or calling **01491 522818** for help with your fundraising party ideas.



**palliative,  
neurological  
and bereavement  
support**

## There when it matters

***"It's a privilege to care for someone at the end of their life. I can't imagine doing anything else."***

Vicki Hall is a Nursing Assistant at Sue Ryder Palliative Care Hub South Oxfordshire, where she provides expert and compassionate Hospice at Home care to people living with life-limiting conditions in the community.

Vicki is sharing her story in the hope of inspiring others to find out more about a nursing career with Sue Ryder.

*"It's a privilege to care for someone at the end of their life", shares Vicki. "Especially when you are working out in the community, as you are stepping into their environment and you can get a real sense of who they are; something that is not always possible in a clinical setting."*

*"We meet people when they are going through a very difficult time, but with our specialist knowledge and experience we are able to support them to live the best lives they possibly can. Everybody is on a different journey, but we are here to support them and their loved ones every step of the way."*

The Palliative Care Hub is based in Wallingford and its team of Sue Ryder Nurses, doctors, physiotherapists, occupational therapists, family support and befrienders provide a Hospice at Home service, Day Service and Care Coordination and Advice Line.

As a Nursing Assistant, Vicki visits patients across South Oxfordshire to help manage their symptoms, ensure they are comfortable and provide assistance with personal care. On an average day she will visit between 6-8 patients.

Vicki shares the most rewarding part of her job is ensuring that the end of someone's life is peaceful and dignified. *"I couldn't see myself doing anything else. When you are nursing someone in bed and you make sure that they're comfortable and peaceful before they spend their final moments with their family, it is so rewarding. You leave the house and you think 'this is why I do what I do'. Sometimes I go home and my partner asks how my day went and I just say 'I love my job'."*

Vicki is also keen to share that Sue Ryder is a supportive employer which helps develop its staff too. *"The team at the hub are so lovely and compassionate – we all get on well and support each other when we need it. The flexible shift pattern allows for me to have a great work/life balance and there are lots of training and development opportunities. I am always happy to take staff under my wing and pass on my enthusiasm and passion for the job!"*

*"Palliative care is a different way of caring than other healthcare settings. It's short-term care and it is very tailored and patient-centred. The role is so varied, you meet so many different people and you learn so much. If you can communicate well and you feel confident with difficult conversations, then this is the job for you."*

Sue Ryder Palliative Care Hub South Oxfordshire is looking for Nursing Assistants to join its expert team and be there when it matters. Working at Sue Ryder you're given the time to care and you'll be part of a multidisciplinary team working in a highly rewarding area of nursing.

To find out more about current vacancies, please email [recruitment@sue Ryder.org](mailto:recruitment@sue Ryder.org) or visit [sue Ryder.org/palliativecareers](http://sue Ryder.org/palliativecareers)



# G.R. Galliford

Graham  
07762 650 809  
01491 824583



Mini Digger  
with Operator  
Block Paving  
Driveways  
Patios  
Drop Kerbs  
Groundwork

[g.galliford@btinternet.com](mailto:g.galliford@btinternet.com)

**SHOE REPAIRS**

**ENGRAVING**

**KEY CUTTING**



## FEET FIRST

21 St. Mary's Street, Wallingford  
Contact Gary on: 01491 825224



**WATCHSTRAPS BATTERIES**

**STITCHING REPAIRS**

**TRAVEL GOODS LUGGAGE**

## Fitzcount Land

Land Acquisition > Planning > Development Specialists

- Local knowledge, Oxon, Berks, Hants, Bucks, Beds, Wilts
- County Council specialists
- Planning consent, Promotion, Professional Services

**We specialize in finding the best solution for your land to maximise its potential**

*All initial conversations free, without obligation, in complete confidence and with the upmost sensitivity.*

Talk with Adam Goddard 07493 170307  
[adam@fitzcountland.co.uk](mailto:adam@fitzcountland.co.uk)

**Over 20 years working for our customer partners**

### Benson Angling Centre

Your Friendly Local Angling Centre

Unit 3, Benson Waterfront,  
Benson Wallingford OX10 6SJ

Tel: 01491 838288  
Email: [dibby1949@yahoo.co.uk](mailto:dibby1949@yahoo.co.uk)




Stockists of Drennan E.S.P. Dynamite Baits, Sticky Baits, Baitech, Dead Baits and Live Baits Available. We buy and sell all used angling items

# Shaun Guard

## TV & WIFI SERVICES



- Aerials** - supplied, repaired & poor reception solved
- Satellite** - Sky Q dish upgrades, discreet dish installation also foreign TV
- Internet** - blackspots cured, data cables to your TVs / computer
- TVs** - hung on your wall or set up & tuned

 OXFORD AERIALS

**Call Wallingford**  
**01491 833282**  
[www.oxfordaerials.co.uk](http://www.oxfordaerials.co.uk)



*To us, it's personal*

## Live well, your way

with Care at Home

Your home is where you feel the most comfortable and the happiest. It is the place you know the best. If you want to stay living comfortably at home, Home Instead can help make that possible.

**Home Care is Safe Care**

- Home Help • Companionship
- Personal Care • Dementia Care
- Live-In Care

Maidenhead, Henley & Wallingford  
01865 364 418  
[www.homeinstead.co.uk/wallingford](http://www.homeinstead.co.uk/wallingford)

*"Want to join our amazing team?  
Get in touch - we are recruiting now!"*





## Keri

THE FLORIST

INSPIRATION CREATION TUITION

1 Ayres Yard, Station Road Wallingford, Oxon OX10 0JZ  
T: 01491 838005 E: [keri@wallingfordflowers.co.uk](mailto:keri@wallingfordflowers.co.uk)

[www.wallingfordflowers.co.uk](http://www.wallingfordflowers.co.uk)



## HOWARD CHADWICK FUNERAL SERVICE

A caring family owned and managed Funeral Service

- Dedicated Private Chapel of Rest •
- Golden Charter Pre-Paid Funeral Plans •
- Specialists in Memorial Stones and Designs •

**33 Benson Lane, Crowmarsh Gifford,  
Wallingford OX10 8ED**  
Tel: 01491 825222  
[www.chadwicksfuneralservice.co.uk](http://www.chadwicksfuneralservice.co.uk)





# Wallingford Accessible Boat Club readies for The Off!!

Wheelyboat team prepares for the coming 2022 season

**The Wallingford Accessible Boat Club (WABC), the innovative charity offering disabled and elderly people from the South Oxfordshire area free-of-charge river trips in its Wheelyboat, has almost completed its preparations for the coming season.**

The charity is hoping to operate a large number of trips in 2022 - at a rate of four per week at the start of the season rising to perhaps two per day in the July/August time frame. The objective is to give as many individuals as possible the opportunity to enjoy the glories of boating on the River Thames - for fishing, nature watching, picnicking or simply messing about on the river.

John Jenkins MBE, Chair of Trustees explained: *"We have worked very hard over the winter period to enable us to increase our trip capacity for this year. We have just concluded a very successful recruitment drive for additional volunteer crews adding over twenty local individuals to our existing team - now their training is underway and we are very grateful to Oxford Sailing Club for their support with this. I am delighted to say that six local businesses have agreed to sponsor the charity adding to our resources - Tailormade Building Solutions, Winterbrook Estate Agents, The Dolphin pub, Champions, Pettits of Wallingford and NP Design & Print: our sincere thanks to them all. Additionally, the enhancement of our online Booking System is complete which will considerably smooth the client trip booking process. This is a big step forward. And, not least, our Wheelyboat WOW-one has completed its annual service and looks very smart now with its auxiliary outboard engine. We hope to get it back on the water shortly."*



Jenkins continued: *"We are all very excited about the forthcoming season. All members of our volunteer team are great lovers of the river which makes for a relaxed, happy atmosphere amongst our crews. This all adds to the client experience we are aiming for - to enable the disabled and less mobile people in our area to gain maximum pleasure from their boating experience. Disabled people, whether wheelchair users or ambulant, their families and friends are all very welcome to get in touch and book a trip with us - contact our website [www.wabc.org.uk](http://www.wabc.org.uk) or email: [enquiries@wabc.org.uk](mailto:enquiries@wabc.org.uk). We look forward to hearing from them all."*

## Wallingford Museum News

Wallingford Museum is experimenting in new forms of interpretation namely podcasts and YouTube films.



Our first YouTube film is of Judy Dewey, Curator of Wallingford Museum describing how the castle model fits within the present day town.

The Museum's latest acquisition, GD Leslie's painting 'A Thameside Conversation' is the subject of an Anthony Wilder podcast. If you listen to the podcast at home, we hope you will be inspired to come to the museum to see this superb painting for yourself.

GD Leslie (1835-1921) was a well known Victorian artist who lived in Wallingford at Riverside in Thames Street between 1884 and 1891. He was an ardent lover of nature, and particularly of the River Thames and this painting depicts a scene on the riverside, probably at Pangbourne. It was exhibited at the Royal Academy in 1864.

The good news is that Wallingford's Guided Historic Town Walks have started again, **every Saturday morning at 11.00am from 16 April until 24 September**. There is no advance booking, so just meet the guide under the Town Hall in Wallingford Market Place at 11.00am any Saturday. The round tour takes approximately an hour and a half. The cost is £10 per person (cash only please) which includes an open season ticket to Wallingford Museum for 2022. All walk proceeds help to support this splendid volunteer-run museum.

Each walk is led by an expert guide from The Wallingford Historical and Archaeological Society, exploring the backstreets and bringing to life the history of the town and its buildings from Saxon times to the present day. To request special group tours and find out about all museum events, please visit [www.wallingfordmuseum.org.uk](http://www.wallingfordmuseum.org.uk)

### Museum Bookshop

We have an excellent selection of good second-hand books (both fiction and non-fiction) at sensible prices. We look forward to seeing you - it's free to browse!

### The Wallingford Historical and Archaeological Society

11 May (Weds) Melanie King: 'Can onions cure earache? Medical Advice in the 18th century'

8 June (Weds) Gabor Thomas: 'The Marlow warlord and the rediscovered church at Cookham: A review of early medieval archaeology of the Middle Thames'

[www.twhas.org.uk/meetings-programme.html](http://www.twhas.org.uk/meetings-programme.html)

Sue Wright, Wallingford Museum

14TH-22ND MAY



OPEN STUDIOS

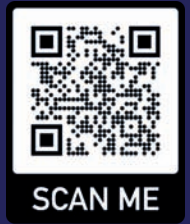


Open: 11am-4pm Thur & Sun / 11am-6pm Fri & Sat  
Closed: Mon, Tues & Weds

Ayres House Studios, Ayres Yard, Station Rd, Wallingford, OX10 0JZ

(Find us between the 'Esso' petrol station and 'Keri' the florist on Station Rd)

[www.ayreshousestudios.co.uk](http://www.ayreshousestudios.co.uk)



**Ever wondered what really happens in an artist's studio? Oxfordshire Artweeks is a great time to find out!**  
You'll find everything from paintings and pottery to installation and intrigue at Ayres House Studios this May.

Building on a successful Open Studios event last year, 15 professional artists and makers will be working from their studios, gallery and garden at Ayres House; a former rectory which the public can explore during Oxfordshire Artweeks.

Studio disciplines range from ceramics, painting, drawing, sculpture, video, sound, installation, mosaics, photography, print, textiles, upholstery, conservation and writing. So who knows what works you might witness being created on your visit!

The studios have had many new members join since last year, like artist and illustrator Hannah McCague, Rachel Ashman-textiles and print, Bob Pickford-pottery and Jackie Pearce- conceptual art and art therapy. So there is even more to be seen this year. Covid actually increased demand for studio space nationally as artists took the plunge and focused on their creative work fully.

*"It's great to hear the positive responses we've had from the public over the last year. Reviews have called us 'a hidden gem' and 'surprising', as in our 3rd year many local people have still yet to discover us tucked away on Ayres Yard. Last year's Artweeks really helped raise awareness of the local talent and creative services available at the studios, and we hope that this year does the same", says artist and studio manager Emma Souter.*

**Venue: Ayres House Studios, Ayres Yard, Station Road, Wallingford, OX10 0JZ.**

**Dates: 14th -22nd May • Open: 11am-4pm Thurs & Sun and 11am-6pm (Closed Mon, Tues, Weds).**

Find out more at [www.ayreshousestudios.co.uk/artweeks-2022](http://www.ayreshousestudios.co.uk/artweeks-2022)

This Open Studios event is part of the Wallingford Art Trail. Keep an eye out for posters, guides and maps to see more local talent in and around Wallingford!

## Follow the Art Trail this May!

**From Wittenham Clumps to Henley, in excess of 75 artists and makers from in and around Wallingford are throwing open their doors and welcoming you from the 14th-22nd May, celebrating 40 years of Oxfordshire Artweeks.**



There is a new 'Wallingford and Surrounding Areas' map designed to help plan your route and decide which of the studios, venues and exhibitors to visit. There is also a Google Map to help take you straight to the artist's door!

Oxfordshire Artweeks is the country's largest and longest running Open Studio event, open to young and old, professionals and amateurs.

*"Artweeks is superb for artists of all visual disciplines to share their joy of their craft to the public, who can be inspired to try it themselves or enjoy the artistry of ordinary people who love to draw, paint, pot, weave or sculpt, and visitors might even get a cup of tea and biscuit or a glass of wine. What's not to like?"* says Geoffrey Harcourt. The retired designer exhibiting in Benson is, at 86, a great ambassador of the benefits of art and life-long learning.

Details about all the artists and venues on the Art Trail can be found in the free Artweeks Guides and 'Follow the Trail' posters and maps. Keep an eye out locally or Scan the QR codes to get all the information digitally. We hope you enjoy visiting. All the venues are free and many are wheelchair friendly too.

Follow us on Facebook and Instagram @[wallingfordareaartweeks](https://www.facebook.com/wallingfordareaartweeks) and online at [www.artweeks.org](http://www.artweeks.org).

ART THEMEN CLARK TRACEY  
DAVE NEWTON ALINA BZHEZHINSKA  
VIMALA ROWE FLEUR STEVENSON BEN CUMMINGS



# JAZZ FOR UKRAINE

On Saturday 9th April Crowmarsh Jazz in partnership with the Corn Exchange presented an All Star line up of UK jazz musicians and helped raise over £3000 for the Ukraine DEC appeal.





## Mini and Junior Rugby



Sunday 10 September 10.00 am is the start of the new season for minis and juniors.

New players are welcome, just bring rugby boots, a mouthguard (U8s and up) and a water bottle.

The Minis and juniors are made up of 11 age ranges and are open to girls and boys.

For minis and Juniors, your child will join in with 3 training sessions, before you need to sign him or her up.

For more information, please go to the clubhouse a Sunday morning in September, where a club admin will sit at a table with a laptop, ready to take payments or answer questions.

Youth Contact is Paul O'Neill

You can email us at [rugbywallingford@gmail.com](mailto:rugbywallingford@gmail.com)

2022 Highlights - Our junior rugby hosted the county tournament for 13 teams on Sunday 27th May and were host to over 500 cars as teams travelled to the Hithercroft park for a Sunday full of competitions. Also our U15's girls team won the plate in their first ever season of full competition.

Facebook <https://www.facebook.com/WallyRugby>



## Cabin Pre School

I would like to introduce the Cabin Pre-School in Woodcote to you all.

Cabin was founded in 1974 by Rose Hunt in a bothy on Southcote Road for children of the Oratory staff. We have grown into a very different place now, and we have been in our current home on the site of Woodcote Primary School and Langtree School since 1986.



We care for children from all surrounding communities from the age of two, supporting their growth and learning until it is time to transition to one of the local schools. Our highly experienced, small team have been with us for years, and we provide a stable, caring and nurturing environment.

Last year, we were again awarded a 'Good' Ofsted rating, reflecting the pride we take in our curriculum. We focus on great behaviour, readiness for school, a love of reading and encouraging the fantastic imagination of our wonderful children. We usually theme our play activities with a book, letter or colour of the week and ensure that there is an activity for everyone's tastes.



We have two resident guinea pigs that are always looking for a cuddle especially if that means another carrot.

We offer term time hours, including funded 15 and 30 hours places and we have some availability left for the summer term. If you are looking for a small, family-oriented environment where every child is treated as an individual, please do consider becoming part of the Cabin family.

**Call for an appointment to look round on 01491 680854  
or email us for more information on [info@thecabinpreschool.co.uk](mailto:info@thecabinpreschool.co.uk).**

## Wallingford Parish Church Junior Choir

As restrictions on gathering and singing have relaxed in recent months, it has been great to have the juniors sing more often with the adult choir. This has meant dressing up in the red robes! When they sing for the Family service on the third Sunday of the month, the juniors are in more casual attire. We had a great turn-out for Mothering Sunday and, at the time of writing, are gearing up for Easter Sunday. The juniors are also very much looking forward to singing at a wedding, which will be the first one some of them have done.

Some of the more experienced juniors joined the adults for their performance of Stabat Mater and will also be part of the whole choir tour to Durham Cathedral in the summer. This will involve singing services in the cathedral for a week, while the cathedral choir are on holiday, so it will give them the experience of being a cathedral chorister – but without having to go to school!



The juniors are aged between 6 and 15. There are no auditions, and it costs nothing to join. All you need is a love of singing and willingness to learn new music. We meet in St Mary's Church at 7.00 pm on Fridays for 45 minutes, some staying for longer if singing with the adults. We have a catch-up, sing together and finish off with biscuits! A lovely end to the week.

[domwallingfordchoir@gmail.com](mailto:domwallingfordchoir@gmail.com)



# ENGLISH LANGUAGE LESSONS FOR THE UKRAINIAN COMMUNITY



There has been an amazing response to the Homes for Ukraine Scheme in Wallingford and the neighbouring South Oxfordshire Villages. The Old Counting House, a business in the town, is fundraising to provide English language lessons to help the Ukrainian community as they adapt to their new lives in the UK. The £10,000 fundraising target will pay for two native qualified teachers, who are also fleeing Ukraine, for three hours of teaching per day for four months, as well as essential educational supplies and IT resources. If the target is exceeded the Old Counting House will be able to extend the teaching time into other community areas as well as supply additional resources. The lessons will take place at the Old Counting House, 82e High Street, Wallingford and will start in mid-April.

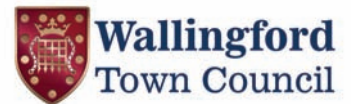
**To donate please visit [www.justgiving.com/crowdfunding/ukraine-teachers-oldcountinghouse](http://www.justgiving.com/crowdfunding/ukraine-teachers-oldcountinghouse)**

You can follow the fundraising progress on the Old Counting House Facebook page [www.facebook.com/OldCountHouse](http://www.facebook.com/OldCountHouse)

To attend the lessons please contact the Old Counting House, telephone **01491 528880** or email **info@oldcountinghouse.co.uk**

---

## Wallingford Town Information Centre



After a very mixed April weather-wise we have now passed Easter and the celebrations associated with it. Schools have gone back for their summer term.

As we approach May I am sure we are ready to welcome our long awaited Summer and the longer evenings. Now is the time for some pleasant evening and weekend strolls, maybe catching sight of the bluebells which abound in our area.

The whole of our County is preparing to celebrate the **Queen's Platinum Jubilee** next month.

Do ensure you diarise our local events and join in the fun.

The Town Information Centre will have information on what will be happening in our area.

Wallingford is welcoming quite a number of visitors to our town and we are proud to be able to offer them advice as to what to see and do in our local area, including how to get there. If you have visitors this summer do ask them to pop in for ideas.

We also have many items of new local merchandise on sale including prints and books by local authors.

A reminder also to local clubs and organisations that we have available space to advertise your summer fetes and events.

It's free and all we require is 2 A4 posters for our display window.

Tina, Sue and Anita

---

## Could you be a Volunteer Driver?

Typically you would be asked to drive people to medical appointments locally or to Oxford and Reading hospitals. We won't ask you to commit to a regular time or number of hours; we can work around other commitments and offer tasks to suit your lifestyle. Volunteers use their own cars and receive a mileage payment for each journey.

Every hour offered is valuable to us, whether it's 2 or 3 a month or several each week.

**For more information or to arrange an informal chat please contact the manager Sylvia Wear at [wallingfordvolunteerdrivers@gmail.com](mailto:wallingfordvolunteerdrivers@gmail.com)**



## Do you Need Help?

If you live in Wallingford or the surrounding villages, have no access to personal transport and are unable to use public transport we may be able to help. Our volunteers can drive you to medical appointments, wait for the duration of the treatment and then take you home. We also offer transport for visits to the optician, dentist, podiatrist and essential shopping.

**DO PLEASE GIVE US A CALL, 01491 836345.  
The office is in the Methodist Church and open  
Monday – Thursday 9.30 to 11.30**

# Paddocks Pre-School

Paddocks Pre-school  
Paddock Road  
Wallingford  
OX10 9LT  
[www.paddockspreschool.com](http://www.paddockspreschool.com)

A friendly preschool environment offering a wide range:

- Flexible sessions for 2 – 5 year olds
- Universal 15 hours funding for 2, 3 & 4 year olds
- Extended 30 hours funding for 3 & 4 year olds
- Large Garden & Forest School
- After school care available
- Holiday play schemes for 2-8 year olds



For more information or to arrange a visit, please call **01491 825333** Charity Number: 1001964  
or email [info@paddockspreschool.com](mailto:info@paddockspreschool.com)

# Tom Cottrell Landscapes

EST 1974 Family Run Business

Telephone: **01491 836974**

All tree aspects - Dave Cottrell

- Felling • Reducing • Reshaping
- Thinning, Removal • Pollarding
- Shrub & Tree Pruning • Dead Wood
- Removal Hedge Management
- Stump Grinding

Garden & Landscaping Services

- Turfing • Hedge & Grass Cutting
- Planting • Fencing • Patios
- General Garden Maintenance
- Garden Renovation & Construction
- Woodchip Mulch
- Seasoned Logs & Kindling Wood

[www.tomcottrelllandscapes.com](http://www.tomcottrelllandscapes.com)

Email: [tomcottrelllandscapes@gmail.com](mailto:tomcottrelllandscapes@gmail.com)

Orchard Cottage, High Road, Brightwell-cum-Sotwell, Nr Wallingford, Oxon OX10 0PS

## JIM PINK (WALLINGFORD) LTD

The Friendly Family Firm  
Serving the Motorist since 1960

NEW & USED CAR SALES • SERVICING ALL MAKES  
MOT CENTRE • AIR CONDITIONING SPECIALISTS  
TYRES • BATTERIES • EXHAUSTS  
CAR SALES • SERVICE CENTRE

Wood Street Garage, Wood Street, Wallingford

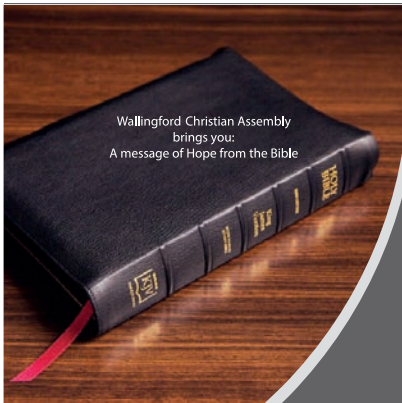
01491 836017

01491 836022

07342 630396

[www.jimpink.co.uk](http://www.jimpink.co.uk)

[info@jimpink.co.uk](mailto:info@jimpink.co.uk)



Wallingford Christian Assembly  
brings you  
A message of Hope from the Bible

Faith cometh by hearing and hearing by the Word of God (Romans 10:17, the Bible)

Join us online  
Every Sunday @ 17:00  
20 min message



We invite you to hear a short message  
from the Bible, available from the comfort  
of your own home.

To watch live:  
Zoom ID: 491 229 776  
Passcode: 316

Not able to join on a Sunday – [catch up on demand!](#)

@Wallingford Christian Assembly

@GodsGoodNews (God's Good News for South Oxfordshire)

Wallingford Christian Assembly  
[www.wallingfordchristianassembly.org.uk](http://www.wallingfordchristianassembly.org.uk)

# Londis

38 Sinodun Road, Wallingford

Tel: 01491 837932

Fruit & Vegetables

Beers & Wines

• Newspapers

• Magazines

• Mobile Top-up Vouchers

Plus the National Lottery

*best value locally*



Opening hours:  
Mon-Sat. 6.00am-8.00pm  
Sunday 6.30am-1.00pm

# SIMON THE STRINGER

Tennis and squash racket stringing across Oxfordshire and Berkshire.  
Collection and delivery available.

[info@simonthestringer.co.uk](mailto:info@simonthestringer.co.uk)  
[www.simonthestringer.co.uk](http://www.simonthestringer.co.uk)  
Tel: 07711 948 550



# Crosby Engineering

Latest Diagnostic Software  
All Makes & Models Serviced & Repaired  
Laser 4 Wheel Alignment  
MOT

Air Conditioning servicing

Free Local collection

Audi BMW Mercedes VW Specialist

Family Run Business In Wallingford Since 1980

**01491 834544**

Unit F The Croft  
Whiteley Road  
Hithercroft Ind Est  
Wallingford  
Ox109rg

customer care without compromise

**CHEQUERS GARAGE**



Fullers Road, Aston Tirrold,  
Oxfordshire OX11 9EN

[info@chequers-garagedidcot.co.uk](mailto:info@chequers-garagedidcot.co.uk)  
[www.chequers-garagedidcot.co.uk](http://www.chequers-garagedidcot.co.uk)

At Chequers Garage we look after our customers as well as their cars. That's why we have courtesy cars, offer local collection and delivery, explain your invoice in plain English and every car is washed before it is returned - not only will your car run well, it will look great too!

- MOT
- SERVICE
- TYRES
- AIR CON



the Good Garage Scheme

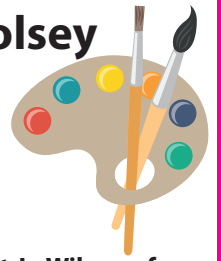
**Call today on 01235 850347**



# WOW WHAT'S ON! 2

## Local artists to run a major art exhibition at The Great Hall Cholsey

**Wallingford and District Art Club (WADAC)** club members are exhibiting as part of **Oxfordshire Art Weeks** from **13-15 May (10.00am-5.00pm, except Friday 13th, 1.00pm-5.00pm)** at venue **243** - the fabulous, light, and airy **The Great Hall at Cholsey Meadows**. View over 60 works using all painting media plus textiles and jewellery, created by over 25 WADAC club members - from commercial artists to skilled amateurs.



We are also holding **free art workshops** on **Saturday 14th and Sunday 15th from 10-11.30am**, run by **Cholsey artist Jo Wilson of "Art for All"**. They cover learning from the Masters: an oil paint on canvas workshop looking at reproducing small sections of paintings by Monet. These workshop are aimed at people of any level of ability, complete beginners welcome. The workshops are free but there are only 6 places available in each workshop, book early to avoid disappointment. To book email: [info@jo-wilson.co.uk](mailto:info@jo-wilson.co.uk)  
For more information: [www.artweeks.org/v/wallingford-district-art-club](http://www.artweeks.org/v/wallingford-district-art-club)

## Wallingford Chamber Music - the Summer Season Starts

To reflect its change of venue to St Mary's Wallingford, we've rebranded our summer chamber music series from 'Music at St Peter's' but all the good things remain - wonderful artists in their prime or up-and coming youngsters starting out on their professional career, presented by a band of local volunteers who give you excellent value for money.

At the first concert on 14 May, we welcome back the ever-popular Sacconi Quartet who are joined by clarinettist David Campbell for the sublime Brahms Clarinet Quintet, and other works by Rebecca Clarke and Arthur Bliss.  
Pianist Anita D'Attellis is next up on 4 June. Anita is increasingly well-known to local audiences thanks to her own series of Winter Recitals, and as accompanist to and soloist with Benson Choral Society. She gives a solo recital of Schubert, Grieg and Scriabin whose 150th anniversary it is this year.

**Both these concerts are selling well, so don't delay and get your tickets now. Buy online from our website [www.wcm.org.uk](http://www.wcm.org.uk). or for any queries email [tickets@wcm.org.uk](mailto:tickets@wcm.org.uk) or phone Jules on 07968 703709. Tickets are £18 or save over 30% with a season for £110. All concerts start at 8pm. There are extra benefits this year if you become a Friend, notably seat reservations - for this give me a call, Roger Morgan on 01491 837494.**

Jumble sales have not been possible in the last two years but this month there will once again be a chance to grab some great bargains.

**Doors will open to jumble hunters at 2pm on Saturday May 21st at Wallingford Methodist Church Centre.**

A plentiful supply of clothes, household goods and bric a brac will be on sale, as well as tea and biscuits to revive after the bargain hunting. Proceeds will benefit the church.

Thanks to all who supported our successful pancakes and big book sale in February. Close to £600 was raised which has been shared between Shelterbox, currently providing shelter to homeless Ukrainians fleeing the war, and Be Free YC, which supports young carers in South Oxfordshire.



Nicky Lidstone

## Wallingford Handbell Ringers

Wallingford Handbell Ringers are back now enjoying making music on handbells. We would welcome people who would like to try this way of making music that is greatly enjoyed by audiences and not just at Christmas.

We are ably led by Gay and Alan, the couple who charmed the nation by playing Titanic on Britain's Got Talent a while ago. Ringing a bell is not difficult and opens the world of all kinds of music: folk, popular, classical, hymns, international and, naturally, Christmas.

**Do come along and have a ring - we are sure you will be captivated by the sound of the bells! We would be delighted to see you at 4pm on Tuesdays in Cholsey. We continue to take anti-Covid precautions. If you are interested email Gay and Alan at [aeolianchimer@googlemail.com](mailto:aeolianchimer@googlemail.com) or call them on 07964 615428 (pm is best). More information is available at <https://wallingfordringers.wordpress.com>**

## Henley and District Stamp Club

Time is flying by, Spring has arrived in all its glory, and our meetings continue at Bix.

**Wednesday May 11th Barry Stagg will give a display on King Edward VIII**

**Wednesday May 25th AGM and members displays telling a story in 1 page**

Meetings are held the 2nd and 4th Wednesday of the month at Bix Village Hall at 7.30 p.m. Visitors and new members are welcome.

Further details can be obtained by phoning **01491 681739** or on our website: - [www.henleyphilatelic.org.uk](http://www.henleyphilatelic.org.uk)



**Wallingford**  
Town Council



**Town Hall**

June 2nd, 3rd, & 4th Time: 10:30-15:00

70 Years of Wallingford

David Beasley's collection of photographs

**Corn Exchange**

Friday 3rd June 14:30-16:15 & 19:30-21:00

"Elizabeth A Portrait in Parts"

Tickets from the Corn Exchange or on-line

**Wallingford Sports Park**

Friday 3rd June check their website

"A Day of Sports"



## Queens Platinum Jubilee Events in Wallingford

Thursday 2nd June to Sunday 5th June 2022

**Castle Gardens**

Sunday 5th June 11:30—15:30

"Picnic in the Castle Gardens"

Bring your own picnic, blanket, seating and a big smile 😊

Enjoy the live music, donkeys, and children's crafts

Children's Fancy Dress optional, let's have some fun together.....

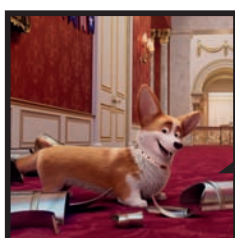


**Riverside**

Sunday 5th June 21:00 with Fireworks at 22:00

Finale for the weekend at the Riverside

with a lighted flotilla & fireworks



Look out  
for the Queens Corgi's  
around Wallingford



Use these # tags in social media posts #PlatinumJubilee #HM70 #wallingforduk Credit-Jacob King/PA Wire/PA Images

# Queens Platinum Jubilee Events in Wallingford

## 2nd – 5th June 2022



This year sees Her Majesty The Queen become the first British Monarch to celebrate a Platinum Jubilee - marking 70 years on the throne.

There will be celebrations as communities and people come together to celebrate Queen Elizabeth II's historic reign.

Wallingford will be hosting a number of events around the town whilst communities across Wallingford are encouraged to take part in the celebrations by hosting events to mark this momentous occasion.

You can follow our dedicated webpage to find out all the events and details about the Platinum Jubilee in Wallingford The Queen's Platinum Jubilee 2022 | Wallingford Town Council

Councillor Ros Lester said "Have you heard the rumour? The Queen may have lost a few of her pet corgis, we may need the children of Wallingford to seek them out, more on that later.

Please come and make our Picnic in the Castle Gardens a community and family event, children there will be lots for you to do and even more corgis to find.

The Town Council have also funded a commemorative coin for each child at primary school, you will receive these before half term.

I would like to thank the team at Wallingford Town Council for all their help and support".

Mayor Marcus Harris said "I would like to thank Ros and the organising committee for pulling these fantastic events together for the community of Wallingford to celebrate this historic jubilee and to hosting The Mayor and his family from our twinned town Luxeuil le Bains in France"

## GG Wildlife Experience

**What does WoW bring to mind? Well of course, the brilliant Window on Wallingford publication – but for us at GG Wildlife Experiences that's also "Wildlife of Wallingford" – our new circular route starting in April from Wallingford centre.**

Steve Gozdz, the owner is an experienced Wildlife Photographer and wildlife expert, who has been running tours across The Chilterns for 2 years now and is starting his first guided walk starting direct from the town centre!

"Wallingford is a fantastic location; a bustling market town, but just steps away is the wildlife rich banks of the River Thames. This new route, which takes in both sides of the Thames as well as a new local nature reserve, will allow guests both local and from further afield to see and learn about the variety of wildlife along the route.

In the last few weeks, we have had Kestrels hunting, Kingfishers fishing, Skylarks singing up high, Muntjac, Roe deer, Grass Snakes and many other species... and with the arrival of migratory birds back from their African winter holidays we will see so much more as we begin the breeding season.

Steve publishes his photos on both his Facebook and Instagram pages, as well as on his website – so it's easy to get a feel for the kind of wildlife you might get to see – in some cases up close and personal too! Alongside guided wildlife walks, he runs boat trips and wildlife photography sessions; already this year there has been Kingfisher Photography, Birds of Prey Photography, Owl Photography and Firecrests too.

*"It's amazing how much joy people experience when really being out with nature and seeing and hearing what's around them. You don't have to be a real enthusiast or an expert to enjoy one of our experiences, and it's a great way to spend time with family or friends too".*

**Readers of WoW will receive a 20% discount on their first booking with the code WOW\***

\*Not to be used in conjunction with any other offer or membership



**REACHING FOR THE STARS!**

Childcare Choices  
WE NOW OFFER TAX-FREE CHILD CARE!

**Stagecoach Wallingford**  
Singing, dancing and acting classes for 4 - 18 year-olds

stagecoach.co.uk/wallingford  
01235 390 810  
Wallingford School, OX10 8HH

**STAGE COACH**  
Creative Courage For Life!

TRAFFALGAR ENTERTAINMENT COMPANY

YouTube

**St Mary's & St Leonard's Wallingford**  
*open to God, open to all*

**8am St Leonard** – Holy Communion  
**10am St Mary-le-More** – Parish Communion with Children's Church, All Age Worship or Family Service (also live-streamed)  
**6.30pm St Leonard** – Evensong

**www.marylemore.co.uk**

Team Rector: The Revd David Rice Tel: 01491 202188

**Wallingford Tyres & Exhausts**

**FRIENDLY, PROFESSIONAL SERVICE AT COMPETITIVE RATES**

PHONE: (01491) 824145 FOR A QUOTE  
or call in at: AYRES YARD, STATION ROAD, WALLINGFORD, OXON.  
OR BY APPOINTMENT OUTSIDE WORKING HOURS

**Mon-Fri. 8.30 a.m.-5.30 p.m. Sat. 8.30 a.m.-1.00 p.m.**  
*(Just past the Esso Garage on the way to Didcot)*

**Have you a Lasting Power of Attorney for Finance and Health?**

**HELP-PEN-HAND**

Learn about LPAs for just £35. Then you can do it yourself – if daunted, I'll help you. Val Wolsey

01491 836820 | HelpPenHand@gmail.com

**LOVE HAIR? LOVE FASHION? BE A HAIRDRESSER**

**Apprenticeships available now!**

**FORRESTERS** Call Forresters: **01491 837 523**  
Drop in: **25 High Street, Wallingford**

**Forresters4hair.com** Apprenticeships

**Dr. A. Ratti BDS (Hons) Kings College London**

**ST MARY'S DENTAL PRACTICE**

**New patients welcome**  
Affordable quality private dental service from a caring team

**New maintenance plan available from Jan 2018**  
Call for more information

**01491 825 252**  
**www.stmarysdental.co.uk**

**Mum and baby/toddler fitness classes running in Cumnor, Didcot, Wallingford & Oxford**

Contact Jen to book your free trial

www.mumtomumfitness.com  
07771 848387 | jen@mumtomumfitness.com  
mumtomumfitness @mumtomumfitness

**THE WALLINGFORD BOOKSHOP**  
10C ST. MARTIN'S STREET  
WALLINGFORD, OXFORDSHIRE OX10 0AL  
Telephone / Fax: 01491 834383  
Email: books@wallingfordbookshop.com

We offer friendly informed assistance and an excellent range of books, audios and fine art stationery.

Many titles not stocked can be obtained within 24 hours.

**This month, Home Instead Maidenhead, Henley & Wallingford are celebrating 10 years of supporting people in the Wallingford area. The award-winning company with their team of over 80 Care Professionals support clients, young and old, to live safe and well in the place they want to be ...their own home.**

Today, with busy lives and families often not living locally, support from a trusted, established company is more important than ever. For many, retaining that sense of independence by staying at home surrounded by those special belongings and memories, receiving that little extra support, is a comfort.

Home Instead services include companionship support, such as trips out to local garden centres or clubs, assistance with everyday household chores like laundry, shopping and meal preparation, ensuring people eat well balanced meals. They can also support with personal care needs, such as assistance with washing and dressing. Anything required to live well at home.

Support is hourly perhaps just a few times a week, through to live in care, all tailored to the clients needs. Respite or short-term support whilst recovering from an operation is also an option. Clients see the same Care Professional at the same agreed times, so a trusting, supportive relationship develops – many clients and their families say their carer feels like one of the family!

If you would like to train as a Care Professional and support local people in Wallingford, Home Instead are recruiting so contact Gillian for an informal chat. No experience necessary (only a kind heart) as full training given. Hours are part time/flexible, fitting around other commitments or family life.

So if you are looking for reliable, trustworthy care at home, or for a rewarding role that brings a smile to someone's face every day, contact Home Instead. To us its personal...



**Home Instead Maidenhead, Henley & Wallingford**  
**Tel : 01491 877 132**  
**[www.homeinstead.co.uk/Henley](http://www.homeinstead.co.uk/Henley)**



**Home Instead**  
*To us, it's personal*

Live well,  
*your way*  
with Care at Home

**Last month the editor was kind enough to print our Logo in the colours of the Ukrainian flag as a small gesture of support for that country.**

**We have reached that time of the year when we review our progress and prepare for the Annual General Meeting in May.**

**This year is the 40th since the birth of the u3a movement and we shall celebrate that at the same time.**



A bigger milestone this year is H M the Queen's platinum anniversary and we hope to celebrate this at our annual garden party in August.

April was our membership renewal month and it's too early to say how successful that has been; however we've had more than seventy new members in the year up to the end of March. Perhaps this shows how much people need the opportunity to socialise after the two years of caution and self-isolation which many of us have had to practice.

Our speaker in March was the curator of the exhibition "Last Supper at Pompeii" at the Ashmolean museum who gave us a fascinating talk on Roman food as well as the famous eruption of Vesuvius. April's talk by James Taylor was about "Darwin and The Beagle"; and in May the wildlife photographer Tom Way's talk is called "Tooth, Claw and Mane". This will discuss exciting moments photographing subjects from tigers in India to wild horses in the Camargue.

Our outing to Cirencester and the Corinium Museum was a good complement to the talk on Pompeii and was followed by a visit to the Bathurst Estate and Cirencester Park. Our tour of the house was given by Lady Bathurst herself and included excellent tea and cake.

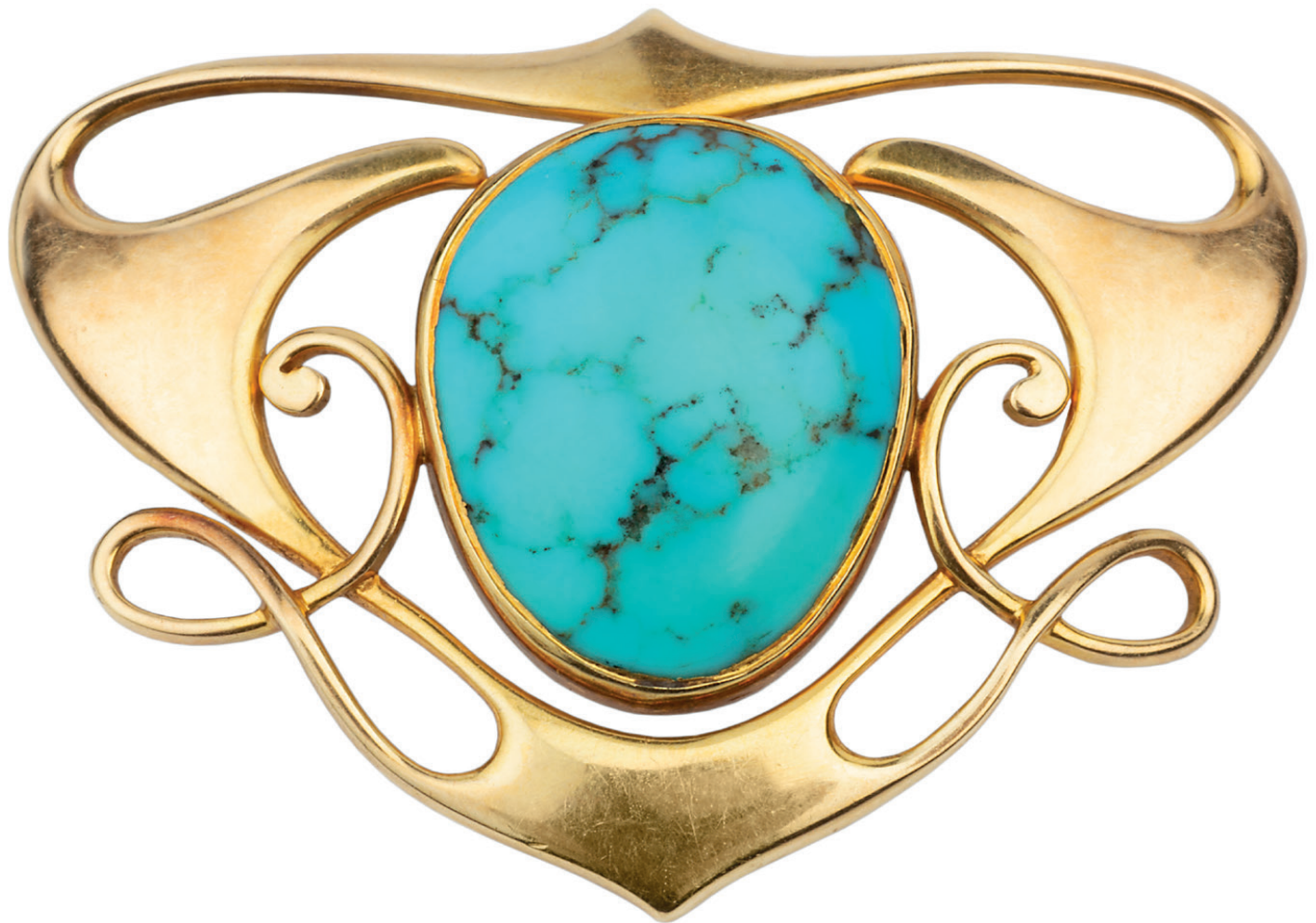
The trip in April was to the Brighton Pavilion and in May we hope go to the Watercress Line. Our holiday in Ireland in September is almost full with just a few spaces left. Lastly, in June there will be another journey to London; this time to the Regents Canal and Camden Market.

In addition to speaker meetings and outings our groups are doing well and our monthly coffee mornings in Centre 70 are always busy. More information on our activities is on our website **[www.wallingfordu3a.org](http://www.wallingfordu3a.org)** where there is a contact form to enquire about joining us.

Neil Kelly (Deputy Chairman)

# Thinking of selling your Jewellery?

**Mallams**  
1788



Mallams' specialist Louise Dennis FGA DGA, is available to give **free** confidential valuations on any piece(s) you are considering selling at auction.

**Home Visits also available**

Enquiries: 01865 241 358 or [louise.dennis@mallams.co.uk](mailto:louise.dennis@mallams.co.uk)  
[www.mallams.co.uk](http://www.mallams.co.uk)

# When did you last have your gutters cleared out?

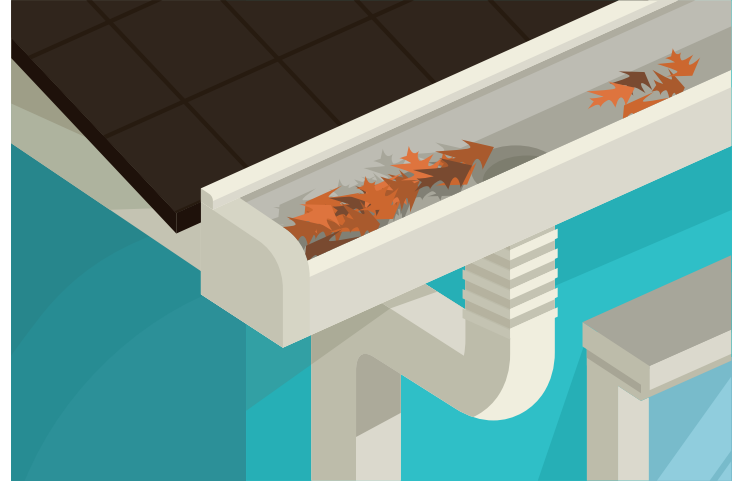
Gutter health is an often-overlooked part of your home maintenance plan, but gutters perform an important function in protecting your home.

**Axa, the world leading insurance company, suggest that gutters require at least an internal inspection every year and clearing out if they are clogged. Blocked gutters can lead to brick damage, wood rot and even damp issues on the internal walls of your home.**

Local GutterPRO expert Gary King says "Contrary to popular belief moss not leaves are the major cause of gutter blockages. So even if your property doesn't have trees in the immediate area there may still be a problem building up. Moss does a great job of falling from your roof when it rains and then swelling up in your guttering. The moss breaks down and provides a great medium for weeds and grass to germinate which will prevent water running freely in the gutters and into down pipes.

GutterPRO are able to clear gutters from the ground using a powerful vacuum system with super lightweight carbon poles. Because of the length of the poles GutterPRO can reach over your conservatory where it would be impossible to place a ladder safely. This means that not only is there less risk of falling off a ladder there is less risk to your property.

Gary says "for your peace of mind we use a camera system on an extendable pole that enables us to clearly show your 'Before and After' photos of the work that we have completed for you. If your gutters are clear then there is **NO CHARGE** for the call out. All of our jobs are booked in for a timed appointment so you know exactly when we are coming"



GutterPRO recently introduced a Gutter Washing service which removes the black and green marks and dirt from the UPVC gutters and fascia boards giving homes a fresh new look and much improved kerbside appeal.

Gary continues "We are seeing people getting a Clear and Clean before putting their properties on the market. People don't want to see grass growing from gutters or dirty gutters on estate agents photos"

**GutterPRO has over 13,000 5-star reviews at reviews.co.uk. GutterPRO can be reached at 01491 815350 or visit the website at gutterpro.co.uk.**

Is it time you took a closer interest in your gutters before Spring?

---

## Wallingford Country Market

every Friday in St. Mary-le-More Church between 9.30 a.m. - 12 noon.

Our Annual 'Outside Market' coincides this year with the **Queen's Platinum Anniversary celebrations on Saturday, 4th June. It will be held in the Market Place between 9.00 a.m. – 12.30 p.m. and will replace our usual Friday market on 3rd June.**

This market will feature competitively priced home-grown plants for bedding, baskets and borders as well as delicious home-baked items, preserves, local honey and, weather permitting, crafts. Orders can be taken for most items we sell.

We are always looking for new producers. If you enjoy baking, gardening or making craft items do come and join us – it is not necessary to turn up every week.

**Please phone Alison: 01491-681596 or Sandra: 01491-836527 for further information, or visit the market one Friday morning.**



Busy Baskets Nursery trading as:



**250 varieties and colours of basket & patio plants all grown on the nursery**

**Purely Plants**

Seasonal Opening: April-July & September-November  
7 days a week - See website for details

e: andy@purelyplants.co.uk 01491 833 831 w: www.purelyplants.co.uk  
Purely Plants Nursery, 142a Wantage Road, Wallingford, Oxfordshire OX10 0LU

HANGING BASKET SPECIALISTS  
BEDDING & CONTAINER PLANTS  
VEGETABLES & HERBS  
PERENNIALS, CLIMBERS & SHRUBS

**The CABIN** Pre-School

www.thecabinpreschool.co.uk

Reading Road  
Woodcote, RG8 0QY

- Within primary school grounds
- Flexible sessions for children aged 2—5 years
- Government funding for 2, 3 & 4 year olds
- Term Time 8:30—15:30

01491 680854 info@thecabinpreschool.co.uk

Registered Incorporated Charitable Organisation: 1164579

**THE COOKHOUSE — DELI — WALLINGFORD**

We supply traditional delicatessen styled goods, varying from speciality store cupboard ingredients all the way through to indulgent treats in local cheeses, locally brewed ales and perfect accompaniments to help create the perfect family kitchen.

14 Market Place, Wallingford OX10 0AD

**GRAPE MINDS**

Hand-selected wines, spirits and beers



- Free delivery for 6 or more bottles
- Party services (sale or return, free glass hire & more)
- Friendly advice
- Tasting evenings
- 500+ different bottles
- Wine open to try

10 St Martin's Street, OX10 0AL 01491 824549  
www.grapemindsdrinkalike.co.uk

**Manor Café at Howbery**  
Open: 9am-4pm, Mon-Fri



- Hot and cold drinks, homemade cakes: all day
- Breakfast: 9.00am - 10.30am
- Paninis, baguettes and baps: 11.00am - 2.00pm
- Hot and cold lunch options: 11.30am - 1.30pm

Order online or at service counter | Outside and indoor seating areas  
Takeaway service | Beautiful grounds | Ample parking

[www.howberypark.com](http://www.howberypark.com)

**WALLINGFORD TEA & COFFEE**

We roast High Grown Coffees and we stock Quality Teas together with a range of Herbal beverages and Spices plus a wide variety of Tea and Coffee accessories



Wallingford Tea & Coffee Company Limited  
6a St. Martin's Street  
Wallingford, Oxon. OX10 0AL  
Telephone: 01491 836263  
kitchtea@gmail.com

THE GEORGE

**TAVERN**  
BAR + KITCHEN

**£10 Special**



**Moules-frites £10**

High Street - Wallingford - Oxfordshire - OX10 0BS  
e-mail: info@george-hotel-wallingford.com



# WALLINGFORD WINE OF THE MONTH

## La Boheme Syrah Gamay

**This month, I'm highlighting a truly unusual wine, that has extremely classical influences. Named after a Puccini opera, and with a label expressing elegant 19th Century opulence, the only external evidence of Aussie influence is the fact that they've eschewed a cork in favour of the reliable screw cap.**

Gamay is the elegant grape beloved in Beaujolais, and it's rarely seen outside France. Syrah is grown the world over, but in Australia in particular it's almost exclusively known by Shiraz, and as a rule it's as subtle as a kick from a kangaroo. In contrast, the sensibilities of this wine are determinedly old world: this isn't a purple fruitbomb, nor a 15% ABV powerhouse, but rather a slightly translucent ruby red wine, with an elegant nose and a restrained 13.5% alcohol.

So if this wine is playing to the European style, why not simply choose a European wine? While I've emphasised how un-Australian some of its character is, this is a wine that could never have come from Europe. The reason I love it, is that it uses French winemaking techniques to show off the excellence of the Australian terroir in a way that is almost unique. Using some whole bunches in the fermentation emphasises the freshest fruit flavours and preserves the most delicate aromas that are often lost when crushing the grapes. Finishing the wine in large barrels helps the flavours to integrate, and adds the faintest toasty hint to the backbone of the wine. It's made with such a light touch that it tastes effortless; everything is wonderfully balanced.

The Yarra Valley is cool by Australian standards, so the grapes retain their freshness, but the long days of sunshine they are exposed to mean the tannins are softened to the texture of silk. Here we see the balance of strawberry and cherry fruit with silky smooth mouthfeel, and a clean, elegant finish that entices the drinker to another sip.

For wine geeks, it's a combination of flavour and structure that is unfamiliar and intriguing. For the casual drinker, it's a red wine that is light enough to serve with white meat or salads, and even to chill a little if the weather is warm. For me, it's the perfect summer red combining complexity of flavour with a refreshing lightness. Next time you're tempted to a glass in the sunshine, I recommend you try this unusual classic. Cheers!



**Wine Name:** La Boheme  
**Producer:** De Bortoli  
**Grapes:** Syrah, Gamay  
**Region:** Yarra Valley, Australia  
**Exclusive Price:**

£13.99\*/bottle until the next issue.



**\*Mention WOW in store!**

**The Queen's Platinum Jubilee**  
1952 - 2022

**All things British Beer & Cider Festival @ The George Hotel Wallingford**

**Live Music, 2 days**      **3rd + 4th June**

**TAVERN**  
BAR + KITCHEN

High Street - Wallingford - Oxfordshire - OX10 0BS  
e-mail: info@george-hotel-wallingford.com

# Café Delorme

Fresh ground coffee and drinks

Doughnuts and pastries baked fresh daily

Takeaway menus with weekly specials Wed - Sat to order

Dining In from end June

Authentic French Bistro Evenings one Friday each month

**f Book on Facebook or 01491 651088**

Café Delorme, 2 The Pound, Cholsey OX10 9NS

## The Little Artichoke

Experienced local chef available for event catering, from BBQs & buffets to fine dining dinner parties

- We specialise in shellfish, but our capabilities are endless
  - We have an extensive menu & weekly specials
- We also have various cooking classes now running, from Lobster Thermidor to Beef Wellington

Contact Jason or visit website for further information  
07960 974057 | thelittleartichoke@outlook.com | www.thelittleartichoke.co.uk

## Avanti ITALIAN

RESTAURANT



Dining In  
Takeaway  
Delivery Service

Tuesday to Saturday

Order online  
[avantiitalian.com](http://avantiitalian.com)  
or call 01491835500

## SUNDAY ROAST

SHILLINGFORD BRIDGE



2-Course Roast

Join us on the River Thames at Shillingford Bridge Hotel!



@shillingfordbridgehotel

Shillingford Bridge Hotel,  
Wallingford, OX10 8LZ

E: [reservations@shillingfordbridge.co.uk](mailto:reservations@shillingfordbridge.co.uk)

T: 01865 858567

**£19.50**  
per person



Shellfish Cow  
Restaurant & Bar

28 High Street  
Wallingford

[www.shellfishcow.co.uk](http://www.shellfishcow.co.uk)

01491 832 807

[wallingford@shellfishcow.co.uk](mailto:wallingford@shellfishcow.co.uk)



EST. 1995

## Mr & Mrs Park's

FAMILY BUTCHERS

High welfare local produce

Knowledgeable and friendly service

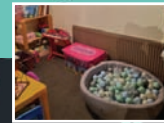
A great range of local cheese, wines and much much more.

Check out our website or follow us on Facebook or Instagram to learn more.

5 The Pound, Cholsey, Wallingford, Oxfordshire, OX10 9NS  
01491 651300 • [info@mrandmrsparks.co.uk](mailto:info@mrandmrsparks.co.uk) • [www.mrandmrsparks.co.uk](http://www.mrandmrsparks.co.uk)

## COFFEE CULTURE

Where children can play and you can relax



GOOD COFFEE | SOFT PLAY AREA | GREAT FOOD

**OPEN TUESDAY TO FRIDAY 9.30AM - 3PM**

Royal Standard · 32 St Marys St · Wallingford OX10 0ET

GREAT FOOD, FINE LOCAL ALES AND A WARM WELCOME AWAIT AT THE ROYAL STANDARD PUB, ALONG WITH SKY AND BT SPORTS SO YOU CAN FOLLOW ALL THE LATEST SPORTS ACTION

**PROBABLY THE BEST SUNDAY ROAST IN TOWN!**

CALL 01491 599105  
[ROYALSTANDARDWALLINGFORD.CO.UK](mailto:ROYALSTANDARDWALLINGFORD.CO.UK)



ROYAL  
STANDARD

**WALLINGFORD'S ROYAL: ANYTHING BUT STANDARD!**

**The Red Lion is a beautiful 16th Century thatched pub in the centre of Brightwell-cum- Sotwell. Corinne and her partner Mouse (aka Steve) took over the pub just two months before the first lockdown in March 2020 and be-  
reft of customers they turned their attention to produc-  
ing a fantastic take away menu, starting just one night  
a week but soon expanding to four nights as they were  
getting so much demand from their village community  
and also from Wallingford, Didcot and Cholsey residents.**

Since life has returned to near normality, they have been able to open up the pub again and are as busy as ever. Their warm welcome to everyone and their simple and honest cooking of pub favourites and classic dishes has created a popular hub in the village. They hold a Jazz Jamming session on the third Sunday of each month, where people can just turn up and play (6.30 – 8.30 pm) and once a month a u3a art group set up in the back of the pub to work on watercolours and drawings. A weekly meat draw with meat supplied from a local butcher, just £1 a ticket, is popular every Sunday at 6.00 pm, and once a month the pub hosts a Quiz Night where anybody can put on a quiz for charity.



My husband and I visited one night last week for dinner. Having already enjoyed their takeaway menu last year, we were keen to try the dinner menu inside the pub this time. My son had told me that the puddings are special at the Red Lion, so I opted for a main course and pudding while my husband ordered a starter of Boxed Baked Camembert served with onion jam and warm crusty bread. The Camembert was lovely and gooey, so I helped him out with a dip or three of bread! My main course was one of the evening's specials – lamb leg steak with a mix of vegetables, potato cake and lamb bon bons, which were small balls of shredded lamb with mint in deep fried breadcrumbs, served with gravy. It was delicious and a very generous portion. A carafe of water with ice and a slice of lime was put on the table. It is so welcome when you don't have to pay extra for water. I ordered a glass of Rioja and my husband had a choice of different local beers from Loddens Brewery, Amwell Springs and White Horse Brewery. He tried one of the Amwell Springs beers, Stay Jammy, which went well with his Home Made Steak and Ale Pie.

Other main courses on the menu included some classic dishes such as Red Lion Cheeseburger, Chicken Kiev and of course Fish and Chips. As promised by my son, my dessert of After Eight Cheese Cake was divine! It really did taste like an After Eight mint, one of which topped the cheese cake. Every day they have a selection of several puddings including Sticky Toffee Pudding, a Tart of the Day, a Cheese cake, Sorbets and Ice Creams and a Cheese board. I may pop in just for a dessert next time I'm passing! We really enjoyed our evening and will return again to try some of the other dishes on the menu particularly as this week they have introduced their new Spring and Summer menu – and they are still doing the popular takeaways!




**Red Lion**  
Brightwell cum Sotwell

Corinne & Mouse Welcome you.  
*Pop in and Say Hello*

The Street, Brightwell-cum-Sotwell, Oxfordshire OX10 0RT  
01491 837 373  
www.redlionbrightwell.co.uk  
FB: RedLionBrightwellcumSotwell



Lunch served 12-2 Wednesday to Saturday, and 12-2.30 Sunday  
Dinner served 6-8.30 Wednesday to Saturday  
[www.redlionbcs.co.uk](http://www.redlionbcs.co.uk)

**CRANFORD HOUSE**

Excellence in Independent Education for Boys and Girls aged 3-18  
[www.cranfordhouse.net](http://www.cranfordhouse.net)

Book your **PERSONAL TOUR** Welcome!

# Come and join us!

Discover what makes Cranford an extraordinary start to school life  
*Specialist teaching, excellent facilities and outstanding pastoral care.*

## HAVE TROUBLE WITH YOUR TREES?

NEED SOME HELP? ASK THE EXPERTS

- Tree removal
- Tree thinning
- Stump grinding
- Hedge trimming
- Tree pruning
- Tree felling
- Landscaping
- Fencing

We are city & guilds nptc qualified and insured you can feel safe dealing with us.

Call now to see how we can help Free no obligation quote

# 1st CLASS TREE SURGEONS

E. quote@firstclasstreesurgeons.co.uk

T. 07889 881 525  
[firstclasstreesurgeons.co.uk](http://firstclasstreesurgeons.co.uk)



## TUNELESS CHOIR

*singing like no one is listening*

Tuneless Choirs are for those who have always been told they can't sing in tune but LOVE to do it anyway!




### WALLINGFORD TUNELESS CHOIR

**Singing in person every Thursday evening**

St Mary-le-More Church, Market Place, Wallingford, OX10 0EG  
 Registration starts from 7.45pm. Singing starts at 8pm.



Price: **£10** the first time you attend for all new members  
 (Includes registration, song book and singing session)  
**£7 pay as you go**  
 or **£5** per session when booking an 8 week block

Contact us:  
**Tracy Noble on 07843 144737**  
[wallingford@tunelesschoir.com](mailto:wallingford@tunelesschoir.com)  
[www.tunelesschoir.com/wallingford](http://www.tunelesschoir.com/wallingford)

# WEPS

WALLINGFORD ELECTRICAL & PLUMBING SUPPLIES

**OPEN TO THE TRADE & PUBLIC**

☎ **01491 827825**  
 ✉ [SALES@WEPS.ORG.UK](mailto:SALES@WEPS.ORG.UK)  
 UNIT 1 MOSES WINTER WAY



## KJ MOBILE HAIR

*Katie Drew*  
*Cutting Technician*

Phone/Text 07730400595  
 Email: [kjmobilehair86@googlemail.com](mailto:kjmobilehair86@googlemail.com)



# HAYNES

Car Care Centre  
 servicing...batteries...tyres...fantastic value  
 Bushells Business Park, Lester Way,  
 Wallingford Oxon OX10 9DD  
[www.haynes-car-care.co.uk](http://www.haynes-car-care.co.uk)

- All Makes Servicing and MOT's
- Parts & Accessories
- Air Con Re-Gas
- Courtesy Car
- Batteries & Tyres
- 4 Wheel Laser Tracking



Proud Sponsors of Wallingford Vehicle Rally & BunkFest

# 01491 836 097