



**HOMEBASE**  
PROPERTY  
— SALES • MANAGEMENT • LETTINGS —

We'll  
get you **MOOVING**





**KJ MOBILE  
HAIR**

*Katie Dnew  
Cutting Technician*

Phone/Text 07730400595  
Email: [kjmobilehair86@googlemail.com](mailto:kjmobilehair86@googlemail.com)



Wallingford Christian Assembly  
brings you:  
A message of Hope from the Bible

Faith cometh by hearing and hearing by the Word of God (Romans 10:17, the Bible)

**Join us online**  
Every Sunday @ 17:00  
20 min message

To watch live:  
Zoom ID: 491 229 776  
Passcode: 316


Not able to join on a Sunday – catch up on demand:

 @Wallingford Christian Assembly  
 @GodsGoodNews (God's Good News for South Oxfordshire)

Wallingford Christian Assembly  
[www.wallingfordchristianassembly.org.uk](http://www.wallingfordchristianassembly.org.uk)

**Londis**  
38 Sinodun Road, Wallingford Tel: 01491 837932

Fruit & Vegetables • Newspapers • Magazines  
Beers & Wines • Mobile Top-up Vouchers  
Plus the National Lottery



*best value locally*

Opening hours:  
Mon-Sat. 6.00am-8.00pm  
Sunday 6.30am-1.00pm



**Illumin-Nation Ltd**  
5 St Peters Place, St Peters Street  
Wallingford, Oxon OX10 0BG

[allan.pridde@btconnect.com](mailto:allan.pridde@btconnect.com)  
[www.illumin-nationltd.co.uk](http://www.illumin-nationltd.co.uk) 01491 833505

**Wallingford Methodist Church**  
St Leonard's Square  
[www.wallingfordmethodistchurch.org.uk](http://www.wallingfordmethodistchurch.org.uk)

**Sunday Worship 10.30 am and 6.30 pm.**  
**Junior Church and Creche at 10.30 am.**  
EVERYONE WELCOME

**Thursdays 10.30 - 12.00**  
Call in for coffee and a chat

For details of other activities, including mid-week prayer & house groups, please contact our minister, Rev. Jocelyn Bennett  
Telephone: 01235 813242

Dr. A. Ratti BDS (Hons) Kings College London

**ST MARY'S DENTAL PRACTICE**

New patients welcome  
Affordable quality private dental service  
from a caring team  
New maintenance plan available from Jan 2018  
Call for more information  
**01491 825 252**  
[www.stmarysdental.co.uk](http://www.stmarysdental.co.uk)



**Do you, or a loved one, require support at home?**

Q1Care prides itself in offering 'high quality' home care to enable people to stay safe and independent at home. We offer as much, or as little, support as required. From *companionship, practical help, through to complex needs.*

**Work with us?**  
Become a valued employee, join a team that cares and make a difference to your community. Please email: [heloise.slater@q1care.co.uk](mailto:heloise.slater@q1care.co.uk) for more information.



**Home Care across West Berkshire & South Oxfordshire**  
Email us: [info@q1care.co.uk](mailto:info@q1care.co.uk) / [heloise.slater@q1care.co.uk](mailto:heloise.slater@q1care.co.uk)  
Call us: 0118 932 3865  
Visit us: [www.q1care.co.uk](http://www.q1care.co.uk)

Inspected and rated  
**Good**  
Care Quality Commission







## Welcome to your community magazine

To advertise in Window on Wallingford please contact us on: [info@windowonwallingford.co.uk](mailto:info@windowonwallingford.co.uk)

### Adverts:

Must be sent in JPEG or PDF formats in their highest quality.

### Advert sizes:

- 95 mm x 53 mm
- 95 mm x 110 mm
- 192 mm x 50 mm
- 210 mm x 297 mm
- 210 mm x 148 mm

### Articles:

Supplied in MS word. Please provide any photos or images including logos separately (jpeg files) that you would like in your article.

**Deadline date to submit: 7th March**

**Editor:** Naomi Reddyhoff

[info@windowonwallingford.co.uk](mailto:info@windowonwallingford.co.uk)

**Marketing, Accounts & Administration:** Jessica Dovey

[jess@windowonwallingford.co.uk](mailto:jess@windowonwallingford.co.uk)

**Distribution:** Naomi Reddyhoff

[info@windowonwallingford.co.uk](mailto:info@windowonwallingford.co.uk)

**Advertising Sales:** Lesley Longden

[lesley@windowonwallingford.co.uk](mailto:lesley@windowonwallingford.co.uk)

**Cover Photo:** Steven Gozdz of GG Wildlife Experiences.

 [@windowonwallingford](https://www.facebook.com/windowonwallingford)

 [@window\\_on\\_wallingford](https://www.instagram.com/window_on_wallingford)

Whilst every effort is made to ensure the accuracy of information printed in the magazine, the Editor and Publisher do not accept any responsibility for the consequences of any errors that may occur. Material published in the Window on Wallingford Magazine is copyright, but normally the Editor will be pleased to grant permission for it to be reproduced, if asked on each occasion. The opinions published in this magazine are not necessarily those of the Editor, Publisher or WoW.

Adverts will continue to run unless cancelled.

Hi Everyone

Spring is nearly here, thank goodness, after such a long and dark winter. We hope you like the mad "March Hare" on the front Cover, supplied with kind permission from Steven Gozdz of GG Wildlife Experiences.

Don't forget to spring your clocks forward one hour on Sunday 27th of this month.

Things are very much getting back to normality, which I feel is great for us all. More clubs and groups, Knit & Natter, Art, Gardening, Markets, Coffee Mornings, etc are opening back up which is great for our "What's On" Section in the magazine.

It has been very difficult keeping this going during Covid with everything being shut and nothing going on for us to report!! If you know of any new or exciting clubs or groups, please tell us about them so they can go in the "What's On" Section.

There are some interesting new articles in the magazine, Wallingford Chamber of Music is back, Oxfordshire Wildlife Rescue, Wallingford Community Hospital League of Friends, what's happening at the Wallingford Museum. Lots of interesting things to do and get involved with, in our fabulous town.

We are still looking for a couple of delivery volunteers, so if you have an hour to spare a month, please contact us.

[info@windowonwallingford.co.uk](mailto:info@windowonwallingford.co.uk)

Have a fabulous month of March.

Stay safe, have fun

Naomi x



**WE NEED YOU!**

We are needing some new volunteers, distributors, and deliverers, so if you have a couple of hours spare each month, please get in contact with us.

[info@windowonwallingford.co.uk](mailto:info@windowonwallingford.co.uk)

WINDOW ON WALLINGFORD  
**WOW**



**Sunshine Painting & Decorating**

**LANCE THOMPSON**  
FRIENDLY RELIABLE SERVICE

*For All Your Decorating Needs*  
*Call For A Free Estimate.*  
**07780 221950**

[lance.sunshine@btopenworld.com](mailto:lance.sunshine@btopenworld.com)      [www.sunshinedecorating.co.uk](http://www.sunshinedecorating.co.uk)

 [@sunshinedecorator](https://www.facebook.com/sunshinedecorator)       [@sunshine\\_pd](https://twitter.com/sunshine_pd)

  **FULLY INSURED** | **CHOLSEY, OXON**



THE WALLINGFORD BOOKSHOP  
10C ST. MARTIN'S STREET  
WALLINGFORD, OXFORDSHIRE OX10 0AL  
Telephone / Fax: 01491 834383  
Email: books@wallingfordbookshop.com

We offer friendly informed assistance and an excellent range of books, audios and fine art stationery.

Many titles not stocked can be obtained within 24 hours.

## A.G.CURTAIN DESIGN LTD

[www.agcurtaindesign.com](http://www.agcurtaindesign.com)



Made Exclusively For Your Home  
Bespoke Curtains & Soft Furnishings

- 15 years serving clients in South Oxfordshire
- 1,000's of design lead fabrics to choose from
- Expert making and fitting service
- Curtains & Soft Furnishings
- Poles – tracks – finials & tie backs
- Cushions - lamp shades & headboards
- Made to order promptly & efficiently
- Free measure & quotation service

BEAUTIFUL  
CURTAINS, BLINDS  
&  
SOFT FURNISHINGS  
01491 834238



Blinds & Shutters  
Modern & Contemporary

- Wooden & Venetian
- Roller & Vertical
- Perfect fit & Faux Wood
- Made to fit your windows
- Inside & Outside recess fit
- Manual & Remote controls
- For all rooms in your home or business

VISIT OUR RETAIL STORE AT 3 ST, PETERS PLACE, WALLINGFORD, OXON. OX10 0BG



## CARE DRY CLEANERS

10B St. Martins Street, Wallingford OX10 0AL  
Tel: 01491 837318

- Suede Leather • Alterations • Press Services • Wedding Dresses •
- Settee Covers • Rugs • Laundry • Duvets • Curtains



**Mum and baby/toddler fitness classes**  
running in **Cumnor, Didcot,**  
**Wallingford & Oxford**

Contact Jen to book your free trial

[www.mumtomumfitness.com](http://www.mumtomumfitness.com)

07771 848387 | [jen@mumtomumfitness.com](mailto:jen@mumtomumfitness.com)

[mumtomumfitness](https://www.facebook.com/mumtomumfitness) | [@mumtomumfitness](https://www.instagram.com/mumtomumfitness)

SHOE  
REPAIRS

ENGRAVING

KEY  
CUTTING



## FEET FIRST

21 St. Mary's Street, Wallingford  
Contact Gary on: 01491 825224



WATCHSTRAPS  
BATTERIES

STITCHING  
REPAIRS

TRAVEL GOODS  
LUGGAGE

**Benson Angling Centre**  
Your Friendly Local Angling Centre

Unit 3, Benson Waterfront,  
Benson Wallingford OX10 6SJ

Tel: 01491 838288

Email: [dibby1949@yahoo.co.uk](mailto:dibby1949@yahoo.co.uk)



Stockists of Drennan E.S.P. Dynamite Baits, Sticky Baits, Baitech, Dead Baits and Live Baits Available. We buy and sell all used angling items



**St Mary's & St Leonard's  
Wallingford**  
*open to God, open to all*

YouTube



**8am St Leonard** – Holy Communion

**10am St Mary-le-More** – Parish Communion with Children's Church, All Age Worship or Family Service (also live-streamed)

**6.30pm St Leonard** – Evensong

[www.marylemore.co.uk](http://www.marylemore.co.uk)

Team Rector: The Revd David Rice Tel: 01491 202188



THE POSITIVE  
OUTCOMES GROUP

Electrical

Plumbing

Fire and Security



**Call: 01491 835875**

Email - [reception@groupga.co.uk](mailto:reception@groupga.co.uk)

Unit H Moses Winter Way, Wallingford, OX10 9FE

The  
Little  
Artichoke

Experienced local chef  
available for event catering, from  
BBQs & buffets to fine dining  
dinner parties

- We specialise in shellfish, but our capabilities are endless
  - We have an extensive menu & weekly specials
- We also have various cooking classes now running, from Lobster Thermidor to Beef Wellington

Contact Jason or visit website for further information  
07960 974057 | [thelittleartichoke@outlook.com](mailto:thelittleartichoke@outlook.com) | [www.thelittleartichoke.co.uk](http://www.thelittleartichoke.co.uk)



## St. Mary's Prep School goes to Everest!

St. Mary's Preparatory School in Henley are partnering with local resident Garth Miller, a high-altitude mountaineer and former British Army Gurkha officer, to deliver a series of unique experiential learning workshops for their pupils.

Garth Miller, a local Henley resident, will be setting off in May to attempt to set a world record for the fastest known time to summit Everest, from London to London.

In advance of his expedition, Garth will be running a number of highly interactive sessions for the children, introducing them to every aspect of the planning of his trip – from the rigorous physical training regime, to nutrition, geography and the opportunity to try on his specialist equipment.

Garth Miller, High-Altitude Mountaineer: *"I am really looking forward to meeting the children at St. Mary's School. I know that making learning fun is a really effective way to engage with young people. I will be challenging the children to think about what their dreams are, and how they can 'be their own hero'. By offering Skye sessions from Everest itself, I will - in effect - be bringing the St. Mary's children along on the climb to the top of the world!"*

Mr Miller's expedition aims to inspire children to set goals, to overcome challenges, appreciate the importance of teamwork, and to be the best that they can be.

In addition to the sessions with pupils, Mr Miller will also be giving a talk to parents, introducing his current challenge, talking about his future plans, the 'growth mindset' work that he is doing with the children, and focusing on teamwork, perseverance, resilience and determination.

Rob Harmer, Headmaster: *"I know that our children really enjoy this type of immersive learning opportunity, and we are very grateful to Garth for coming into school to share his incredible experiences with our pupils. Garth's beliefs in the importance of setting goals and overcoming obstacles along the way, are very closely aligned to our own school values and our focus on the importance of instilling a growth mindset. These valuable messages really resonate with our pupils, and they are very excited at the prospect of joining Garth on the top of the world!"*



## The Cholsey and Wallingford Railway (CWR) has been nominated for the "HRA Award for Small Groups" at the Heritage Railway Association Awards.

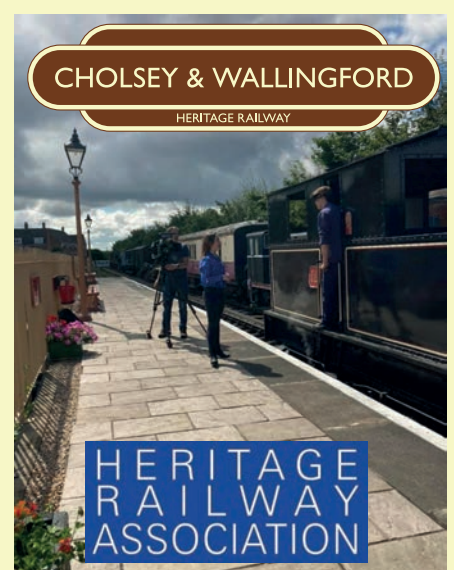
The nomination is for the successes the railway has achieved in 2021 as a visitor attraction during the post Covid recovery.

In the last 12 months the railway has appeared in *The Daily Telegraph's* **"Seven great railways to visit after lockdown"** and also been seen on national TV in the ITV series **"All around Britain"**.

This isn't the first 'gong' the railway has been nominated for, last year the railway won an award at the National Railway Heritage Awards for the rebuilding of the Maidenhead Canopy at Wallingford station.

The railway welcomes all volunteers, if you want to volunteer for the railway then drop a message to the railway via facebook messenger or use the "Contact Us" form on their website.

The railway re-opens to passengers at Easter and has a series of events through the year including running trains during **"Bunkfest"** and **"Wallingford at War"** in October.



# WOW WHAT'S ON!

## Wallingford Producers Market

WLPM. Based at **Centre 70**. Saturday morning between **10am and 12pm**.

Starting in March, the market will also be in the **Market Place** on every first Saturday of the month with extended hours between **10am and 1pm**. Get your weekly fix of fresh vegetables, cheese, cakes, bakes, coffee, and lots of foody treats. [wlpm.org.uk](http://wlpm.org.uk)

## Wallingford Country Market

**Have you paid us a visit recently?**

Open each **Friday morning in St. Mary-le-More Church**, (behind the Town Hall), between **9.30 am – 12 noon**.

Our Easter Market will be held on 'Maundy Thursday', **14th April**. Orders can be placed. For further information please contact: Alison Broadbridge (**01491-681596**), Sandra Halstead (**01491-836527**) or, come and visit us one Friday morning.

## Wallingford Photographic Club

**March 17th**, James Kerwin talks to us of his adventures with "Abandoned Architecture". **March 24th** Eddy & Pam Lane take us on a voyage "In the footsteps of Shackleton". **March 31st**, we'll learn all about photo editing with Joe Houghton's "I didn't know Lightroom could do that!"; The club meets via Zoom every **Thursday from 7.30pm** until around **9.30pm**. Please visit [www.wallingfordphoto.club](http://www.wallingfordphoto.club) to find out more or find us on Facebook and Instagram.

## Winter Recitals Wallingford

The finale! **Saturday 5 March** at **St Mary's Church** with a **7.30 pm** start. [www.anitapiano.com/wrw22](http://www.anitapiano.com/wrw22),

**Wallingford Chamber Music** we launch a full season of 9 concerts between May and October. [www.wcm.org.uk](http://www.wcm.org.uk)  
For more details. Roger Morgan on **01491 837494** and I'll send you one.

**Benson Choral Society** is back with a bang! Saturday 19 March at 7.30pm at Dorchester Abbey. Book online at [www.benson-choralsociety.org.uk](http://www.benson-choralsociety.org.uk) or call Stephanie evenings on **01865 407395**.

## Watlington Bowls Club

**Do you want to try a new sport?** Are you free on **Tuesday afternoons** or **Thursday evenings**? For more information contact:- [Maureen\\_norton@yahoo.com](mailto:Maureen_norton@yahoo.com) or **07946407967**

## Knit & Natter Group

**Every Thursday 12.30 – 2pm**. Bring along your knitting, crochet or other creative projects and join others for a cuppa, cake and chat. All ages and ability welcome. Suggested donation £2.50 for a drink and cake. **The Community Hub Café, 21b St. Mary's Street, Wallingford, OX10 0EW**

## Concerts@Cholsey

Concerts@Cholsey is pleased to announce a concert by popular five-piece folk band **Magpie Lane**, at the **Cholsey Pavilion** on **Saturday 12th March**. Doors open at 7.00 pm for 7.45 start. Tickets are £10 from **01491 652295** or [concerts@cholsey.com](mailto:concerts@cholsey.com)

## Mum to Mum Fitness classes.

Interested in joining?

Why not contact me to book your **FREE trial!**

Jen Owner and Instructor [www.mumtomumfitness.com](http://www.mumtomumfitness.com).

## Wallingford & District Art Club.

Paul Talbot-Greaves is our guest artist for an online demo painting in watercolour on **Tuesday March 15th**.

On **March 26th** we have an in-person workshop with Phil Oakley on painting with oils. The Club offers Tuesday afternoon art classes led by local artist and tutor, Grant Waters and have spaces available for anyone wanting to develop their skills in any of their preferred media. For information on how to join any of the above sessions, please visit our website [www.wallingfordartclub.org.uk](http://www.wallingfordartclub.org.uk) or contact [admin@wallingfordartclub.org.uk](mailto:admin@wallingfordartclub.org.uk)

## GG Wildlife Experiences

**Walking Up an Appetite**. A great event for those who love to meet friends for a great pub lunch and would like to mix that up with a wildlife walk together! Or, if your friends will only do the "lunch" part, you can meet them there and join some like-minded people beforehand. **Dates: Sunday 6th March, Sunday 10th April, Sunday 12th June**. GG Wildlife Experiences. [ggwildlifeexperiences.co.uk](http://ggwildlifeexperiences.co.uk).

**WILDLIFE ON THE WATER - BOAT TOUR IN GORING-ON-THAMES!**  
This unique, three hour guided "Wildlife on the Water".

**Sat 23rd April 06:30am. Sun 22nd May 06:00am. Sat 16th July 06:00am**. GG Wildlife Experiences. [ggwildlifeexperiences.co.uk](http://ggwildlifeexperiences.co.uk). **07702 968508**

## British Modern Military History Society

The first of our two March talks will be a Zoom talk on **The Boer War by Dr Spencer Jones** on **1 March at 7.30pm**. To register for talks, email us on [zoom@bmmhs.org](mailto:zoom@bmmhs.org). The second BMMHS talk in March will be by **John Cotterill on From Wellington's Army to Kitchener's Army – The Crimean War and its Consequences**, on **Wednesday 9 March at 7.30pm** in **Woodcote Village Hall**. We strongly advise checking [www.bmmhs.org](http://www.bmmhs.org) for the latest information

## Wallingford Museum

The Museum will running Easter holiday workshops for families. Please watch the web site for details.

[www.wallingfordmuseum.org.uk](http://www.wallingfordmuseum.org.uk)

The Wallingford Historical and Archaeological Society zoom talk on **9th March** shares this fascinating journey with its membership. [www.twhas.org.uk](http://www.twhas.org.uk)

**9th March (Weds) Ben Taggart: 'Modelling Houses, Modelling Castles'**

**13 April (Weds) Marie-Louise Kerr: 'Oxfordshire on Canvas'**  
Marie-Louise's presentation 'Oxfordshire on Canvas' is a visual tour of Oxfordshire which looks at how artists, both national and local, have captured our beautiful area and been influenced by it.

**Benson Garden Club** We meet on the **1st Thursday every month at Benson Parish Hall, Sunnyside, Benson at 7.45pm**. We have speakers October through to April after which we go out and about visiting gardens. All welcome, visitors £5. Find us on Facebook/Benson Garden Club <https://bensongardeningclub.weebly.com>



### Wallingford Tuneless Choir

The choir meets every Thursday from 8pm to 9.15pm, with registration starting from 7.45pm at St Mary Le More Church, Market Place, Wallingford OX10 0EG. You can find out more information at [www.tunelesschoir.com/Wallingford](http://www.tunelesschoir.com/Wallingford) email: [wallingford@tunelesschoir.com](mailto:wallingford@tunelesschoir.com) or call Tracy on 07843 144737.

### Thameside (Wallingford) u3a

For more information and an enquiry form have a look at our website:- [www.wallingfordu3a.org](http://www.wallingfordu3a.org). Prospective new members are always welcome at our monthly coffee mornings (Centre 70 every first Friday from 10.30am) or speaker meetings (every third Wednesday, St Mary's Church at 2pm)

### Henley and District Stamp Club

Auction Month, our ever increasingly popular Auction will take place on Wednesday 9th March commencing at 7.45 (Viewing from 6.45 p.m.) Non-Members are welcome. The Catalogue is on our website. Do have a look, you may find just what you have been searching for to fill that gap.

**March 9th** Open Auction 7.45 p.m.

**March 23rd** Guest Speaker TBA

Meetings are held the 2nd and 4th week of the month at Bix Village Hall at 7.30 p.m. Visitors and new members are welcome. Further details can be obtained by phoning **01491 681739** or on our website: - [www.henleyphilatelic.org.uk](http://www.henleyphilatelic.org.uk)

### Meadows Morning Market

The Great Hall, Fairmile, Cholsey. Saturday's

**Feb 26th, Mar 26th, April 30th, May 28th, June 25th, July 30th, Aug 27th, Sep 24th, Oct 29th, Nov 26th**

Janine: **07786 903289**. [meadowsmorningmarket@gmail.com](mailto:meadowsmorningmarket@gmail.com)

### Funky Moo Brush Party, Brunch Party

**Tuesday 5th April. 11am – 2pm. Royal Standard,**  
Coffee Culture, 32 St Mary's Street Wallingford.

Tickets: [brushparty.co.uk/events/funky-moo-wallingford](http://brushparty.co.uk/events/funky-moo-wallingford)

### Winter Recitals Wallingford - the finale!

This series gets ever more popular as time goes on, and all too soon we reach the finale on **Saturday 5 March at St Mary's Church** with a 7.30 pm start. This time pianist Anit D'Attellis combines with trombonist Ian Barlow and trumpeter Dan Moss for an evening of Brilliant Brass. Tickets are £14 and we encourage you to book online at [www.ticketsource.co.uk/wrw22](http://www.ticketsource.co.uk/wrw22) - first come first served! For more programme details go to [www.anitapiano.com/wrw22](http://www.anitapiano.com/wrw22), or call me Roger Morgan on 01491 837494 if you get stuck. Proceeds are shared between Sue Ryder and St Mary's.

### Wallingford Chamber Music - a new name in town

This is a rebranding of the familiar Music at St Peter's, and now we launch a full season of 9 concerts between May and October. Last year we had to move to St Mary's Church to comply with Covid 19 restrictions. This has proved very popular with our audience, with good acoustics, step-free access, toilets and refreshments, so we've decided to stay there for the whole of 2022. Full details are available online at [www.wcm.org.uk](http://www.wcm.org.uk) and that's the place to book your tickets too, which are £18 and a bargain season for the whole series for £110. We're bringing back our informative brochure which you can pick up at the usual places, but if you can't find one, give me a call, Roger Morgan on 01491 837494 and I'll send you one. This year we are holding a pre-season preview event for our Friends on Saturday 2 April at 6pm in St Mary's - drinks, chat and a bit of entertainment. A modest subscription will get you in - give me a call or see more information on our website.

### Benson Choral Society is back with a bang!

If you walk past St Mary's Church, Wallingford on a Tuesday evening you'll hear some great singing as we rehearse! We're delighted to stage our first full-scale concert since lockdown! It's also the first outing of our new Musical Director David Wordsworth, who with a wealth of experience in conducting and music publishing, introduces Bob Chilcott's Requiem (2010) to the choir. Former King's Singer Chilcott is now one of Britain's leading choral composers and the choir are really getting to grips with this new challenge. The programme is completed with Haydn's sparkling Nelson Mass. Irish soprano Ilúnó Connolly heads an international quartet of soloists, and the Elgar Orchestra complete the scene. The performance takes place on Saturday 19 March at 7.30pm at Dorchester Abbey. Altogether, you'll get something special! Tickets are £18 and £15 (reserved) or £12 (unreserved) and can be booked online at [www.bensonchoralso-ciety.org.uk](http://www.bensonchoralso-ciety.org.uk) or call Stephanie evenings on 01865 407395.

**Karate classes for children with Oxford sport and traditional martial arts. Mondays 4:30pm at Wallingford school. Tuesdays 4.30pm at Crowmash village hall. Wednesdays 4.45pm at Wallingford school.** A month trial is available.

Lloyd Anderson. Oxford sport and traditional martial arts.

**Toddler Group.** Wigod Way Family Centre. Tuesday Outdoor Explorers 10am. Wednesday Baby Babble 10am to 11.30am. Thursday Family Group, Tots Time 10am. Friday Family Fitness, Fitness Friday 10am. Monthly Sensory Session, a Special time to play.

<http://Wallingfordfamilycentre.eventbrite.com>



### Ladies Running Meet Up

**Every Tuesday, 7pm, Runwise Sports, 16 St Mary's Street, Wallingford.**

5K Road Run. First run is free, £3 thereafter. Just turn up



## Domestic Maintenance

- Window Cleaning
- Conservatory Roof Cleaning
- Gutter Clean / Repair
- Patio / Driveway Clean
- Waste Removal
- Gardening
- Hedge Cutting
- Painting and Decorating
- Fencing
- and much more...

For a **FREE** quotation please call Sam on  
**07926 415 176**

Also follow SB Domestic Maintenance on Facebook for an up to date portfolio of completed works and monthly special offers



## Volunteer Open Morning

Nuffield Place, Saturday 19 March

Help us to tell the fascinating story about the life of one of the richest men in the world and the UK's greatest ever philanthropist. Volunteering is a great opportunity to make new friends, learn new skills, and develop new interests, while helping us to protect one of the many beautiful places we look after. Please join us on Saturday 19 March for a cup of tea or coffee and a friendly chat with one of our volunteers or managers.

To help us with arrangements, please let us know if you would like to come on [vstnuffieldplace@nationaltrust.org.uk](mailto:vstnuffieldplace@nationaltrust.org.uk)

Nuffield Place, Bradley Rd, Henley-on-Thames RG9 5RY

[www.nationaltrust.org.uk/nuffield-place](http://www.nationaltrust.org.uk/nuffield-place)

# W

## WATER'S EDGE

### PLUMBING & HEATING

## Plumbing and Heating Services

Based in Crowmarsh, fully qualified and insured.  
Contact our friendly office team for a quick response  
to your requirements or to arrange your **FREE QUOTE**

# 01491 821 626

[www.watersedgeuk.co.uk](http://www.watersedgeuk.co.uk) | [contactus@watersedgeuk.co.uk](mailto:contactus@watersedgeuk.co.uk)

- General Plumbing
- Shower Installations
- Leak Repair
- Powerflushing
- Central Heating
- Gas Safety Services
- Boiler Repairs
- Underfloor Heating
- Boiler Installations
- Estate Agent Services



Proud members of

**Checkatrade.com**  
Where reputation matters



# Shaun Guard

## TV & WIFI SERVICES

- **Aerials** - supplied, repaired & poor reception solved
- **Satellite** - Sky Q dish upgrades, discreet dish installation also foreign TV
- **Internet** - blackspots cured, data cables to your TVs / computer
- **TVs** - hung on your wall or set up & tuned

OXFORD AERIALS

Call **Wallingford**  
**01491 833282**  
[www.oxfordaerials.co.uk](http://www.oxfordaerials.co.uk)

## G.R. Galliford

Graham  
07762 650 809  
01491 824583



Mini Digger  
with Operator  
Block Paving  
Driveways  
Patios  
Drop Kerbs  
Groundwork

[g.galliford@btinternet.com](mailto:g.galliford@btinternet.com)

## Have you a Lasting Power of Attorney for Finance and Health?



## HELP-PEN-HAND

Learn about LPAs for just £35.  
Then you can do it yourself – if  
daunted, I'll help you. Val Wolsey

01491 836820 | [HelpPenHand@gmail.com](mailto:HelpPenHand@gmail.com)



# Wallingford Photographic Club

[www.wallingfordphotographic.club](http://www.wallingfordphotographic.club)

## Are you interested in learning more about photography or getting creative with your smartphone or camera?

Come along to Wallingford Photographic Club in 2022: we are an informal and inclusive group of photographers with a weekly programme of talks, presentations, competitions and practical sessions. It's not all about the kit- you'll learn so much from the speakers and members, and the feedback on any photos you choose to present, if you're keen to have a go; composition, use of light, camera settings and more.

We are meeting online still, but we are offering a full programme and coming up in February we have a talk from Roger Hance on switching camera type to invigorate his photography (on 10th), followed by a club competition (themed 'Street' photography) on 17th, with Chris Palmer joining us on 24th to talk about relating his emotional response to the landscape.

**The club meets via Zoom every Thursday from 7.30pm until around 9.30pm. Please visit [www.wallingfordphoto.club](http://www.wallingfordphoto.club) to find out more, or find us on Facebook and Instagram.**

## Citizens Advice needs volunteer advisers

**citizens  
advice**

There comes a time for all of us when we face problems that are too stressful or complicated to sort out alone.

Last year – one of the most difficult - our 90 advisers advised 9,000 clients on over 20,000 problems.

We helped four in five resolve their debt, benefits, employment and housing difficulties. Many of these were linked to the Covid-19 crisis.

We now need more advisers as we move into the pandemic recovery phase.

Our main offices are in Abingdon, Didcot, Henley and Thame. Since March 2020 our volunteers and staff have been advising the public from home on our Adviceline service. Recently we partially re-opened our offices, in part to train new advisers.

**What will you get out of it?** You will join a friendly team, meet new people, develop your skills and make a real difference to people's lives.

You'll need to have good listening and interpersonal skills, a willingness to learn and be confident with computers. Full training will be provided.

Henley adviser Amanda says: *"I am proud to volunteer with Citizens Advice because they offer crucial support to those that need it most, and my colleagues, both volunteers and employees, make volunteering a pleasure."*

We welcome applications from all sections of the community and are committed to equality and diversity.

If you have eight hours a week to spare for the next two years or more and are looking for a satisfying and stimulating volunteer role in your local community, please contact us at:

[www.citizensadvice.org.uk/local/oxfordshire-south-vale/volunteer/](http://www.citizensadvice.org.uk/local/oxfordshire-south-vale/volunteer/)

## Do you need help getting to medical appointments?

If you live in Wallingford or the surrounding villages, have no access to personal transport and are unable to use public transport we may be able to help. If you need to attend the hospitals in Oxford, Reading, Wokingham, visit your local GP surgery, dentist, podiatrist, optician or other medical practitioner, do get in touch.



Our volunteers, who use their own cars, are friendly local people will drive you to medical appointments, wait for the duration of the treatment and then take you home. There is a mileage charge to cover cost of fuel and other running costs of the car.

If you think we could help you or someone in your family please do get in touch. If you're not sure about any aspect and would like to speak to me, leave a message in the office and I'll come back to you.

We are based in the **Methodist Church in St Leonard's Square, Monday to Thursday 9.30 and 11.30**  
Tel. **01491 836345** or email [wallingfordvolunteerdrivers@gmail.com](mailto:wallingfordvolunteerdrivers@gmail.com)

Sylvia Wear, WVD Manager

# WALLINGFORD TEA & COFFEE



We roast  
High Grown Coffees  
and we stock Quality Teas  
together with a range of  
Herbal beverages and Spices  
plus a wide variety of  
Tea and Coffee accessories

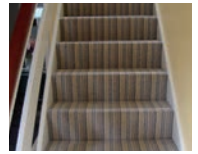
Wallingford Tea & Coffee  
Company Limited  
6a St. Martin's Street  
Wallingford, Oxon. OX10 0AL  
Telephone: 01491 836263  
kitchtea@gmail.com

# Masterfloors

Contract and Domestic Flooring Specialists



20 St. Martin's Street  
Wallingford  
Oxon. OX10 0AL  
Tel: 01491 833701  
Free estimates



[www.masterfloorswallingford.co.uk](http://www.masterfloorswallingford.co.uk)

## Manor Café at Howbery

Open: 9am-4pm, Mon-Fri



- ✔ Hot and cold drinks, homemade cakes: all day
- ✔ Breakfast: 9.00am - 10.30am
- ✔ Paninis, baguettes and baps: 11.00am - 2.00pm
- ✔ Hot and cold lunch options: 11.30am - 1.30pm

Order online or at service counter | Outside and indoor seating areas  
Takeaway service | Beautiful grounds | Ample parking

[www.howberypark.com](http://www.howberypark.com)

# HOMEBASE

## PROPERTY

★ WHATEVER YOUR PROPERTY NEEDS ★

**SALES**

**LETTINGS & MANAGEMENT**

01491 824470 | [info@hb-pm.co.uk](mailto:info@hb-pm.co.uk)  
16B St Mary's St, Wallingford, OX10 0EW

## Fireplace Magic

### Stoves & Fireplace Sales

- Solid fuel, gas or electric fires
- Installation
- Chimney sweeping
- Woodburner servicing
- Chimney lining
- HETAS registered



Visit our showroom at  
45 Prospect Street  
Caversham RG4 8JB  
Tel: 0118 9463060

[www.fireplacemagic.co.uk](http://www.fireplacemagic.co.uk)

# Wallingford

## TILES & BATHROOMS

## Tile & Bathroom Showroom

Call Now 01491 377 272  
[showroom@wallingfordtilesandbathrooms.co.uk](mailto:showroom@wallingfordtilesandbathrooms.co.uk)

# WALLINGFORD RADIO

For the community of Wallingford Oxfordshire

Turn on, tune in  
Listen online at  
<https://wallingfordradio.co.uk>



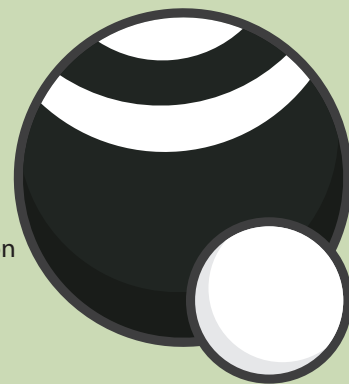


# WATLINGTON BOWLS CLUB

Do you want to try a new sport?  
Are you free on Tuesday afternoons or Thursday evenings?

Watlington Bowls Club is looking for new players of all abilities  
The club is a very friendly place to learn a new skill and have fun  
We play outside from April till October and inside the rest of the year  
The bowls club has its own clubhouse and green in the centre of Watlington  
Male or females of any age are welcome

For more information contact:-  
Maureen\_norton@yahoo.com or 07946407967



## HIGH STEWARD OF WALLINGFORD'S AWARD FOR COMMUNITY SERVICE



Wallingford  
Town Council

As High Steward of Wallingford I am delighted to request nominations for an award that recognises the outstanding contribution made by an individual or an organisation in establishing, maintaining and promoting the highest standards of community service in Wallingford.

The individual or organisation must be able to demonstrate that they have made an outstanding contribution which benefits residents and the community of Wallingford. They need not themselves live or be based in Wallingford, but the benefit from their work should be shown for a sustained period in the town. Nominations should describe how the nominee has addressed values such as (but not exclusively); helping the disadvantaged, promoting inclusivity and participation in community life, and supporting Wallingford as a town which encourages vibrant community activities.

Nominations should, as far as possible, be from a member of the public independent of the person/organisation being nominated, but where this is not practicable, the person making the nomination must make clear their relationship to the nominee. Self-nominations are not allowed. A nomination statement should be no longer than 500 words and may contain referees. Where referees are included, it is the responsibility of the person making the nomination to ensure that permission has been obtained from the referees for them to be contacted.

Nominations should be posted to the **Town Council at 8a Castle Street, Wallingford OX10 8DL** or sent by email to **senioradmin@wallingfordtowncouncil.gov.uk**. In both cases they should be clearly marked '**For the attention of the High Steward**'.

**This is an annual award. For the 2021 award, nominations are requested by 28th March 2022 and the winner will be notified by 3rd May 2022.**

Ken Lester



Wallingford  
Town Council

Spring is almost upon us – and we are sure now that restrictions have been lifted lots of people are keen to be out and about enjoying and exploring Wallingford and our surrounding villages.

What a wonderful year this will be with our **Queen's Platinum Jubilee** and the resurrection of Wallingford's annual events.  
**We look forward to welcoming visitors to our town again.**

The Town Information Centre is based at the Undercroft of the Town Hall in the Market Place. If you haven't visited us before do come and meet us and have a look around.

We may inspire you with our free leaflets and our range of local maps.

Also we would like to remind local clubs and organisations that we have free advertising for your events.  
All we need is two A4 posters for our window display. Please do call into the Information Centre for local maps and free leaflets.

Tina, Sue and Anita  
Town Information Centre

## Oxfordshire Wildlife Rescue

First of all, a big thank you to all the kind people who responded to Oxfordshire Wildlife Rescue's (OWR) appeal for (meaty) catfood, clean towels and newspaper. Our rescued hedgehogs have been warm and had full tummies this winter thanks to you!

### Meredith's tale

Today I'd like to tell you about one of the poorest hedgehogs we have had in a long while. Meredith had an open injury to a back foot and had lost several toes. She had so many parasites in her tummy and had had so little to eat for such a long time that she had lost over half her body weight. Her skin was hanging loose on her, poor thing. She could not even lift her head.



She went straight into an incubator, and was given specialist rehydration injections by veterinary staff every few hours, including through the night. It was touch and go for days!

Finally, Meredith started eating special convalescent puppy food (£11 for a little tin!) and then normal hedgehog food. We're pleased to say she's now gaining weight and should be ready for release in the spring.



### The bigger picture

Hedgehog numbers are down an incredible, and shocking, 98% since the 1960s, so every single creature matters, now more than ever.

If you have any hedgehogs visiting where you live, here are some things you can do to help:

- Always leave out a shallow bowl of water – all kinds of wildlife will enjoy this, but please put in a couple of stones so passing insects can climb out!
- When it's winter and the weather is mild, hedgehogs don't realise they should be hibernating. Their usual food supply is not available in winter, so a regular supply of meat-flavoured cat/kitten biscuits will literally stop them starving and help them make it through to spring.
- a nice sheltered corner of the garden with lots of dried leaves provides a safe spot for a hedgehog.

If you'd like more animal rescue tales, to see what Oxfordshire Wildlife Rescue is doing or to find out how to support us, please follow us on Facebook or visit our website [www.oxfordshirewildliferescue.com](http://www.oxfordshirewildliferescue.com)

Thank you from the OWR team and all the hedgehog patients!

[www.oxfordshirewildliferescue.com](http://www.oxfordshirewildliferescue.com)

**Here at Homebase Property, we have signed up to the Twin Town Challenge 2020 (+2) to raise money for the amazing charity Special Effect who are putting fun and inclusion back into the lives of physically disabled people.**

Money raised will help them develop technology to allow those with complex disabilities to join in and play video games with their friends. More info can be found at [specialeffect.org.uk](http://specialeffect.org.uk)

With our tag line "we'll get you Mooving" we have joined the challenge to find a car for less than £500 (harder than you think!) and then drive from Oxfordshire to France with money raising challenges along the way.

We will be decorating our old banger and hope that it makes the journey from Blenheim Palace to France (and back again!) at the end of April.

Keep an eye out around town for our old banger and give us a wave if you see us. If you would like to help us by donating, our link is below or scan our QR code

[www.justgiving.com/HomebaseRally](http://www.justgiving.com/HomebaseRally)





# WILDLIFE ON THE WATER - BOAT TOUR IN GORING-ON-THAMES!

**Following last year's popular events, we are running this unique experience again this year.**

This isn't just for photographers but anyone who loves nature and wildlife. Being on a boat sitting only inches above the water level gives such a different perspective and enables us to get much better views and closer to the wildlife. Don't worry if you don't have a camera, we share photos from the experience afterwards.

We have also added another element this year so that you get all perspectives of the river in one.

Starting with a short walk up the river where we point out all the key areas to look and what species we can see in the area, we then meet up with the boat and head down river on our tour.

Not sure this is for you why not have a listen to this recent account from a BBC Radio presenter who joined us last year on one of the trips.

A Kingfisher is like a "Golden Snitch" – Babs Michel (BBC Radio) [ggwildlifeexperiences.co.uk/wp-content/uploads/2022/01/Babs-Michelle-WOW.m4a](https://www.ggwildlifeexperiences.co.uk/wp-content/uploads/2022/01/Babs-Michelle-WOW.m4a)

## Dates

Sat 23rd April 06:30am

Sun 22nd May 06:00am

Sat 16th July 06:00am

This unique, three hour guided "Wildlife on the Water" boat tour is £75 for members and £95 for non-members.

We start with juice and pastry to wake us up and includes FREE Binocular. We can also arrange a booking at the Coppa Club afterwards for a heartier breakfast if you like.



More information and how to book can be found here: Wildlife on the Water Experience [ggwildlifeexperiences.co.uk/wildlife-on-the-water/](https://www.ggwildlifeexperiences.co.uk/wildlife-on-the-water/)

Drop us an email if any questions or to enquire about different dates or group & private bookings.

Steven Gozdz  
GG Wildlife Experiences  
Mob: 07702 968508  
Web: [ggwildlifeexperiences.co.uk](https://www.ggwildlifeexperiences.co.uk)

## Walking Up an Appetite

A great event for those who love to meet friends for a great pub lunch and would like to mix that up with a wildlife walk together! Or, if your friends will only do the "lunch" part, you can meet them there and join some like-minded people beforehand.

This walk is simply beautiful with The Thames beside you and the wildlife all around both in and out of the water. We will be looking out for warblers such as the Cetti's and Chiffchaff and also Reed Buntings and flocks of Linnet. In the Spring we see the arrival of other warblers like Sedge, Reed and Willow and there are always Gold Crest and even a few Firecrest in the vicinity. We always see our beautiful Red Kites but also Sparrowhawks soar over the river looking for a snack or two. And of course the waterside birds such as the Grey Wagtail, Cormorant and our stunning local Kingfishers!

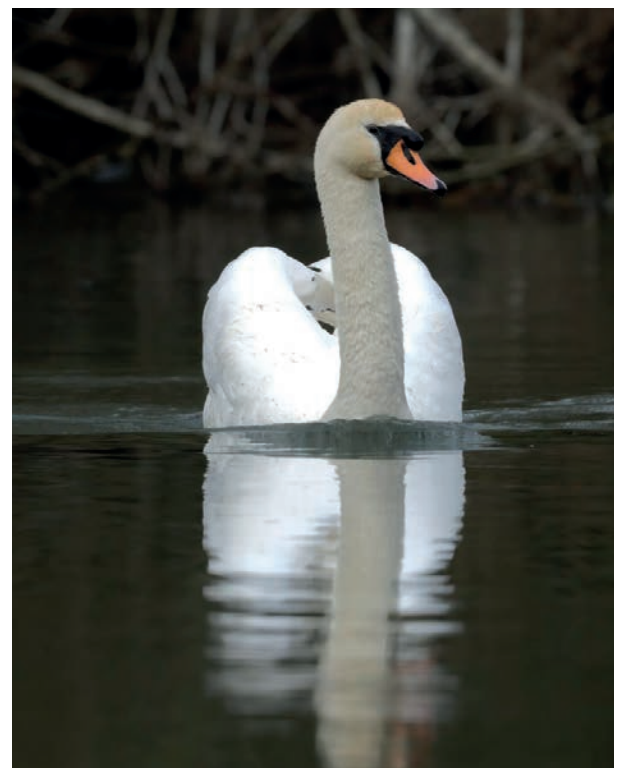
## Dates:

Sunday 6th March

Sunday 10th April

Sunday 12th June

[ggwildlifeexperiences.co.uk/wildlife\\_walks/walking-up-and-appetite/](https://www.ggwildlifeexperiences.co.uk/wildlife_walks/walking-up-and-appetite/)



## We are hiring!



### We are looking for staff who have a passion for working with the elderly

We're looking for dedicated, warm hearted people to work in our luxury care home, Benson House, Caring Homes purpose-built home in the village of Benson. Providing residents with high quality residential, nursing and dementia care.

If you are looking to join a fantastic Care Home family and if making people's lives better, is what gets you up in the morning, you should come and join a like minded team at Benson House care home.

We have vacant positions across the home including:

- Senior Care Assistants
- Care Assistants
- Hospitality
- Kitchen
- Domestic Assistants

If you want to be part of our team and have the drive and the talent to support our residents at Benson House then we want to hear from you!



# Benson House Care Home



## Discover Benson House Care Home

Benson House our purpose-built luxury care home in Benson near Wallingford provides residential, nursing and dementia care on a permanent and short stay basis. The home is centred around our residents, their needs and wishes, with various lounges which are perfect for socialising, to a cinema room, bistro area and hairdressing salon, there's plenty to keep residents busy.

## Keeping things personal

The wonderful surroundings at Benson House are matched by the standard of care our team brings residents. We love learning as much as we can about the people we care for, so their time is tailored to their individual needs, interests and preferences. This can be as small as knowing when they like to wake up, to how they like their tea, and everything in between.

We give as much independence as possible, letting individuals choose how they wish to spend their time and when it comes to individual bedrooms, we help our residents to put their unique stamp on their room and keep things just how they like them.



## Every need catered for

Mealtimes are an important part of daily life at Benson House. We know eating well and the social experience of dining are key to health and wellbeing. Our chefs select a different menu each day, creating lots of home-cooked dishes with fresh ingredients to choose from. Using their in-depth knowledge of nutrition, they cater for any special diets and needs. Whether you like three-meals-a-day or prefer to eat little and often, our menus and snack options provide complete flexibility.

## Keep doing what you love

There are group activities to enjoy seven days a week, including crafts, quizzes, films and gardening. If residents prefer to spend one-on-one time with a member of the team, they can enjoy a walk in the garden, tea and cake and much more.

Marilyn Kimayong, Home Manager at Benson House says *"we pride ourselves on giving residents a home filled with care, comfort, and a touch of luxury. Day and night, our dedicated team go above and beyond to meet every need with skill and compassion. We all want to have a plan to help look after our loved ones when they need some extra support, but don't always know what's best. So, we take time to get to know you and understand your individual needs to help you put these plans in place."*

## Benson House



CARING HOMES

## View our home

Our home is open for viewings and we're welcoming new residents and their families safely. Call freephone **0808 223 5401** to find out more about our home and the care we offer.





# Paddocks pre-School

Paddocks Pre-school  
Paddock Road  
Wallingford  
OX10 9LT  
[www.paddockspreschool.com](http://www.paddockspreschool.com)

A friendly preschool environment offering a wide range:

- Flexible sessions for 2 – 5 year olds
- Universal 15 hours funding for 2, 3 & 4 year olds
- Extended 30 hours funding for 3 & 4 year olds
- Large Garden & Forest School
- After school care available
- Holiday play schemes for 2-5 year olds



For more information or to arrange a visit, please call **01491 825333** Charity Number: 1001964  
or email [info@paddockspreschool.com](mailto:info@paddockspreschool.com)



# Skip Hire Caged Tipper Waste Management

☎ **01235 760555**

✉ [info@aasvogel.co.uk](mailto:info@aasvogel.co.uk)

🌐 [www.aasvogel.co.uk](http://www.aasvogel.co.uk)

[ Mention Window on Wallingford when you call ]

## JIM PINK (WALLINGFORD) LTD

The Friendly Family Firm  
Serving the Motorist since 1960

NEW & USED CAR SALES • SERVICING ALL MAKES  
MOT CENTRE • AIR CONDITIONING SPECIALISTS  
TYRES • BATTERIES • EXHAUSTS  
CAR SALES • SERVICE CENTRE

Wood Street Garage, Wood Street, Wallingford

01491 836017

01491 836022

07342 630396

[www.jimpink.co.uk](http://www.jimpink.co.uk)

[info@jimpink.co.uk](mailto:info@jimpink.co.uk)



1960-2022  
**62**  
Years

# WEPS

WALLINGFORD ELECTRICAL & PLUMBING SUPPLIES

OPEN TO THE  
TRADE & PUBLIC

☎ **01491 827825**

✉ [SALES@WEPS.ORG.UK](mailto:SALES@WEPS.ORG.UK)

UNIT 1 MOSES WINTER WAY

## Fitzcount Land

Land Acquisition > Planning > Development Specialists

- Local knowledge, Oxon, Berks, Hants, Bucks, Beds, Wilts
- County Council specialists
- Planning consent, Promotion, Professional Services

We specialize in finding the best solution for your land to  
maximise its potential

All initial conversations free, without obligation, in complete confidence and  
with the upmost sensitivity.

Talk with Adam Goddard 07493 170307

[adam@fitzcountland.co.uk](mailto:adam@fitzcountland.co.uk)

Over 20 years working for our customer partners



## Wallingford Tyres & Exhausts



FRIENDLY, PROFESSIONAL SERVICE  
AT COMPETITIVE RATES

PHONE: (01491) 824145 FOR A QUOTE

or call in at: AYRES YARD, STATION ROAD,  
WALLINGFORD, OXON.

OR BY APPOINTMENT OUTSIDE WORKING HOURS

Mon.-Fri. 8.30 a.m.-5.30 p.m. Sat. 8.30 a.m.-1.00 p.m.

(Just past the Esso Garage on the way to Didcot)



# Crosby Engineering

Latest Diagnostic Software

All Makes & Models Serviced & Repaired

Laser 4 Wheel Alignment

MOT

Air Conditioning servicing

Free Local collection

Audi BMW Mercedes VW Specialist

Family Run Business In Wallingford Since 1980

**01491 834544**

Unit F The Croft

Whiteley Road

Hithercroft Ind Est

Wallingford

Ox109rg

customer care without compromise

**CHEQUERS  
GARAGE**

Fullers Road, Aston Tirrold,  
Oxfordshire OX11 9EN

[info@chequers-garagedidcot.co.uk](mailto:info@chequers-garagedidcot.co.uk)  
[www.chequers-garagedidcot.co.uk](http://www.chequers-garagedidcot.co.uk)

At Chequers Garage we look after our customers as well  
as their cars. That's why we have courtesy cars, offer local  
collection and delivery, explain your invoice in plain English  
and every car is washed before it is  
returned - not only will your car run  
well, it will look great too!

**MOT**

**SERVICE**

**TYRES**

**AIR CON**



the Good Garage Scheme

Call today on **01235 850347**



## THAMESIDE (WALLINGFORD) u3a



January was a quieter month than usual when Omicron made us adopt a more cautious approach to things. However, having cancelled our coffee morning in January, we were back in Centre 70 for our February one which was attended by more people than we've ever had.

Our speaker meeting talk on "Humanitarian Vision" by Jim Holmes was a fascinating insight into the way people live in what would seem to us very adverse conditions. The somewhat belated "thank you" event for volunteers and convenors was held on 28th January, and our delayed Celebration lunch on 25 February.

There was an outing to the new galleries at the Imperial War Museum followed by the Old Operating Museum last month—our first visit to London for exactly two years. In March there is a trip to Cirencester visiting the Corinium Museum and Cirencester Park followed in April by a visit to Brighton Pavillion, then in May a trip on the Watercress Line.

Our future Speaker meetings in St Mary's Church include "How Tropical Rainforests Work" in March then "Darwin and the Beagle" in April.

We are delighted that our membership continues to grow with 11 new members joining us in January alone. We now have 56 interest groups and more are being planned.

For more information and an enquiry form have a look at our website:- [www.wallingfordu3a.org](http://www.wallingfordu3a.org). Prospective new members are always welcome at our monthly coffee mornings (Centre 70 every first Friday from 10.30am) or speaker meetings (every third Wednesday, St Mary's Church at 2pm).

Neil Kelly  
Deputy Chairman. Thameside (Wallingford) u3a.

## WALLINGFORD TUNELESS CHOIR SINGING LIKE NO ONE IS LISTENING

The Wallingford Tuneless Choir relaunched in September last year and continues to welcome new members of all ages and abilities.

The choir, which is led and managed by Tracy Noble, is designed for people who don't believe they can sing or perhaps lack confidence. We believe everyone has a right to sing whatever their voice! We sing purely for the fun and enjoyment of it. There is no audition, no pressure to improve and no judgement. You don't need to read music, remember words or to hit the right note, indeed there is no wrong note with our choir!

We sing music from all genres from wartime melodies to modern / future classics, musicals, films and rock. Once a month we hold an 'all request Thursday' where the members choose the songs to sing that night and we openly encourage suggestions of new songs to add to our ever-growing repertoire.

Members have said, "I may arrive at choir feeling sad but I leave with a big smile of my face." "I love coming to choir, it's a relaxed atmosphere and such good fun!" "I started coming to meet new people I am enjoying myself and it gets me out."

Tuneless Choir are proud to support the Wallingford Emergency Food Bank as its chosen charity and recently raised £105 through holding a Christmas raffle and further fundraisers are planned.

The choir meets every **Thursday from 8pm to 9.15pm**, with registration starting from **7.45pm at St Mary Le More Church, Market Place, Wallingford OX10 0EG**. You can find out more information at [www.tunelesschoir.com/Wallingford](http://www.tunelesschoir.com/Wallingford) email: [wallingford@tunelesschoir.com](mailto:wallingford@tunelesschoir.com) or call **Tracy on 07843 144737**. New member fee is £10 which includes your lyric book and first session, thereafter it is £7 per week or you can buy 8 sessions for £40 to take as and when you are able.

If you are not sure if this choir is for you, then why not come along for a taster session free of charge. Just contact Tracy to register your interest. We look forward to welcoming you soon. **Keep singing like no-one is listening!**



Photo courtesy of Ed Nix

**When  
your  
computer  
stops  
making  
sense...**

**PC TECHNICIANS**

**WINDOWS | APPLE | ANDROID**

**Call:** 01491 825449

**Click:** [www.thepctechnicians.co.uk](http://www.thepctechnicians.co.uk)

**Visit:** Unit B, The Croft, Whiteley Road, Wallingford, OX10 9RG



## Volunteer group raises funds for new relative's room at Wallingford Hospital



The Wallingford Hospital League of Friends has funded a new relative's room at Wallingford Hospital to support families of patients on St Leonard's Ward. The hospital now provides two end-of-life care beds and the relative's room offers a private and much-needed space for family members to spend time when they need quiet time or respite.

Charity number 1022280

Thanks to the League of Friends, the relative's room has been furnished with your donations to include a sofa bed, reclining chair, a television and other soft furnishings.

Future plans include upgrading the relative's room further, as well as to transform the hospital's courtyard into a sensory garden so that patients and families can spend time outside in a pleasant and calming environment.

The League of Friends is a group of volunteers which raises money to support the hospital and patients. Amongst other activities we have also supported the 'Artist in residence' programme which works as therapy with patients for 2 half days a week and engages the patients in creativity. A patient said "you brighten up the ward, it felt transformed in here today, I've loved doing the art".

The League of Friends are currently looking for volunteers from various backgrounds to further their work, and is keen to hear from people with fund raising and marketing experience. If you would like to find out more about joining the League of Friends, or would like to make a donation to support upcoming projects, please visit [www.wallingfordleagueoffriends.org](http://www.wallingfordleagueoffriends.org) or email us at [wchlof@gmail.com](mailto:wchlof@gmail.com)

## TRUSTEES WANTED - Campaign to Protect Rural England - Oxfordshire

### Do you care about your local countryside? Want to make a difference?

CPRE Oxfordshire is the voice of the countryside in Oxfordshire. Due to retirement of current members, we are looking for new trustees to join our team.

This is an excellent opportunity to play an influential role in a respected and long-standing environmental charity, applying your experience to make a real difference and to be part of a friendly group that is passionate about the Oxfordshire countryside.

Application deadline is 31 March 2022 in the first instance, but we are happy to receive expressions of interest on an ongoing basis.

For further info, please contact our Branch Secretary Dorian Grier.

E: [dorian.cpre@gmail.com](mailto:dorian.cpre@gmail.com) T: 01491 612079

See our website for more information: [www.cpreoxon.org.uk](http://www.cpreoxon.org.uk)



The countryside charity  
Oxfordshire

Campaigning to protect our rural county



**Brian Didriksen** who lived and participated in life in Wallingford for over 50 years passed away on 18th January 2022 aged 79.

Brian was known by many people in the Town and loved by many children (now in their 40's and 50's) for his Love for Life and Pranks! Many will recall the "Ski bike on Whittenham Clumps" or bungee swing in his sitting room, chatting to him as he fixed a boat or perhaps the fawn he took into St Nicolas School.

Even in his early 60's he was known to still hold his own whilst out riding with the Rides on Air weekend bikers, often first down the most daring of drops on his mountain bike ahead of others more than half his age.

Brian owned and ran Wallingford Double Glazing, he was also a Photographer where he covered everything from School Boy Scrambling at The Moors East Hagbourne to the Opening of the Habitat Store in the 70's. He also covered many local Weddings where his 'unique' style and ability to put the Bride and Groom at ease was well known!

Mary, Luci and Chloe would like to thank everyone who has supported them and for all their wonderful and kind messages of him.



Mary Mountstephen

LEARN, GROW, FLOURISH

**Mary Mountstephen MA (SEN) MA (RES)**

- Specialist in Learning Differences in Children Y1-Y8
  - Former Primary SENCO
  - Free initial consultation
- Different levels of assessment to suit individual needs
  - Individual coaching/ tutoring available
- Multi-sensory approaches that stimulate learning progress
  - Personalised support packs
- Expert at 'solving the learning puzzle'
- Building confidence through success



e:kcsmary1@gmail.com  
m: 07813899348

www.marymountstephen.com



To us, it's personal

Live well,  
*your way*  
with Care at Home

Your home is where you feel the most comfortable and the happiest. It is the place you know the best. If you want to stay living comfortably at home, Home Instead can help make that possible.

**Home Care is Safe Care**

- Home Help • Companionship
- Personal Care • Dementia Care
- Live-In Care

Maidenhead, Henley & Wallingford  
01865 364 418

www.homeinstead.co.uk/wallingford

"Want to join our amazing team?  
Get in touch - we are recruiting now!"



Now only  
**£895\***  
for a fully  
fitted electric  
garage door.

WAS £1,354 INCLUDING VAT.

**Gotta get a Garolla.**

WHAT'S INCLUDED WITH EVERY DOOR:

- FREE EXPERT MEASURING & FITTING
- 2 REMOTE CONTROLS
- ACOUSTIC & THERMAL INSULATION
- FREE DISPOSAL OF YOUR OLD DOOR
- AVAILABLE IN 21 COLOURS



Garolla garage doors are expertly made to measure in our own UK factories, they're strong and solidly built. The electric Garolla door rolls up vertically, taking up only 8 inches inside your garage, maximising valuable space. Our experienced installers will fit your new door and they'll take away the old one too, so there's no mess.

Give us a call today and we'll come and measure up completely FREE of charge.

**GAROLLA**  
ROLLER  
SHUTTER  
DOORS

www.garolla.co.uk

CALL US TODAY ON:  
**01235 280 072**

MOBILE:  
**07537 149 128**

LINES OPEN 7 DAYS A WEEK

\*Offer valid for openings up to 2.6m wide & including 2 remote controls, 55mm white slats, internal manual override.



# Wallingford Museum News

We are delighted that the museum will be open from March 1 2022 with the exception of the Wallingford story, which is under development. Please check the web site for opening times.

[www.wallingfordmuseum.org.uk](http://www.wallingfordmuseum.org.uk)



This year's exhibition, "**Caring for the Sick - A history of Wallingford's Hospitals**" which was devised well before the current crisis, traces the fascinating history of Wallingford's hospitals, caring for the sick in the town from medieval times to the present day. Its portrayal of the challenges of dealing with plague, leprosy, smallpox, scarlet fever and other such outbreaks, as well as more common illness and disabilities, brings the past vividly to light. Ironically, it puts our present troubles in their historic context.

Wallingford Museum has proudly received a painting by GD Leslie on behalf of the nation.

GD Leslie's painting 'A Thameside Conversation' has been acquired for the nation through the Acceptance in Lieu Scheme, which is administered by the Arts Council, and allocated to Wallingford Museum.

GD Leslie (1835-1921) was a well known Victorian artist who lived in Wallingford at Riverside in Thames Street between 1884 and 1891. He was an ardent lover of nature, and particularly of the River Thames and this painting depicts a scene on the riverside, probably at Pangbourne. It was exhibited at the Royal Academy in 1864.

Our amazing exhibit, the new Wallingford castle model is also on display. Created in collaboration with Ben Taggart, Wallingford Museum's dedicated team of researchers have worked with architectural model maker, Ben, to create a 1:300 scale model (1.5m x1.6m) of Wallingford's royal castle as it may have been in the mid-14th century. The Wallingford Historical and Archaeological Society zoom talk on 9th March shares this fascinating journey with its membership. <https://www.twhas.org.uk>

The Museum will running Easter holiday workshops for families. Please watch the web site for details.

[www.wallingfordmuseum.org.uk](http://www.wallingfordmuseum.org.uk)

## MUSEUM BOOKSHOP

We have an excellent selection of good second-hand books (both fiction and non-fiction) at sensible prices. We look forward to seeing you - it's free to browse!

## THE WALLINGFORD HISTORICAL AND ARCHAEOLOGICAL SOCIETY

**9 March (Weds) ~~ by ZOOM ~~ Ben Taggart: 'Modelling Houses, Modelling Castles'**

**13 April (Weds)**

**Marie-Louise Kerr: 'Oxfordshire on Canvas'**

Marie-Louise's presentation 'Oxfordshire on Canvas' is a visual tour of Oxfordshire which looks at how artists, both national and local, have captured our beautiful area and been influenced by it.

*Some of the artists included are:*

- George Dunlop Leslie (who lived and painted in Wallingford)
- Paul Nash (who created many works featuring The Wittenham Clumps)
- John Piper (whose works are celebrated at the River & Rowing Museum)

## The Wallingford Local Producers Market

WLPM is a regular event in many people's calendar. Based at Centre 70, it's their weekly fix of fresh vegetables, cheese, cakes, bakes, coffee and lots of foody treats.

Inside there's even more, with handmade arts and crafts by local makers; there really is something for everyone. One regular market goer recently said "*I'm always so impressed with the variety of creativity and the skill of the makers here. Everything is made with such attention to detail, it's lovely.*"

All of the food and crafts are made locally and the market has a warm and welcoming community feel. So if you haven't found it yet, come and visit on a **Saturday morning between 10am and 12pm**. Starting in March, the market will also be in the **Market Place on every first Saturday of the month** with extended hours **between 10am and 1pm**.

Wallingford Local Producers Market is a great way to shop local, support micro businesses, find unique products and indulge your sweet or savoury food cravings.

# Daniel Hoadley Garden Services



- Hedge Cutting + Reductions
  - Fencing + Repairs
  - Clearance + Tidy up
  - Lawn Mowing + Weeds
- 07498235485**

# TUNELESS CHOIR

*singing like no one is listening*

Tuneless Choirs are for those who have always been told they can't sing in tune but LOVE to do it anyway!



## WALLINGFORD TUNELESS CHOIR

**Singing in person  
every Thursday evening**

St Mary-le-More Church, Market Place, Wallingford, OX10 0EG  
Registration starts from 7.45pm. Singing starts at 8pm.



Price: **£10** the first time you attend for all new members

(Includes registration, song book and singing session)

**£7** pay as you go

or **£5** per session when booking an 8 week block

Contact us:

Tracy Noble on 07843 144737  
wallingford@tunelesschoir.com  
www.tunelesschoir.com/wallingford

Vacuum cleaners - repairs bags & accessories  
Power washers Steam cleaners Carpet cleaners  
Scrubber driers Window cleaning poles Sanders



## CLEAN MACHINE

1 & 2 St. Peters Place, Wallingford OX10 0BG  
**01491 825600 Hire & Sales**  
www.machinesthatclean.com  
e-mail: info@machinesthatclean.com



@cleanmachineltd



find us on  
Facebook

/CleanMachineLtd

# LOVE HAIR? LOVE FASHION? BE A HAIRDRESSER

**Apprenticeships available now!**



Call Forresters: **01491 837 523**  
Drop in: **25 High Street, Wallingford**

**Forresters4hair.com**



**Apprenticeships**

## C. A. HOLTOM Building Contractor

Established 1988

FOR ALL TYPES OF

Building - Extensions - Plastering - Refurbishment

Alterations - Brickwork - Patios - Drainage

Tel: 01491 651141 / 07990912966

Email: choltom1@sky.com

## Tom Cottrell Landscapes

EST 1974 Family Run Business

Telephone: **01491 836974**

**All tree aspects - Dave Cottrell**

- Felling • Reducing • Reshaping
- Thinning, Removal • Pollarding
- Shrub & Tree Pruning • Dead Wood
- Removal Hedge Management
- Stump Grinding

**Garden & Landscaping Services**

- Turfing • Hedge & Grass Cutting
- Planting • Fencing • Patios
- General Garden Maintenance
- Garden Renovation & Construction
- Woodchip Mulch
- Seasoned Logs & Kindling Wood

**www.tomcottrelllandscapes.com**

**Email: tomcottrelllandscapes@gmail.com**

Orchard Cottage, High Road, Brightwell-cum-Sotwell, Nr Wallingford, Oxon OX10 0PS



INSPIRATION CREATION TUITION

1 Ayres Yard, Station Road, Wallingford, Oxon OX10 0JZ  
T: 01491 838005 E: keri@wallingfordflowers.co.uk

[www.wallingfordflowers.co.uk](http://www.wallingfordflowers.co.uk)

## HOWARD CHADWICK FUNERAL SERVICE

A caring family owned and managed Funeral Service

- Dedicated Private Chapel of Rest •
- Golden Charter Pre-Paid Funeral Plans •
- Specialists in Memorial Stones and Designs •

**33 Benson Lane, Crowmarsh Gifford,  
Wallingford OX10 8ED**

**Tel: 01491 825222**

[www.chadwicksfuneralservice.co.uk](http://www.chadwicksfuneralservice.co.uk)



Golden Charter  
Funeral Plans





**You workout. They play.**

**Mum to Mum Fitness classes are so much more than just an exercise class. They are an opportunity to meet like-minded women, form friendships and just have some fun. They are also unique because you can bring your children along with you, so there is no need to arrange childcare. They can enjoy the toys in the baby/child zone, whilst you can enjoy a safe and fun workout! I also run ladies only evening classes that are open to all ladies, not just mums.**

**Here are some of the lovely reviews I have received recently:**

**"Super fun and value for money class that has been a highlight of my maternity leave. Classes are a perfect balance between soft safe play for baby and proper exercise for Mum and enjoyable for both. Jen is a highly professional instructor who explains the circuits and modifications really clearly. She creates a fun and relaxed atmosphere for Mum's at all stages of the post-partum journey and beyond. My fitness has improved lots during these months and I know these classes have contributed greatly to this. Definitely recommend!"**

**"I attended the ladies only class on a Tuesday evening and Jen was incredible! From the communication in advance of the sessions to the sessions themselves, it made me feel comfortable to work out with a group of ladies and take it at my own pace. Jen provided some great alternatives for those who needed them, and I felt like I had gotten a bit of "me" time back! Can't recommend highly enough!"**

**Interested in joining? Why not contact me to book your FREE trial!**

**Jen**

**Owner and Instructor**

**[www.mumtomumfitness.com](http://www.mumtomumfitness.com)**

**Winterbrook Garden Services Ltd**

Garden Design, Construction &  
Maintenance

Fencing  
Patios

Full Pruning Service

Tel: 01491 838189

Mobile: 0775 36 36 333

[winterbrookgs@gmail.com](mailto:winterbrookgs@gmail.com)



**Winterbrook Garden Nurseries**

High Road, Brightwell-cum-Sotwell,  
OX10 0PS

Independent plant nursery  
specialising in herbaceous  
perennials  
& garden curios

[www.winterbrookgardennurseries.com](http://www.winterbrookgardennurseries.com)

[f @winterbrookgardennurseries](https://www.facebook.com/winterbrookgardennurseries) [i](https://www.instagram.com/winterbrookgardennurseries)

# Wallingford Town Council

would like to invite you to celebrate  
The Queens Platinum Jubilee with  
a community Picnic in the Castle  
Gardens on Sunday 5th June,  
11:30am to 3:30pm.

Please come along with your picnic, chairs or rugs and big smiles! Help us celebrate the wonderful achievement of our dedicated Queen Elizabeth 11. A true record breaker!!

Let's make this an occasion for our children to remember, a time when we got together as the wonderful caring community that we are. We have planned some other events over the weekend so please watch this space. Hopefully see you there,

Councillor Ros Lester



Wallingford  
Town Council



## What's on AT THE CORN EXCHANGE, WALLINGFORD

### CINEMA

All regular performances normally start at 7:30pm unless stated otherwise.  
Tickets £8 for Adults and £5 for under 15s unless otherwise stated.

All events now have full seating. This is in line with the practices and guidelines elsewhere. We are asking patrons to still sanitise their hands, and of course wearing a face covering is now mandatory when inside the building. We'll continue to fog all public areas after each performance. We have recently installed new air filters as a safety precaution. We're grateful for patrons for their observation of all the Covid rules that we have implemented in the theatre. Please look out for new updates for the programme on the website [www.cornexchange.org.uk](http://www.cornexchange.org.uk).

### Moonfall; 02/03/2022 - 04/03/2022. 7:30 pm - 9:30 pm

Starring Halle Berry, Patrick Wilson, Donald Sutherland and John Bradley (Game of Thrones).  
A mysterious force knocks the Moon from its orbit and sends it hurtling on a collision course with Earth.

### Showtime 2; 09/03/2022 - 12/03/2022. 7:30 pm - 10:00 pm

The Showtime team are back!  
Featuring the very best of what modern musical theatre has to offer  
Showtime 2 – Matinee; 12/03/2022. 2:30 pm - 5:00 pm

### Royal Opera: Rigoletto; 13/03/2022. 2:00 pm - 6:00 pm

Encore screening from the Royal Opera House, Covent Garden.  
Sung in Italian with English surtitles.  
A new production of Verdi's Rigoletto, directed by Oliver Mears

### Death on the Nile; 13/03/2022 - 17/03/2022. 7:30 pm - 9:45 pm

Kenneth Branagh directs and reprises the role of Hercule Poirot in this star-studded remake of the classic Agatha Christie classic detective tale.

### The Duke; 18/03/2022 - 19/03/2022. 7:30 pm - 9:15 pm

British comedy drama starring Jim Broadbent and Helen Mirren, with Fionn Whitehead and Anna Maxwell Martin.

The Constant Wife; 29/03/2022 - 02/04/2022. 7:45 pm - 10:15 pm. Sinodun Players present the first play of their 2022 season. written by W. Somerset Maugham  
Director: Chris Harris







## The Constant Wife

By W. Somerset Maugham

### A Fizzing Comedy Exploring Sexual Independence

Set in the late 1920's at the height of Art Deco culture and the flourishing progress of feminism, Maugham's frank and fizzing comedy sparkles with Coward-like wit and crackles with arguments about marriage and infidelity; are the sexes programmed at birth – or not? Is sauce for the goose really sauce for the gander?

Constance is the calm, intelligent and self-possessed wife of John Middleton, a successful London surgeon. Friends and family are desperate to tell her of her husband's infidelity - with her own best friend, Marie- Louise. They expect the typical response of the 'wronged wife'. ... But Constance is anything but typical. She is complex, clever and increasingly liberated; a character whose creator was a master both of language and the play of ideas. Her journey will lead her to discover the very core of love, infidelity and equality.

One of Maugham's most captivating creations, the play is as fresh and relevant today as it was in 1926. It holds up a mirror to the audience: how much have our social attitudes really changed, nearly 100 years on, from those of the late 1920's?

Booking is open for this rarely performed funny and thought-provoking play, online at [cornexchange.org.uk](http://cornexchange.org.uk)

#### SHOW DATES, TIMES & PRICES:

**OPENING NIGHT – Tuesday 29 March at 7.45pm**

**SPECIAL OPENING NIGHT TICKET OFFER £9.00**

#### PERFORMANCES:

**Wednesday 30 March to Saturday 2 April at 7.45pm**

**Saturday Matinee at 2.30pm**

## THE COOKHOUSE — DELI — WALLINGFORD

We supply traditional delicatessen styled goods, varying from speciality store cupboard ingredients all the way through to indulgent treats in local cheeses, locally brewed ales and perfect accompaniments to help create the perfect family kitchen.

14 Market Place, Wallingford OX10 0AD

## Wallingford Local Producers Market

Fresh, local food and handmade crafts



EVERY Saturday from 10am – 12noon  
Inside and Outside at **Centre 70**, OX10 0DT

And Now...

In the **Market Place** from 10am – 1pm  
On the first Saturday of the month!

[wlp.org.uk](http://wlp.org.uk)

[@wallingfordlocalproducersmarket](https://www.facebook.com/wallingfordlocalproducersmarket)

# GRACE & GRAVITY

HOWBERY BUSINESS PARK, WALLINGFORD.  
Classes are 60 minutes long unless stated otherwise.

We have a full schedule of classes back up and running at Grace & Gravity Studio based on Howbery Business Park in Wallingford. Our studio offers a tranquil space for yoga, wellbeing and circus fitness classes with plenty of free parking available.

We have yoga classes to suit all ages and abilities, so whether you're looking to sweat, stretch or relax we've got you covered. We also offer Aerial Yoga and Circus fitness classes so you can take your exercise to new heights as well as special population classes such as prenatal and postnatal.

Lastly, it's important to note our gentle Chair Yoga classes designed to help anyone whose health has been affected as a result of Covid-19. We can help regain strength, mobility and flexibility in a safe supportive environment. This class is partially subsidised by South Oxfordshire Council as part of the Move Together campaign.



## THE GEORGE Tavern BAR + KITCHEN

### £10 Special



## Moules-frites £10

High Street - Wallingford - Oxfordshire - OX10 0BS  
e-mail: [info@george-hotel-wallingford.com](mailto:info@george-hotel-wallingford.com)

# Café Delorme

Fresh ground coffee and drinks

Doughnuts and pastries baked fresh daily

Takeaway menus with weekly specials Wed - Sat to order

Dining In from end June

Authentic French Bistro Evenings one Friday each month

**Book on Facebook or 01491 651088**

Café Delorme, 2 The Pound, Cholsey OX10 9NS



## Red Lion

Brightwell cum Sotwell

Corinne & Mouse Welcome you.

*Pop in and Say Hello*

The Street, Brightwell-cum-Sotwell, Oxfordshire OX10 0RT

01491 837 373

[www.redlionbrightwell.co.uk](http://www.redlionbrightwell.co.uk)

FB: RedLionBrightwellcumSotwell

## Avanti ITALIAN

RESTAURANT



Dining In  
Takeaway  
Delivery Service

Tuesday to Saturday

Order online  
[avantiitalian.com](http://avantiitalian.com)  
or call 01491835500



EST. 1995

## Mr & Mrs Park's

FAMILY BUTCHERS

High welfare local produce

Knowledgeable and friendly service

A great range of local cheese, wines and much much more.

Check out our website or follow us on Facebook or Instagram to learn more.

5 The Pound, Cholsey, Wallingford, Oxfordshire, OX10 9NS  
01491 651300 • [info@mrandsrmparks.co.uk](mailto:info@mrandsrmparks.co.uk) • [www.mrandmrsparcs.co.uk](http://www.mrandmrsparcs.co.uk)

## COFFEE CULTURE

Where children can play and you can relax



GOOD COFFEE | SOFT PLAY AREA | GREAT FOOD

**OPEN TUESDAY TO FRIDAY 9.30AM - 3PM**

Royal Standard · 32 St Marys St · Wallingford OX10 0ET

GREAT FOOD, FINE LOCAL ALES AND A WARM WELCOME AWAIT AT THE ROYAL STANDARD PUB, ALONG WITH SKY AND BT SPORTS SO YOU CAN FOLLOW ALL THE LATEST SPORTS ACTION

**PROBABLY THE BEST  
SUNDAY ROAST IN TOWN!**

CALL 01491 599105  
[ROYALSTANDARDWALLINGFORD.CO.UK](http://ROYALSTANDARDWALLINGFORD.CO.UK)



**ROYAL  
STANDARD**

**WALLINGFORD'S ROYAL: ANYTHING BUT STANDARD!**

## SUNDAY ROAST

SHILLINGFORD BRIDGE



2-Course Roast

Join us on the River Thames at Shillingford Bridge Hotel!



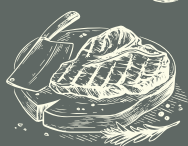
@shillingfordbridgehotel

Shillingford Bridge Hotel,  
Wallingford, OX10 8LZ

E: [reservations@shillingfordbridge.co.uk](mailto:reservations@shillingfordbridge.co.uk)

T: 01865 858567

**£19.50**  
per person



Shellfish Com  
Restaurant & Bar

28 High Street  
Wallingford

[www.shellfishcom.co.uk](http://www.shellfishcom.co.uk)

01491 832 807

[wallingford@shellfishcom.co.uk](mailto:wallingford@shellfishcom.co.uk)



## Wallingford Wine of the Month

Spring is in the air, and with a little more sunshine comes the promise of lighter meals, fewer layers, and all things zesty and fresh. As happens every Spring, I find myself drawn even more to a personal favourite bottle - the Rezabal Txakoli.

This wine is in every sense an outsider. It is produced in the Basque region of northern Spain, the local equivalent of homebrew to be served to guests at the communal Txokols, the dining clubs that give the wine its name. The name itself is unfamiliar to the English eye, pronounced "cha-koh-lee"; and the grape is Hondarrabi Zuri, small and tough. It thrives despite the rocky soil and cool, wet conditions of the northern Atlantic coastline. The alcohol is always low, with this vintage a refreshing 11%. But despite this outsider status, it is a staple to those of us who love it: there really is nothing like it.

The most obvious thing you'll notice when the first splash of wine hits the glass is that it sparkles. Not a full fizz by any means, but a real effervescent spritz. The next is the pale colour, almost green in its delicacy, another indication of its youthful zest. Then the aromas: green apples, lemongrass and sea herbs. Forward but not overbearing, the nose is intense and inviting. Finally on the palate, mouthwateringly fresh, deliciously saline and full of bright lemony fruit. It's definitely a dry wine, but complex and layered, and with more body than you might expect, due to a brief period of resting on its lees. While it's light and drinkable, it's far from thin.

This is the kind of wine that you could serve as an aperitif to tease and enliven the tastebuds, or at lunch, light enough to be a comma on the day rather than a full stop. And being a wine from the heart of tapas country, it's a fantastically versatile food-pairer - equally well suited to seafood, salads, or herby white meats.

In the wine world, there can be a tendency to get over-excited about newly discovered wines, before returning sheepishly to the classics. This is definitely not that kind of wine. I've loved it for years, and nothing else is like it. Pop in and try it for a little less than usual: I promise you won't be disappointed.



**Michael Jelley is the Director of Grape Minds Wallingford**

**Wine Name:** Rezabal Txakoli

**Producer:** Rezabal

**Grapes:** Hondarrabi Zuri

**Region:** DO Getariako-Txakolina

**Exclusive Price:** £13.99/bottle until the next issue.

**Just mention Window on Wallingford in store!**

# GRAPE MINDS

**Party Time? Let the good times flow with the perfect drinks from Wallingford's specialist wine merchant!**

Are you hosting an event this summer? Let us make it simple with a great selection of wine, spirits and beer for all occasions and budgets.

We've filled the shop with things we love, so if you need to know what works well with a particular dish, or what to drink while chatting, dancing or just enjoying the sunshine, we can help!


To make it even easier, we offer:

- Free glass hire
- Free delivery
- Free wedding tasting
- Sale or return

Drop in for a chat or give us a ring; we'll make sure your party goes with a swing!



10 St Martin's Street, Wallingford OX10 0AL 01491 824549 wallingford@grapemindsdrinkalike.co.uk

**CRANFORD HOUSE**

Excellence in Independent Education  
for Boys and Girls aged 3 - 18  
[www.cranfordhouse.net](http://www.cranfordhouse.net)

Book your  
**PERSONAL TOUR**  
Welcome!

# Come and join us!

Discover what makes Cranford an extraordinary start to school life  
*Specialist teaching, excellent facilities and outstanding pastoral care.*

## HAVE TROUBLE WITH YOUR TREES?

NEED SOME HELP? ASK THE EXPERTS

- Tree removal
- Tree thinning
- Stump grinding
- Hedge trimming
- Tree pruning
- Tree felling
- Landscaping
- Fencing

We are city & guilds nptc qualified and insured you can feel safe dealing with us.

Call now to see how we can help Free no obligation quote

### 1<sup>st</sup> CLASS TREE SURGEONS

E. [quote@firstclasstreesurgeons.co.uk](mailto:quote@firstclasstreesurgeons.co.uk)

T. 07889 881 525  
[firstclasstreesurgeons.co.uk](http://firstclasstreesurgeons.co.uk)

## ADP FLOORING

**Adrian Pitson**

Carpet, Vinyl, Wood, LVT Flooring expertly fitted

• Over 30 years experience • Supply & fit • Professional & reliable

[adpflooring@hotmail.com](mailto:adpflooring@hotmail.com) • 07528 210 562



**GREENGARDEN**  
GARDEN MAINTENANCE

Experienced RHS Trained Gardener. I offer a specialist garden maintenance service, to include the basic services of mowing, pruning and weeding. Specialising in the overarching care and vision to keep the garden looking lively throughout the year.

Please call Dan on 07910 001 288

## Mallams 1788

Thinking of selling your Jewellery?



Mallams' specialist Louise Dennis FGA DGA, is available to give **free** confidential valuations on any piece(s) you are considering selling at auction.

**Home Visits also available**

Enquiries: 01865 241 358 or [louise.dennis@mallams.co.uk](mailto:louise.dennis@mallams.co.uk)  
[www.mallams.co.uk](http://www.mallams.co.uk)



**HAYNES**  
Car Care Centre

servicing...batteries...tyres...fantastic value

Bushells Business Park, Lester Way,  
Wallingford Oxon OX10 9DD

[www.haynes-car-care.co.uk](http://www.haynes-car-care.co.uk)

- All Makes Servicing and MOT's
- Parts & Accessories
- Air Con Re-Gas
- Courtesy Car
- Batteries & Tyres
- 4 Wheel Laser Tracking



Proud Sponsors of Wallingford Vehicle Rally & BunkFest

**01491 836 097**