

WOW



CORN EXCHANGE (ERECTED A.D. 1856)

THEATRE & CINEMA
CORN EXCHANGE
CIRCUIT


HOMEBASE
PROPERTY
RESIDENTIAL | COMMERCIAL

It's our turn to move.
Opening January
1 Market Place

C. A. HOLTOM Building Contractor

Established 1988

FOR ALL TYPES OF

Building – Extensions – Plastering – Refurbishment
Alterations – Brickwork – Patios – Drainage

Tel: 01491 651141 / 07990912966

Email: choltom1@sky.com



Illumin-Nation Ltd
5 St Peters Place, St Peters Street
Wallingford, Oxon OX10 0BG

allan.priddle@btconnect.com
www.illumin-nationltd.co.uk 01491 833505



Fireplace Magic
Stoves & Fireplace Sales

- Solid fuel, gas or electric fires
- Installation
- Chimney sweeping
- Woodburner servicing
- Chimney lining
- HETAS registered

Visit our showroom at
45 Prospect Street
Caversham RG4 8JB
Tel: 0118 9463060

www.fireplacemagic.co.uk



Masterfloors
Contract and Domestic Flooring Specialists

20 St. Martin's Street
Wallingford
Oxon. OX10 0AL
Tel: 01491 833701
Free estimates

www.masterfloorswallingford.co.uk

nicf
National Institute of Carpet & Nonwovens



HOMEBASE
PROPERTY

★ WHATEVER YOUR PROPERTY NEEDS ★

SALES

LETTINGS & MANAGEMENT

01491 824470 | info@hb-pm.co.uk
1 Market Place, Wallingford, OX10 0EG



Bathroom Showroom

Call Now
01491 377 272
35 Wallingford Rd, Goring
Wallingfordtilesandbathrooms.co.uk

Wallingford
— TILES & BATHROOMS



Aspa
SCANDINAVIAN INTERIORS

Interior design service | Fabrics | Wallpaper
10 St Mary's St Wallingford
www.aspainteriors.co.uk aspa_interiors

To advertise in Window on Wallingford please contact us on: info@windowonwallingford.co.uk

Adverts:

Must be sent in JPEG or PDF formats in their highest quality.

Advert sizes:

- 95 mm x 53 mm
- 95 mm x 110 mm
- 192 mm x 50 mm
- 210 mm x 297 mm
- 210 mm x 148 mm

Articles:

Supplied in MS word. Please provide any photos or images including logos separately (jpeg files) that you would like in your article.

Deadline date to submit: 8th January

Editor: Naomi Reddyhoff

info@windowonwallingford.co.uk

Marketing, Accounts & Administration: Jessica Dovey

jess@windowonwallingford.co.uk

Distribution: Naomi Reddyhoff

info@windowonwallingford.co.uk

Cover painting: Mandy Reekie

www.oxfordshireprints.co.uk/collections/mandy-reekie

 [@windowonwallingford](https://www.facebook.com/windowonwallingford)

 [@window_on_wallingford](https://www.instagram.com/window_on_wallingford)

Whilst every effort is made to ensure the accuracy of information printed in the magazine, the Editor and \Publisher do not accept any responsibility for the consequences of any errors that may occur. Material published in the Window on Wallingford Magazine is copyright, but normally the Editor will be pleased to grant permission for it to be reproduced, if asked on each occasion. The opinions published in this magazine are not necessarily those of the Editor, Publisher or WoW.

Adverts will continue to run unless cancelled.



Hello Everyone

We hope you had a lovely Christmas and a very Happy New Year to you all. Here's to an awesome 2023.

Some sad news: Lesley who has looked after our advertisers for over 2 years now is retiring. I am going to miss her, guidance, advice, and ideas very much indeed. I want to say a HUGE thank you to Lesley for everything she has done for WoW and wish her all the best. I will miss you.

If you'd like to get involved with WoW on the advertising side, please get in contact with us. We are also looking for a Distribution Manager. All change for 2023!!

Have you booked your tickets for the Panto,Oh no you haven't..... Oh no you must.....Always great Fun.

Lots of clubs and hobbies are starting back after the new year, look at our what's on Section and advertisers for information on what you can get up to in and around Wallingford. There is always lots going on.

Want somewhere to go for a coffee, lite bite, drink or dinner, our Dining Out section has some fabulous local venues to try.

Have a fabulous January, keep warm, have fun stay safe

Naomi x



10% OFF
a treatment
with this
advert

Pure Elegance
BEAUTY & HOLISTIC THERAPY EST. 2008

15 years experience
 Massage - Facial - Shellac - Ear Piercing - Waxing - Pedicure and more

Contact Lucy to make an appointment
07590983370
pure_elegance@hotmail.co.uk
www.pureelegancebeauty.co.uk



LANCE THOMPSON
FRIENDLY RELIABLE SERVICE

For All Your Decorating Needs • Call For A Free Estimate
07780 221950
lance.sunshine@btopenworld.com • www.sunshinedecorating.co.uk

 [@sunshinedecorator](https://www.facebook.com/sunshinedecorator)  [@sunshine_pd](https://www.instagram.com/sunshine_pd)

FULLY INSURED | CHOLSEY, OXON

 **Skip Hire
Caged Tipper
Waste Management**

☎ 01235 760555

✉ info@aasvogel.co.uk 🌐 www.aasvogel.co.uk

[Mention Window on Wallingford when you call]

 **WATER'S EDGE**
PLUMBING & HEATING

Plumbing and Heating Services

Based in Crowmarsh, fully qualified and insured.
Contact our friendly office team for a quick response
to your requirements or to arrange your **FREE QUOTE**

01491 821 626

www.watersedgeuk.co.uk | contactus@watersedgeuk.co.uk

- General Plumbing
- Leak Repair
- Central Heating
- Boiler Repairs
- Boiler Installations
- Shower Installations
- Powerflushing
- Gas Safety Services
- Underfloor Heating
- Estate Agent Services

Proud members of  **Checkatrade.com** 
Where reputation matters

 **Electrical
Plumbing
Fire and Security**

Call: 01491 835875

Email - reception@groupga.co.uk
Unit H Moses Winter Way, Wallingford, OX10 9FE

**THE POSITIVE
OUTCOMES GROUP**

**We're your
computer
support store
in Wallingford.**

PC TECHNICIANS

WINDOWS | APPLE | ANDROID

Unit B, The Croft, Whiteley Road,
Wallingford, OX10 9RG

Open Mon-Fri 8:30am-5:30pm

Free
Parking

**REPAIRS &
INSTALLATION**

PC Technicians offer fixed price services in-store, on-site, and over the Internet via remote access. We cover everything from virus removal to data transfer.

**CLICK &
COLLECT**

100's of products handpicked by us available for sameday click & collect. Everything from cables, mice, keyboards and laptop bags to hard drives, ink and toner.

Tel: 01491 825449
www.thepctechicians.co.uk

WHAT'S ON!

Wallingford Photographic Club

As winter progresses, Wallingford Photographic Club continues to enjoy a mix of online and in-person meetings (the latter at Crowmarsh Pavilion). Our inclusive club allows people of all ages and levels of experience to learn how to improve their photography through conversations with other members, presentations by visiting speakers, practical evenings and competitions. **The club meets every Thursday at 7.30pm for an 8pm start (7.45 start on competition evenings and online sessions).**

2023 kicks off with a members' evening, called '8x10' where eight members talk for ten minutes about some images, a technique, or a genre or some kit close their hearts. Then on 12th we head online to learn how to publish a photo book, with Joe Houghton. Back to the Pavilion on the 19th when Julian Elliott will show us the people and architecture of Uzbekistan, and the month ends with another competition (with 'no set subject').

Wallingford & District Art Club

Wallingford & District Art Club are delighted to welcome back live in-person demonstrations for the first time since December 2019. Claire Cross will be our guest artist at 7.30pm in Centre 70 on Tuesday January 17th when she will be creating a Spring painting in acrylics and chalk pastels. Claire is a self taught artist who enjoys working in a variety of media and exploring how they combine. She is inspired by wildlife and landscapes, turning her own photos into paintings back in the studio. She also tutors for the club at Centre 70 every Tuesday morning. Visitors are welcome to the demo evening, entry is £3 for non-members. The demo will also be transmitted via Zoom for those unable to get to the venue, for information please contact admin@wallingfordartclub.org.uk. If taking up painting is your New Year's resolution and you would like to discover all the benefits of becoming a club member, please check out our website at www.wallingfordartclub.org.uk

Wallingford Allotments and Gardens Society (WAGS)

Happy New Year to all local gardeners and allotment holders!

From February until the end of July, the **WAGS Garden Store is open every Saturday 11am-12 noon in Centre 70** near the Kinecroft and car parking is available.

We have good levels of stock on peat-free composts, fertilisers and nutrients, weed and bug control, plants supports, plant canes, labels, grass seed, netting, membrane, fleece, ornamental bark, horticultural grit, aquatic supplies, grow bags and more. Our delivery of seed potatoes and onions sets is due in February. Come along and join or renew membership at £4 for the year per household. We also have the Dobies Seed and Plant catalogue available with a members discount code on seed orders.

Our news and updates are posted on Facebook <https://www.facebook.com/WallingfordAGS/> or get in touch by calling our Chairman Sandra on Tel **01491 836527**.
Happy Growing and roll-on Spring time!

Winter Recitals Wallingford

Star pianist Anita D'Attellis is back with a fifth series of four concerts with her friends between January and March. The first is on Saturday 21 January when Anita appears on her own with Bach's Goldberg Variations as the headline work. Anita's solo recitals have always been a big draw, so what better to brighten a dark winter's night than this?

This will be at **St. Mary's Church, Wallingford, starting at 7:30pm**. Tickets are £15 and we encourage you to book online. Please go to www.anitapiano.com/wrw23 for further details and to www.ticketsource.co.uk/wrw23 to book tickets. Call me, Roger Morgan on **01491 837494** if you get stuck!. As in previous years, the proceeds will be shared between St. Mary's Church and Sue Ryder.

Wallingford Accessible Boat Club Launches Promotional Video

The Wallingford Accessible Boat Club (WABC), with its Wheelyboat WOW-one, has today launched a new Promotional Video that promises to add even further interest to the work of the Charity.

The video beautifully illustrates the operation of this unique facility on the Upper Thames and one that makes a real difference to the quality of life of disabled people in and around South Oxfordshire.



This short Video is available on the front page of the WABC website, www.wabc.org.uk, and includes interviews with trustees and volunteer crew members which describe the objectives of the charity as well as highlighting the unique features of the wheelyboat, WOW-one, and the access for disabled people they enable. The passenger interviews included underline the pleasure and enjoyment - even wonder - that the opportunity of a small boat trip can bring to young and old alike. The wonders of the river are now available for all!

John Jenkins MBE, Chair of Trustees, WABC commented: *"I am really excited by this video. It gives me great pleasure to watch it as, for me, it engenders the peace and tranquility of the river and gives a great taster of what a boat trip on WOW-one is like. I am very grateful to the author Henry Crowther who very kindly offered his services pro bono - he has done a great job for us."*

Winterbrook Garden Services Ltd

Garden Design, Construction & Maintenance

Fencing
Patios

Full Pruning Service

Tel: 01491 838189

Mobile: 0775 36 36 333

winterbrookgs@gmail.com



Winterbrook Garden Nurseries

High Road, Brightwell-cum-Sotwell,
OX10 0PS

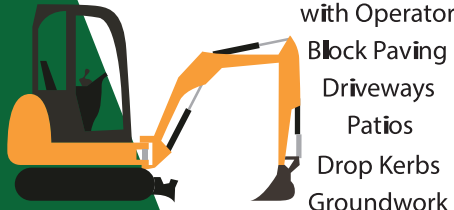
Independent plant nursery
specialising in herbaceous
perennials
& garden curios

www.winterbrookgardennurseries.com

@winterbrookgardennurseries

G.R. Galliford

Graham
07762 650 809
01491 824583



Mini Digger
with Operator
Block Paving
Driveways
Patios
Drop Kerbs
Groundwork

g.galliford@btinternet.com

Benson Angling Centre

Your Friendly Local Angling Centre

Unit 3, Benson Waterfront,
Benson Wallingford OX10 6SJ

Tel: 01491 838288

Email: dibby1949@yahoo.co.uk



Stockists of Drennan E.S.P. Dynamite Baits, Sticky Baits, Baitech, Dead Baits and Live Baits Available. We buy and sell all used angling items

SHOE
REPAIRS

ENGRAVING

KEY
CUTTING



FEET FIRST



21 St. Mary's Street, Wallingford
Contact Gary on: 01491 825224

WATCHSTRAPS
BATTERIES

STITCHING
REPAIRS

TRAVEL GOODS
LUGGAGE

A.G.CURTAIN DESIGN LTD

www.agcurtaindesign.com



Made Exclusively For Your Home
Bespoke Curtains & Soft Furnishings

- 15 years serving clients in South Oxfordshire
- 1,000's of design lead fabrics to choose from
- Expert making and fitting service
- Curtains & Soft Furnishings
- Poles - tracks - finials & tie backs
- Cushions - lamp shades & headboards
- Made to order promptly & efficiently
- Free measure & quotation service

BEAUTIFUL
CURTAINS, BLINDS
&
SOFT FURNISHINGS
01491 834238



Blinds & Shutters
Modern & Contemporary

- Wooden & Venetian
- Roller & Vertical
- Perfect fit & Faux Wood
- Made to fit your windows
- Inside & Outside recess fit
- Manual & Remote controls
- For all rooms in your home or business

VISIT OUR RETAIL STORE AT 3 ST, PETERS PLACE, WALLINGFORD, OXON. OX10 0BG



Wallingford Tyres & Exhausts



**FRIENDLY, PROFESSIONAL SERVICE
AT COMPETITIVE RATES**

PHONE: (01491) 824145 FOR A QUOTE

or call in at: AYRES YARD, STATION ROAD,
WALLINGFORD, OXON.

OR BY APPOINTMENT OUTSIDE WORKING HOURS

Mon.-Fri. 8.30 a.m.-5.30 p.m. Sat 8.30 a.m.-1.00 p.m.

(Just past the Esso Garage on the way to Didcot)



Funerals / Weddings / call or click and collect / national orders

1 Ayres Yard, Station Road, Wallingford, Oxon OX10 0JZ
T: 01491 838005 E: wallingfordflowers@gmail.com

HOWARD CHADWICK FUNERAL SERVICE

A caring family owned and managed Funeral Service

- Dedicated Private Chapel of Rest •
- Golden Charter Pre-Paid Funeral Plans •
- Specialists in Memorial Stones and Designs •

33 Benson Lane, Crowmarsh Gifford,
Wallingford OX10 8ED

Tel: 01491 825222

www.chadwickfuneralservice.co.uk



Golden Charter
Funeral Plans

Benson House Care Home proud to receive a 'Good' CQC rating

Following the Care Quality Commission (CQC) inspection at Benson House Care Home the residents and team were proud to receive a 'Good' rating in all five key areas (safety, effectiveness, caring, responsiveness and well-led).

Caring Homes' Benson House, a nursing, residential and dementia care home, was praised for providing "compassionate care", with relatives commenting, "the staff are very approachable and caring" and "staff are caring, and they look after my mum well."

In the report, staff were found to "do all they could to promote independence and access to healthcare services, ensuring a holistic level of care was provided." It was also highlighted in the inspection that staff demonstrated a "commitment to people", and "displayed strong person-centred values", mentioning that "staff supported people in the least restrictive way possible and in their best interests".

Priding themselves on taking the time to listen to the individuals and families of those they care for, relatives praised the staff for their attention to the ongoing care of the residents. Informing inspectors that staff support them in a personalised way with comments such as: "The staff did a care plan and information about her likes and dislikes."

Benson House registered with the CQC on the 25th of February 2021, making this the home's first formal inspection.

Caring Homes' Benson House's home manager, Cathy Deocadez, said: "We're absolutely thrilled with the results of our recent and first ever CQC report. The entire team here at Benson House work extremely hard to ensure that our residents are receiving the highest quality care and continue to embrace our shared vision for continual improvement.

"The most recent CQC report illustrates Benson Houses' dedication to providing the high standards of care and support that our residents and their families expect and deserve. It is our mission, as a team, to build on the report and work to continuously improve how we meet the needs of our residents.

"Caring Homes invests constantly in its teams to ensure that they are well trained and organise regular resident-led activities that the whole home will enjoy. It is a privilege to work amongst such a dedicated team and we are eager to see what the future holds for us."

Benson House



CARING HOMES



The luxurious Benson House stands in a leafy and private setting with delightful views of the river Thames, located in Benson near Wallingford in rural Oxfordshire but accessible to village amenities.

Significant investment in leading technology and design includes acoustic monitoring, silent call systems, and the first-to-market use of stable-style bedroom doors, combining safety along with interaction for those living well with dementia. It is also the only home in the area where all team members undergo dementia training.

View our home

Our home is open for viewings and we're welcoming new residents and their families safely. Call freephone 0808 223 5401 to find out more about our home and the care we offer.



Proud to be rated 'Good' by the
Care Quality Commission

Freephone

0808 223 5401

Online

caringhomes.org

Churchfield Lane, Benson, Wallingford, Oxfordshire OX10 6SH



Benson House

CARING HOMES

David Johnston MP - January 2023

Happy New Year! The run up to Christmas in Parliament involved a lot of debate about the Levelling Up Bill and changes to the planning system. As Michael Gove's PPS at the Department for Levelling Up, the rules mean I've not been able to comment about this publicly, but the Bill will do many important things, like end the requirement for councils to demonstrate a '5-year land supply' if they have an up-to-date local plan. There was a lot of debate about housing targets set by central government. Targets have their place, but the way in which they have operated has too often forced homes into areas where local people feel they are not needed.



Under the changes, while there will still be central calculations for housing numbers, they will be advisory, and local authorities will determine how many homes can be built, taking into account what should be protected in that area, from the Green Belt to heritage assets.

Areas that have 'overdelivered' on their housing numbers, which has often been the case with South Oxfordshire and the Vale, will be able to make the case to lower the number they need to plan for.

The Government will also consult on allowing councils to refuse applications from developers who have built too slowly; end the duty that lets cities impose their housing needs on surrounding areas; and will look at further measures to incentivise brownfield land being built on over greenfield land. These are all things that are very welcome for this area.

As you may have seen I am supporting the new Cornermen initiative down at South Moreton Boxing Club to help tackle mental health problems among men. Too often men bottle up their feelings instead of talking about them and it's part of the reason they have a higher suicide rate than women. Steve and John are getting men down to the club to try boxing and talking to them while they do it, referring them to services as appropriate. They'll even pick them up. It's a very worthwhile cause and I was pleased to get the BBC down to cover it, filming me throw some punches myself!

Some other things in brief. I've been campaigning on behalf of the AEAT Pensioners locally and have secured a breakthrough for them - watch this space! I'm working to support access to cash in Wallingford, which has been chosen as 1 of 12 pilot areas for new approaches to access cash. I've brought Sharon Gaffka who campaigns on drink spiking, with 16-year-old Niamh, who came to see to campaign against negative behaviour from boys and men, together to join forces and am pleased Sharon will help Niamh. I've had a series of enjoyable visits to Parliament from schools like Wallingford School, Drayton Community Primary and Aureus School as well as Ukrainian refugees in recent months - do get in touch if you'd like to bring a group down or if I can help with anything else via david.johnston.mp@parliament.uk

Warm up this winter at Oxfam Wallingford! The heating is on and our arms wide for you to join us this winter. We have lots of opportunities in different roles to suit you and help you find your place in our fabulous, friendly team. Come in and see us, the kettle's on and the biscuits are ready!

Rosie, shop volunteer

At Oxfam, whatever your skills or interests, there's something for everyone...

The Oxfam clothing and homewares shop is currently looking for new volunteers to join our fabulous and friendly team. The winter months can be long, cold and lonely so if you have some spare time you can meet new people, make friends, and most importantly help us raise vital funds for those living in poverty.

We have a range of standard roles and some more specialist opportunities too. We like to give volunteers an opportunity to try a range of areas before they find something that suits them. You might become a shop cashier, sorter and pricer, or you might find yourself in a more specific role such as an Online lister, Social media volunteer, an Admin support volunteer or even a Lead volunteer.

No previous experience is needed for these roles. When you apply we will ask you to come in for an initial chat to get an idea of what you'd like to do in the shop. From there you can meet the rest of the volunteer team and get involved with whatever area of the shop takes your interest. Volunteering at Oxfam is the perfect way to keep warm and to gain new skills, whether you're looking to improve your CV, take on a new challenge or just have fun!

At Oxfam, we are committed to ensuring diversity and gender equality within our organisation and encourage applicants from diverse backgrounds to apply. Apply online <https://www.oxfam.org.uk/shops/oxfam-shop-wallingford/> or pop in for a chat and pick up a volunteer application form. Call us on **01491 834179** or email oxfamshop3733@oxfam.org.uk

We look forward to welcoming you soon
Best wishes Madeleine, Mandy and the volunteer team.



OXFAM

In House Estate Agents, which serves the Wallingford and Didcot community, has raised more than £3,000 for Sue Ryder Palliative Care Hub South Oxfordshire

They have since donated a total of £3,124.80, which is the equivalent of 148 hours of expert care for patients supported by the hub's Sue Ryder Nurses, healthcare assistants, doctors, physiotherapists, occupational therapists, family support team and befrienders at home in the community.

Tom Horsfield, Senior Community Fundraiser at Sue Ryder Palliative Care Hub South Oxfordshire, said: "We're so grateful to In House for choosing to support us over the last 12 months and we look forward to continuing our partnership into 2023."

Steve Puddifoot, the owner of In House, said: "Sue Ryder Palliative Care Hub South Oxfordshire provides a vital service for families in our community who are going through the most difficult times. We know that they will have touched the hearts of many of our clients at some point in their lives. We were delighted to have raised this amount over the last year and it was an easy decision to extend our partnership. Everyone at In House remains committed to championing such an amazing cause."

Corporate partners play a key role in working to ensure that Sue Ryder can be there for people during the most difficult times of their lives. If you would like to find out more you can get in touch by contacting the Sue Ryder Palliative Care Hub South Oxfordshire fundraising team on **01491 522 818** or by emailing southoxfordshire.fundraising@sueryder.org.



Wallingford Methodist Church

Sunday 4th December saw a heavenly host of angels descend on Wallingford Methodist Church in time for the 10.30am service.

The people from the congregation and friends and anybody we could get to knit for us managed to make almost 2000 angels for distribution to the wider community of Wallingford and the community. Each person was given an angel, by one of 2 beautiful angels who were helping me out at the service. Everyone was informed that they are not for themselves but to be given away to somebody they feel might need a little lift, especially as Christmas can be a difficult time for some people.

Some visitors came into the church after the service and were so touched by the displays that they each took an angel home back to Somerset and Wiltshire. Angelic hosts know no boundaries. We blessed a big, friendly furry fairy who wished to be an angel and that one has been despatched to Ukraine as our special friend is going home for Christmas. I trust the new angel will perform their tasks to the best of their ability. We came to the conclusion that angels don't always come with wings and the ones without wings are called friends.

The remainder will be distributed about the town and villages in various ways with little messages attached to them to bring hope and cheer to many people.

Maggie Blake



Wallingford Methodist Church

St Leonard's Square, OX10 8AS

**Sunday Worship 10.30 am
EVERYONE WELCOME**

The resumption of other activities is planned
Please check the notice boards outside the church for details
or the website www.wallingfordmethodistchurch.org.uk
Contact our minister, Rev. Jocelyn Bennett, with any enquiries.

Tel 01235 813242 email jocelynbennett@methodist.org.uk

One of the key aims of the u3a movement is to provide opportunities for people to socialise and make new friends. Our monthly coffee mornings are very popular and we had rather outgrown our previous venue so at the suggestion of a new(ish) member we moved the venue to the Methodist Church in St. Leonards Square on a two month trial. This proved so successful that almost twice as many members came along, and we have now decided to make this a permanent move.



Our final events for 2022 were a Christmas entertainment by "Bob and Dot" for the speaker meeting and an outing to "A Christmas Carol" at the RSC theatre in Stratford-upon-Avon. During the past year our talks have covered a wide variety of subjects including history, wild-life, fashion and poisons. This year promises to be just as interesting and varied.

In January we have our annual Celebration Lunch at the Badgemore Golf Club; and the speaker meeting talk at St Marys Church is titled "**Georgi Markhov and the poisoned umbrella murder**". In February the regular monthly outings will resume.

Monthly coffee mornings are now held in the **Methodist Church on the 1st Friday of the month from 10.30am to noon** and are an opportunity for members to get together, and for potential members to find out about our activities. Our speaker meetings are on the **3rd Wednesday at St. Mary-Le-More church at 2pm**.

To find out more about this u3a please visit our website at: www.wallingfordu3a.org where you will find contact links.

Neil Kelly, u3a Committee

CHEMISTRY TUITION - JASMINA HARRISON

Chemistry tutoring by a highly experienced former Head of Department at a local independent secondary school



Tuition at secondary level including GCSE, A level & IB
Offering personalised tuition at my home in Dorchester or can visit students in Dorchester, Benson, Wallingford and Goring areas.
In person and online.
Skilled in building confident students at all levels of Chemistry, enabling them to achieve their potential.

07753816716 • jasmina@rwhconsulting.uk

LOVE HAIR? LOVE FASHION? BE A HAIRDRESSER

Apprenticeships available now!



Call Forrester's: **01491 837 523**
Drop in: **25 High Street, Wallingford**

Forrester's4hair.com



Tom Cottrell Landscapes

EST 1974 Family Run Business

Telephone: **01491 836974**

All tree aspects ■ Dave Cottrell

- Felling • Reducing • Reshaping
- Thinning, Removal • Pollarding
- Shrub & Tree Pruning • Dead Wood
- Removal Hedge Management
- Stump Grinding

Garden & Landscaping Services

- Turfing • Hedge & Grass Cutting
- Planting • Fencing • Patios
- General Garden Maintenance
- Garden Renovation & Construction
- Woodchip Mulch
- Seasoned Logs & Kindling Wood

www.tomcottrelllandscapes.com

Email: tomcottrelllandscapes@gmail.com

Orchard Cottage, High Road, Brightwell Cum Sotwell, Nr Wallingford, Oxon OX10 0PS

Paddocks Pre-School

Paddocks Pre-school
Paddock Road
Wallingford
OX10 9LT
www.paddockspreschool.com

A friendly preschool environment offering a wide range:

- Flexible sessions for 2 – 5 year olds
- Universal 15 hours funding for 2, 3 & 4 year olds
- Extended 30 hours funding for 3 & 4 year olds
- Large Garden & Forest School
- After school care available
- Holiday play schemes for 2-8 year olds



For more information or to arrange a visit, please call **01491 825333** Charity Number: 1001964
or email info@paddockspreschool.com

Your pace Fun/Friendly
ZUMBA
gold
Keep Grooving
Low Impact
uplifting dance
fitness class.
First class FREE! £7 Per Class
WALLINGFORD
MASONIC CENTRE
Every Monday & Thursday 10-11am
Easy to follow routines
Welcoming
MAKING PINK TO FIND A
Contact Sue for more information:
suerichmondjr@hotmail.co.uk
07901 673700

JIM PINK

Service Centre and Car Sales
15 Wood Street, Wallingford OX10 0AY



HYBRID/ELECTRIC SPECIALISTS

- Free Battery Check
- Free Light Check
- Free Antifreeze Check
- Annual Service
- Batteries from £49.95 + VAT Fitted Free
- MOT testing
- 4 Wheel Laser Tracking
- Air Con Servicing (Inc. RI 234YF type)
- Air Conditioning Regas from £69 inc VAT
- Diagnostics
- Tyres fitted at very competitive prices
- We now have a fully qualified technician to work on Hybrid/Electric Cars

FREE COLLECTION or we can provide a COURTESY CAR
Call **01491 836017 • 01491 836022 • 07342 630396**
email info@jimpink.co.uk www.jimpink.co.uk

customer care without compromise

CHEQUERS GARAGE



Fullers Road, Aston Tirrold,
Oxfordshire OX11 9EN

info@chequers-garagedidcot.co.uk
www.chequers-garagedidcot.co.uk

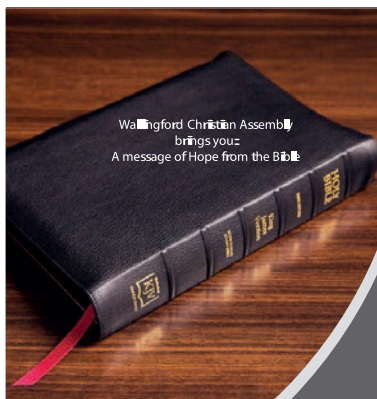
At Chequers Garage we look after our customers as well as their cars. That's why we have courtesy cars, offer local collection and delivery, explain your invoice in plain English and every car is washed before it is returned - not only will your car run well, it will look great too!

- MOT
- SERVICE
- TYRES
- AIR CON



the Good Garage Scheme

Call today on **01235 850347**



Wallingford Christian Assembly
brings you:
A message of Hope from the Bible

Faith cometh by hearing and hearing by the Word of God (Romans 10:17, the Bible)

Join us online
Every Sunday @ 17:00
20 min message



We invite you to hear a short message from the Bible, available from the comfort of your own home.

To watch live:
Zoom ID=491 229 776
Passcode=316

Not able to join on a Sunday catch up on demand

YouTube @ Wallingford Christian Assembly

Facebook @GodsGoodNews (God's Good News for South Oxfordshire)

Wallingford Christian Assembly
www.wallingfordchristianassembly.org.uk



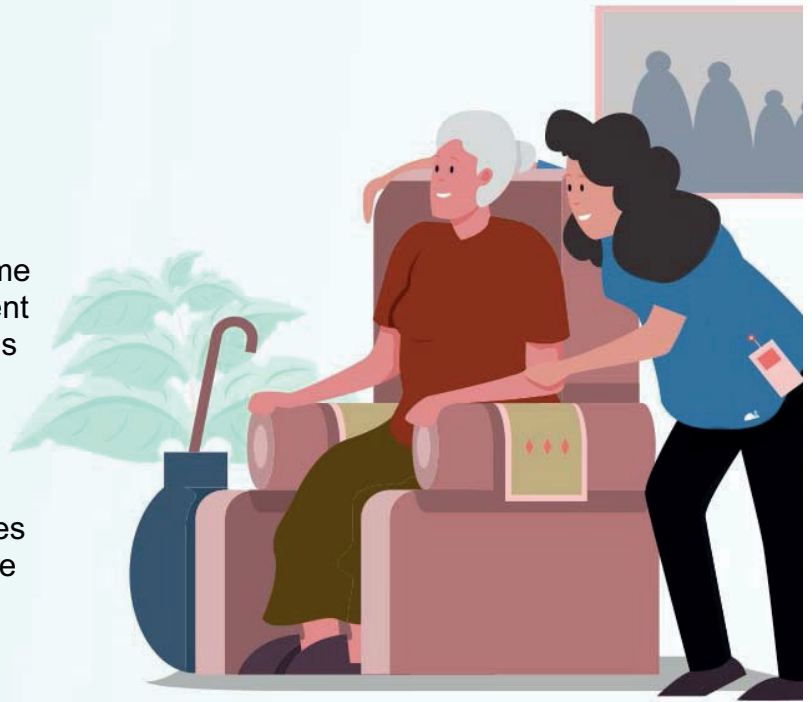
Q1Care

Do you, or a loved one, require support at home?

Q1Care prides itself in offering 'high quality' home care to enable people to stay safe and independent at home. We offer as much, or as little, support as required. From *companionship, practical help*, through to *complex needs*.

Work with us?

Become a valued employee, join a team that cares and make a difference to your community. Please email: heloise.slater@q1care.co.uk for more information.

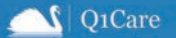


Home Care across West Berkshire & South Oxfordshire

Email us: info@q1care.co.uk / heloise.slater@q1care.co.uk

Call us: 0118 932 3865

Visit us: www.q1care.co.uk



Crosby Engineering

Latest Diagnostic Software
All Makes & Models Serviced & Repaired
Laser 4 Wheel Alignment
MOT
Air Conditioning servicing
Free Local collection
Audi BMW Mercedes VW Specialist
Family Run Business In Wallingford Since 1980

01491 834544

Unit F The Croft
Whiteley Road
Hithercroft Ind Est
Wallingford
Ox109rg

No Problem No Call Out Charge

Gutters Cleared

We remove leaves - moss - grass - growth & debris

12,500+
★★★★★
REVIEWS

Photos
Before & After
We do a camera survey first

Go High
4 Storeys, Commercial, Schools, Hotels & Industrial

Damp & Mould
Can be caused by blocked gutters

Weight & Damage
Up to 50kg of debris straining your gutters

Get an instant price
01491 815 450

or online gutterpro.co.uk

Vacuum cleaners - repairs bags & accessories
Power washers Steam cleaners Carpet cleaners
Scrubber driers Window cleaning poles Sanders

CLEAN MACHINE

1 & 2 St. Peters Place, Wallingford OX10 0BG
01491 825600 Hire & Sales
www.machineshatclean.com
e-mail: info@machineshatclean.com

@cleanmachineltd Find us on Facebook /CleanMachineLtd

THE WALLINGFORD BOOKSHOP
10C ST. MARTIN'S STREET
WALLINGFORD, OXFORDSHIRE OX10 0AL
Telephone / Fax: 01491 834383
Email: books@wallingfordbookshop.com

We offer friendly informed assistance and an excellent range of books, audios and fine art stationery.

Many titles not stocked can be obtained within 24 hours.

PILATES on the green

It's never too late (or too early!) to think about becoming stronger, more supple and moving with greater ease and self-awareness. Whether you've done Pilates before or are a complete beginner, we can help you achieve your goals in a fun, supportive and encouraging environment.

We're a friendly, well-established & spacious studio in Wallingford and we welcome clients of all ages and abilities.

- Ballet Barre Pilates Classes
- Group Matwork Classes (live and online)
- Tailor-made Equipment/Reformer classes
- 1-2-1 Appointments

Hilary: 07759219130 / 01491 826286
 hilary@pilatesonthegreen.co.uk
 www.pilatesonthegreen.co.uk



Shaun Guard

TV & WIFI SERVICES

- **Aerials** - supplied, repaired & poor reception solved
- **Satellite** - Sky Q dish upgrades, discreet dish installation also foreign TV
- **Internet** - blackspots cured, data cables to your TVs / computer
- **TVs** - hung on your wall or set up & tuned

 OXFORD AERIALS

Call Wallingford
01491 833282
 www.oxfordaerials.co.uk

Have you a Lasting Power of Attorney?

It's not just for those getting older, anyone can have a stroke, accident, dementia... and lose mental capacity



HELP-PEN-HAND

Who will speak for you?

Learn about LPAs for just £35.
 Contact me and I will help you. Val Wolsey
 01491 836820 | HelpPenHand@gmail.com



A PLACE TO

MAKE NEW FRIENDS

Unlock your child's potential

Stagecoach Wallingford
 Singing, dancing and acting classes for 4 - 18 year-olds

- 🌐 stagecoach.co.uk/wallingford
- ☎ 01235 390 810
- 📍 Wallingford School, OX10 8HH

 Childcare Choices
 WE NOW OFFER TAX-FREE CHILDCARE!

 STAGE COACH

TRAFALGAR ENTERTAINMENT COMPANY
 Stagecoach Performing Arts is the trading name of Stagecoach Theatre Arts Limited. Stagecoach Theatre Arts schools are operated under franchise and are independently owned by their Principals. Stagecoach and Creative Courage For Life are registered trademarks of Stagecoach Theatre Arts Limited.

Creative Courage For Life®



St Mary's & St Leonard's Wallingford
open to God, open to all

8am St Leonard – Holy Communion
10am St Mary-le-More – Parish Communion (live-streamed) with Children's Church or Family Service
6.30pm St Leonard – Evensong

www.marylemore.co.uk
 Email: rector@marylemore.co.uk Tel: 07869 167174

YouTube 

Dr. A. Ratti BDS (Hons) Kings College London

ST MARY'S DENTAL PRACTICE

New patients welcome
 Affordable quality private dental service from a caring team
 New maintenance plan available from Jan 2018
 Call for more information
01491 825 252
www.stmarysdental.co.uk

THE SINODUN PLAYERS
PRESENT AT THE CORN EXCHANGE
THEATRE WALLINGFORD

Jack and the Beanstalk

Written by Alan P Frayn
Directed by Erica Harley

**FRIDAY 13th TO
SATURDAY 28th
JANUARY 2023**
TUESDAYS - SATURDAY EVENINGS
& SATURDAY MATINEES

Tickets online at
cornexchange.org.uk
or in person at the
box office.

WALLINGFORD TEA & COFFEE

We roast High Grown Coffees and we stock Quality Teas together with a range of Herbal beverages and Spices plus a wide variety of Tea and Coffee accessories

Wallingford Tea & Coffee Company Limited
6a St. Martin's Street
Wallingford, Oxon. OX10 0AL
Telephone: 01491 836263
kitchtea@gmail.com

Londis

38 Sinodun Road, Wallingford Tel: 01491 837932

- Fruit & Vegetables
- Beers & Wines
- Newspapers
- Mobile Top-up Vouchers
- Magazines

Plus the National Lottery

best value locally

Opening hours:
Mon-Sat 6.00am-8.00pm
Sunday 6.30am-1.00pm

WOW

WINDOW ON WALLINGFORD

Advertise with us

Easily reach the local customer-base for your local business every month...

Wallingford Local Producers Market

Fresh, local food and handmade crafts

Every Saturday from 10am - 12:30pm

Local

St Mary's Church
Wallingford Market Place

December 3rd, 10th and 17th
January 7th, 14th, 21st and 28th

wlpn.org.uk [@wallingfordlocalproducersmarket](https://www.facebook.com/wallingfordlocalproducersmarket)

Red Lion

Brightwell cum Sotwell
Corinne & Mouse Welcome you.
Pop in and Say Hello

The Street, Brightwell-cum-Sotwell, Oxfordshire OX10 0RT
01491 837 373
www.redlionbrightwell.co.uk
FB: RedLionBrightwellcumSotwell

Don't forget: Tell them you saw their advert here!

Our fabulous advertisers make your magazine possible – please use them

GRAPE MINDS

Hand-selected wines, spirits and beers



- Free delivery for 6 or more bottles
- Party services (sale or return, free glass hire & more)
- Friendly advice
- Tasting evenings
- Wine open to try

Oxfordshire Business Awards



Retailer of the Year 2022

10 St Martin's Street, OX10 0AL

01491 824549

www.grapemindsdrinkalike.co.uk

Manor Café at Howbery

Open: 9am-4pm, Mon-Fri

MANOR CAFÉ
at
Howbery



- ✓ Hot and cold drinks, homemade cakes: all day
- ✓ Breakfast: 9.00am - 10.30am
- ✓ Paninis, baguettes and baps: 11.00am - 2.00pm
- ✓ Hot and cold lunch options: 11.30am - 1.30pm

Order online or at service counter | Outside and indoor seating areas
Takeaway service | Beautiful grounds | Ample parking

www.howberypark.com



Shellfish Com
Restaurant & Bar

28 High Street
Wallingford

www.shellfishcom.co.uk

01491 832 807

wallingford@shellfishcom.co.uk

THE COOKHOUSE — DELI — WALLINGFORD

We supply traditional delicatessen styled goods, varying from speciality store cupboard ingredients all the way through to indulgent treats in local cheeses, locally brewed ales and perfect accompaniments to help create the perfect family kitchen.

14 Market Place, Wallingford OX10 0AD



THE GEORGE HOTEL

Wallingford



High Street • Wallingford • Oxfordshire • OX10 0BS

Tel: 01491 836665



e-mail: info@george-hotel-wallingford.com

www.george-hotel-wallingford.com



EST. 1995

Mr & Mrs Park's FAMILY BUTCHERS

High welfare local produce
Knowledgeable and friendly service
A great range of local cheese, wines and much much more.

Check out our website or follow us on Facebook or Instagram to learn more.

5 The Pound, Cholsey, Wallingford, Oxfordshire, OX10 9NS
01491 651300 • info@mrandmrsparks.co.uk • www.mrandmrsparks.co.uk

Wallingford Wine of the Month – Krems Gruner Veltliner

Happy New Year! The madness of the wine trade in the festive season is passing from memory, and the lingering indulgence hangover is finally fading. It's time to look into the winter sun and work out what 2023 is going to be for us, and I am happy to suggest that exploring new and lovely things is a worthwhile ambition for the year ahead.

This month's wine is an unusual choice for something 'new', in that the winery was established in 1452, and has been in pretty much constant use ever since. What really makes it remarkable is that the 35 hectares of vineyard belong to the Austrian town of Krems, and can be found just outside the city walls. A publicly owned vineyard in a pretty seriously capitalist country might sound unappealing, and in recent times there was little to compel the market to drag these wines from Krems. But in 2003, a young winemaker called Fritz Miesbauer came from Domäne Wachau to take the reins, and has used these fantastic old vines to considerably greater effect. The result is a wine of real character, and one of the hidden gems of the Grape Minds range. For £12.49 (usually), this a really refined example of the style, well worth an exploratory taste.

In the glass, this Gruner Veltliner is zesty and fresh, with a subtle peppery quality which lifts the palate beautifully. While crisp, it has a distinct body and a deliciously smooth texture in the mouth, and the roundness and intensity of fruit. Gruner Veltliner is the definitive grape of Austria, and when it's made well it shows the kind of body and flavour profile that will appeal to any lover of Albarino or Picpoul. It's also a restrained 12% ABV, which is increasingly rare as temperatures rise.

Whatever else the year has to offer, this wine is going to improve and embellish. Wishing you a very Happy New Year from us all at Grape Minds!...

Michael Jelley is the Director of Grape Minds Wallingford

WOW
SPECIAL
OFFER



Producer: Fritz Miesbauer • Grapes: Gruner Veltliner • Region: Niederösterreich, Austria

SPECIAL OFFER! Exclusive Price: £11.49/bottle until the next issue. Just mention Window on Wallingford in store!



yes you can
with
Slimming
World

JOIN US

EVERY WEDNESDAY

MORNINGS: 09:30am & 11am

EVENINGS: 4pm, 5:30pm & 7pm

WALLINGFORD

Centre 70, Kinecroft

OX10 0DT

CALL
NICOLA

07861 672320

slimmingworld.co.uk

#YesYouCanWithSlimmingWorld



Slimming[®]
WORLD

touching hearts, changing lives

Come and join us.

30 January - 3 February 9:30am - 3:00pm

Open Week

DISCOVER ALL THAT A CRANFORD EDUCATION CAN OFFER YOUR CHILD

Guided Tours
BOOK YOUR ATTENDANCE
Available

CRANFORD HOUSE

Excellence in Independent Education for Boys and Girls aged 3-18
www.cranfordhouse.net

HAVE TROUBLE WITH YOUR TREES?

NEED SOME HELP? ASK THE EXPERTS

- Tree removal
- Tree thinning
- Stump grinding
- Hedge trimming
- Tree pruning
- Tree felling
- Landscaping
- Fencing

We are city & guilds nptc qualified and insured you can feel safe dealing with us.

Call now to see how we can help Free no obligation quote

1st CLASS TREE SURGEONS

E. quote@firstclasstreesurgeons.co.uk

T. 07889 881 525
firstclasstreesurgeons.co.uk

Thinking of selling your Jewellery, Watch or Silver?

Mallams 1788

Mallams' specialist Louise Dennis FGA DGA, is available to give **free** confidential valuations on any piece(s) you are considering selling at auction.

Home Visits also available

Enquiries: 01865 241 358 or louise.dennis@mallams.co.uk
www.mallams.co.uk

WEPS

WALLINGFORD ELECTRICAL & PLUMBING SUPPLIES

OPEN TO THE TRADE & PUBLIC

☎ **01491 827825**

✉ SALES@WEPS.ORG.UK

UNIT 1 MOSES WINTER WAY

KJ MOBILE HAIR

Katie Dnew
Cutting Technician

Phone/Text 07730400595
Email: kjmobilehair86@googlemail.com

HAYNES

Car Care Centre

servicing...batteries...tyres...fantastic value

Bushells Business Park, Lester Way,
Wallingford Oxon OX10 9DD

www.haynes-car-care.co.uk

- All Makes Servicing and MOT's
- Parts & Accessories
- Air Con Re-Gas
- Courtesy Car
- Batteries & Tyres
- 4 Wheel Laser Tracking

Proud Sponsors of Wallingford Vehicle Rally & BunkFest

01491 836 097