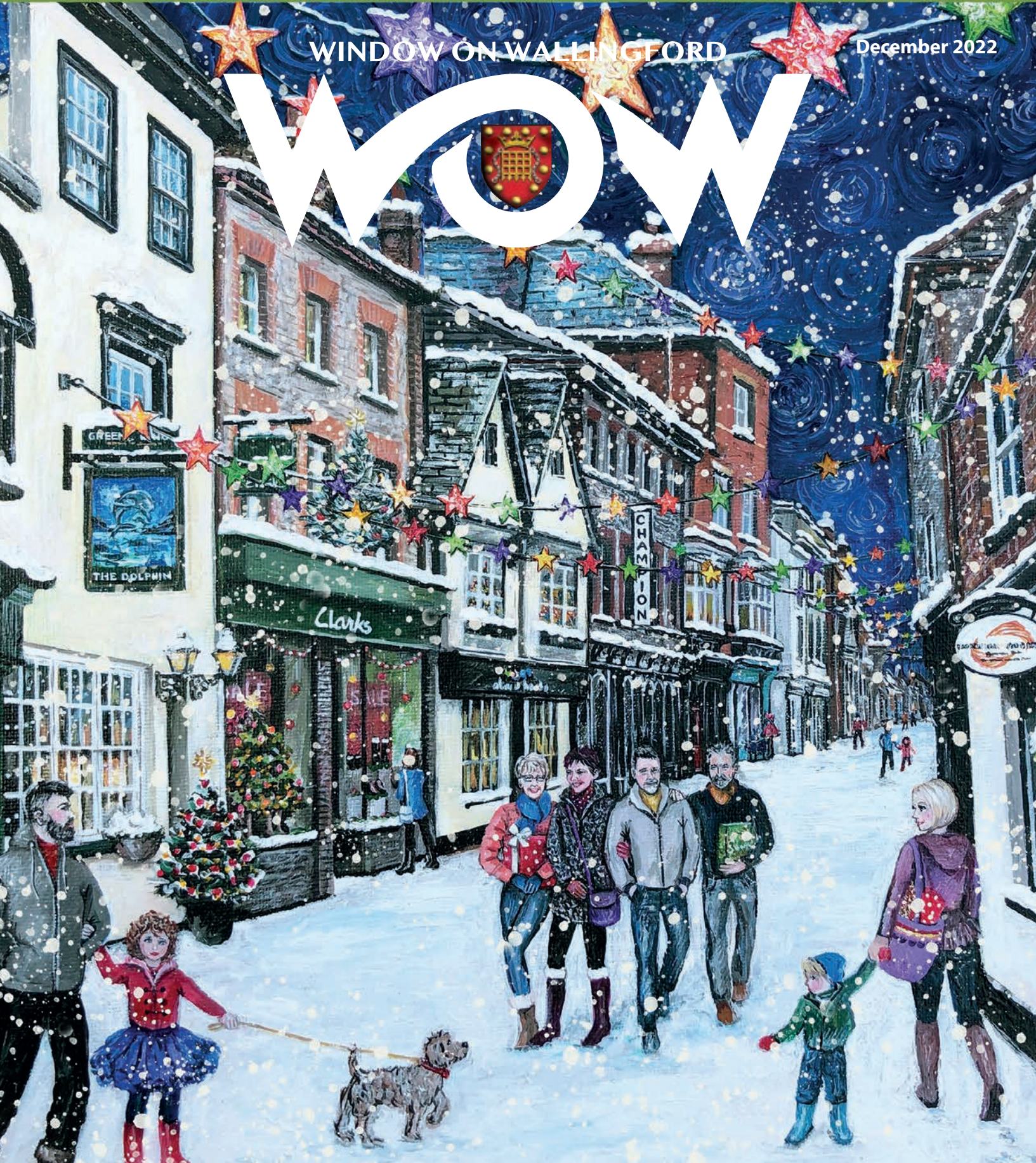


WOW



**No Problem
No Call Out Charge**

Gutters Cleared

We remove leaves - moss - grass - growth & debris

Photos

Before & After

We do a camera survey first



Conservatories & up to 4 Storeys

Tall buildings, schools, nursing homes and industrial units.

£5million insurance & a Receipt

Peace of mind that we're a proper business.

Timed Appointment

You can track our arrival online

Get an instant price

01491 815 450

or book online gutterpro.co.uk

★★★★★
15,000+ Reviews
4.95 Excellent
REVIEWS



C. A. HOLTOM Building Contractor

Established 1988

FOR ALL TYPES OF

Building – Extensions – Plastering – Refurbishment
Alterations – Brickwork – Patios – Drainage

Tel: 01491 651141 / 07990912966

Email: choltom1@sky.com



Illumin-Nation Ltd
5 St Peters Place, St Peters Street
Wallingford, Oxon OX10 0BG

allan.priddle@btconnect.com
www.illumin-nationltd.co.uk 01491 833505



Fireplace Magic
Stoves & Fireplace Sales

- Solid fuel, gas or electric fires
- Installation
- Chimney sweeping
- Woodburner servicing
- Chimney lining
- HETAS registered

Visit our showroom at
45 Prospect Street
Caversham RG4 8JB
Tel: 0118 9463060

www.fireplacemagic.co.uk



Masterfloors
Contract and Domestic Flooring Specialists

20 St. Martin's Street
Wallingford
Oxon. OX10 0AL
Tel: 01491 833701
Free estimates

www.masterfloorswallingford.co.uk



HOMEBASE
PROPERTY

★ **WHATEVER YOUR PROPERTY NEEDS** ★

SALES
LETTINGS & MANAGEMENT

01491 824470 | info@hb-pm.co.uk
16B St Mary's St, Wallingford, OX10 0EW



Bathroom Showroom

Call Now
01491 377 272
35 Wallingford Rd, Goring
Wallingfordtilesandbathrooms.co.uk

Wallingford
— TILES & BATHROOMS



Aspa
SCANDINAVIAN INTERIORS

Interior design service | Fabrics | Wallpaper
10 St Mary's St Wallingford
www.aspainteriors.co.uk aspa_interiors



WINDOW ON WALLINGFORD

To advertise in Window on Wallingford please contact us on: info@windowonwallingford.co.uk

Adverts:

Must be sent in JPEG or PDF formats in their highest quality.

Advert sizes:

- 95 mm x 53 mm
- 95 mm x 110 mm
- 192 mm x 50 mm
- 210 mm x 297 mm
- 210 mm x 148 mm

Articles:

Supplied in MS word. Please provide any photos or images including logos separately (jpeg files) that you would like in your article.

Deadline date to submit: 7th December

Editor: Naomi Reddyhoff

info@windowonwallingford.co.uk

Marketing, Accounts & Administration: Jessica Dovey

jess@windowonwallingford.co.uk

Distribution: Naomi Reddyhoff

info@windowonwallingford.co.uk

Advertising Sales: Lesley Longden

lesley@windowonwallingford.co.uk

Cover: Mandy Reekie

@windowonwallingford

@window_on_wallingford

Whilst every effort is made to ensure the accuracy of information printed in the magazine, the Editor and Publisher do not accept any responsibility for the consequences of any errors that may occur. Material published in the Window on Wallingford Magazine is copyright, but normally the Editor will be pleased to grant permission for it to be reproduced, if asked on each occasion. The opinions published in this magazine are not necessarily those of the Editor, Publisher or WoW.

Adverts will continue to run unless cancelled.

Hello Everyone

December has arrived and Christmas is just around the corner. It's all very exciting.

We are so lucky here in Wallingford to have lots of lovely things happening to celebrate the festive season and make life a little better for some people.

If you are going to be alone for Christmas Day and would like some company, you can book in for dinner at the Ridgeway Community Church, see page 5 for more details. Or enjoy the whole magical festive season at Benson House Care Home, see page 6.

Fancy some fabulous Vintage Costumes – the corn Exchange are having their Glitz & Glam sale of Ex Theatre Wardrobe Costumes on 4th December see page 15.

Looking for Christmas present ideas? Pop along to PC Technicians lots of things to suit your budget, or some wine, bubbles, port or more - see the experts at Grape Minds. Check out the delicious WoW Readers offer from them on page 21, thank you. "Joyous" original art from 21 artists, at Petits, 2 – 4 December. Wallingford Book shop have some great reads. Gorgeous card depicting places in Wallingford, by Mandy Reekie, see out beautiful front cover picture "Festive Flurry".

Going out or staying in? Book your Christmas Party at the George Hotel, gorgeous meats from Mr & Mrs Parks, with expert cooking tips too. Wallingford Local Producers Markets, Saturday mornings at St Marys. Pop into any of our fabulous cafes, restaurants or pubs, find them in the Dining Out section at the back of the magazine.

Christmas Tree Light Switch On the 2nd of December, Christmas Market in the Town Centre on Sunday 4th December, and the Christmas Carols and Gift Fair on Wednesday 14th!

Soo much going on, with great opportunities to buy local!!

Have a fabulous, fun, festive Christmas, stay safe, look out for each other.

Naomi xxx



TREASURE HUNT
Sunday 4th December

Collect your sheet from Runwize Sports.

Find Santa in Wallingford shop windows.

Complete the sheet and return to Runwize Sports and collect your prize.

Sunshine Painting & Decorating

LANCE THOMPSON
 FRIENDLY RELIABLE SERVICE

*For All Your Decorating Needs
 Call For A Free Estimate.*

07780 221950

lance.sunshine@btopenworld.com www.sunshinedecorating.co.uk

@sunshinedecorator @sunshine_pd

FULLY INSURED | CHOLSEY, OXON

AASVOGEL
The yellow waste management solution

Skip Hire Caged Tipper Waste Management

01235 760555

info@aasvogel.co.uk www.aasvogel.co.uk

[Mention Window on Wallingford when you call]

GA

Electrical
Plumbing
Fire and Security

Call: 01491 835875

Email - reception@groupga.co.uk
Unit H Moses Winter Way, Wallingford, OX10 9FE

**THE POSITIVE
OUTCOMES GROUP**

NICEIC
DOMESTIC
INSTALLER

gas safe
REGISTERED

Wallingford Methodist Church

St Leonard's Square, OX10 8AS

Sunday Worship 10.30 am EVERYONE WELCOME

The resumption of other activities is planned
Please check the notice boards outside the church for details
or the website www.wallingfordmethodistchurch.org.uk
Contact our minister, Rev. Jocelyn Bennett, with any enquiries.

Tel 01235 813242 email jocelynbennett@methodist.org.uk

W **WATER'S EDGE**
PLUMBING & HEATING

Plumbing and Heating Services

Based in Crowmarsh, fully qualified and insured.
Contact our friendly office team for a quick response
to your requirements or to arrange your **FREE QUOTE**

01491 821 626

www.watersedgeuk.co.uk | contactus@watersedgeuk.co.uk

- General Plumbing
- Leak Repair
- Central Heating
- Boiler Repairs
- Boiler Installations
- Shower Installations
- Powerflushing
- Gas Safety Services
- Underfloor Heating
- Estate Agent Services

Proud members of

OFTEC **Checkatrade.com** **gas safe**
Where reputation matters REGISTERED

CARE DRY CLEANERS

10B St. Martins Street, Wallingford OX10 0AL
Tel: 01491 837318

- Suede Leather • Alterations • Press Services • Wedding Dresses •
- Settee Covers • Rugs • Laundry • Duvets • Curtains

JOYOUS



21 ARTISTS WALLINGFORD 2-4 DECEMBER 2022 10am to 4pm

**FIND A PERFECT
ORIGINAL GIFT**

FREE ENTRY

"Pettits"
21 St Martin's Street,
Wallingford OX10 0AL

Wallingford & District
Art Club

Quakers

Are you interested in exploring a different spiritual path?
As Quakers we help each other as we live our lives,
guided by experience rather than doctrine.

Come and find out
Sundays 10.30 am
Quaker Meeting House, 13 Castle Street, Wallingford
Website: midthamesquakers.org.uk

**Don't forget:
Tell them you saw
their advert here!**

WOW
WINDOW ON WALLINGFORD

Our fabulous advertisers make your
magazine possible – please use them



Don't be lonely this Christmas

Ridgeway Community Church and the Fountain Community Hub

At Ridgeway Community Church and The Fountain Community Hub we care deeply about our local community and especially those people who are suffering in any way.

We recognise that Christmas Day can be a very difficult day for many people, especially those who are feeling lonely or isolated. This year we are offering a free Christmas dinner and good company to members of our community who would otherwise be alone on Christmas Day.

It is our intention to give the warmest of welcomes to anyone, regardless of age or background. We are really looking forward to making connections with people as we share our family Christmas with them.

We have limited spaces so pre-booking is essential. Please text or call Laurence to book on 07912 101 585.

The Fountain Community Hub 12-3pm Christmas Day.

Advent & Christmas in St Mary's. Follow the Star !



**St Mary's & St Leonard's
Wallingford**
open to God, open to all

There is plenty happening in St Mary's Church, Wallingford during December. Do come into the church during the **Christmas Shopping Town Event 4th December (13:00-15:00)** for refreshments and children's activities. Add a star to the framework outside the church. Hang a star from the Tree of Remembering inside the church for a loved one who has died. **Join in the Follow the Star Advent Trail around Wallingford.** Take part in our Reverse Advent Calendar (each day as you open your advent calendar, add an item to a box; shortly after Christmas, please bring the brimming boxes into St Mary's and we will donate your gifts to the Wallingford Food Bank).

You are also invited to any of our services: the **Family Service on 11th December** where you can make a Christingle; a reflective carol service, called the **Longest Night on 21st December**; the Crib Service on Christmas Eve; and not forgetting **Midnight Communion and Christmas Day services.** Open to all.

So please **JOIN US THIS CHRISTMAS. All are welcome.** For more info. on our services & activities during Advent & Christmas, pick up a leaflet inside St Mary's or contact stmarylemore@outlook.com or keep an eye on Facebook!



The Town Information Centre

The Town Information Centre wish to inform everyone that the Centre will go on their winter hours from 1st December until 1st March.

We shall be open from 0930 until 1330 and look forward to you calling in to see our range of local gifts, cards, calendars and books. We have a new selection of giftware this year.

Do remember that we keep bus timetables and also have lots of suggestions for local walks and maps as well as some free leaflets of local interest.

However you celebrate this time of year we hope it will be a happy time. It certainly has been an eventful year this year.

Tina, Sue and Anita

WINDOW ON WALLINGFORD



WALLINGFORD

A historic market town on the banks of the River Thames

Fabulous festive fun



SCAN HERE
to find out more

Book a festive break at Benson House Care Home

Enjoy a magical festive season, with celebrations, daily activities, healthy food along with all the support and care you need. Welcome in the New Year with new friends in our warm and homely community.



Freephone
0808 223 5401

Churchfield Lane, Benson, Wallingford, Oxfordshire OX10 6SH

Online
caringhomes.org

Benson House

CARING HOMES

Welcome to Wallingford Town Council's new regular update in Window on Wallingford, a big thank you to the editors for having us.



Wallingford
Town Council

Having passed the milestones of Halloween, Guy Fawkes Night and Remembrance Sunday, all big events for different reasons, we are heading surely into the Christmas spirit.

Wallingford has really risen to the challenge of Christmas this year with lots of different events and markets happening. **The Polar Express is once again coming to town from 24 Nov until 23 Dec** and new for this year is a live Advent calendar walk, kindly co-ordinated by the Waterside Court Care Home. **There was a Christmas Extravaganza at the Sports Park on 18th Nov** and a **Winter Wonderland Christmas market at Waterside Court on 19th Nov**. **Ayres House Studios will be launching their Winter exhibition on 1st Dec**, showcasing artworks by professional studio and local artists and sharing bespoke gift ideas and decorations. And not to forget **Style Acre's Santa Dash and 1155's wonderful Santa Sleigh!**

With help from partners in the community, we've been able to organise the Christmas market in the Town Centre on Sunday 4th December, which is set to be a great day out. Don't miss our Christmas Tree Light Switch On the 2nd December and the Christmas Carols and Gift Fair on Wednesday 14th!

For further details and more Christmas events, please head to the Town Council website, or even better, sign up to our newsletter online to keep up to date with the latest news.

Thanks for reading this and I look forward to seeing some of you around town as we head into this festive season.

Best wishes

Cllr Marcus Harris

Mayor of Wallingford

WHAT'S ON!

HENLEY AND DISTRICT STAMP CLUB

Sorry to tell you that Christmas will quickly be here and as the days get shorter and the nights longer, have you thought of starting a hobby? As a younger person most had a childhood collection of Stamps, why not take this on as an adult and visit us at Bix one Wednesday evening. You can then join others that enjoy the hobby, meet with like-minded people. CROSS KEYS - Wallingford

Meetings in November

Wednesday 9th November – The Franking System of Great Britain' by Guest speaker Bob Garland.

Wednesday 23rd November - A display of 'Aspect of Gibraltar' by guest speaker Eric Holmes.

Meetings are held the 2nd and 4th Wednesday of the month at Bix Village Hall at 7.30 p.m.

Visitors and new members are welcome. Further details can be obtained by phoning Brian on **01491 681739** or on our website: - www.henleyphilatelic.org.uk

WALLINGFORD & DISTRICT ART CLUB

Make a note in your diary for **Tuesday 13th at 7.30pm to sit back and enjoy a fabulous demonstration 'A Still Life in Oils' by professional artist Mike Skidmore**. Mike's style varies from traditional old master shadows and lights through to more contemporary lighter toned paintings often with a touch of humour in their composition. This online demo is being hosted by Wallingford & District Art Club and will be available via Zoom to enjoy either from your own device or, in the company of fellow art lovers, screened at Centre 70. In addition, our annual Christmas exhibition was in planning stages as this was written so please check our website for further details and come enjoy the paintings, you may find one you would like to take home with you. You can register for the demo by emailing admin@wallingfordartclub.org.uk and will be sent the Zoom. If you would like to discover all the benefits of becoming a club member can bring you, please check out our website at www.wallingfordartclub.org.uk

WALLINGFORD METHODIST CHURCH

Everything will be provided, including a festive drink and snack, on the afternoon of **Saturday 3rd** at Wallingford Methodist Church. To book a place please contact wmleadership@outlook.com or ring **07818 660861**.

WALLINGFORD PHOTOGRAPHIC CLUB

During Autumn, Wallingford Photographic Club is enjoying a mix of online and in-person meetings (the latter at Crowmarsh Pavilion). Our inclusive club allows people of all ages and levels of experience to learn how to improve their photography through conversations with other members, presentations by visiting speakers, practical evenings and competitions. **The club meets every Thursday at 7.30pm for an 8pm start** (7.45 start on competition evenings and online sessions). **In December we have David Gibbins joining online (Zoom only) on the 1st** to talk about his photographic journey all the way from slides to online technology, featuring creative and travel shots. Then we'll have a **members' participation evening (8th)** in which we select a shortlist of 'intimate landscape' images to enter into a regional competition with other photography clubs. Followed by a Christmas social the following week.

WALLINGFORD LOCAL PRODUCERS MARKET

Wallingford Local Producers Market offers a truly warm welcome from a market with heart, as all of the food and crafts are made locally and the market has a real community feel. It not only supports local small businesses but is assisted by a great team of local volunteers. A special mention for the young people in our town, particularly the wonderful Scouts who help us set up, tidy up and run our veg stall once a month. They use the lovely new veg boxes made by Wallingford School students assisted by Miss Walker.

If you haven't found it yet come and visit on a Saturday morning between 10am and 12:30pm in St Mary's Church at the heart of our lovely town. Wallingford Local Producers Market is a great way to shop local, support micro businesses, find unique products and indulge your sweet or savoury food cravings. www.wlpm.org.uk

Winterbrook Garden Services Ltd

Garden Design, Construction & Maintenance

Fencing
Patos

Full Pruning Service

Tel: 01491 838189

Mobile: 0775 36 36 333

winterbrookgs@gmail.com



Winterbrook Garden Nurseries

High Road, Brightwell-cum-Sotwell,
OX10 0PS

Independent plant nursery
specialising in herbaceous
perennials
& garden curios

www.winterbrookgardennurseries.com

@winterbrookgardennurseries

G.R. Galliford

Graham
07762 650 809
01491 824583



Mini Digger
with Operator
Block Paving
Driveways
Patos
Drop Kerbs
Groundwork

g.galliford@btinternet.com

Benson Angling Centre

Your Friendly Local Angling Centre

Unit 3, Benson Waterfront,
Benson Wallingford OX10 6SJ

Tel: 01491 838288

Email: dibby1949@yahoo.co.uk



Stockists of Drennan E.S.P. Dynamite Baits, Sticky Baits, Baitech, Dead Baits and Live Baits Available. We buy and sell all used angling items

SHOE
REPAIRS

ENGRAVING

KEY
CUTTING



FEET FIRST



21 St. Mary's Street, Wallingford
Contact Gary on: 01491 825224

WATCHSTRAPS
BATTERIES

STITCHING
REPAIRS

TRAVEL GOODS
LUGGAGE

A.G.CURTAIN DESIGN LTD

www.agcurtaindesign.com



Made Exclusively For Your Home
Bespoke Curtains & Soft Furnishings

- 15 years serving clients in South Oxfordshire
- 1,000's of design lead fabrics to choose from
- Expert making and fitting service
- Curtains & Soft Furnishings
- Poles - tracks - finials & tie backs
- Cushions - lamp shades & headboards
- Made to order promptly & efficiently
- Free measure & quotation service

BEAUTIFUL
CURTAINS, BLINDS
&
SOFT FURNISHINGS
01491 834238



Blinds & Shutters
Modern & Contemporary

- Wooden & Venetian
- Roller & Vertical
- Perfect fit & Faux Wood
- Made to fit your windows
- Inside & Outside recess fit
- Manual & Remote controls
- For all rooms in your home or business

VISIT OUR RETAIL STORE AT 3 ST, PETERS PLACE, WALLINGFORD, OXON. OX10 0BG



Wallingford Tyres & Exhausts



**FRIENDLY, PROFESSIONAL SERVICE
AT COMPETITIVE RATES**

PHONE: (01491) 824145 FOR A QUOTE

or call in at: AYRES YARD, STATION ROAD,
WALLINGFORD, OXON.

OR BY APPOINTMENT OUTSIDE WORKING HOURS

Mon.-Fri. 8.30 a.m.-5.30 p.m. Sat 8.30 a.m.-1.00 p.m.

(Just past the Esso Garage on the way to Didcot)



Funerals / Weddings / call or click and collect / national orders

1 Ayres Yard, Station Road, Wallingford, Oxon OX10 0JZ
T: 01491 838005 E: wallingfordflowers@gmail.com

HOWARD CHADWICK FUNERAL SERVICE

A caring family owned and managed Funeral Service

- Dedicated Private Chapel of Rest •
- Golden Charter Pre-Paid Funeral Plans •
- Specialists in Memorial Stones and Designs •

33 Benson Lane, Crowmarsh Gifford,
Wallingford OX10 8ED

Tel: 01491 825222

www.chadwicksfuneralservice.co.uk



Golden Charter
Funeral Plans



A superior one bedroom retirement apartment situated in the prestigious McCarthy & Stone Williams Place development in Didcot. This charming complex and delightful grounds boast an Estate Manager and 24-hour on site staffing, table service restaurant, homeowners lounge, domestic assistance (1hr included in service charge - additional hours by arrangement). The first floor apartment enjoys a large wet room style bathroom, an elegant sitting room with glass fronted balcony area, a fully fitted modern kitchen, and double bedroom with walk in wardrobe and picture window. Within close proximity to a supermarket, hairdressers, coffee shop, and pharmacy, this super opportunity is open to over 70's.

- * One bedroom retirement apartment available to over 70's situated in the prestigious McCarthy & Stone Williams Place development
- * Front door with spy hole, 24-hour Tunstall emergency response pull cord system, illuminated light switches, smoke detector, wall mounted thermostat and apartment security door entry system with intercom
- * Modern and fully equipped kitchen with an electronically operated UPVC double glazed window
- * Elegant sitting room with French door leading to the glass fronted balcony, providing a pleasant outdoor seating area
- * Generous principal bedroom with walk in wardrobe and large picture window providing a delightfully light and airy room
- * Large wet room style bathroom with open shower but with facility to re-instate shower cubicle if required
- * Stunning communal gardens, vehicle room for mobility scooters, homeowners lounge, quiet room, and function room
- * Parking is by allocated space subject to availability. The fee is usually £250 per annum, but may vary, permits are available on a first come, first served basis
- * Leasehold Information - 999 years from the 1st June 2017

Louise Batten, Associate Director, William Jones Estate Agents, 01235 812229


McCarthy & Stone
 The UK's leading retirement housebuilder

Scout Christmas Postal Service 2022

This year we are able to offer deliveries to the following areas: **Wallingford, Winterbrook, Crowmarsh, Cholsey, Moulsoford, Benson, Preston Crowmarsh, Roke, Rokemarsh, Berrick Salome, Shillingford, Warborough and Ewelme.** Unfortunately this year we are not able to deliver to Brightwell. As good as our service is we can not extend beyond these areas.

If you are new to this service it is run by local scouts with a huge band of willing volunteers. It costs 35p per card, just put the money with your cards in the Scout post boxes found in local shops and businesses. These will be collected during Dec and all cards will be delivered by Christmas Eve.

Boxes will be in place from Dec 3rd and the last collection will be on Monday 19th Dec (approx 15.30). Please only put cards in the boxes for our delivery areas and ensure they have a complete address, including post codes.

Post boxes in Wallingford can be found in **KP Stationers, House of Cards, Feet First Shoe Repairs and Londis** (Sinodun Rd). Other post boxes can be found in surrounding villages that have a Scout Group taking part.

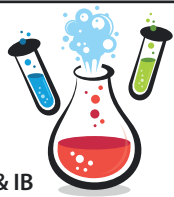
Please support this great community service and fund raiser for the local groups involved and make use of it for all your local cards.

WINDOW ON WALLINGFORD



CHEMISTRY TUITION - JASMINA HARRISON

Chemistry tutoring by a highly experienced former Head of Department at a local independent secondary school



Tuition at secondary level including GCSE, A level & IB
Offering personalised tuition at my home in Dorchester or can visit students in Dorchester, Benson, Wallingford and Goring areas.

In person and online.

Skilled in building confident students at all levels of Chemistry, enabling them to achieve their potential.

07753816716 • jasmina@rwhconsulting.uk

Tom Cottrell Landscapes

EST 1974 Family Run Business

Telephone: 01491 836974

All tree aspects - Dave Cottrell

- Felling • Reducing • Reshaping
- Thinning, Removal • Pollarding
- Shrub & Tree Pruning • Dead Wood
- Removal Hedge Management
- Stump Grinding

Garden & Landscaping Services

- Turfing • Hedge & Grass Cutting
- Planting • Fencing • Patios
- General Garden Maintenance
- Garden Renovation & Construction
- Woodchip Mulch
- Seasoned Logs & Kindling Wood

www.tomcottrelllandscapes.com

Email: tomcottrelllandscapes@gmail.com

Orchard Cottage, High Road, Brightwell-cum-Sotwell, Nr Wallingford, Oxon OX10 0PS

LOVE HAIR? LOVE FASHION? BE A HAIRDRESSER

Apprenticeships available now!



Call Forrester's: 01491 837 523

Drop in: 25 High Street, Wallingford

Forrester's4hair.com



Apprenticeships

Paintings . Prints . Ceramics . Sculpture . Textiles .
Jewellery . Home furnishings . Christmas decorations .
Gifts made by local artists and makers.

Private View: Thursday 1st Dec 6-9pm

Ayres House Studios

Winter Art Exhibition & Christmas shopping

1st-11th Dec / 10.30am-4.30pm

www.ayreshousestudios.co.uk

Paddocks Pre-School

Paddocks Pre-school
Paddock Road
Wallingford
OX10 9LT
www.paddockspreschool.com

A friendly preschool environment offering a wide range:

- Flexible sessions for 2 - 5 year olds
- Universal 15 hours funding for 2, 3 & 4 year olds
- Extended 30 hours funding for 3 & 4 year olds
- Large Garden & Forest School
- After school care available
- Holiday play schemes for 2-8 year olds



For more information or to arrange a visit, please call 01491 825333 Charity Number: 1001964
or email info@paddockspreschool.com



Advertise with us

Easily reach the local customer-base for your local business every month...

JIM PINK

Service Centre and Car Sales
15 Wood Street, Wallingford OX10 0AY



HYBRID/ELECTRIC SPECIALISTS

- Free Battery Check
- Free Light Check
- Free Antifreeze Check
- Annual Service
- Batteries from £49.95 + VAT Fitted Free
- MOT testing
- 4 Wheel Laser Tracking
- Air Con Servicing (Inc.RI 234YF type)
- Air Conditioning Regas from £69 inc VAT
- Diagnostics
- Tyres fitted at very competitive prices
- We now have a fully qualified technician to work on Hybrid/Electric Cars

FREE COLLECTION or we can provide a COURTESY CAR

Call 01491 836017 • 01491 836022 • 07342 630396
email info@jimpink.co.uk www.jimpink.co.uk

customer care without compromise

CHEQUERS GARAGE

Fullers Road, Aston Tirrold,
Oxfordshire OX11 9EN

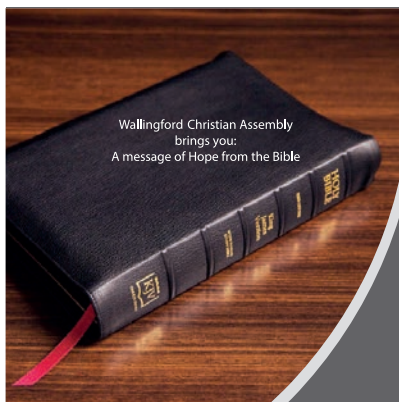
info@chequers-garagedidcot.co.uk
www.chequers-garagedidcot.co.uk

At Chequers Garage we look after our customers as well as their cars. That's why we have courtesy cars, offer local collection and delivery, explain your invoice in plain English and every car is washed before it is returned - not only will your car run well, it will look great too!

- MOT
- SERVICE
- TYRES
- AIR CON

the Good Garage Scheme

Call today on 01235 850347



Wallingford Christian Assembly
brings you:
A message of Hope from the Bible

Faith cometh by hearing and hearing by the Word of God (Romans 10:17, the Bible)

Join us online
Every Sunday @ 17:00
20 min message



We invite you to hear a short message from the Bible, available from the comfort of your own home.

To watch live:
Zoom ID: 491 229 776
Passcode: 316

Not able to join on a Sunday - catch up on demand:

@Wallingford Christian Assembly

@GodsGoodNews (God's Good News for South Oxfordshire)

Wallingford Christian Assembly
www.wallingfordchristianassembly.org.uk

Treecycle Thames Valley

Sign up to have your Christmas tree recycled and support Sue Ryder

Sue Ryder is encouraging local residents to keep spreading the festive cheer into the New Year by signing up to have their Christmas trees collected and recycled to raise vital funds for families needing their care.

After the festivities are over, Treecycle Thames Valley, supported by Rabbits Vehicle Hire, G A Butlers & Sons, Ashburton Ltd Landscaping and Arbourfield Tree Care, will be collecting real Christmas trees direct from people's front door or driveway so that they can be chipped into mulch and recycled.

For a donation, people who live in OX10, OX11, OX12, OX14, OX49, RG1, RG2, RG4 7, RG4 8, RG4 5, RG4 6, RG4 9, RG5, RG6, RG7, RG8 0, RG8 7, RG8 8, RG8 9, RG10, RG14, RG18, RG19, RG20, RG30 and RG31, RG40 postcodes can have their trees collected between Monday 9th and Thursday 12th January 2023.

All money raised will help Sue Ryder to continue offering its compassionate palliative care and bereavement support - helping its teams be there when it matters. To find out more about the environmentally-friendly fundraising collection drive, Treecycle Thames Valley, and book a collection by Wednesday 4th January 2023 visit sue Ryder.org/thamestrees

Contact the Sue Ryder Thames Valley fundraising team with any queries on 0118 9550 433 or email: thamesvalley.fundraising@sue Ryder.org



Hundreds light up the Thames Valley night with Starlight Hike



Hundreds of walkers donned their best fancy dress and glow-in-the-dark accessories on Saturday 22 October for a special hike under the stars to celebrate the memory of loved ones.

Sue Ryder Starlight Hike Thames Valley, sponsored by Azego, saw over 250 people of all ages take on a 5k walk in support of national healthcare charity Sue Ryder.

The spectacle started at Pangbourne College, where teams and individuals sporting bright-coloured clothing, flashing headwear and neon face paint enjoyed live music and a fun warm up before setting out on a 5k route around the beautiful college grounds.

During the event there was also an opportunity for participants to place a poignant dedication in honour of someone special to them.

Last year Sue Ryder provided over 830,000 hours of care to thousands of families across the country, including from its Sue Ryder Duchess of Kent Hospice in Reading and Sue Ryder Palliative Care Hub South Oxfordshire.

Sue Ryder Starlight Hike Thames Valley is expected to raise over £15,500 to help Sue Ryder provide even more expert and compassionate palliative care, and create a future where everyone has access to support at the end of their life or following a bereavement.

Thank you to our sponsor, Azego, all our supporters, and of course our dedicated team of volunteers and marshals, without whom we would simply not be able to put on this fantastic fund-raising event.

If you weren't able to take part in this year's Sue Ryder Starlight Hike Thames Valley there are still plenty of ways you can support Sue Ryder. For inspiration visit sue Ryder.org/fundraise or email the Sue Ryder Thames Valley fundraising team on thamesvalley.fundraising@sue Ryder.org.



Over 250 people took part in Sue Ryder Starlight Hike Thames Valley



WHAT'S ON

AT THE CORN EXCHANGE, WALLINGFORD



CINEMA

All regular performances normally start at 7:30pm unless stated otherwise. Please note that we will start on time and that latecomers will only be allowed in after the start of the film where there is no disruption to sitting patrons. This means that we may have to reseat some latecomers.

For Live Screenings we reserve the right to seat latecomers in the Curtis Room where there is a large screen relay.

The bar and auditorium will open from 7pm so there's plenty of time to collect drinks beforehand.

We are also showing films on Wednesday and Saturday afternoons at 2:30pm. Please look at the website for updates.

This is being done for an interim period but will continue if there is sufficient demand.

Tickets £10 for Adults and £5 for under 15s unless otherwise stated.

Thursday, 1st December, 7:30pm	A Bunch of Amateurs (12A)
Friday, 2nd December, 7:30pm	Watcher (15)
Sunday, 4th December, 7:30pm	Watcher (15)
Monday, 5th December, 7:30pm	Three Day Millionaire (15)
Tuesday, 6th December, 7:30pm	Three Day Millionaire (15)
Wednesday, 7th December, 7:30pm	Three Day Millionaire (15)
Friday, 9th December, 7:30pm	The Menu (15)
Saturday, 10th December, 7:30pm	The Menu (15)
Sunday, 11th December, 7:30pm	The Menu (15)
Monday, 12th December, 7:30p	Armageddon Time
Tuesday, 13th December, 7:30p	Armageddon Time
Wednesday, 14th December, 2:30pm	Charlotte
Wednesday, 14th December, 7:30p	Armageddon Time
Thursday, 15th December, 7:30pm	Charlotte
Friday, 16th December, 7:30pm	Roald Dahl's Matilda The Musical (PG)
Sunday, 18th December, 2:30pm	Roald Dahl's Matilda The Musical (PG)
Sunday, 18th December, 7:30pm	Roald Dahl's Matilda The Musical (PG)
Monday, 19th December, 7:30pm	Roald Dahl's Matilda The Musical (PG)
Tuesday, 20th December, 7:30pm	Roald Dahl's Matilda The Musical (PG)
Wednesday, 21st December, 2:30pm	Roald Dahl's Matilda The Musical (PG)
Wednesday, 21st December, 7:30pm	Roald Dahl's Matilda The Musical (PG)
Thursday, 22nd December, 7:30pm	Roald Dahl's Matilda The Musical (PG)

Under pressure to use energy pre-payment meter? Citizens Advice can help

citizens
advice

In the concluding months of 2022, Citizens Advice is expecting to see more cases of a disturbing trend: low-income families with energy supply debts being pressured or even coerced into using pre-payment meters for their gas and electricity.

Energy supplied by pre-payment meters costs more than energy paid by direct debit or on-demand, and this comes at a time when drastically increased price tariffs this autumn will probably see most people's fuel bills double.

Energy suppliers are legally obliged to negotiate repayment plans with customers who are falling behind on their bills, but many suppliers are ignoring this requirement and proceeding with installing pre-payment meters - or, for customers with smart meters, remotely switching them to prepayment.

If you are one of the many people who are confronting this problem, or are generally floundering amidst your finances, worried about the future, or want to discuss your problems in confidence, get in touch with **Citizens Advice on Adviceline 0808 278 7907**. You can also telephone the **Citizens Advice Consumer Helpline on 0808 223 1133** or the **Citizens Advice Debt Helpline on 0800 240 4420**. Our website has lots of helpful information: <https://www.citizensadvice.org.uk>

FAMILY PAGE

This is Girlguiding Wallingford!

What do we do....?

Within Girlguiding Wallingford there is something for everyone! Just this week alone there has been spooky Halloween trails run by the Rangers, a Lego workshop for Rainbows, a 'Children in Need' Spotathon Disco (everyone wore spots!) and local firework crafts and fund-raising sweet stall.

There are official duties too! Members of the Wallingford District were incredibly proud to be called upon to provide refreshments in The Castle Gardens, Wallingford, and in London to support public welfare on the day of the Queen's Funeral. Her late Majesty the Queen was a lifelong member of the guiding community and, as our Patron, was incredibly important within guiding.

Fundraising is an important element of girlguiding challenge badges and current fund-raising projects seek to raise money for 'Children in Need', and an access ramp for our Guiding HQ for our less able members. A new defibrillator has also just been purchased for a local Sports Club after sustained fund raising efforts within the District. During the Big Green Week in Wallingford in September we raised awareness of our environmental concerns and invited everyone to contribute to a pavement mural entitled 'Love our Planet'.

So YES..there is something for everyone!

Guiding encourages girls to be the best they can be and gives girls a voice within a shared community which endorses the important values of thinking of others and the friendships gained within guiding.

I am constantly in debt to those leaders who give up their time voluntarily because they are passionate to support these goals.

BUT..we are always on the lookout for special people to join us. If this is YOU and you are interested in volunteering, please contact girlguidingwallingford@gmail.com and come and join the FUN! To register your daughter please visit the girlguiding website girlguiding.org.uk

Rainbows (Ages 5-7) Brownies (7-10yrs) and Guides (10-14yrs) Rangers 14-18yrs



1st Wallingford Boys' Brigade and Girls' Association

The summer now seems a long time ago and the memories of the Gorge Walking, High Ropes, Canoeing and wide games that we all enjoyed at the summer camp are fading. The BB are now well into our Winter session and the coming months will see members take part in the National Table Tennis, National Masterteams (Quiz) and a number of county events including 5 a-side football, unihoc and ten pin bowling. During the autumn members also drew pictures and sent messages to Buckingham Palace in remembrance of the loyal service given to the BB by HM The Queen who became our patron following the death of her father King George VI.

A major event for 2023 will be the running of the Severn Challenge. This is an opportunity for teens to paddle the River Severn along its original navigation from Pool Quay in Welshpool to Sharpness docks in Gloucestershire. Training for the event will take place over winter here on the River Thames with crews travelling to Wales at Easter to complete the challenge. This event has been won by Wallingford every year since it started and we will have a strong team again next year.

The BB in Wallingford offer a wide range of activities for all young people from school year 1 to 13 and beyond. If you have a son or daughter who would like a taste of adventure or just an opportunity to take part in arts, crafts, sports, games, adventure, get involved in community matters and learn some new skills, please contact us at WallingfordBB@gmail.com



PILATES on the green

What Christmas gift do you give the person who has everything except flexibility, or the time and space to reconnect with their mind and body?

We can tailor-make a *Christmas Voucher* for any of our classes! We're a friendly, well-established & spacious studio in Wallingford and we welcome clients of all ages and abilities.

- Ballet Barre Pilates Classes – NEW!
- Group Matwork Classes (live and on ZOOM)
- Tailor-made Equipment/Reformer classes
- 1-2-1 Appointments

Please contact us to discuss our range of Pilates classes!

Hilary: 07759219130 / 01491 826286
hilary@pilatesonthegreen.co.uk
www.pilatesonthegreen.co.uk

Shaun Guard

TV & WIFI SERVICES

- **Aerials** - supplied, repaired & poor reception solved
- **Satellite** - Sky Q dish upgrades, discreet dish installation also foreign TV
- **Internet** - blackspots cured, data cables to your TVs / computer
- **TVs** - hung on your wall or set up & tuned

 OXFORD AERIALS

Call Wallingford
01491 833282
www.oxfordaerials.co.uk

Have you a Lasting Power of Attorney?

It's not just for those getting older, anyone can have a stroke, accident, dementia... and lose mental capacity



HELP-PEN-HAND

Who will speak for you?

Learn about LPAs for just £35.
Contact me and I will help you. Val Wolsey
01491 836820 | HelpPenHand@gmail.com

communityfirst **100** years
oxfordshire

'The planning consultancy with a conscience'

We provide services to parish and town councils, private individuals, the voluntary and community sector, commercial clients, and landowners.

We understand communities and we know planning - advice is provided by chartered members of the Royal Town Planning Institute.

Visit www.communityfirstoxon.org.
Email info@communityfirstoxon.org or call 01865 883488 to talk to us about your needs.



St Mary's & St Leonard's
Wallingford
open to God, open to all

YouTube



8am St Leonard – Holy Communion
10am St Mary-le-More – Parish Communion (live-streamed)
with Children's Church or Family Service
6.30pm St Leonard – Evensong

www.marylemore.co.uk

Email: rector@marylemore.co.uk Tel: 07869 167174

Dr. A. Ratti BDS (Hons) Kings College London

ST MARY'S DENTAL PRACTICE

New patients welcome

Affordable quality private dental service
from a caring team

New maintenance plan available from Jan 2018

Call for more information

01491 825 252

www.stmarysdental.co.uk

IT'S BEGINNING TO FEEL A LOT LIKE CHRISTMAS AT THE WALLINGFORD BOOKSHOP

Leading up to Christmas there's a real buzz in the bookshop. New books arrive daily and in ever greater numbers, yet somehow the team manage to cast their magic and find the perfect spot for every book. I don't know how they do it!

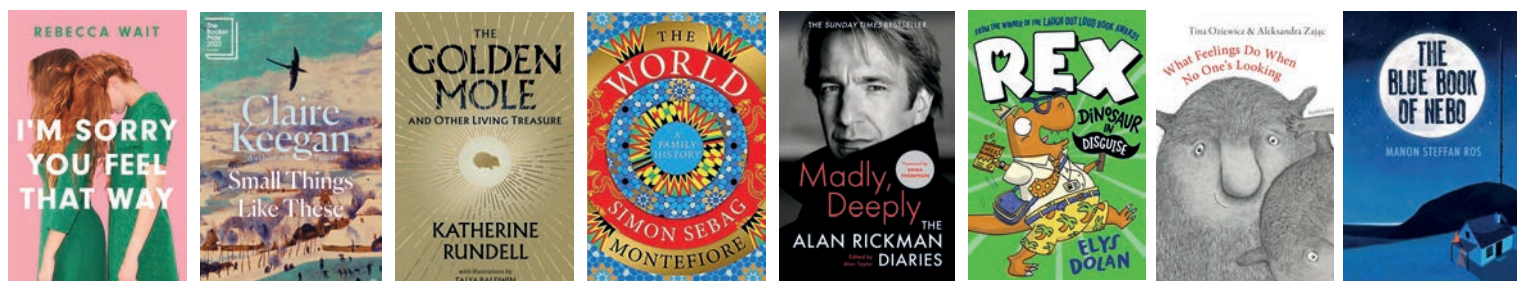


So, with Christmas just around the corner, here are our booksellers' favourite reads. As well as the big hitters – Robert Harris, Kate Atkinson, the two Richard's (Osman and Coles), Bob Mortimer and Maggie O'Farrell – we love Rebecca Wait's **I'm Sorry You Feel That Way**, Bobby Palmer's **Isaac and the Egg** and Gabrielle Zevin's **Tomorrow and Tomorrow and Tomorrow**, all of which stay with you long after you've read them. **Small Things Like These** by Claire Keegan is a novella perfect for cosy winter evenings, and **Still Life** by Sarah Winman will transport you to sunny Florence if the dark and the cold get a little too much. **Ascension** by Oliver Harris is our spy thriller of the year, and **Ordinary Monsters** by JM Miro is perfect if you enjoy a sweeping fantasy with a gripping narrative.

If you prefer facts to fiction, we love Katherine Rundell's passionate paean to nature, **The Golden Mole and Other Living Treasures**, SJ Axelby's **Interior Portraits – An Artist's View of Designers' Living Spaces**, Alan Rickman's Diaries **Madly Deeply**, and Simon Sebag-Montefiore's epic, **The World – A Family History**.

Some of our favourite children's books this year are **What Feelings Do When No-One's Looking** by Tina Oziewicz, **Marv and the Mega Robot** by Alex Falase-Koya, **Rex, Dinosaur in Disguise** by Elys Dolan, the **S.T.E.A.L.T.H.** series by Jason Rohan and **Ajay and the Mumbai Sun** by Varsha Shah. Our favourite teen read is **The Blue Book of Nebo** by Manon Steffan Ros. This is just a tiny selection of the books we have in stock, and we can usually order in most books that are in print for arrival within 24 hours.

Finally, a huge and heartfelt thank you from all of us for your support this year. We love the shop and we love that you love it too. Happy Christmas and happy reading! Helen, Ali & the team x **The Wallingford Bookshop 10c St Martin's St, Wallingford OX10 0AL**



Latest from the Sinodun Players theatre wardrobe team in Wallingford:

Our final ex-theatre vintage costume sale of 2022 will take place on **Sunday 4th of December**, when Wallingford businesses open for the annual Festive Shopping Event. Please find us in the foyer of **Corn Exchange theatre, where Wardrobe Warriors will present a Glitz and Glam Sale**: curated selection of festive ex-theatre pieces at bargain prices. Everyone is invited to browse vintage evening wear, party dresses, sparkly jackets, handbags and glitzy shoes, as well as warm winter coats, cloaks and leather jackets. **December 4th, 10-3pm, Corn Exchange, Wallingford.**



SINODUN PLAYERS WALLINGFORD

Wardrobe Warriors proudly present...

CORN EXCHANGE WALLINGFORD

GLITZ & GLAM

Ex-Theatre Wardrobe Vintage Costume

SALE

Specially curated selection for the festive season: vintage eveningwear at bargain prices! Party dresses, sparkly jackets, handbags and glitzy shoes, as well as warm winter coats, cloaks and leather jackets.

ON SUNDAY
4TH DECEMBER
10AM - 3PM
(DURING THE TOWN CHRISTMAS SHOPPING EVENT)

CORN EXCHANGE THEATRE FOYER
(MARKET PLACE WALLINGFORD OX10 0EG)

GRAB YOURSELF A PIECE OF SINODUN PLAYERS HISTORY, AND SUPPORT OUR AWARD-WINNING THEATRE!

@THEATREWARDROBE



**From
£895***
for a fully
fitted electric
garage door.

Gotta get a Garolla.



Garolla garage doors are expertly made to measure in our own UK factories, they're strong and solidly built. The electric Garolla door rolls up vertically, taking up only 8 inches inside your garage, maximising valuable space. Our expert local installers will fit your new door and they'll take away the old one too, so there's no mess.

Give us a call today and we'll come and measure up **FREE** of charge.

GAROLLA
ROLLER SHUTTER DOORS

www.garolla.co.uk

CALL US TODAY ON:

01235 280 072

MOBILE:

07537 149 128

LINES OPEN 7 DAYS A WEEK

*Offer valid for openings up to 2.4m wide & including 2 remote controls, 55mm white slats, internal manual override.

Sandberg Tablet Stylus £6.95



For the
technophobe



ColorWay Silicone Microfibre Cloth £2.65



ESET Internet Security for one device £29.50



Logitech Pebble Bluetooth & Wireless Mouse £19.95

For the
always on the move



13-14.1" Dicota Slim Eco Laptop Case £21.95



PREVO SP2010 4-Device Portable Charger £12.95



USB-A Travel Charger for use in UK, Europe, USA & Australia £9.50



Genius NX-7000 Wireless Mouse Blue/Black/Green/Red/White £10.95

For the
home worker

CHRISTMAS GIFT IDEAS

For the
difficult to buy for



Lenovo Full HD 1920x1080 USB 2.0 Webcam £41.95



piXL Single Monitor Arm Desk Mount £19.00



Microsoft Desktop 2000 Wireless Keyboard & Mouse Set £35.95



ENER-J Smart Bulb (Full colour spectrum) £9.95



ENER-J Smart Fingerprint Padlock £23.95



Tenda Beli SP6 Wi-Fi Smart Plug £10.50



ENER-J PRO Smart Wi-Fi Video Doorbell £67.50



Genius Keyboard Ergonomic Wrist Rest £8.95

PC TECHNICIANS

Unit B, The Croft, Whiteley Road, Wallingford, OX10 9RG
www.thepctechnicians.co.uk 01491 825449

Encore

The youth arm of the Sinodun Players, Encore group are recruiting young actors in year 1&2 for the Firstlights! Firstlights meet at The Corn Exchange every Wednesday where we play lots of drama games and take part in acting exercises as well as learning foundation skills and building on these each week to get the children's training off to a strong start. The class is inclusive and fun so come and join! If interested, please email encoreyouth@sinodunplayers.org.uk



Could you help a child to enjoy reading and change their life forever?

Volunteers needed in Wallingford schools

All it takes is one and a half hours twice a week during the school day as an ARCh volunteer.

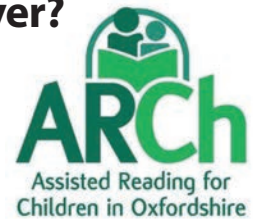
Sandra Selby, former ARCh Volunteer at Queensway Primary School Banbury for 10 years, said *"I always left school with a smile on my face. ARCh is a very rewarding charity to work with and the ARCh back-up team supports volunteers so well."*

Full training, ongoing support and travel expenses are provided.

www.archoxfordshire.org.uk

Tel 01869 320380

The charity obtains enhanced DBS checks on all volunteers before placement
Registered Charity Number 1146276



Christmas Tree of Gratitude

Once again, by kind permission of the Wallingford Town Council, the tree will be positioned at the Rest Gardens, next to Past & Present, and opposite Waitrose, where it will remain throughout the Christmas period until the New Year. Christmas can be a sad, lonely and painful time for people living with loss. We will be at the **Wallingford Christmas Market and Shopping event on Sunday the 4th of December** to help you leave your message for your loved ones whom you have lost (including animals), and for your loved ones who are ill or suffering. As usual, after the Christmas Market Event, you will be able to write your message and collect your bauble for the tree at the Town Information Centre under the Town Hall.

At the same event we will have a stall to raise funds for Compassion In World Farming (CIWF) by selling small Christmas gifts and some bric-a-brac. We hope to be placed near the Christmas tree. Do come and check out our many bargains. There will also be information on CIWF if you would like to find out more about this important charity.

We look forward to seeing you there.

Theresa Jordan
1 Thames Street, Wallingford. OX10 0BH
01491 836240
roytheresalodge@aol.com





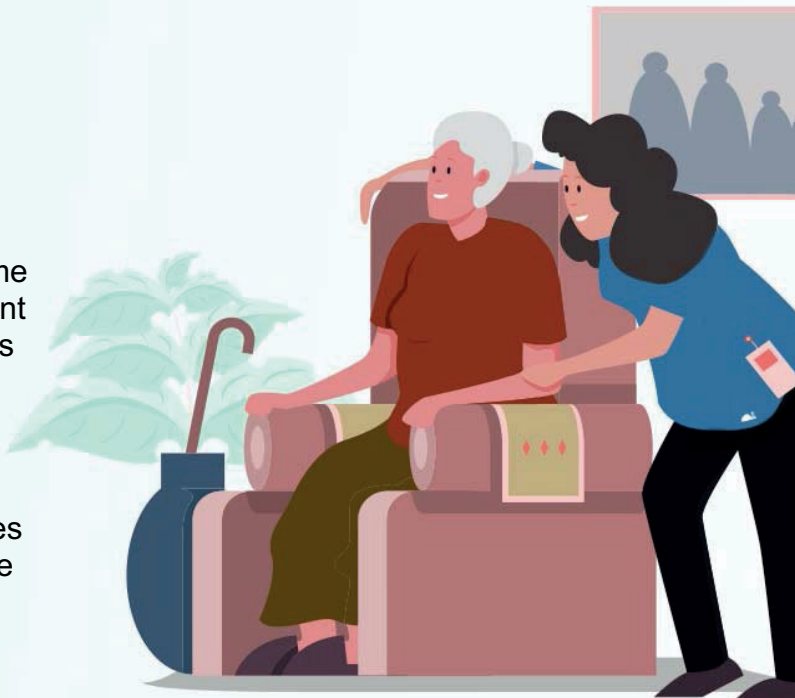
Q1Care

Do you, or a loved one, require support at home?

Q1Care prides itself in offering 'high quality' home care to enable people to stay safe and independent at home. We offer as much, or as little, support as required. From *companionship, practical help*, through to *complex needs*.

Work with us?

Become a valued employee, join a team that cares and make a difference to your community. Please email: heloise.slater@q1care.co.uk for more information.



Home Care across West Berkshire & South Oxfordshire

Email us: info@q1care.co.uk / heloise.slater@q1care.co.uk

Call us: 0118 932 3865

Visit us: www.q1care.co.uk




Crosby Engineering

Latest Diagnostic Software
All Makes & Models Serviced & Repaired
Laser 4 Wheel Alignment
MOT
Air Conditioning servicing
Free Local collection
Audi BMW Mercedes VW Specialist
Family Run Buisness In Wallingford Since 1980

01491 834544

Unit F The Croft
Whiteley Road
Hithercroft Ind Est
Wallingford
Ox109rg

No Problem No Call Out Charge

Gutters Cleared

We remove leaves - moss - grass - growth & debris

12,500+
★★★★★
REVIEWS

Photos
Before & After
We do a camera survey first

Go High
4 Storeys, Commercial,
Schools, Hotels & Industrial

Damp & Mould
Can be caused
by blocked gutters

Weight & Damage
Up to 50kg of debris
straining your gutters

Get an instant price
01491 815 450

or online
gutterpro.co.uk



Vacuum cleaners - repairs bags & accessories
Power washers Steam cleaners Carpet cleaners
Scrubber driers Window cleaning poles Sanders




CLEAN MACHINE

1 & 2 St. Peters Place, Wallingford OX10 0BG
01491 825600 Hire & Sales
www.machinesthatclean.com
e-mail: info@machinesthatclean.com



@cleanmachineltd Find us on Facebook /CleanMachineLtd



THE WALLINGFORD BOOKSHOP
10C ST. MARTIN'S STREET
WALLINGFORD, OXFORDSHIRE OX10 0AL
Telephone / Fax: 01491 834383
Email: books@wallingfordbookshop.com

We offer friendly informed assistance and an excellent range of books, audios and fine art stationery.

Many titles not stocked can be obtained within 24 hours.

British Modern Military History Society

Woodcote based BMMHS Raises over £5000 for Military Charities

The British Modern Military History Society (BMMHS), a not for profit society based in Woodcote near Wallingford, formed in 2019 providing monthly talks on military history of the last 150 years. In a welcoming, friendly atmosphere and providing drinks and refreshments, talks are given by authors, historians, and military services personnel. When COVID brought the live talks in Woodcote to a halt for 18 months, BMMHS moved to twice monthly talks on Zoom giving a wider range for both the audiences and speakers from across the globe. Donations from all live and Zooms talks are made to military charities.

BMMHS has also now published 3 books in the last 18 months of war time stories and memories of their supporters and their families. Under the banner of Glimpses of War and raising funds for the charity Blind Veterans UK (formerly St Dunstan's), over 250 people have contributed to the books telling of personal stories of great heroism, tragedy, resilience and sometimes humour, painting the picture of how people, military and civilian, coped with wartime experiences. Glimpses of the Falklands War was published in June 2022 to mark the 40th anniversary of the liberation of the islands. The books published on Amazon have raised over £2000 for BVUK to date and overall charitable donations have now exceeded £5000 from the talks and book sales.

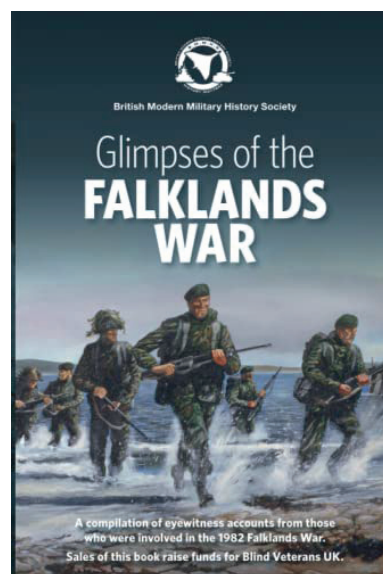
The talks in Woodcote planned for 2023 year include ones from well-known authors Guy Walters and Saul David, Rear Admiral Peter Wilkinson, RAMC surgeon David Vassallo and local historian Stephen Barker. Topics include Hunting Nazi War Criminals, the role of medics in modern warfare, the Cuban Missile crisis, Lawrence of Arabia, the Glider Pilot Regiment, the Battle of Jutland and Norwegian resistance and collaboration in WW2.

The full 2023 Zoom talk programme will be finalised shortly

Everyone is welcome to join our live and zoom talks, and is requested to make a donation to support the speaker costs and running expenses, as well as the charitable donations. Visit our website www.bmmhs.org for more details of our talks and activities. To register for our talks email us on info@bmmhs.org

Do also visit our two Facebook sites - British Modern Military History Society and Glimpses of the Falklands War.

All the Glimpses of War series of books are available on Amazon in paperback, hardback and kindle versions.



Wallingford Accessible Boat Club Edges Closer to it Goal

• Planning submission for new HQ receives widespread public support

The Wallingford Accessible Boat Club (WABC), with its Wheelyboat WOW-one, has made another positive step forward in achieving its long-held vision – to establish a permanent base in Wallingford to support its wheelyboat operations to enable disabled and less mobile people in the district, with their friends and families, to get out and about on the River Thames.

South Oxfordshire District Council (SODC) are managing the project comprising of accessible access to the river, a passenger embarkation ramp and slipway plus a storage cabin, toilet facilities and car parking at The Riverside, adjacent to Wallingford swimming pool. The necessary Planning application for the land-based facilities now in progress is in the Consultation phase and has received widespread public support.

WABC Chairman, John Jenkins MBE commented: *"We still have a long way to go but the public support we have received for our project is highly encouraging and hopefully will be reflected in the Planning Officer's decision due on 16th November – all fingers crossed! SODC Planning permission will be a big relief but is just one of the hurdles on our rocky road we need to cross, the other being agreement to the river-based facilities by the Environment Agency, the application for this being in progress now. If we can achieve that one too it will be a huge step forward and we can then start looking towards the procurement and build phases. All being well we hope to take delivery of the completed project by the middle of 2023."*

Jenkins continued: *"We have been striving to achieve our own base, our HQ, for over 6 years now and at times it has been really tough going but we can see ourselves gradually getting there at long last."*

"I do want to take the opportunity to thank the current SODC Project Team who are running with the development – whilst at times I wish progress could be faster, we are undoubtedly slowly moving forward. We are very grateful for the use of the temporary facilities in Benson where we have operated this year and we expect to do so for the first half of next year but it will be truly wonderful when we can move into our new home and say to one and all 'We are there!'"

For further information contact John Jenkins at john.jenkins@wabc.org.uk





THE MAKER SPACE

WORKROOM | CAFE | STORE

OPEN 7 DAYS A WEEK
9am – 4pm

Breakfast 9am – 11.30am

Lunch 12pm – 3pm

The Maker Space at The Crown
Gangsdown Hill, Nuffield
Henley-on-Thames, OXON RG9 5SJ
Tel: 01491 642300
www.themakerspace.co.uk



RIBIZLI Cafe

Welcoming Café specialising in healthy Vegetarian & Vegan food

facebook 5 Star Customer Reviews
Google Reviews 4.8 ★★★★★
tripadvisor

- Speciality Coffee
- Loose Leaf Teas
- Delicious Breakfasts
- Healthy Lunches
- Artisan Bread & Pastries
- Homemade Cakes
- Super Smoothies
- Amazing Ice Creams
- Milkshakes

Tuesday to Friday 9:30-3:30
Saturday 9:30-4:00

53 St Mary's Street, Wallingford, OX10 0ER
www.ribizli.co.uk – 07926 870082

WALLINGFORD TEA & COFFEE

We roast High Grown Coffees and we stock Quality Teas together with a range of Herbal beverages and Spices plus a wide variety of Tea and Coffee accessories

Wallingford Tea & Coffee Company Limited
6a St. Martin's Street
Wallingford, Oxon. OX10 0AL
Telephone: 01491 836263
kitchtea@gmail.com



Londis


38 Sinodun Road, Wallingford Tel: 01491 837932

Fruit & Vegetables • Newspapers • Magazines
Beers & Wines • Mobile Top-up Vouchers

Plus the National Lottery

best value locally

Opening hours:
Mon-Sat. 6.00am-8.00pm
Sunday 6.30am-1.00pm



Avanti ITALIAN RESTAURANT

Dining In
Takeaway
Delivery Service

Tuesday to Saturday

Order online
avantiitalian.com
or call 01491835500



Wallingford Local Producers Market

Fresh, local food and handmade crafts

Every Saturday from 10am – 12:30pm

Local

St Mary's Church
Wallingford Market Place

December 3rd, 10th and 17th
January 7th, 14th, 21st and 28th

wlp.m.org.uk [@wallingfordlocalproducersmarket](https://www.facebook.com/wallingfordlocalproducersmarket)



Red Lion

Brightwell cum Sotwell
Corinne & Mouse Welcome you.
Pop in and Say Hello

The Street, Brightwell-cum-Sotwell, Oxfordshire OX10 0RT
01491 837 373
www.redlionbrightwell.co.uk
FB: RedLionBrightwellcumSotwell



**Don't forget:
Tell them you saw
their advert here!**



Our fabulous advertisers make your magazine possible – please use them

Wallingford Wine of the Month – Ramos Pinto LBV Port

Happy December everybody! With the streets of Wallingford lighting up, and people wrapping up against the chill, it's impossible not to think of Christmas and the days of celebration ahead. But there's one Christmas tradition I'd love to see the back of – that of the dusty bottles of port and sherry being brought out once a year, largely ignored, and hidden away again for the next 11 months.

Fortified wine is a luxurious treat, whether it's a dry summery Manzanilla, a refreshing white port and tonic (trust me!) or a warming glass of ruby with a cheeseboard or on its own by the fire. And this month's wine of the month is a delicious LBV from Ramos Pinto, a high quality house with nearly 150 years of experience to draw on. Now owned by Louis Roederer, producers of Cristal, they are at the cutting edge of vineyard management and retain a deserved reputation for excellent wines.

Port is a magnificent drink, originally created when Britain, who unusually were at war with France, found their supply of claret had completely dried up. Calling on its oldest ally for reinforcement, the Portuguese sent their Douro reds, which sadly spoiled in the heat and turbulence of the sea journey. To make it robust enough to survive the trip, brandy was added to the barrels, and the first iteration of port was born, to great acclaim.

Fine ruby port (the deep purpley-red type, rather than the orange-tinged tawny) comes in two categories: Vintage and Late Bottled Vintage (LBV). Produced no more than 3 times a decade, Vintage Port is rare, generally expensive, and requires at least 20 years before it is ready to drink. LBV port spends longer in barrel before bottling, can be made each year, and is generally good to go within 5 years of production.

This bottle is from 2015, a very dry year which produced grapes of great intensity and depth. The port itself is characteristically sweet, though less simply sugary than most, showing an incredible concentration of flavour: raspberry and red cherry at the start, with a backbone of sweet spice and a finish of darker fruit and a hint of dark chocolate. It's long and powerful, and the kind of glass you can linger over all evening if you have the discipline, or enjoy as a complement to cheese and nuts at the end of dinner. It's a little more expensive than the likes of Croft and Taylor's, but I promise if you do pick a bottle up, you won't want to hide it away at the back of your drinks cabinet.

Wishing you a very merry Christmas from all at Grape Minds; thank you for a fantastic year. We hope to see you soon, and please remember: Port is for life, not just for Christmas... Michael Jelley is the Director of Grape Minds Wallingford

**WOW
SPECIAL
OFFER**



Wine Name: Ramos Pinto Late Bottled Vintage **Producer:** Ramos Pinto **Grapes:** Tinta Roriz, Touriga Nacional, Tinta Barroca **Region:** Douro Valley, Portugal

SPECIAL OFFER! Exclusive Price: £20.99/bottle until the next issue. Just mention Window on Wallingford in store!

GRAPE MINDS

Christmas Time, Mistletoe and Wine. And beer, whisky, cognac, port, Champagne, gin, and more. To give, to serve or just to enjoy!

It's the most wonderful time of the year! But before the fun begins, there are presents to be bought, meals to be planned, and supplies to be sourced. But don't worry - we can help!

We have a great selection of wine, spirits and beer for all occasions and budgets, from £7.50 to £300, and we can help you match drinks to food, or find the perfect gift for almost anybody.



To make it even easier, we offer:

- Free glass hire
- Free delivery
- Bottles open to taste
- Regular tasting evenings
- Gifts, bags, wrap and vouchers

Pop into our shop next to the Goldsmith's Lane car park and we'll help you get the party started.



For your Christmas and New Year festivities, let Wallingford's Independent Wine Specialist put the sparkle in your celebrations!



Oxfordshire Business Awards:
Retailer of the Year 2022

10 St Martin's Street, Wallingford OX10 0AL 01491 824549 wallingford@grapemindsdrinkalike.co.uk

GRAPE MINDS

Hand-selected wines, spirits and beers



- Free delivery for 6 or more bottles
- Party services (sale or return, free glass hire & more)
- Friendly advice
- Tasting evenings
- Wine open to try

Oxfordshire Business Awards



Retailer of the Year 2022

10 St Martin's Street, OX10 0AL

01491 824549

www.grapemindsdrinkalike.co.uk

Manor Café at Howbery

Open: 9am-4pm, Mon-Fri

MANOR CAFÉ
at
Howbery



- ✓ Hot and cold drinks, homemade cakes: all day
- ✓ Breakfast: 9.00am - 10.30am
- ✓ Paninis, baguettes and baps: 11.00am - 2.00pm
- ✓ Hot and cold lunch options: 11.30am - 1.30pm

Order online or at service counter | Outside and indoor seating areas
Takeaway service | Beautiful grounds | Ample parking

www.howberypark.com



Shellfish Com
Restaurant & Bar

28 High Street
Wallingford

www.shellfishcom.co.uk

01491 832 807

wallingford@shellfishcom.co.uk

Friday 2nd, 9th & 16th December
Saturday 3rd, 10th & 17th December
7PM TO 12:30 AM

BOOK YOUR CHRISTMAS PARTY NIGHT

The George Hotel

BAR OPEN UNTIL MIDNIGHT & DJ UNTIL 12.30AM
ONLY £34.95 PER PERSON

FOR MORE INFORMATION OR TO MAKE A BOOKING
CONTACT US ON 01491 836665
HIGH STREET - WALLINGFORD - OXFORDSHIRE - OX10 0BS
E-MAIL: INFO@GEORGE-HOTEL-WALLINGFORD.COM

THE COOKHOUSE — DELI — WALLINGFORD

We supply traditional delicatessen styled goods, varying from speciality store cupboard ingredients all the way through to indulgent treats in local cheeses, locally brewed ales and perfect accompaniments to help create the perfect family kitchen.

14 Market Place, Wallingford OX10 0AD

EST. 1995
Mr & Mrs Park's
FAMILY BUTCHERS

High welfare local produce
Knowledgeable and friendly service
A great range of local cheese, wines and much much more!

Don't forget to order for Christmas! Orders being taken from the 1st November until the 11th December however we recommend getting your orders in sooner rather than later to ensure availability. And of course, wishing you all a very Merry Christmas to your family from ours x

5 Pound, Cholsey, Wallingford, Oxfordshire OX10 9NS
01491 651300 • info@mrandmrsparks.co.uk • www.mrandmrsparks.co.uk



This isn't same task, different day.
It's feeding families across the UK.

We're hiring Customer Assistants and
Shift Managers in your local store!

Customer Assistants: £10.90 - £12.00 per hour*

Shift Managers: £11.90 - £13.00 per hour*



30 days' holiday
(pro-rata)



10% employee
discount



Enhanced
maternity pay



Gympass
membership



Rotas published
3 weeks in advance



Loads
more

At Lidl, we're always looking for ways to reward our colleagues for their hard work. That's why we offer each and every one of them brilliant benefits such as training and development opportunities, our highest ever rate of pay, our pension scheme, and more.

And whatever it is you're looking for in your next role – be it leadership, support, or feeling part of a team – you're sure to find something that works for you across our Customer Assistant and Shift Manager roles.

Apply for a career a Lidl less ordinary.

 lidlcareers.co.uk

*Dependent on role and shift.

Happy Holidays



Excellence in Independent Education
for Boys and Girls aged 3-18
www.cranfordhouse.net

With very best wishes for a Merry Christmas and a Happy New Year

HAVE TROUBLE WITH YOUR TREES?

NEED SOME HELP? ASK THE EXPERTS

- Tree removal
- Tree thinning
- Stump grinding
- Hedge trimming
- Tree pruning
- Tree felling
- Landscaping
- Fencing

We are city & guilds nptc qualified and insured
you can feel safe dealing with us.

Call now to see how we can help Free no obligation quote

1st CLASS TREE SURGEONS

E. quote@firstclasstreesurgeons.co.uk

T. 07889 881 525
firstclasstreesurgeons.co.uk

Thinking of selling your artwork?

Mallams
1788



Design & Modern Art Specialist Max Fisher,
is available to give free confidential valuations on any
piece(s) you are considering selling at auction.

Home Visits also available

Enquiries: 01865 241 358 or max.fisher@mallams.co.uk
www.mallams.co.uk

WEPS

WALLINGFORD ELECTRICAL & PLUMBING SUPPLIES

OPEN TO THE
TRADE & PUBLIC

☎ 01491 827825

✉ SALES@WEPS.ORG.UK

UNIT 1 MOSES WINTER WAY

KJ MOBILE HAIR

Katie Drew
Cutting Technician

Phone/Text 07730400595
Email: kjmobilehair86@googlemail.com

HAYNES

Car Care Centre

servicing...batteries...tyres...fantastic value

Bushells Business Park, Lester Way,
Wallingford Oxon OX10 9DD

www.haynes-car-care.co.uk

- All Makes Servicing and MOT's
- Parts & Accessories
- Air Con Re-Gas
- Courtesy Car
- Batteries & Tyres
- 4 Wheel Laser Tracking



Proud Sponsors of Wallingford Vehicle Rally & BunkFest

01491836097