

HOMEBASE

PROPERTY

SALES • MANAGEMENT • LETTINGS

We'll
get you **MOOVING**





Discover our unique dementia care

So many things define us as individuals, but dementia doesn't have to. We see the person behind it, and help them live the life they want, to the full. As the only care home group with its own accredited City and Guilds dementia training 'My World', innovative dementia friendly design, and support for the whole family, you can trust that we go further.

Our care home
is open for
viewings

Call us on freephone 0808 223 5401
caringhomes.org/benson-house
Churchfield Lane, Benson,
Wallingford, Oxfordshire, OX10 6SH

Benson House



CARING HOMES



Welcome to your community magazine

To advertise in Window on Wallingford please contact us on: info@windowonwallingford.co.uk

Adverts:

Must be sent in JPEG or PDF formats in their highest quality.

Advert sizes:

95 mm x 53 mm
95 mm x 110 mm
192 mm x 50 mm
210 mm x 297 mm
210 mm x 148 mm

Articles:

Supplied in MS word. Please provide any photos or images including logos separately (jpeg files) that you would like in your article.

Deadline date to submit: 7th April

Editor: Naomi Reddyhoff

info@windowonwallingford.co.uk

Marketing, Accounts & Administration: Jessica Dovey

jess@windowonwallingford.co.uk

Distribution: Naomi Reddyhoff

info@windowonwallingford.co.uk

Advertising Sales: Lesley Longden

lesley@windowonwallingford.co.uk

Cover Photo: Island Farm Donkey Sanctuary

 [@windowonwallingford](https://www.facebook.com/windowonwallingford)

 [@window_on_wallingford](https://www.instagram.com/window_on_wallingford)

Whilst every effort is made to ensure the accuracy of information printed in the magazine, the Editor and Publisher do not accept any responsibility for the consequences of any errors that may occur. Material published in the Window on Wallingford Magazine is copyright, but normally the Editor will be pleased to grant permission for it to be reproduced, if asked on each occasion. The opinions published in this magazine are not necessarily those of the Editor, Publisher or WoW.

Adverts will continue to run unless cancelled.

Island Farm Donkey Sanctuary is based at Brightwell-cum-Sotwell, Nr. Wallingford in South Oxfordshire and has been a registered charity since July 2000

The Sanctuary looks after over 130 donkeys, many of who arrived with some or all of the problems associated with neglect and abuse. As a donkey can live to 45-50 years it is important that they now spend their days in comfortable, caring and friendly surroundings.

Nearly all of the donkeys and many of the other animals at the Sanctuary have been rescued and it is only through continuous fund raising that this can continue. The donkey adoption scheme is one way of helping and makes an unusual gift for a relative or friend. The sanctuary is usually open every day from 11 am to 4 pm and visitors are welcome. Please contact the sanctuary prior to visiting as we are currently closed due to Covid-19 restrictions.

Jack was rescued with three other donkeys in 1995 from a village in the Rhondda Valley. At the time he was suffering from malnutrition and had severe pneumonia and took several months to recover. He was a lovely donkey, always happy to be fussed and he will be greatly missed by everyone at the sanctuary.

Hi Everyone

The Easter Bunny will be arriving soon, the blossoms are in bloom; the daffodils are out, and everything is springing into life. Such a hopeful time of year.

It has been a very hard couple of years and as I write this there is a war in Ukraine. Many people are having events to raise much needed funds; **Pilates On the Green** is running a couple of Workshops. **2nd & 3rd of April**. Saturday & Sunday Stretch and Strengthen, 10am to 11.15am. For more details contact: hilary@pilatesonthe.green.co.uk **Saturday 9th April, Jazz for Ukraine** is on at the Corn Exchange, 7.30pm with an all-star line-up. Tickets are £15 from the Corn Exchange Box Office. www.cornexchange.org.uk

We have a new monthly feature in WoW – The Family Page. This is an opportunity for all Youth Organisations in Wallingford and surrounding areas to have a little write up. Who they are, what they do and when, how to join in. If you, or someone you know, would be interested in being featured on our Family Page, please get in touch with us. lesley@windowonwallingford.co.uk

We are still needing a couple of volunteers to deliver the magazine for us. It really, only takes about one hour of your time, once a month. Great way to get a bit of exercise, getting to know your neighbours and having a bit of a chat along the way. Please get in touch with us. info@windowonwallingford.co.uk

Let us know all your news, any new clubs starting up, or re-starting. The What's On section is getting quite full, lots of exciting things to do in Wallingford. Deadline for the May issue is 7th of April. Have a fabulous April, try not to eat too many Easter Eggs.

Stay safe and have fun.

Naomi x



WE NEED YOU!

We are needing some new volunteers, distributors, and deliverers, so if you have a couple of hours spare each month, please get in contact with us.

info@windowonwallingford.co.uk

WINDOW ON WALLINGFORD
WOW



Sunshine Painting & Decorating

LANCE THOMPSON
FRIENDLY RELIABLE SERVICE

For All Your Decorating Needs
Call For A Free Estimate.
07780 221950

lance.sunshine@btopenworld.com www.sunshinedecorating.co.uk

 [@sunshinedecorator](https://www.facebook.com/sunshinedecorator)  [@sunshine_pd](https://twitter.com/sunshine_pd)

FULLY INSURED | CHOLSEY, OXON



**KJ MOBILE
HAIR**

*Katie Drew
Cutting Technician*

Phone/Text 07730400595
Email: kjmobilehair86@googlemail.com



Faith cometh by hearing and hearing by the Word of God (Romans 10:17, the Bible)

Wallingford Christian Assembly brings you:
A message of Hope from the Bible

Join us online
Every Sunday @ 17:00
20 min message

We invite you to hear a short message from the Bible, available from the comfort of your own home.

To watch live:
Zoom ID: 491 229 776
Passcode: 316

Not able to join on a Sunday – catch up on demand:

YouTube @Wallingford Christian Assembly
Facebook @GodsGoodNews (God's Good News for South Oxfordshire)

Wallingford Christian Assembly
www.wallingfordchristianassembly.org.uk

Londis
38 Sinodun Road, Wallingford Tel: 01491 837932

Fruit & Vegetables • Newspapers • Magazines
Beers & Wines • Mobile Top-up Vouchers
Plus the National Lottery

best value locally

Opening hours:
Mon-Sat. 6.00am-8.00pm
Sunday 6.30am-1.00pm



Illumin-Nation Ltd
5 St Peters Place, St Peters Street
Wallingford, Oxon OX10 0BG

allan.pridle@btconnect.com
www.illumin-nationltd.co.uk 01491 833505

Wallingford Methodist Church
St Leonard's Square
www.wallingfordmethodistchurch.org.uk

Sunday Worship 10.30 am and 6.30 pm.
Junior Church and Creche at 10.30 am.
EVERYONE WELCOME

Thursdays 10.30 - 12.00
Call in for coffee and a chat

For details of other activities, including mid-week prayer & house groups, please contact our minister, Rev. Jocelyn Bennett
Telephone: 01235 813242

Dr. A. Ratti BDS (Hons) Kings College London

ST MARY'S DENTAL PRACTICE

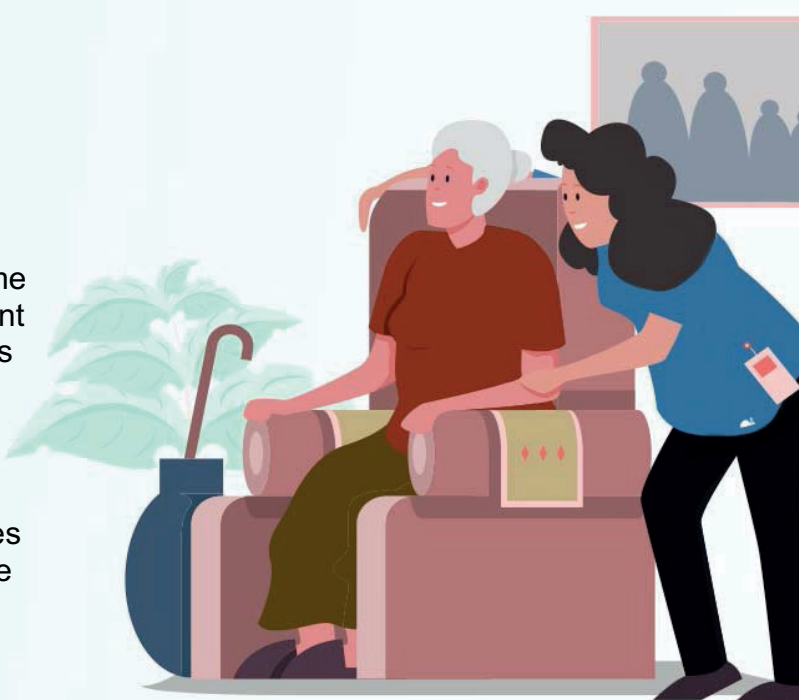
New patients welcome
Affordable quality private dental service
from a caring team
New maintenance plan available from Jan 2018
Call for more information
01491 825 252
www.stmarysdental.co.uk



Do you, or a loved one, require support at home?

Q1Care prides itself in offering 'high quality' home care to enable people to stay safe and independent at home. We offer as much, or as little, support as required. From *companionship, practical help*, through to *complex needs*.

Work with us?
Become a valued employee, join a team that cares and make a difference to your community. Please email: heloise.slater@q1care.co.uk for more information.



Home Care across West Berkshire & South Oxfordshire
Email us: info@q1care.co.uk / heloise.slater@q1care.co.uk
Call us: 0118 932 3865
Visit us: www.q1care.co.uk

Inspected and rated Good
Care Quality Commission



WOW WHAT'S ON!

WALLINGFORD ALLOTMENTS & GARDENS SOCIETY (WAGS)

A huge thank you to all our customers and volunteers who continue to support the Wallingford Allotments and Gardens Society.

Our Garden Store is now open every Saturday 11am-12 noon in Centre 70, there is parking for WAGS customers and we share the space with the Wallingford Local Producers Market. We have good levels of stock on peat-free composts, fertilisers and nutrients, weed and bug control, plants supports, plant canes, labels, grass seed, netting, membrane, fleece, ornamental bark, horticultural grit, aquatic supplies, grow bags and more. The store remains closed November, December, January and also for the month of August.

We also have the Dobies Seed and Plant catalogue available with a members discount code on seed orders.

Please visit our Facebook page <https://www.facebook.com/WallingfordAGS/> for updates and news; we will be publishing the dates of the May Plant Sale and the Autumn Show very soon.

Happy Growing!
Jayne Page on behalf of the WAGS Committee

BENSON GARDEN CLUB

We meet on the 1st Thursday every month at Benson Parish Hall, Sunnyside, Benson at 7.45pm. We have speakers October through to April after which we go out and about visiting gardens. All welcome, visitors £5.

Find us on Facebook/Benson Garden Club
<https://bensongardeningclub.weebly.com>

HENLEY AND DISTRICT STAMP CLUB

By the time you read this our popular Annual Auction will have taken place with hopefully happy visiting and on-line bidders from near and far.

April 13 – Postcard Evening when members will give displays of their Postcard collections,

April 27th Guest speaker to be confirmed

Meetings are held the **2nd and 4th week of the month at Bix Village Hall at 7.30 p.m.** Visitors and new members are welcome. Further details can be obtained by phoning **01491 681739** or on our website: - www.henleyphilatelic.org.uk

WALLINGFORD CHURCH CHOIR Stabat Mater on Good Friday

'Stabat mater' are the opening words of a celebrated mediaeval prayer - to quote more fully 'Stabat mater dolorosa, iuxta crucem lacrimosa, dum pendebat filius' 'stood his mother sorrowful, weeping by the cross, while her son was hanging there'. So it's about Jesus' mother Mary at the Crucifixion. This powerful and harrowing prayer has been set to music by many composers, Pergolesi among the most well known. His setting has been arranged for 4-part choir and was to have been sung in 2020 by Wallingford Parish Church Choir, but now they're back in 2022 to perform it in St Mary's Church on Good Friday 15 April at 7pm with Musical Director Judith Ward, accompanied by Gaby Clements on the organ. This is a fine piece of music, entirely apt for Good Friday, and resonates with the sad events in the world today. Entry is free - it's treated as a church service - and there will be a retiring collection **in support of UK for UNHCR aid to Ukrainian refugees**. . All are welcome!

CrowFest is a brand new music festival for 2022. It is an exciting family-friendly festival that can be enjoyed by everyone.

The festival will be held on the Crowmarsh Recreation Ground on the 3rd June 2022, 18:00-23:30pm.

There will be five hours of magnificent music alongside, family friendly entertainment, licensed bar & food.

We are very excited to announce that C U Tuesday will be headlining CrowFest. Adam Isaac & DJ Richard Strange will also be performing. <http://crowmarshfc.co.uk/>

WALLINGFORD PHOTOGRAPHIC CLUB continues into spring with a programme of events and talks on **Thursdays at 7:30pm**. We are returning to Crowmarsh Pavilion soon, but meetings are mostly held online at the moment. In April we have a club competition for members on 7th (travel and portfolios, online) and a members' evening where we'll be going out for the evening to take photos in Wallingford - on 14th; guests welcome though! We then travel (online of course) to Asia with Chris Hilton on 21st ("**Time Travel in South East Asia**"). On 28th Jane Goodall shows us "**The Beautiful Light**", her fleeting moments of landscape, nature and people- also via Zoom. In May the season closes with our end of season competition and AGM, then we're looking forward to meeting regularly in person again in Crowmarsh in September.

RIVERSIDE REPAIR CAFÉ

Saturday 16th April 10am-1pm

If you have something broken or needing repair, and would like help learning how to repair it*, you are welcome to bring it to the third Riverside Repair Café, Saturday 16th April, 10am-1pm, in the garden of Eastgate House, 1 High Street, Wallingford. Access is via the Green Door opposite the Boat House pub, just next to Wallingford Bridge. Volunteer repairers will be there rain or shine to help you with your repairs: Woodwork, Sewing, Sharpening, Bicycles, Small Electricals, China, etc. Light refreshments available.

www.facebook.com/groups/RiversideRepairCafe

* Have something fixed that would otherwise go to landfill and learn a new skill at the same time. Please note all repairers/teachers are volunteers, so all repairs are free, but with no guarantees of success.

PETANQUE WALLINGFORD are holding 'come and try sessions' on **Tuesday 5th April and Sunday 10th April at 11.00am at Wallingford Sports Park, Hithercroft Road, Wallingford, OX10 9RB**. The Club was formed in 2010 and has a thriving membership of enthusiastic players. Petanque is one of the most inclusive sports. It can be played on equal terms by practically everyone, all ages, whole families, people with reduced agility and even some disabled. We can provide the introduction and boules so if you are interested in playing recreationally or competitively come and join us. Further information can be found on the Club web site www.petwal.co.uk or by contacting petanquewallingford@gmail.com



THE WALLINGFORD BOOKSHOP
10C ST. MARTIN'S STREET
WALLINGFORD, OXFORDSHIRE OX10 0AL
Telephone / Fax: 01491 834383
Email: books@wallingfordbookshop.com

We offer friendly informed assistance and an excellent range of books, audios and fine art stationery.

Many titles not stocked can be obtained within 24 hours.

Busy Baskets Nursery trading as:



A multitude of varieties & colours of bedding, basket, border and patio plants all grown on the nursery
Best selection of Winter/Spring flowering Pansies
Basket & Container Planting Service

Autumn Season Sept - Nov • Open 7 days a week 10am - 5pm
142a Wantage Road, Wallingford, OX10 0LU.

01491 833 831 www.purelyplants.co.uk

Quakers

Are you interested in exploring a different spiritual path?
As Quakers we help each other as we live our lives, guided by experience rather than doctrine.

Come and find out

Sundays 10.30 am

Quaker Meeting House, 13 Castle Street, Wallingford

Website: midthamesquakers.org.uk



CARE DRY CLEANERS

10B St. Martins Street, Wallingford OX10 0AL

Tel: 01491 837318

- Suede Leather • Alterations • Press Services • Wedding Dresses •
- Settee Covers • Rugs • Laundry • Duvets • Curtains



Mum and baby/toddler fitness classes running in Cumnor, Didcot, Wallingford & Oxford

Contact Jen to book your free trial

www.mumtomumfitness.com

07771 848387 | jen@mumtomumfitness.com

[mumtomumfitness](https://www.facebook.com/mumtomumfitness) | [@mumtomumfitness](https://www.instagram.com/mumtomumfitness)

SHOE REPAIRS

ENGRAVING

KEY CUTTING



FEET FIRST

21 St. Mary's Street, Wallingford
Contact Gary on: 01491 825224



WATCHSTRAPS BATTERIES

STITCHING REPAIRS

TRAVEL GOODS LUGGAGE

Benson Angling Centre

Your Friendly Local Angling Centre

Unit 3, Benson Waterfront,
Benson Wallingford OX10 6SJ

Tel: 01491 838288

Email: dibby1949@yahoo.co.uk



Stockists of Drennan E.S.P. Dynamite Baits, Sticky Baits, Baitech, Dead Baits and Live Baits Available. We buy and sell all used angling items



St Mary's & St Leonard's
Wallingford
open to God, open to all

YouTube



8am St Leonard – Holy Communion

10am St Mary-le-More – Parish Communion with Children's Church, All Age Worship or Family Service (also live-streamed)

6.30pm St Leonard – Evensong

www.marylemore.co.uk

Team Rector: The Revd David Rice Tel: 01491 202188



THE POSITIVE OUTCOMES GROUP

Electrical

Plumbing

Fire and Security

Call: 01491 835875

Email - reception@groupga.co.uk

Unit H Moses Winter Way, Wallingford, OX10 9FE



The Little Artichoke

Experienced local chef available for event catering, from BBQs & buffets to fine dining dinner parties

- We specialise in shellfish, but our capabilities are endless
- We have an extensive menu & weekly specials
- We also have various cooking classes now running, from Lobster Thermidor to Beef Wellington

Contact Jason or visit website for further information
07960 974057 | thelittleartichoke@outlook.com | www.thelittleartichoke.co.uk

Wallingford Museum News

We are delighted that the museum will be open from March 1 2022 with the exception of the Wallingford story, which is under development. Please check the web site for opening times.

www.wallingfordmuseum.org.uk



This year's exhibition, "**Caring for the Sick - A history of Wallingford's Hospitals**" which was devised well before the current crisis, traces the fascinating history of Wallingford's hospitals, caring for the sick in the town from medieval times to the present day. Its portrayal of the challenges of dealing with plague, leprosy, smallpox, scarlet fever and other such outbreaks, as well as more common illness and disabilities, brings the past vividly to light. Ironically, it puts our present troubles in their historic context.

Wallingford Museum has proudly received a painting by GD Leslie on behalf of the nation.

GD Leslie's painting 'A Thameside Conversation' has been acquired for the nation through the Acceptance in Lieu Scheme, which is administered by the Arts Council, and allocated to Wallingford Museum.

GD Leslie (1835-1921) was a well known Victorian artist who lived in Wallingford at Riverside in Thames Street between 1884 and 1891. He was an ardent lover of nature, and particularly of the River Thames and this painting depicts a scene on the riverside, probably at Pangbourne. It was exhibited at the Royal Academy in 1864.

Our amazing exhibit, the new Wallingford castle model is also on display. Created in collaboration with Ben Taggart, Wallingford Museum's dedicated team of researchers have worked with architectural model maker, Ben, to create a 1:300 scale model (1.5m x 1.6m) of Wallingford's royal castle as it may have been in the mid-14th century. The Wallingford Historical and Archaeological Society zoom talk on 9th March shares this fascinating journey with its membership. <https://www.twahas.org.uk>

The Museum will running Easter holiday workshops for families. Please watch the web site for details.

www.wallingfordmuseum.org.uk

MUSEUM BOOKSHOP

We have an excellent selection of good second-hand books (both fiction and non-fiction) at sensible prices. We look forward to seeing you - it's free to browse!

THE WALLINGFORD HISTORICAL AND ARCHAEOLOGICAL SOCIETY

13 April (Weds)

Marie-Louise Kerr: 'Oxfordshire on Canvas'

Marie-Louise's presentation 'Oxfordshire on Canvas' is a visual tour of Oxfordshire which looks at how artists, both national and local, have captured our beautiful area and been influenced by it.

Some of the artists included are:

- George Dunlop Leslie (who lived and painted in Wallingford)
- Paul Nash (who created many works featuring The Wittenham Clumps)
- John Piper (whose works are celebrated at the River & Rowing Museum)

11 May (Weds)

Melanie King: 'Can onions cure earache? Medical Advice in the 18th century.'

Sue Wright, Wallingford Museum

THAMESIDE (WALLINGFORD) u3a

How much fun can you have for £12.50 per year?

Well, if you are semi or fully retired why not give the u3a a try?



Already this year we have started new interest groups for Climate Change, Cycling, Knock around Golf, Acoustic Guitar, Ipad Users and Jazz Appreciation. Our groups co-ordinator is working hard to keep up!

Our March talk was on the "Last Supper in Pompeii" and this month we will learn more about "Darwin and the Beagle".

The aim of these talks is that they should be interesting and informative; and they're also part of our social ethos to get together and learn new things. For those members who are unable or not confident about attending we also offer a live streaming service.

Monthly outings continue to be popular and are getting into their pre-covid swing (long may that continue). The day before the invasion of Ukraine we visited the Imperial War Museum where the new Holocaust Gallery provides a sobering reminder of the horrors of war, And what that country went through.

March saw us visiting Cirencester for the Corinium Museum and Cirencester Park and this month we are going to Brighton and the Pavilion. Future proposals include "The Watercress Line" and "Regents Canal". There's no need to worry about driving as we take a coach from the library with a pick-up in Crowmarsh five minutes later. On arrival at the venue we usually start with a coffee, then we sometimes have an introductory talk or a specially arranged tour.

Prospective new members are welcome at our informal coffee mornings held at Centre 70 on the first Friday of the month from 10.30 am to noon. Our monthly speaker meetings are held in St. Mary's Church on the third Wednesday at 2pm. More information is on our website www.wallingfordu3a.org where you can find an enquiry form.



Now only
£895*
for a fully
fitted electric
garage door.

WAS £1,354 INCLUDING VAT.

Gotta get a Garolla.

WHAT'S INCLUDED WITH EVERY DOOR:

- FREE EXPERT MEASURING & FITTING
- 2 REMOTE CONTROLS
- ACOUSTIC & THERMAL INSULATION
- FREE DISPOSAL OF YOUR OLD DOOR
- AVAILABLE IN 21 COLOURS



Garolla garage doors are expertly made to measure in our own UK factories, they're strong and solidly built. The electric Garolla door rolls up vertically, taking up only 8 inches inside your garage, maximising valuable space. Our experienced installers will fit your new door and they'll take away the old one too, so there's no mess.

Give us a call today and we'll come and measure up completely **FREE** of charge.

GAROLLA
ROLLER
SHUTTER
DOORS 

www.garolla.co.uk

CALL US TODAY ON:
01235 280 072

MOBILE:
07537 149 128

LINES OPEN 7 DAYS A WEEK

*Offer valid for openings up to 2.6m wide & including 2 remote controls, 55mm white slats, internal manual override.

When your
computer
sotps mkanig
sense...

PC TECHNICIANS

WINDOWS | APPLE | ANDROID

Call: 01491 825449

Click: www.thepctechnicians.co.uk

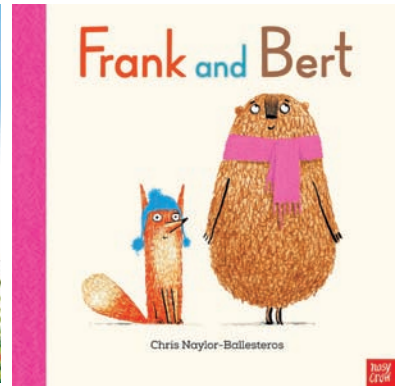
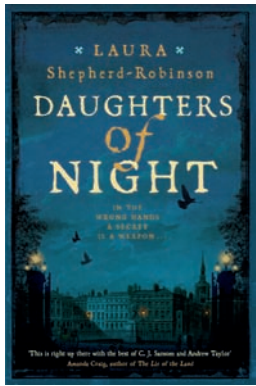
Visit: Unit B, The Croft, Whiteley Road, Wallingford, OX10 9RG

Spring has sprung at The Wallingford Bookshop!

The beginning of this year has been rather strange in the book world. As the start of last year saw bookshops closed due to lockdown, this year publishers have been more cautious about releasing titles post-Christmas. So now it is spring we have a tsunami of new books delayed from the beginning of the year!

I am so excited that **Daughters of Night** by **Laura Shepherd-Robinson** is now in paperback – I LOVED her debut *Blood and Sugar* and although the two books intersect, you can read either one first. Also, out in paperback are **Sixteen Horses** by **Greg Buchanan** and **Watch Her Fall** by **Erin Kelly**, if you fancy a good murder! New hardbacks include **Mother's Boy** by the fantastic **Patrick Gale**, **Good Intentions** by debut **Kasim Ali** and **The Slowworm's Song** by **Andrew Miller**, who is one of my favourite literary novelists. Most exciting of all is **Edgware Road** by **Yasmin Cordery Khan**, a debut novel from one of our Wallingford residents!

In picture books, **Hello Spring** by **Jo Lindley** is helping us get in the mood and we've all loved **Frank and Bert** by **Chris Naylor-Ballesteros**, a gentle tale of friendship and hide and seek. **Grimwood** by **Nadia Shireen** is a hilarious middle grade tale of two urban fox cubs escaping into the peaceful forest, which is full of crazy characters, including dramatic ducks and riotous rabbits. There's also **The Last Firefox** by **Lee Newbury** about a boy who is finding life tough, and the fox cub he finds who has a flammable secret. **The Revelry** by **Katherine Webber** is a story of secrets and superstitions as two teen girls find the truth behind their town's strict conventions and a curse that binds them together...



This is only a tiny fraction of the new books coming this spring so come in and we can make suggestions! Books won't damage your teeth like Easter eggs...



Meadows Morning Market gets off to a great start 2022 kicks off with a bang

'Meadows Morning Market', the new business venture created by two keen market lovers, held its first event of the year last Saturday and what a great success it turned out to be. Shoppers flocked in once again to be greeted by a record number of stallholders offering a wide selection of food, craft and general merchandise products.

Sited at The Great Hall, in Cholsey Meadows, Cholsey, now a thriving residential area, the indoor market opened its doors at 9.00am with a queue of keen shoppers already waiting for the 'off'. The event was blessed with bright sunshine but with a keen chilly wind, ideal for walkers and passers-by to pop in. And they certainly did that in numbers with almost 200 shoppers visiting throughout the morning.

Maintaining the event's tradition of offering a collection for a local 'good cause' instead of requiring an entrance fee, The 'Charity of the Month' was the Oxfordshire Wildlife Rescue, the Blewbury-based organization that offers an animal hospital for injured wildlife. It proved to be very popular and collected £56 for what is a very worthy cause!

Janine Wolfe, a co-founder of the initiative together with Becky Kite, was delighted by the success of the day: "What a great market we had last Saturday! It bodes very well for the coming year – once again we had an excellent turnout of stallholders which offer our shoppers such a great variety of products. This year we are planning to run a Market every last Saturday of the month until end November and we are already looking forward to our next Market on **Saturday 30th April**. Hope to see our regulars then."

REACHING FOR THE STARS!

Childcare Choices
WE NOW OFFER TAX-FREE CHILD CARE!

Stagecoach Wallingford
Singing, dancing and acting classes for 4 - 18 year-olds

stagecoach.co.uk/wallingford
01235 390 810
Wallingford School, OX10 8HH

STAGE COACH
Creative Courage For Life!

TRAFALGAR ENTERTAINMENT | COMPANY

Stagecoach Performing Arts is the trading name of Stagecoach Theatre Arts Limited. Stagecoach Theatre Arts schools are operated under franchise and are independently owned by their Principals. Stagecoach and Creative Courage For Life are registered trademarks of Stagecoach Theatre Arts Limited.

Slimming World
taste the freedom

eat out and lose weight

new for 2022 super-charged member pack!

JOIN US TODAY

WALLINGFORD & CHOLSEY

Monday evenings with Claire
6pm
Centre 70, Kinecroft Wallingford
07900988199

Wednesday mornings with Bev
9am & 10:30am
Centre 70, Kinecroft Wallingford
07895059079

Wednesday evenings with Nicola
4pm, 5:30pm & 7pm
Centre 70, Kinecroft Wallingford
07861672320

Saturday Mornings With Louise
9am
Cholsey Pavilion Cholsey
07368650463

#SWtastethefreedom
slimmingworld.co.uk

Slimming WORLD
touching hearts, changing lives

*At participating groups only. See our website for more information.

A.G. CURTAIN DESIGN LTD

www.agcurtaindesign.com

BEAUTIFUL CURTAINS, BLINDS & SOFT FURNISHINGS
01491 834238

Bespoke Curtains & Soft Furnishing
To enhance every room in your home

- 15 years serving clients in Oxon & Berks
- 1,000's of design lead fabrics
- Curtains & Soft Furnishings
- Poles – tracks – finials & tie backs
- Cushions - lamp shades & headboards
- Re-upholstery for chairs & sofas
- Expert making & fitting service
- Made to order promptly & efficiently
- Free measure & quotation

FABRIC & PROPS SALE
Tue 19th - Sat 23rd April

INSTORE ONLY
3 ST, PETERS PLACE,
WALLINGFORD
OX10 0BG

Blinds & Shutters
Modern & Contemporary

- Wooden & Venetian
- Roller & Vertical
- Perfect fit & Faux Wood
- Made to fit your windows
- Inside & Outside recess fit
- Manual & Remote controls
- For all rooms in your home or business
- Free measure & quotation



WHAT'S ON

AT THE CORN EXCHANGE, WALLINGFORD



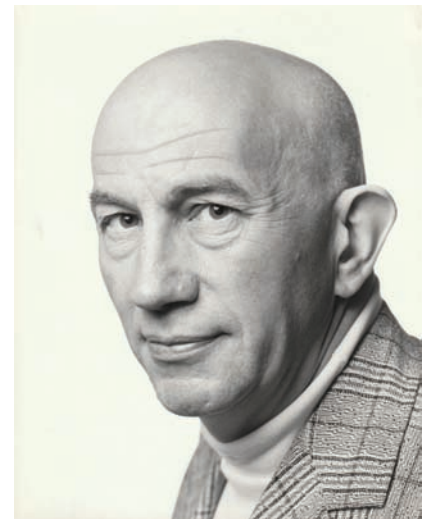
CINEMA

All regular performances normally start at 7:30pm unless stated otherwise.
Tickets £8 for Adults and £5 for under 15s unless otherwise stated.

All events now have full seating. This is in line with the practices and guidelines elsewhere. We are still asking patrons to sanitise their hands, and also wear a face covering when inside the building. We'll continue to fog all public areas after each performance. We have recently installed new air filters as a safety precaution. We're grateful for patrons for their observation of all the Covid rules that we have implemented in the theatre. Please look out for new updates for the programme on the website www.cornexchange.org.uk.

Sunday, 3rd April	Cyrano (12A)
Monday, 4th April	Cyrano (12A)
Tuesday, 5th April	Cyrano (12A)
Wednesday, 6th April	Cyrano (12A)
Thursday, 7th April	Cyrano (12A)
Friday, 8th April	The Phantom of the Open (PG)
Saturday, 9th April	The Phantom of the Open (PG)
Sunday, 10th April	The Phantom of the Open (PG)
Monday, 11th April	The Phantom of the Open (PG)
Tuesday, 12th April	The Phantom of the Open (PG)

Charles West, actor, singer and author, died at home in Wallingford in January, aged 94. He was born in Nottingham and after National Service trained at the RADA, then won a scholarship to study singing at Dartington Music College. Charles joined The Old Vic in London as a singer and actor, playing many Shakespearean roles, and toured with the Vic Company in Canada, the USA and Europe. His beautiful baritone voice was much sought after and he began working in musical theatre in the West End, taking part in Robert and Elizabeth, Strike A Light, Annie, Man of La Mancha, and many other dramas and musicals. He also appeared in repertory theatres all over the country. He played Don Quixote in Man Of La Mancha in Australia, New Zealand and on Broadway, and it was during those years that he began writing crime novels, all eight of which were published. Charles was married twice and leaves three sons by his first wife, Tona De Brett, the pianist and singing teacher. When he retired and married Julia, he settled with her in Wallingford, writing three of his novels here. He joined Benson Choir and Thameside-Wallingford U3A, running the Lower 6th Latin Class interest group for U3A.



Friends can contact Julia for information about his memorial when we'll hear his mellifluous singing voice.

Wallingford and District Stroke Club

The club has been assisting Stroke sufferers and their friends, families and carers for over 20 years. Affiliated to the Stroke Association, we are a friendly and happy club; we meet on the second Wednesday of each month at Crowmarsh Village Hall for activities and companionship, tea and cake. In the summer months we meet more frequently and arrange outings, both locally and further afield. Activities can include garden teas, pub lunches, river, canal and rail trips.

A stroke can have a devastating effect on the victim and also on those who are suddenly in a position of caring. It can be a lonely place but meeting with people in a similar situation can demonstrate that there is Life After Stroke .

We'd love to welcome more members (fees are very reasonable at £2 per month) and volunteers to help with transport. If you or someone you know, would like to join us – or just give us a try – please contact

Norman Goodall on 01235 834503 or Nigel Hessey on 07722 957102
and we'll be pleased to talk to you .
Norman Goodall & Nigel Hessey

Homebase Property are getting closer to the Twin Town Challenge charity car rally and we are stepping up our fund raising. If you haven't been to our office yet, please pop by and collect a free water bottle.

We are leaving on the 29th April from Blenheim Palace along with 120 other cars heading over to France and completing activities along the way to raise awareness for the charity SpecialEffect.org.uk who modify computer games for severely disabled children and young adults to allow them to join in with their friends.

We are very excited to be joining the rally, hopefully you have seen our car around town, TwinTown informed us that this years theme is Rock stars, we therefore had to get creative with our outfits...

If you would like to donate to this great charity, please pop into the office or head to our just giving page justgiving.com/homebaserally



The biennial Dorchester-on-Thames Festival is one of Oxfordshire's leading Festivals based in and around the stunning location of Dorchester Abbey. The Dorchester Festival takes place this Spring, 29th April – 8th May. The Festival is an amazing collection of over 50 events packed into just 10 days at Dorchester Abbey, raising money for Dorchester Abbey and for Daybreak, an inspirational local charity.

Emerging from a tough couple of years, Dorchester Festival is an opportunity to get together with friends and family to enjoy an eclectic mix of great entertainment. This year's mix ranges from The King's Singers to folk band Merry Hell, from our Bash party in the huge marquee to The Comedy Night, from the Duck Race to Lego Masterbuilders, inflatable walk-through brains and so much more!

<https://dorchesterfestival.com>

Since 2005 the Festival has regularly attracted over 3,000 people each year, from serious followers of the arts to schools, families and children of all ages and has raised significant profile and £200,000 for Dorchester Abbey and local charities. Dorchester Festival was started in 2005 following a major restoration of Dorchester Abbey.

It was initially a way of encouraging new people into the building and showing the potential of the Abbey as a venue for booking a variety of events.

Over the years it has become a major community event, offering opportunities to members of the community to perform and create and also to experience big professional arts events that would not normally be available on their doorstep in rural South Oxfordshire. It is entirely run by volunteers who take roles organising events, taking tickets or simply pouring tea!

We now also raise money across the Festival as a whole, and share our profits equally between Dorchester Abbey and a different local charity every time.

In 2022 we will be partnering with Daybreak, a local charity that supports people with dementia. Daybreak is unique in providing social and therapeutic respite days for people living with dementia, helping couples stay together at home, thus delaying or avoiding residential care. To learn more, please visit their website daybreak-oxford.org.uk



NEW STATE-OF-THE-ART PRE-PREP BUILDING TO OPEN SEPTEMBER 2022

Moulsford Prep School is delighted to announce the opening of our new state-of-the-art Pre-Prep in September 2022.

The new Pre-Prep will be home to a Pre-School, Reception, Year 1 and Year 2. The Pre-School is a new venture for the school, and will be for boys and girls who have turned 3 years old. There are no plans for any other year groups in the school to be co-educational, and from Reception onwards (as now) Moulsford will focus on delivering an outstanding education for boys.

The building has been designed to incorporate eco-friendly systems such as solar panels and air source heat pumps, and the U-shaped layout allows for separate outdoor playing areas for the children, accessed direct from classrooms, with a central courtyard play area and soft all-weather flooring.

For a virtual tour of the new building, please visit our website www.moulsford.com/school-life/pre-prep-ages-4-7-

Next Open Day: Friday 20th May 2022

Moulsford is a thriving independent Prep School of 370 boys aged 4 - 13 years, set in picturesque grounds on the banks of the River Thames in South Oxfordshire. We aim for our boys to receive the broadest possible education, while remembering that they will learn best when happy and settled. Our down-to-earth, family-focussed approach embraces the fact that boys of this age should be having fun at the same time as learning. www.moulsford.com admissions@moulsford.com



1st Wallingford Boys' Brigade

The BB members have been very busy during February and March. They have been learning about life in Ukraine and have been saying a prayer for the people of Ukraine.

Older members took part in a form of curling. As we do not have any ice sheets in Wallingford they used curling stones made of ice and a flat part of the Cattle Market car park. Junior members took part in the International Team Games and should find out their world ranking in mid April so look out next month for the result. The juniors also took part in the Oxfordshire ten pin bowling competition and finished in 3rd place. All members have been cooking this month and this has included; Monster Cakes, Earth Biscuits and pancakes all as part of their awards. They have also tried pancake racing. They will now be conducting some science experiments.

We have started to run kayaking sessions again from Cholsey Marsh. During the Easter break several members from Wallingford will be joining with others from around the UK to paddle in the Severn Challenge, a 140 mile kayak from Welshpool in North Wales to Sharpness Docks.

We plan to run a Bronze DofE expedition just after Easter and plans are at an advanced stage. If you would like to become involved in the activities that we offer please contact us at WallingfordBB@gmail.com



About Wildcats

Wallingford Wildcats were formed during the 1993-94 season and has gained strength in numbers and experience every year. Our training sessions are held on a Sunday mornings for younger children (from aged 5 to under 12's) and Weekday evenings for older children (Under 14's and Under 16's) throughout the season on the astroturf at Wallingford Sports Park.

Each coaching group is led by a qualified Hockey Association (HA) Coach, with the assistance of hockey players from the senior section of Wallingford Hockey Club. All qualified coaches have undertaken training and been assessed on their ability to teach children. We also hold regular refresher sessions in-house for all coaches and assistants. Many of the coaches have also gained umpire qualifications and first-aid certificates. In addition to coaches and club players we also welcome help from parents who take an interest and actively support the Wildcats Committee.

Each coaching session consists of a warm-up, coaching of both individual and team skills which is followed by a practice game and finishes with a warm-down. Progressive exercises are used to build up basic skills which are then used in a match situation. The rules of the game are also introduced which we encourage all children to learn from an early age. We endeavour to provide a safe, enjoyable, fair, structured, challenging, rewarding and positive experience for all individuals.

Wallingford Wildcats are very involved in the junior hockey community and have had many team successes over the years. The club runs its own Hockey Tournament for U8's, U10's and U12's each year which attracts many teams from across the area. We also have regular fixtures against local clubs for all age groups and run eleven-a-side teams for the Under 14 and Under 16 age groups. Older children (13+) also have the opportunity to play in the senior sides on a Saturday when their coach feels they are ready. wildcatsmembership@wallingfordhc.org.uk



WALLINGFORD TEA & COFFEE



We roast
High Grown Coffees
and we stock Quality Teas
together with a range of
Herbal beverages and Spices
plus a wide variety of
Tea and Coffee accessories

Wallingford Tea & Coffee
Company Limited
6a St. Martin's Street
Wallingford, Oxon. OX10 0AL
Telephone: 01491 836263
kitchtea@gmail.com

Manor Café at Howbery

Open: 9am-4pm, Mon-Fri

MANOR CAFÉ
at
Howbery



- ✓ Hot and cold drinks, homemade cakes: all day
- ✓ Breakfast: 9.00am -10.30am
- ✓ Paninis, baguettes and baps: 11.00am - 2.00pm
- ✓ Hot and cold lunch options: 11.30am - 1.30pm

Order online or at service counter | Outside and indoor seating areas
Takeaway service | Beautiful grounds | Ample parking

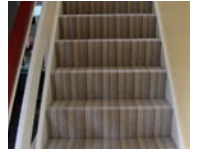
www.howberypark.com

Masterfloors

Contract and Domestic Flooring Specialists



20 St. Martin's Street
Wallingford
Oxon. OX10 0AL
Tel: 01491 833701
Free estimates



www.masterfloorswallingford.co.uk

HOMEBASE PROPERTY

★ WHATEVER YOUR PROPERTY NEEDS ★

SALES

**LETTINGS &
MANAGEMENT**

01491 824470 | info@hb-pm.co.uk
16B St Mary's St, Wallingford, OX10 0EW

Fireplace Magic

Stoves & Fireplace Sales

- Solid fuel, gas or electric fires
- Installation
- Chimney sweeping
- Woodburner servicing
- Chimney lining
- HETAS registered



Visit our showroom at
45 Prospect Street
Caversham RG4 8JB
Tel: 0118 9463060

www.fireplacemagic.co.uk

Wallingford

— TILES & BATHROOMS

Tile & Bathroom Showroom

Call Now 01491 377 272
showroom@wallingfordtilesandbathrooms.co.uk

WALLINGFORD RADIO

For the community of Wallingford Oxfordshire

Turn on, tune in
Listen online at
<https://wallingfordradio.co.uk>



Local artists to run a major art exhibition at The Great Hall Cholsey

Wallingford and District Art Club (WADAC) club members are exhibiting as part of **Oxfordshire Art Weeks from 13-15 May (10.00am-5.00pm, except Friday 13th, 1.00pm-5.00pm) at venue 243** - the fabulous, light, and airy The Great Hall at Cholsey Meadows. View over 60 works using all painting media plus textiles and jewellery, created by over 25 WADAC club members - from commercial artists to skilled amateurs.

Ranging from abstract to realist, the artwork on display reflects the style and preference of each individual artist. Similarly, the choice of media used varies and includes acrylics, ink, oils, watercolour, mixed media. So, whether you like still life or landscape, animals or florals, there should be plenty here to delight any visitor.

In addition, we will exhibit exquisite crafts in the form of textile gifts, painted silk and jewellery in silver and other metals. We are also holding free art workshops on Saturday 14th and Sunday 15th from 10-11.30am, run by **Cholsey artist Jo Wilson of "Art for All"**. They cover learning from the Masters: an oil paint on canvas workshop looking at reproducing small sections of paintings by Monet. These workshop are aimed at people of any level of ability, complete beginners welcome. The workshops are free but there are only 6 places available in each workshop, book early to avoid disappointment. To book email: info@jo-wilson.co.uk

Highlights from just a few of our WADAC's artists that include:

Carole Kettle uses acrylics and watercolours, painting evocative landscapes and street scenes. Many of her paintings capture people at play or rest and are delightfully sunny in nature.

Geoff Johnson's flowers, landscapes and the changing seasons are all portrayed in vivid colour and great depth.

Gavin Peacock works in oils, acrylics and virtual reality and typically demonstrates strong compositions, depth, tonal contrasts and plays with light. Think atmospheric.

Janet Roberts produces beautiful crafts - alcohol-inked jewellery and artworks, mini messenger bags made from upcycled fabrics, and hand painted silk scarves are just a few of the colourful works on show.

Rebekah Robinson recreates dogs in oils, coloured pencils, pastels and charcoal, together with detailed miniature dogs and sheep in 3D needle-felting and larger dogs in amigurumi crochet.

Pam Sandhu-Dickens enjoys creating loose, atmospheric paintings in watercolour and bold, expressive paintings in vibrant acrylics. With both, the aim is to capture the essence of the subject while leaving areas undefined in order to engage the viewer's emotions and imagination.

Doreen Smith works in oil and has recently been experimenting with wax/oil to obtain texture. She paints landscapes, animals and still life.

Mark Wood is a well-known Wallingford artist, painting delightful, gentle watercolours of landmark local scenes. Recently he has focused on atmospheric acrylic landscapes – full of colour and bravado.

The exhibition is made possible by the generous support of several organisations: the Cholsey Community Development Trust (owners of The Great Hall); Champions of Wallingford, trading since 1869, for all your hardware and houseware needs; Art for All – Jo Wilson who runs weekly classes in Cholsey; 34sp.com who provide WADAC's website platform free of charge; and Care Dry Cleaners, Wallingford.

We are exhibiting in The Great Hall in Cholsey's Fairmile development (venue 243). The venue is well ventilated and Covid secure, with ample parking and disabled access. Complementing the artworks, we will offer a range of hot drinks and homemade cakes, provided by The Treehouse School. So come along for a relaxed morning or afternoon out – and bring your friends and family! See the Art Weeks site for more information: www.artweeks.org/v/wallingford-district-art-club



WALLINGFORD & DISTRICT ART CLUB

Exhibiting as part of Oxfordshire Art Weeks

13-15 May 2022

10.00am – 5.00pm (1.00pm on 13 May)

Venue 243 – The Great Hall at Cholsey Meadows

View over 60 works from 25 different artists – paintings, craft, textiles and jewellery

Free art workshops from Art for All



The Great Hall, Fair Mile, Cholsey OX10 9GW

www.wallingfordartclub.org.uk





Wallingford Town Council are excited to announce two new roles within Local Government, based in Wallingford full and part time with flexible hours. For more information or to apply please contact senioradmin@wallingfordtowncouncil.gov.uk or telephone: **01491 835373**

Community, Business & Tourism Development Officer

Salary: SCP26 (currently £30,451), 37 hours per week flexible initial one-year contract.

Wallingford Town Council are looking to recruit someone to be responsible for the development and promotion of community and tourism events to create an improved experience for residents and visitors alike, whilst increasing revenue generation.

The post holder will liaise with businesses, attractions, community groups and other stakeholders to forward the sustainable development of the Town, and to create, arrange, manage and promote events throughout the Town.

Relevant experience in this field is essential for this important role which is a combination of marketing, public relations and project management. The role also demands considerable planning and preparation as well as the ability to work with other groups of people and staff already in place. Knowledge of working within a legally recognised historic environment will be highly beneficial.

Minutes Officer

Salary: SCP (£25,481 pro-rata), 25 hours per week flexible

Wallingford Town Council are looking to recruit a meetings officer to compile the agendas and minutes for all Council and Committee meetings acting as centre of competence and lead administrator for the management of meetings, ensuring effective agenda formation, complete meeting organisation and effective minute taking.

The ideal candidate will be required to attend all meetings of the Council and its standing Committees, being directly responsible for producing the agendas and minutes for those meetings and ensuring appropriate cover is met for all meetings required by the Council.

The role requires excellent working relationships to be maintained with other members of staff, elected Members, other Councils, local organisations, groups and community members.

Hours will be flexible but must include all Council and Committee meetings (Monday and some Wednesday evenings from 7pm)



LEARN, GROW, FLOURISH

Mary Mountstephen MA (SEN) MA (RES)

- **Specialist in Learning Differences in Children Y1-Y8**
 - Former Primary SENCO
 - Free initial consultation
- **Different levels of assessment to suit individual needs**
 - Individual coaching/ tutoring available
- **Multi-sensory approaches that stimulate learning progress**
 - Personalised support packs
 - Expert at 'solving the learning puzzle'
 - Building confidence through success



e: kcsmary1@gmail.com
 m: 07813899348
www.marymountstephen.com



Live well,
your way
 with Care at Home

Your home is where you feel the most comfortable and the happiest. It is the place you know the best. If you want to stay living comfortably at home, Home Instead can help make that possible.

Home Care is Safe Care

- Home Help • Companionship
- Personal Care • Dementia Care
- Live-In Care

Maidenhead, Henley & Wallingford
 01865 364 418

www.homeinstead.co.uk/wallingford

"Want to join our amazing team?
 Get in touch - we are recruiting now!"



Winterbrook Garden Services Ltd

Garden Design, Construction & Maintenance
 Fencing
 Patios
 Full Pruning Service
 Tel: 01491 838189
 Mobile: 0775 36 36 333
winterbrookgs@gmail.com



Winterbrook Garden Nurseries

High Road, Brightwell-cum-Sotwell,
 OX10 0PS

Independent plant nursery
 specialising in herbaceous
 perennials
 & garden curios

www.winterbrookgardennurseries.com

[f @winterbrookgardennurseries](https://www.facebook.com/winterbrookgardennurseries) [i](https://www.instagram.com/winterbrookgardennurseries)

North Moreton Village Fete & Games Fun Day

Sunday 8th May

1- 4.30pm

North Moreton Recreation Ground

- ★ Putting Competition
- ★ Egg & Spoon Race
- ★ 3-Legged Race
- ★ Basketball
- ★ Penalty Shoot-Out and More

Sign up on the day to enter the team games or email sarah_toolan@hotmail.com to register as an individual or family.

Plus:

- ★ Afternoon Tea
- ★ Bric-a-Brac Stall
- ★ Children's Games
- ★ BBQ
- ★ Book Stall
- ★ Toddler Activities
- ★ Pimm's Tent
- ★ Face Painting
- ★ Raffle
- ★ Donkey Petting Corner

Lots to do for all the family and be entertained by the fabulous Dukes Ukelele Band!

Entrance £1 adults, children free.



Crowmarsh Jazz are putting on a very special concert at the Wallingford Corn Exchange on 9th April in aid of DEC Emergency Appeal for Ukraine.

We have an incredible All-Star lineup of UK Jazz musicians including **saxophone legend Art Themen**, **drumming royalty Clark Tracey** and 16 times winner of **Best UK Jazz Piano Player Dave Newton**, as well as **Ukrainian jazz harpist Alina Bzhezhinska**, fabulous **trumpet player Ben Cummings**, and London **singer Vimala Rowe**. **Maff Potts** will be playing some fantastic blusey piano and debuting one of his incredibly moving compositions, and **Fluer Stevenson** will be singing.

The **wonderful Corn Exchange** has moved their Saturday night film for this and given us the theatre for **FREE** including staff, technicians, lights etc. All ticket revenue will go straight to DEC (Disasters Emergency Committee) which is the portal for the Ukraine Humanitarian Appeal and represents 15 leading charities who are all involved in supplying goods and services to those affected.

We also hope to be live-streaming the concert to some jazz fans we know in Kyiv. We can't do much but we can show some solidarity and raise some funds for refugees.

Please come along, listen to some great music and lend your support. It's set to be a truly unforgettable evening.
www.cornexchange.org.uk/whats-on/jazz-for-ukraine/

Home Library Service

Would you like to borrow library books but are unable to visit the library for any reason? If you're finding it difficult to get to a library, the Home Library Service may be able to help.

The Home Library Service is run by Oxfordshire County Council and serves 800 customers across the county. With the help of volunteers it looks after and delivers books and audio visual items to those who struggle to physically visit a library due to their personal circumstances. The service is completely free of charge to customers, many of whom are elderly or housebound, and it can also be used on a short-term basis following illness or hospitalisation. Those with carer responsibilities are also welcome to apply.

How it works

Contact us to discuss the kind of Books, Large Print/Regular Print, DVDs, Audio Books on CD, Music CD or DVD's, that you like to read or enjoy. We can then arrange for a library volunteer to deliver these to you in your home. Our volunteers are DBS checked, wear identification badges and provide a helpful and friendly service. Whenever possible, we try and arrange for the same volunteer to visit you each time. Your library materials will be delivered and collected every 3 weeks. The Home Library Service is free of charge, and there is no charge for requests or late returns.

How to register

To register for this service or for further information call your local library or telephone the Home Library Service on **01865 810259** or email homelibraryservice@oxfordshire.gov.uk.

Paddocks Pre-School

Paddocks Pre-school
Paddock Road
Wallingford
OX10 9LT
www.paddockspreschool.com

A friendly preschool environment offering a wide range:

- Flexible sessions for 2 – 5 year olds
- Universal 15 hours funding for 2, 3 & 4 year olds
- Extended 30 hours funding for 3 & 4 year olds
- Large Garden & Forest School
- After school care available
- Holiday play schemes for 2-8 year olds



For more information or to arrange a visit, please call **01491 825333** Charity Number: 1001964
or email info@paddockspreschool.com



Skip Hire Caged Tipper Waste Management

☎ **01235 760555**

✉ info@asvogel.co.uk

🌐 www.asvogel.co.uk

[Mention Window on Wallingford when you call]

JIM PINK (WALLINGFORD) LTD

The Friendly Family Firm
Serving the Motorist since 1960

NEW & USED CAR SALES • SERVICING ALL MAKES
MOT CENTRE • AIR CONDITIONING SPECIALISTS
TYRES • BATTERIES • EXHAUSTS
CAR SALES • SERVICE CENTRE

Wood Street Garage, Wood Street, Wallingford

01491 836017

01491 836022

07342 630396

www.jimpink.co.uk

info@jimpink.co.uk



Fitzcount Land

Land Acquisition > Planning > Development Specialists

- Local knowledge, Oxon, Berks, Hants, Bucks, Beds, Wilts
- County Council specialists
- Planning consent, Promotion, Professional Services

We specialize in finding the best solution for your land to maximise its potential

All initial conversations free, without obligation, in complete confidence and with the upmost sensitivity.

Talk with Adam Goddard 07493 170307

adam@fitzcountland.co.uk

Over 20 years working for our customer partners

WEPS

WALLINGFORD ELECTRICAL & PLUMBING SUPPLIES

OPEN TO THE
TRADE & PUBLIC

☎ **01491 827825**

✉ SALES@WEPS.ORG.UK

UNIT I MOSES WINTER WAY



Wallingford Tyres & Exhausts



FRIENDLY, PROFESSIONAL SERVICE
AT COMPETITIVE RATES

PHONE: (01491) 824145 FOR A QUOTE

or call in at: AYRES YARD, STATION ROAD,
WALLINGFORD, OXON.

OR BY APPOINTMENT OUTSIDE WORKING HOURS

Mon.-Fri. 8.30 a.m.-5.30 p.m. Sat. 8.30 a.m.-1.00 p.m.

(Just past the Esso Garage on the way to Didcot)



Crosby Engineering

Latest Diagnostic Software

All Makes & Models Serviced & Repaired

Laser 4 Wheel Alignment

MOT

Air Conditioning servicing

Free Local collection

Audi BMW Mercedes VW Specialist

Family Run Business In Wallingford Since 1980

01491 834544

Unit F The Croft

Whiteley Road

Hithercroft Ind Est

Wallingford

Ox109rg

customer care without compromise

**CHEQUERS
GARAGE**



Fullers Road, Aston Tirrold,
Oxfordshire OX11 9EN

info@chequers-garagedidcot.co.uk
www.chequers-garagedidcot.co.uk

At Chequers Garage we look after our customers as well as their cars. That's why we have courtesy cars, offer local collection and delivery, explain your invoice in plain English and every car is washed before it is returned - not only will your car run well, it will look great too!

MOT

SERVICE

TYRES

AIR CON



the Good Garage Scheme

Call today on 01235 850347

Crowmarsh Jazz and Corn Exchange present

ART THEMEN CLARK TRACEY
DAVE NEWTON ALINA BZHEZHINSKA
VIMALA ROWE FLEUR STEVENSON BEN CUMMINGS

JAZZ FOR UKRAINE

An All Star line up of UK jazz musicians in aid of DEC appeal

Saturday 9th April • 7.30PM • Corn Exchange, Wallingford

£15 per ticket

Tickets from Corn Exchange Box Office
www.cornexchange.org.uk



Box office 0333 666 3366 www.dorchesterfestival.com

Daniel Hoadley Garden Services



- Hedge Cutting + Reductions
 - Fencing + Repairs
 - Clearance + Tidy up
 - Lawn Mowing + Weeds
- 07498235485**

Vacuum cleaners - repairs bags & accessories
Power washers Steam cleaners Carpet cleaners
Scrubber driers Window cleaning poles Sanders



CLEAN MACHINE

1 & 2 St. Peters Place, Wallingford OX10 0BG
01491 825600 Hire & Sales
www.machinesthatclean.com
e-mail: info@machinesthatclean.com



@cleanmachineltd



Find us on Facebook

/CleanMachineLtd

C. A. HOLTOM Building Contractor

Established 1988

FOR ALL TYPES OF

Building - Extensions - Plastering - Refurbishment

Alterations - Brickwork - Patios - Drainage

Tel: 01491 651141 / 07990912966

Email: choltom1@sky.com

Tom Cottrell Landscapes

EST 1974 Family Run Business



Telephone: 01491 836974

All tree aspects - Dave Cottrell

- Felling • Reducing • Reshaping
- Thinning, Removal • Pollarding
- Shrub & Tree Pruning • Dead Wood
- Removal Hedge Management
- Stump Grinding

Garden & Landscaping Services

- Turfing • Hedge & Grass Cutting
- Planting • Fencing • Patios
- General Garden Maintenance
- Garden Renovation & Construction
- Woodchip Mulch
- Seasoned Logs & Kindling Wood

www.tomcottrelllandscapes.com

Email: tomcottrelllandscapes@gmail.com

Orchard Cottage, High Road, Brightwell-cum-Sotwell, Nr Wallingford, Oxon OX10 0PS



INSPIRATION CREATION TUITION

1 Ayres Yard, Station Road, Wallingford, Oxon OX10 0JZ
T: 01491 838005 E: keri@wallingfordflowers.co.uk

www.wallingfordflowers.co.uk



TUNELESS CHOIR

singing like no one is listening

Tuneless Choirs are for those who have always been told they can't sing in tune but LOVE to do it anyway!



WALLINGFORD TUNELESS CHOIR

Singing in person
every Thursday evening

St Mary-le-More Church, Market Place, Wallingford, OX10 0EG
Registration starts from 7.45pm. Singing starts at 8pm.



Price: £10 the first time you attend for all new members

(Includes registration, song book and singing session)

£7 pay as you go

or £5 per session when booking an 8 week block

Contact us:

Tracy Noble on 07843 144737
wallingford@tunelesschoir.com
www.tunelesschoir.com/wallingford

LOVE HAIR? LOVE FASHION? BE A HAIRDRESSER

Apprenticeships available now!



Call Forresters: 01491 837 523

Drop in: 25 High Street, Wallingford

Forresters4hair.com



Apprenticeships

HOWARD CHADWICK FUNERAL SERVICE

A caring family owned and managed Funeral Service

- Dedicated Private Chapel of Rest •
- Golden Charter Pre-Paid Funeral Plans •
- Specialists in Memorial Stones and Designs •

33 Benson Lane, Crowmarsh Gifford,
Wallingford OX10 8ED

Tel: 01491 825222

www.chadwicksfuneralservice.co.uk



Golden Charter
Funeral Plans

Wallingford Wine of the Month

This month, I'm putting the spotlight on a classic bottle which is the perfect wine for uncertainty. Writing three weeks before publication, this issue could arrive in blazing sunshine, driving rain, horizontal hail, or a mix of all three. We might be having barbecues, gazing at a chilly sun while delighting in the fresh produce of Spring, or possibly still huddling round a radiator and wishing for May. How to capture the mood in a single wine?

The answer, I put it to you, is the Domaine Sève Macon-Solutre. It is by no means a capricious wine – the opposite in fact. Orchard fruit, a silky medium body, dry and persistent on the finish, it's a refreshing and clean expression of the noble Chardonnay grape. It is a delicious example of southern Burgundy, and an excellent solution to a dilemma that we see people face daily: "I'm going to a friend's for dinner, and I want to take some wine, but I don't know what we're having..."

The wines of Macon are the perfect partner to food of almost any kind. Rich enough to stand up to bold flavours, elegant enough to enhance a delicate dish. Fresh enough to cut through something fatty, but rounded such that it doesn't clash with spice. It's that friend you can invite to any occasion because they just get on with everyone, and everyone enjoys themselves slightly more for their presence.

The more experienced among you will recognise Macon as one of the "côtes" of Burgundy. The very knowledgeable will be able to tell you that the Roche de Solutre, after which the village, and thus the wine, is named, is the dominant feature of Pouilly-Fuissé. Jean-Pierre Sève, the fourth generation winemaker, primarily produces Pouilly-Fuissé, and his single hectare on the same soil, just outside the appellation produces this wine. Aged in concrete rather than oak to preserve the fruit character, it's a classic expression of the terroir, and is welcome on my table for any occasion.

Have a very happy April, and I hope you enjoy the wine.

Michael Jelley is the Director of Grape Minds Wallingford



- Wine Name:** Domaine Sève Macon-Solutre
- Producer:** Jean-Pierre Sève
- Grapes:** Chardonnay
- Region:** Côte Maconnais, Burgundy
- Exclusive Price:** £13.49/bottle until the next issue.
- Mention WOW in store!**

Events coming up at The George Hotel

- April** – Every Wednesday will be Mexican night in the Tavern Bar – serving Soft Tacos, Burritos, Chips & Salsa among other things with Corona beer and Tequila shots with salt and lime! All year
- May** – Return of the Lobster at The George £10 – for half Scottish Lobster and Fries, amazing deal that worked so well last year it must return for the Summer! May-Sep
- June** – Queen's Jubilee Weekend we will be having an English Beer and Cider Festival with the best of British Food BBQ. Cakes, cheese, wine, Music for entertainment and English games/activities - Large outside TV showing Trooping of the Colour – The George will be dressed in Red, White & Blue

GRAPE MINDS

Hand-selected wines, spirits and beers



- Free delivery for 6 or more bottles
- Party services (sale or return, free glass hire & more)
- Friendly advice
- Tasting evenings
- 500+ different bottles
- Wine open to try

10 St Martin's Street, OX10 0AL 01491 824549
www.grapemindsdrinkalike.co.uk

THE GEORGE TAVERN BAR + KITCHEN

£10 Special



Moules-frites £10

High Street - Wallingford - Oxfordshire - OX10 0BS
e-mail: info@george-hotel-wallingford.com

Café Delorme

Fresh ground coffee and drinks

Doughnuts and pastries baked fresh daily

Takeaway menus with weekly specials Wed - Sat to order

Dining In from end June

Authentic French Bistro Evenings one Friday each month

Book on Facebook or 01491 651088

Café Delorme, 2 The Pound, Cholsey OX10 9NS



EST. 1995

Mr & Mrs Park's

FAMILY BUTCHERS

High welfare local produce

Knowledgeable and friendly service

A great range of local cheese, wines and much much more.

Catering available including hog roasts and barbecues as well as picnic spreads in the warmer weather.

Taking orders for Easter now

Check out our website or follow us on Facebook or Instagram to learn more.

5 The Pound, Cholsey, Wallingford, Oxfordshire, OX10 9NS
01491 651300 • info@mrandmrsparcs.co.uk • www.mrandmrsparcs.co.uk



Red Lion

Brightwell cum Sotwell

Corinne & Mouse Welcome you.

Pop in and Say Hello

The Street, Brightwell-cum-Sotwell, Oxfordshire OX10 0RT

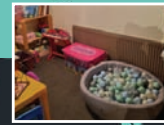
01491 837 373

www.redlionbrightwell.co.uk

FB: RedLionBrightwellcumSotwell

COFFEE CULTURE

Where children can play and you can relax



GOOD COFFEE | SOFT PLAY AREA | GREAT FOOD

OPEN TUESDAY TO FRIDAY 9.30AM - 3PM

Royal Standard · 32 St Marys St · Wallingford OX10 0ET

Avanti ITALIAN

RESTAURANT



Dining In
Takeaway
Delivery Service

Tuesday to Saturday

Order online
avantiitalian.com
or call 01491835500

GREAT FOOD, FINE LOCAL ALES AND A WARM WELCOME AWAIT AT THE ROYAL STANDARD PUB, ALONG WITH SKY AND BT SPORTS SO YOU CAN FOLLOW ALL THE LATEST SPORTS ACTION

**PROBABLY THE BEST
SUNDAY ROAST in town!**

CALL 01491 599105
ROYALSTANDARDWALLINGFORD.CO.UK



ROYAL
STANDARD

WALLINGFORD'S ROYAL: ANYTHING BUT STANDARD!

SUNDAY ROAST

SHILLINGFORD BRIDGE



2-Course Roast

Join us on the River Thames at Shillingford Bridge Hotel!



@shillingfordbridgehotel

Shillingford Bridge Hotel,
Wallingford, OX10 8LZ

E: reservations@shillingfordbridge.co.uk

T: 01865 858567

**£19.50
per person**



Shellfish Com
Restaurant & Bar

28 High Street
Wallingford

www.shellfishcom.co.uk

01491 832 807

wallingford@shellfishcom.co.uk



Domestic Maintenance

- Window Cleaning
- Conservatory Roof Cleaning
- Gutter Clean / Repair
- Patio / Driveway Clean
- Waste Removal
- Gardening
- Hedge Cutting
- Painting and Decorating
- Fencing
- and much more...

For a **FREE** quotation please call Sam on
07926 415 176

Also follow SB Domestic Maintenance on Facebook for an up to date portfolio of completed works and monthly special offers

ADP FLOORING

Adrian Pitson

Carpet, Vinyl, Wood, LVT Flooring expertly fitted

• Over 30 years experience • Supply & fit • Professional & reliable

adpflooring@hotmail.com • 07528 210 562

W

WATER'S EDGE

PLUMBING & HEATING

Plumbing and Heating Services

Based in Crowmarsh, fully qualified and insured.
Contact our friendly office team for a quick response
to your requirements or to arrange your **FREE QUOTE**

01491 821 626

www.watersedgeuk.co.uk | contactus@watersedgeuk.co.uk

- General Plumbing
- Leak Repair
- Central Heating
- Boiler Repairs
- Boiler Installations
- Shower Installations
- Powerflushing
- Gas Safety Services
- Underfloor Heating
- Estate Agent Services



Proud members of

Checkatrade.com
Where reputation matters



Shaun Guard

TV & WIFI SERVICES

- **Aerials** - supplied, repaired & poor reception solved
- **Satellite** - Sky Q dish upgrades, discreet dish installation also foreign TV
- **Internet** - blackspots cured, data cables to your TVs / computer
- **TVs** - hung on your wall or set up & tuned

OXFORD AERIALS

Call Wallingford
01491 833282
www.oxfordaerials.co.uk

G.R. Galliford

Graham
07762 650 809
01491 824583



Mini Digger
with Operator
Block Paving
Driveways
Patios
Drop Kerbs
Groundwork

g.galliford@btinternet.com

Have you a Lasting Power of Attorney for Finance and Health?



HELP-PEN-HAND

Learn about LPAs for just £35.
Then you can do it yourself – if
daunted, I'll help you. Val Wolsey

01491 836820 | HelpPenHand@gmail.com



Book your
**PERSONAL
TOUR**
Welcome!



Come and join us!

Discover what makes Cranford an extraordinary start to school life
Specialist teaching, excellent facilities and outstanding pastoral care.



CRANFORD HOUSE

Excellence in Independent Education
for Boys and Girls aged 3 - 18
www.cranfordhouse.net

HAVE TROUBLE WITH YOUR TREES?

NEED SOME HELP? ASK THE EXPERTS

- Tree removal
- Tree thinning
- Stump grinding
- Hedge trimming
- Tree pruning
- Tree felling
- Landscaping
- Fencing

We are city & guilds nptc qualified and insured
you can feel safe dealing with us.

Call now to see how we can help Free no obligation quote

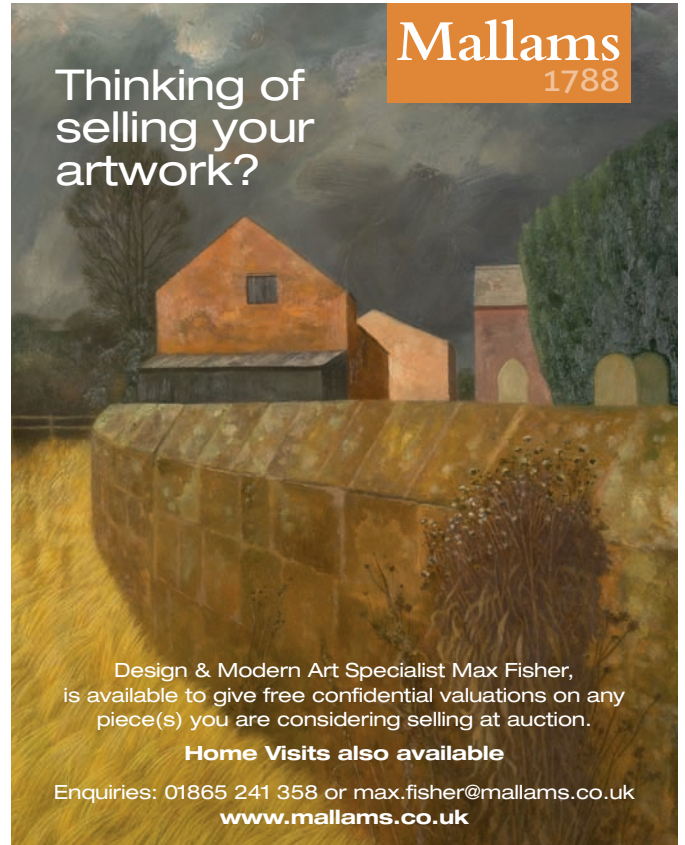
1st CLASS TREE SURGEONS

E. quote@firstclasstreesurgeons.co.uk

T. 07889 881 525
firstclasstreesurgeons.co.uk

Mallams 1788

Thinking of selling your artwork?



Design & Modern Art Specialist Max Fisher,
is available to give free confidential valuations on any
piece(s) you are considering selling at auction.

Home Visits also available

Enquiries: 01865 241 358 or max.fisher@mallams.co.uk
www.mallams.co.uk

SIMON THE STRINGER

Tennis and squash racket stringing across Oxfordshire and Berkshire.
Collection and delivery available.

info@simonthestringer.co.uk
www.simonthestringer.co.uk
Tel: 07711 948 550

WE NEED
YOU!

We are needing some new
volunteers, distributors, and deliverers,
so if you have a couple of hours
spare each month, please get
in contact with us.

WINDOW ON WALLINGFORD
WOW

info@windowonwallingford.co.uk

HAYNES

Car Care Centre

servicing...batteries...tyres...fantastic value

Bushells Business Park, Lester Way,
Wallingford Oxon OX10 9DD

www.haynes-car-care.co.uk

- All Makes Servicing and MOT's
- Parts & Accessories
- Air Con Re-Gas
- Courtesy Car
- Batteries & Tyres
- 4 Wheel Laser Tracking



Proud Sponsors of Wallingford Vehicle Rally & BunkFest

01491836097